

# PHILIPS

LCD monitor with  
USB-C

Business Monitor

3000 series

24 (23.8" / 60.47 cm diag.)

1920 x 1080 (Full HD)

24B2U3301



## Redefining workflow productivity

This monitor delivers business efficiency. Not only is it equipped with essential features, but it also has ones that stand out like its 120 Hz refresh rate, SoftBlue, Flicker-Free, VESA mount and more.

### Designed for the way you work

- Built-in stereo speakers for multimedia
- SmartErgoBase enables user-friendly ergonomic adjustments
- Eyesafe-certified blue light protection and colour accuracy
- Less eye fatigue with Flicker-Free technology
- EasyRead mode for a paper-like reading experience
- SoftBlue Technology: for comfortable viewing

### Single cable USB-C connection

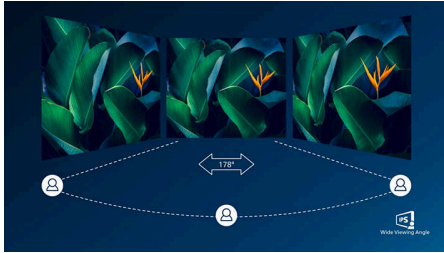
- RJ-45 to USB-C gives easy network connection with security
- USB 3.2 high-speed data transfer

### Superb Picture Quality

- 120 Hz refresh rates for ultra-smooth images
- 16:9 Full HD display for crisp, detailed images
- IPS LED wide view technology for image and colour accuracy

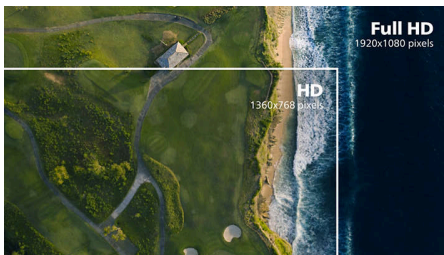
# Highlights

## IPS technology



IPS displays use an advanced technology that gives you extra-wide viewing angles of 178/178 degrees, making it possible to view the display from almost any angle. Unlike standard TN panels, IPS displays give you remarkably crisp images with vivid colours, making them ideal not only for Photos, movies and web browsing, but also for professional applications that demand colour accuracy and consistent brightness at all times.

## 16:9 Full HD display



Picture quality matters. Regular displays deliver quality, but you expect more. This display features enhanced Full HD 1920 x 1080 resolution. With Full HD for crisp detail paired with high brightness, incredible contrast and realistic colours, expect a true-to-life picture.

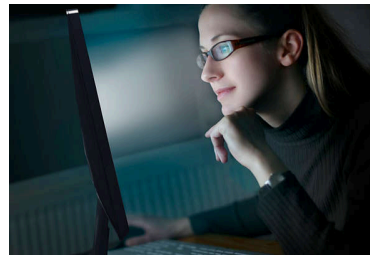
## 120 Hz fast refresh



For gaming and video performance, you demand display with lag free, ultra-smooth images. This Philips display redraws the screen image up to

120 times per second, much faster than a standard display. A lower frame rate can make enemies appear to jump from spot to spot on the screen, making them difficult targets to hit. With 120 Hz frame rate, you get those critical missing images on the screen which shows enemy movement in ultra-smooth motion so you can easily target them.

## SoftBlue Technology



SoftBlue LED technology, combined with the monitor's low blue light panel, is an effective solution for reducing the adverse health effects caused by high exposure to blue light. In this monitor's panel, the ratio of light is reduced by nearly 50 percent, while the SoftBlue LED technology works simultaneously by reducing harmful blue light rays emitted from the screen. Furthermore, the SoftBlue LED technology is tested and certified by TUV Rheinland Eyesafe® for its effectiveness in reducing blue light emissions.

## Built-in stereo speakers



A pair of high-quality stereo speakers built into a display device. They may be visible front firing, or invisible down firing, top firing, rear firing etc. depending on model and design.

## Flicker-Free technology



Due to the way brightness is controlled on LED-backlit screens, some users experience flicker on their screen which causes eye fatigue. Philips Flicker-Free technology applies a new solution to regulate brightness and reduce flicker for more comfortable viewing.

## EasyRead mode



EasyRead mode for a paper-like reading experience

## TUV Rheinland Eyesafe - RPF 40

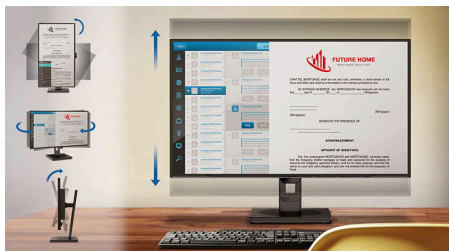


Philips display meets the TUV Rheinland Eyesafe® standard to truly protect you from long exposure to blue light. The always-on blue light filter not only helps reduce digital eye strain, but also guarantees colour integrity.



## Highlights

### SmartErgoBase



The SmartErgoBase is a monitor base that delivers ergonomic display comfort and provides cable management. The base can swivel, tilt and rotate to various angles to ensure maximum comfort. The height-adjustable stand guarantees the optimal viewing level, reducing the physical strains of a long workday, while cable management reduces cable clutter and keeps the workspace neat and professional.

### High-speed data transfer

USB 3.2 high-speed data transfer

### USB-C Docking with RJ45



Simplify all peripherals from monitor to PC using one-cable docking USB Type-C connector, including networking, high-resolution video output from PC to monitor, and surfing on the Internet without an additional network cable, even without a LAN port on your notebook. RJ45 connection through USB-C offers a fast and

secure connection when needed. Getting the fastest data speeds allows you to transfer data from a HDD to your PC faster than ever. Additionally, USB-C with power delivery can even enable you to power and charge your notebook from the monitor, eliminating the need for extra power cables.



# Specifications

## Picture/Display

**Panel Size:** 23.8 inch/60.47 cm  
**Aspect ratio:** 16:9  
**LCD panel type:** IPS technology  
**Backlight type:** W-LED system  
**Pixel pitch:** 0.2745 (H) mm x 0.2745 (V) mm  
**Optimum resolution:** 1920 x 1080 @ 60 Hz  
**Brightness:** 300 cd/m<sup>2</sup>  
**Display colours:** 16.7M (8 bit)  
**Colour gamut (typical):** sRGB 110% , NTSC 96% \*  
**Contrast ratio (typical):** 1500:1  
**SmartContrast:** 50,000,000:1  
**Response time (typical):** 4 ms (Grey to Grey)\*  
**Viewing angle:** 178° (H)/178° (V), @ C/R > 10  
**Picture enhancement:** SmartImage  
**Maximum resolution:** 1920 x 1080 @ 120 Hz  
**Effective viewing area:** 527.04(H) x 296.46(V) mm  
**Scanning Frequency:** 30k-140 k Hz (H) / 48-120 Hz (V)  
**sRGB**  
**SoftBlue**  
**Flicker-free**  
**Pixel Density:** 93 PPI  
**Display Screen Coating:** Anti-Glare, 3H, Haze 25%  
**EasyRead**  
**Adaptive sync**  
**EyeSafe**

## Connectivity

**Signal Input:** HDMI 1.4 x 1, DisplayPort 1.4 x 1, USB-C x 1 (upstream, DP Alt mode, Data, PD)  
**Sync Input:** Separate Sync, Sync on Green  
**Audio (In/Out):** Audio out  
**RJ45:** Ethernet LAN (USB 2.0: 10 M/100 M; USB 3.0: 1000 M)  
**Signal Output:** DP out  
**HDCP:** HDCP 1.4 (HDMI/DisplayPort)  
**USB Hub:** USB3.2, Gen1, 5G, upstream: 1 x USB-C (Full), downstream: USB-A x 4 (with x 1 fast charge B.C 1.2)

## Power Delivery

**Max power delivery:** Up to 90 W (5 V/3 A, 7 V/3 A, 9 V/3 A, 10 V/3 A, 12 V/3 A, 15 V/3 A, 20 V/4.5 A)  
**Version:** USB PD version 3.0

## Convenience

**Built-in Speakers:** 2 W x 2  
**Plug and Play Compatibility:** DDC/CI, Mac OS, sRGB, Windows 11/10  
**User convenience:** SmartImage, Input, Brightness, Menu, Power On/Off  
**OSD Languages:** Brazil Portuguese, Czech, Dutch, English, French, Finnish, German, Greek, Hungarian, Italian, Japanese, Korean, Portuguese, Polish, Russian, Simplified Chinese, Spanish, Swedish, Traditional Chinese, Turkish, Ukrainian  
**Other convenience:** Kensington lock, VESA mount (100 x 100 mm)  
**Control software:** SmartControl

## Stand

**Height adjustment:** 150 mm  
**Pivot:** -/+90 degree  
**Swivel:** -/+ 180 degree  
**Tilt:** -5/30 degree

## Power

**ECO mode:** 10.4 W (typ.)  
**Power supply:** Built-in, 100–240 VAC, 50–60 Hz  
**Off mode:** 0.3 W (typ)  
**On mode:** 13.53 W (typ.) (Energy Star test method)  
**Standby mode:** 0.3 W (typ)  
**Power LED indicator:** Operation - White, Standby mode - White (flashing)  
**Energy Label Class:** C

## Dimensions

**Packaging in mm (W x H x D):** 690 x 395 x 124 mm  
**Product without stand (mm):** 542 x 320 x 48 mm  
**Product with stand (max height):** 542 x 499 x 228 mm

## Weight

**Product with packaging (kg):** 7.75 kg  
**Product with stand (kg):** 5.72 kg  
**Product without stand (kg):** 3.70 kg

## Operating conditions

**Altitude:** Operation: +12,000 ft (3658 m), Non-operation: +40,000 ft (12,192 m)  
**Temperature range (operation):** 0°C to 40 °C  
**Relative humidity:** 20%-80 %  
**Temperature range (storage):** -20°C to 60 °C  
**MTBF (demonstrated):** 70,000 hrs (excluded backlight)

## Sustainability

**Environmental and energy:** Energy Star, EPEAT\*, RoHS  
**Post-consumer recycled plastic:** 85%  
**Recyclable packaging material:** 100 %  
**Specific Substances:** PVC/BFR free housing

## Compliance and standards

**Regulatory Approvals:** ETL, CEC, CB, TUV/GS, TUV Ergo, TCO Certified, TCO Certified Edge, EAC, EAEU RoHS, MEPS, CE Mark, UKCA, EMF, FCC, ICES-003, TÜV Rheinland Low Blue Light (Hardware Solution), eyesafe® CERTIFIED 2.0

## Cabinet

**Finish:** Texture  
**Foot:** Black  
**Front bezel:** Black  
**Rear cover:** Black

## What's in the box?

**Cables:** HDMI cable, DisplayPort cable, USB-C to C cable, Power cable  
**Monitor with stand**  
**User Documentation**

