

# PHILIPS



QD OLED gaming  
monitor

4K UHD gaming  
monitor

Evnia 8000

31.5" (80cm)

3840 x 2160 (4K UHD)



32M2N8900

## Gaming beyond innovation

This monitor produces incredible visuals. Its QD OLED panel is matched with 4K UHD resolution and Display HDR TrueBlack 400 certification, which makes it an absolute powerhouse of visual quality, even at 240Hz.

### Features designed for gamers needs

- AI-enhanced Ambiglow: for intensified entertainment
- Evnia Precision Center: Maximize Your Gaming Experience
- Dynamic Lighting: Synchronize lighting on all devices.
- LowBlue mode and Flicker-free easy-on-the eyes viewing
- Access and display multiple sources on two devices
- Enhanced audio with DTS Sound™

### Built for fast action

- Ultra-fast 240 Hz refresh rate for virtually lag-free gaming

### Immersive visuals

- Ultra Wide-Color wider range of colors for a vivid picture
- UltraClear 4K UHD (3840x2160) resolution for precision
- DisplayHDR™ TrueBlack 400 delivers incredible shadow details
- True 10-bit display reproduces smoother gradients on visuals
- QD OLED for superior colors and vibrant visuals

# 4K UHD gaming monitor

QD OLED gaming monitor

32M2N8900/69

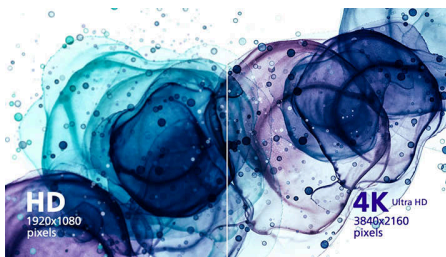
## Highlights

### Ultra-fast 240 Hz refresh rate



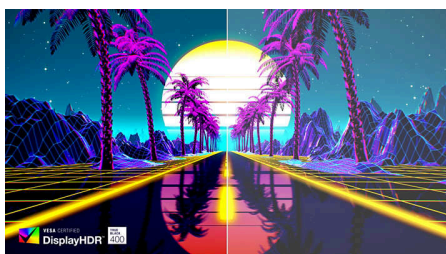
While playing the most intense engaging action-oriented games, ultra-fast 240 Hz refresh rate enhances an ultra-smooth, lag-free gaming experience. This Philips display redraws the screen image up-to 240 times per second, effectively faster than a standard display. Especially for fast-paced games like FPS and racing games, 240 Hz gives a superior motion and clarity visuals. With Philips 240 Hz display, action sequences in gameplay look judder-free and ghost-free. You will experience deeper immersion and feeling alive in game.

### UltraClear 4K UHD resolution



These Philips displays utilize high performance panels to deliver UltraClear, 4K UHD (3840 x 2160) resolution images. Whether you are demanding professional requiring extremely detailed images for CAD solutions, using 3D graphics applications or a financial wizard working on huge spreadsheets, Philips displays will make your images and graphics come alive.

### DisplayHDR™ True Black 400



This Philips monitor is certified with VESA DisplayHDR™ True Black 400. Delivering stunningly accurate shadow detail with deeper

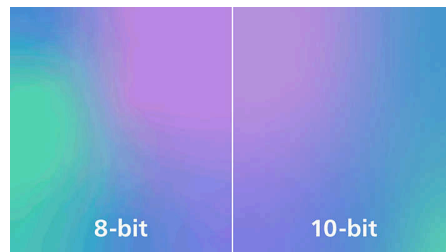
blacks for a remarkable visual experience compared with conventional monitors of the same peak luminance. This Philips monitor comes with several HDR modes, each optimized for your usage scenarios: HDR Game, HDR Movie, HDR Photo, and VESA DisplayHDR certified level.

### Ultra Wide-Color Technology



Ultra Wide-Color Technology delivers a wider spectrum of colors for a more brilliant picture. Ultra Wide-Color wider "color gamut" produces more natural-looking greens, vivid reds and deeper blues. Bring, media entertainment, images, and even productivity more alive and vivid colors from Ultra Wide-Color Technology.

### True 10-bit color depth



With this Philips true 10-bit color display, you can see color critical professional work of exceptional color accuracy and meeting professional standards. Compared with conventional 8-bit color display, this Philips monitor produces a more natural transition between hues for smoother gradients.

### QD OLED technology



QD-OLED represents a hybrid approach that marries the OLED panels and quantum dot technology. By combining what's best of both, QD-OLED guarantees high contrast, deep blacks, and unlimited viewing angles, with the higher peak brightness and more vibrant colors.

### LowBlue mode & Flicker-free



Our LowBlue Mode and Flicker-free technology have been developed to reduce eye strain and fatigue often caused by long hours in front of a monitor.

### AI-enhanced Ambiglow



Our AI-enhanced processor analyzes the incoming image content and continuously adapts the color and brightness of the emitted light to match the image. This feature adds a new dimension to your viewing experience. The innovative Ambiglow uses its AI capabilities to create a truly immersive and customizable gaming experience. From filling your gaming room with color to feeling like you are part of the game, the AI-enhanced Ambiglow is made to make your gaming experience the best it's ever been by combining intelligence, color, and light.



Ultra Wide Color



LowBlue Mode



MultiClient Integrated KVM

# 4K UHD gaming monitor

QD OLED gaming monitor

32M2N8900/69

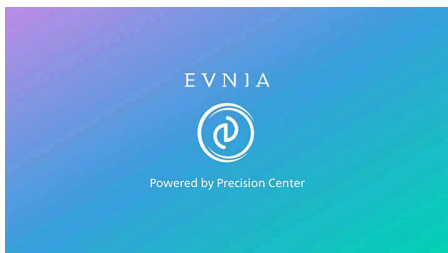
## Highlights

### DTS Sound™



DTS Sound is an audio processing solution designed to optimize the playback of music, movies, streaming and games on the PC regardless of form factors. DTS Sound enables an immersive virtual surround sound experience, complete with rich bass and dialog enhancement and maximized volume levels free of any clipping or distortion.

### Evnia Precision Center



Evnia Precision Center is an easy-to-use software designed to optimize and personalize your Evnia monitor. Whether you're a casual or competitive

gamer, it offers a wide range of customization options to match your unique gaming style. With intuitive controls and seamless navigation, Evnia Precision Center gives you full control, providing everything you need to elevate your gaming to the next level—right at your fingertips.

### MultiView and built-in KVM



Control and switch between two devices through a single keyboard and mouse with the built-in KVM. MultiView lets you survey both sources simultaneously on one screen. With these features, you can reduce cable clutter and save valuable time. Perfect for streamers with two PCs, content creators or when prepping devices for a LAN event.

### Dynamic Lighting



This feature is a Microsoft certification program that enables with users Windows 11 to synchronize and manage the RGB lighting of all their monitors and peripherals from one menu. By doing this, the Dynamic Lighting feature creates a complete RGB lighting ecosystem with Philips Evnia Ambiglow across all devices that ultimately caters to a customizable user experience.



Ultra Wide Color



LowBlue Mode



# 4K UHD gaming monitor

QD OLED gaming monitor

32M2N8900/69

## Specifications

### Picture/Display

**Panel Size:** 31.5"/80cm

**Aspect ratio:** 16:9

**Monitor Panel Type:** QD OLED

**Pixel pitch:** 0.1814 x 0.1814mm

**Brightness:** SDR: 250nits (APL 100%) nit,HDR: 450

(APL 10%) nit, HDR E/P: 1000 (APL 3%) nit

**Display colors:** Color support 1.07 billion colors  
(10 bit)

**Color gamut (typical):** DCI-P3:99%, sRGB:

147.5%, NTSC 120%, Adobe RGB 118%\*

**Contrast ratio (typical):** 1,500,000:1

**SmartContrast:** Mega Infinity DCR

**Response time (typical):** 0.03 ms (Gray to Gray)\*

**Viewing angle:** 178° (H) / 178° (V), @ C/R >

10000

**Picture enhancement:** SmartImage game

**Maximum resolution:** 3840x2160 @ 240 Hz  
(HDMI/DP)

**Effective viewing area:** 699.48(H)x394.73(V)mm

**Scanning Frequency:** 30k-510kHz(H)/ 48-  
240Hz(V)

sRGB

**Delta E:** <2 (sRGB)

**Flicker-free**

**Pixel Density:** 139.87 PPI

**LowBlue Mode**

**Display Screen Coating:** Anti-reflection, 2H

**Low Input Lag**

**EasyRead**

**Adaptive sync**

**HDR:** DisplayHDR True Black 400 certified

**Ambiglow:** 3-sided

**Pixel format:** RGB G-Stripe\*

**Clear MR Tier:** 13000

**Smart Sniper**

**Stark Shadow Boost**

**Windows Dynamic Lighting**

**Smart Crosshair**

### Connectivity

**Signal Input:** HDMI 2.1 x 2, DisplayPort 1.4 x 1,  
USB-C x 1 (DP Alt mode, Video, Data)

**Sync Input:** Separate Sync

**Audio (In/Out):** Audio out

**HDCP:** HDCP 1.4 (HDMI / DisplayPort), HDCP 2.2  
(HDMI / DisplayPort), HDCP 2.3 (HDMI /  
DisplayPort / )

**USB Hub:** USB 3.2 Gen1, 5 Gbps; USB UP, USB-C  
upstream x 1 (DP Alt mode) , USB-A downstream  
x 2 (with 1 for fast charge B.C 1.2)

### Power Delivery

**Max power delivery:** USB-C up to 65 W (5V/3A,  
7V/3A, 9V/3A, 10V/3A, 12V/3A, 15V/3A,  
20V/3.25A)

**Version:** USB PD version 3.0

### Convenience

**Built-in Speakers:** 5 W x 2,DTS Sound

**Plug & Play Compatibility:** DDC/CI, Mac OS X,  
sRGB, Windows 11 / 10

**User convenience:** Power On/Off, Menu/OK,  
Input/Up, Game Settings/Down, SmartImage  
game/Back

**OSD Languages:** Brazil Portuguese, Czech, Dutch,  
English, Finnish, French, German, Greek,  
Hungarian, Italian, Japanese, Korean, Polish,  
Portuguese, Russian, Spanish, Simplified Chinese,  
Swedish, Turkish, Traditional Chinese, Ukrainian  
**Other convenience:** Kensington lock, VESA  
mount (100x100mm), VESA bracket

**MultiView:** PIP/PBP mode, 2x devices

**KVM**

**Low blue light:** Low blue light compliance\*

**Ambiglow:** Ambiglow 3 sided

### Stand

**Height adjustment:** 130 mm

**Swivel:** -/+ 30 degree

**Tilt:** -5/20 degree

### Power

**Power supply:** Internal, 100-240VAC, 50-60Hz

**Off mode:** 0.3 W (typ.)

**On mode:** 130.9 W (typ.)

**Standby mode:** 0.5 W (typ.)

**Power LED indicator:** Operation - White, Standby  
mode- White (blinking)

### Dimensions

**Packaging in mm (WxHxD):** 840 X 510 X 160 mm

**Product without stand (mm):** 717 X 419 X

92 mm

**Product with stand(max height):** 717 x 572 x  
311 mm

### Weight

**Product with packaging (kg):** 13.67 kg

**Product with stand (kg):** 9.65 kg

**Product without stand (kg):** 8.18 kg

### Operating conditions

**Altitude:** Operation: +12,000ft (3,658m), Non-  
operation: +40,000ft (12,192m)

**Temperature range (operation):** 0°C to 40 °C

**MTBF:** 30,000 hour(s)

**Relative humidity:** 20%-80 %

**Temperature range (storage):** -20°C to 60 °C

### Sustainability

**Environmental and energy:** RoHS

**Recyclable packaging material:** 100 %

**Specific Substances:** Mercury free, PVC / BFR free  
housing

**Post consumer recycled plastics:** 35%\*

### Compliance and standards

**Regulatory Approvals:** CB, CE Mark, ETL,  
TUV/ISO9241-307, PSB, EAC, EAEU RoHS, TUV-  
BAUART, BSMI, UKCA, EMF, FCC, ICES-003

### Cabinet

**Color:** White

**Finish:** Textured



\* Active pixels: 3840 (H) x 2160(V). Number of total pixels:  
3856 (H) x 2176 (V); extra pixels on each side, space  
reserved for pixel orbiting.

\* Response time value equal to SmartResponse. The  
measurement pattern is 1 horizontal line.

\* For best output performance, please always ensure that  
your graphic card is capable of achieving the maximum  
resolution and refresh rate of this Philips display.

\* DCI-P3 Coverage based on CIE1976, sRGB Area based on  
CIE1931, NTSC Area and Adobe RGB Area based on  
CIE1976

\* The ratio of display emission light in the range from 415 -  
455 nm to the display emission of 400 - 500 nm shall be  
less than 50%.

\* This monitor strives for sustainability: the base cover and  
headphone holder are made with 35% recycled plastic.

\* The products and accessories listed on this leaflet may  
differ by country and region.

\* The monitor may look different from feature images.