

PHILIPS



2K Full HD TV

LED

108 cm (43") TV

Pixel Plus HD

Dolby Audio

European design



43PFS5500

Small screen. Big value.

Choose quality. Get better value. Enjoy picture and sound quality that matters. With its compact screen, Dolby Audio and lightweight borderless design, this is all about European quality at a price that suit your needs.

Good value. Great performance

- Small, smart and versatile
- Get a better view with HD

Forward thinking design

- European values in design thinking
- Dolby Audio for crisp, clear sound

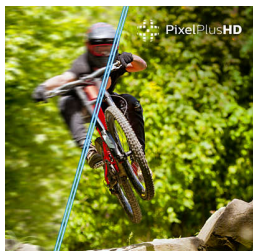
LED

2K Full HD TV

43PF55500/12

Highlights

HD high resolution



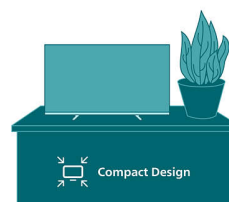
Clear images. Pixel Plus picture sharpness. With high resolution and defined imagery, this LED TV shows that every little detail counts.

Dolby Audio



Listen. Hear each moment. This is crystal clear Dolby Audio. From dialogue to dance and from action movie moments to stunning nature scenes, you can experience clearer sound whether indoors, outdoors or on the go.

Compact design



Size matters. With its small, lightweight and compact design, this smart TV is the perfect fit for any space. Blends in beautifully at home or on the go.

European design

Finding a design that fits in perfectly with your needs can mean everything. Borderless frame. Defined stand. European know-how. This is where design, picture and sound comes together.



Specifications

Picture/Display

Diagonal screen size (inch): 43 inch
Diagonal screen size (metric): 108 cm
Display: LED Full HD
Panel resolution: 1920 x 1080p
Native refresh rate: 60 Hz
Picture engine: Pixel Plus HD
Picture enhancement: Super Resolution, Crystal Clear, Home Cinema, ECO, Movie, Game, Personal, Standard

Display input resolution

Resolution-Refresh rate: 576p - 50 Hz, 640 x 480 - 60 Hz, 720p - 50 Hz/60 Hz, 1366 x 768 - 60 Hz, 1920 x 1080p - 24/25/30/50/60 Hz

Tuner/Reception/Transmission

Digital TV: DVB-T/T2/T2-HD/C/S/S2
Signal strength indication
Teletext: 1000 page Hypertext
HEVC support

Multimedia Applications

Video Playback Formats: AVI, MKV, HEVC, H.264/MPEG-4 AVC, MPEG1, MPEG2, MPEG4, VP9, HEVC (H.265), AV1, MPEG-1, MPEG-2, HEVC, MPEG-4
Music Playback Formats: MP3, WAV, AAC, FLAC
Subtitles Formats Support: SRT, SMI, SSA, SUB, ASS, TXT
Picture Playback Formats: JPEG, GIF, PNG, BMP, HEIF

Sound

Audio: 2.0 Channel
Output power (RMS): 16 W
Speaker configuration: 2 x 8 W full-range

speakers
Sound Enhancement: Incredible Surround
Sound Engine: Basic Sound Engine

Connectivity

Number of HDMI connections: 2
HDMI features: Audio Return Channel
EasyLink (HDMI-CEC): Remote control pass-through, System audio control, System standby, One touch play
Number of USBs: 1
HDCP 2.3: Yes on all HDMI
HDMI ARC: Yes on HDMI1
EasyLink 2.0: External setting via TV UI, HDMI-CEC for Philips TV/SB

Supported HDMI video features

HDR: HLG, HDR10

EU Energy card

EPREL registration numbers: 2302448
Energy class for SDR: E
On mode power demand for SDR: 41 kWh/1000h
Energy class for HDR: n.a.
On mode power demand for HDR: n.a. kWh/1000h
Off mode power consumption: n.a.
Networked standby mode: 2.0 W
Panel technology used: LED LCD

Power

Mains power: AC 100-240 V 50/60 Hz
Standby power consumption: less than 0.5 W
Power Saving Features: Auto switch-off timer, Picture mute (for radio), Eco mode

Accessories

Included accessories: Power cord, 2 x AAA Batteries, Legal and safety brochure, Tabletop stand, Remote Control, Quick start guide

Design

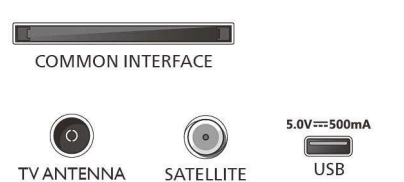
Colours of TV: Plastic black low bezel
Stand design: Plastic charcoal soap bar

Dimensions

Distance between 2 stands: 753 mm
Wall-mount compatible: 200 x 100 mm
TV without stand (W x H x D): 956 x 564 x 87 mm
TV with stand (W x H x D): 956 x 584 x 218 mm
Package carton (W x H x D): 1045 x 650 x 133 mm
Weight of TV without stand: 6.1 kg
Weight of TV with stand: 6.21 kg
Weight incl. packaging: 8.83 kg

Connections

Side



Down



* This television contains lead only in certain parts or components where no technology alternatives exist in accordance with existing exemption clauses under the RoHS Directive.
* The TV supports DVB reception for 'Free to air' broadcast. Specific DVB operators may not be supported. An up-to-date list can be found in the FAQ section of the Philips support website. For some operators Conditional Access and subscription are required. Contact your operator for more information.
* EPG and actual visibility (up to 8 days) is country- and operator-dependent.