

# PHILIPS

QD OLED gaming  
monitor

QHD Gaming  
monitor

Evnia 6000

27" (68.5cm)

2560 x 1440 (Quad HD)

27M2N6500



## Your gaming experience to the utmost

This monitor is built for gaming at high speeds. Its 240Hz refresh rates, QD OLED panel, and DisplayHDR TrueBlack 400 certification make it a combination of incredible speed and premium picture quality.

### Features designed for gamers needs

- Stark ShadowBoost: for enhancing visibility in dark scenes
- Smart Sniper: for zooming in on targets
- Evnia Precision Center: Maximize Your Gaming Experience
- AI-enhanced Ambiglow: for intensified entertainment
- VESA Certified ClearMR: for accurate blur testing
- SmartImage game mode optimized for gamers
- LowBlue mode and Flicker-free easy-on-the eyes viewing
- Smart Crosshair: for better aim and more fun

### Built for fast action

- AMD FreeSync™ Premium Pro; smooth, low latency HDR gaming
- Ultra-fast 240 Hz refresh rate for virtually lag-free gaming
- Certified NVIDIA® G-SYNC® compatible for smooth fast gaming

### Immersive visuals

- Crystalclear images with Quad HD 2560 x 1440 pixels

# QHD Gaming monitor

QD OLED gaming monitor

27M2N6500/75

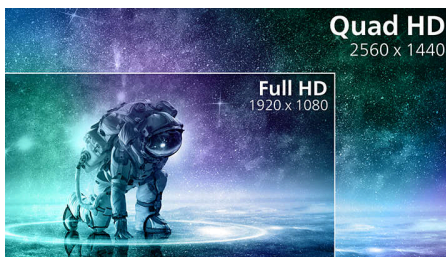
## Highlights

### Ultra-fast 240 Hz refresh rate



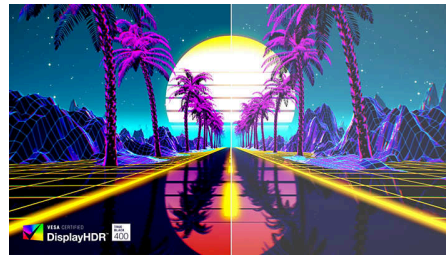
While playing the most intense engaging action-oriented games, ultra-fast 240 Hz refresh rate enhances an ultra-smooth, lag-free gaming experience. This Philips display redraws the screen image up-to 240 times per second, effectively faster than a standard display. Especially for fast-paced games like FPS and racing games, 240 Hz gives a superior motion and clarity visuals. With Philips 240 Hz display, action sequences in gameplay look judder-free and ghost-free. You will experience deeper immersion and feeling alive in game.

### Crystalclear images



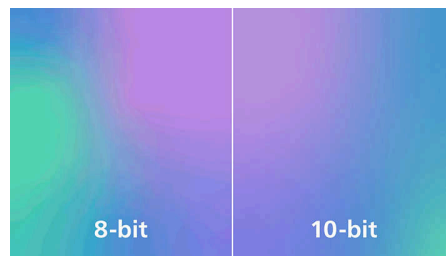
These Philips screens deliver Crystalclear, Quad HD 2560x1440 or 2560x1080 pixel images. Utilizing high performance panels with high density pixel count, enabled by high bandwidth sources, these new displays will make your images and graphics come alive. Whether you are demanding professional requiring extremely detailed information for CAD-CAM solutions, using 3D graphic applications or a financial wizard working on huge spreadsheets, Philips displays will give you Crystalclear images.

### DisplayHDR™ True Black 400



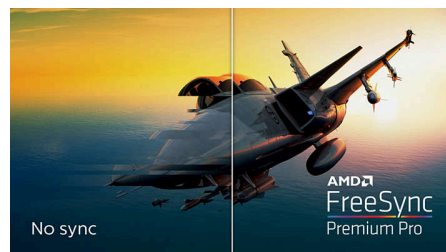
This Philips monitor is certified with VESA DisplayHDR™ True Black 400. Delivering stunningly accurate shadow detail with deeper blacks for a remarkable visual experience compared with conventional monitors of the same peak luminance. This Philips monitor comes with several HDR modes, each optimized for your usage scenarios: HDR Game, HDR Movie, HDR Photo, and VESA DisplayHDR certified level.

### True 10-bit color depth



With this Philips true 10-bit color display, you can see color critical professional work of exceptional color accuracy and meeting professional standards. Compared with conventional 8-bit color display, this Philips monitor produces a more natural transition between hues for smoother gradients.

### AMD FreeSync™ Premium Pro



Gaming shouldn't be a choice between choppy gameplay or broken frames. AMD FreeSync™ Premium Pro provides the true HDR gaming experience: a combination of smooth gaming at peak performance, and exceptional high dynamic range visuals while still maintaining low latency.

### QD OLED technology



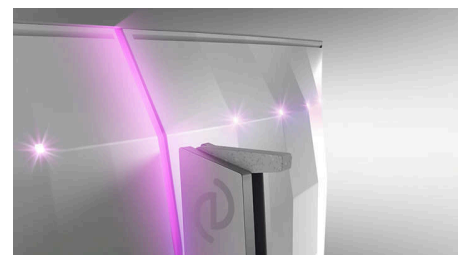
QD-OLED represents a hybrid approach that marries the OLED panels and quantum dot technology. By combining what's best of both, QD-OLED guarantees high contrast, deep blacks, and unlimited viewing angles, with the higher peak brightness and more vibrant colors.

### LowBlue mode & Flicker-free



Our LowBlue Mode and Flicker-free technology have been developed to reduce eye strain and fatigue often caused by long hours in front of a monitor.

### AI-enhanced Ambiglow



Our AI-enhanced processor analyzes the incoming image content and continuously adapts the color and brightness of the emitted light to match the image. This feature adds a new dimension to your viewing experience. The innovative Ambiglow uses its AI capabilities to create a truly immersive and customizable gaming experience. From filling your gaming room with color to feeling like you are part of the game, the AI-enhanced Ambiglow is made to make your gaming experience the best it's ever been by combining intelligence, color, and light.



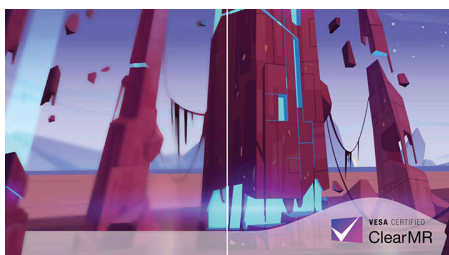
## Highlights

### SmartImage Game mode



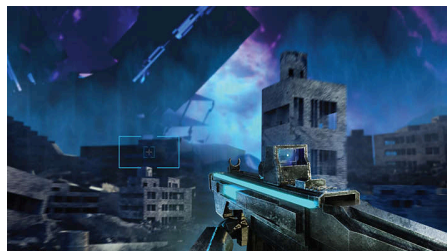
The new Philips gaming display has quick access OSD fine tuned for gamers, offering you multiple options. "FPS" mode (First person shooting) improves dark themes in games, allowing you to see hidden objects in dark areas. "Racing" mode adapts display with fastest response time, high color, along with image adjustments. "RTS" mode (Real time strategy) has a special SmartFrame mode which enables highlighting of specific area and allows for size and image adjustments. Gamer 1 and Gamer 2 enable you to save personal customized settings based on different games, ensuring best performance.

### VESA ClearMR 13000



Previously, methods to test blur on screen were measured through MRPT. VESA Certified ClearMR acts as an alternative to MRPT and is designed to reflect the true nature of blur through digital high-speed camera testing. For monitors that are sent in and certified through VESA Certified ClearMR, you can rest assured that you will have an accurate assessment of the monitor's blur quality. Each certification is defined through a CMR range; with this monitor being ClearMR 13000 classified, it has one of the highest classifications of image quality, meaning less overall blur.

### Smart Crosshair



Color of Crosshair is set by default. When Smart Crosshair is on, the color will change as complementary color to the background color. Smart Crosshair enhances the accuracy of aiming so you can spot the enemies more easily.

### Stark ShadowBoost



This feature enhances dark scenes without overexposing lightened areas. The Stark Shadowboost feature has three selectable levels that offer texturized images with better color saturation with higher contrast so you can see better in both light and dark environments. In addition, this feature helps you fine-tune your sight so that enemies get exposed more quickly when gaming.

### Smart Sniper



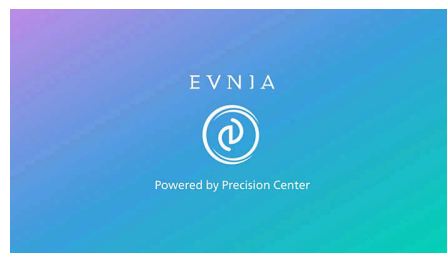
This feature enables you to zoom in to multiple targets at once; ultimately making it easier to aim and hit your enemies.

### NVIDIA® G-SYNC® compatible



When playing intense games with high refresh rates, screen tearing may appear without optimal graphics synchronization. This Philips display is certified as NVIDIA® G-SYNC® compatible, reducing screen tearing and syncing your monitor's refresh rate with your graphic card's output for a smoother gaming experience. Scenes appear instantly, objects look sharper, and gameplay is smooth, giving you a stunning visual experience and a serious competitive edge.

### Evnia Precision Center



Evnia Precision Center is an easy-to-use software designed to optimize and personalize your Evnia monitor. Whether you're a casual or competitive gamer, it offers a wide range of customization options to match your unique gaming style. With intuitive controls and seamless navigation, Evnia Precision Center gives you full control, providing everything you need to elevate your gaming to the next level—right at your fingertips.



# QHD Gaming monitor

QD OLED gaming monitor

27M2N6500/75

## Specifications

### Picture/Display

**Panel Size:** 26.5"/67.3cm  
**Aspect ratio:** 16:9  
**Monitor Panel Type:** QD OLED  
**Pixel pitch:** 0.2292 x 0.2292 mm  
**Brightness:** SDR: 250nits (APL 100%), HDR: 450nits (APL 10%), HDR E/P: 1000nits (APL 3%) cd/m<sup>2</sup>  
**Display colors:** 1.07B (10bits)  
**Color gamut (typical):** Adobe RGB 98%; DCI-P3:99%, sRGB: 147.5%, NTSC 120%.\*  
**Contrast ratio (typical):** 1.5M:1  
**SmartContrast:** Mega Infinity DCR  
**Response time (typical):** 0.03ms (Gray to Gray)\*  
**Viewing angle:** 178° (H) / 178° (V), @ C/R > 10000  
**Picture enhancement:** SmartImage game  
**Maximum resolution:** 2560x1440 @ 240 Hz (DP); 2560x1440 @ 144Hz (HDMI)\*  
**Effective viewing area:** 590.42(H) x 333.72(V) mm  
**Scanning Frequency:** HDMI: 30k-230kHz(H)/ 48-144Hz(V), DPI: 30k-360kHz(H)/ 48-240Hz(V)  
**sRGB**  
**Delta E:** < 2 (sRGB)  
**Flicker-free**  
**Pixel Density:** 110.84 PPI  
**Display Screen Coating:** Anti-reflection, 2H  
**SmartUniformity:** 93 ~ 105%  
**Low Input Lag**  
**EasyRead**  
**G-SYNC**  
**HDR:** HDR True Black 400  
**Pixel format:** RGB Q-Stripe\*  
**Smart Crosshair**  
**Stark ShadowBoost**  
**Clear MR Tier:** 13000  
**Smart Sniper**

### Connectivity

**Signal Input:** HDMI 2.0 x 2, DisplayPort 1.4 x 1  
**Sync Input:** Separate Sync  
**Audio (In/Out):** Headphone out  
**HDCP:** HDCP 1.4 (HDMI / DisplayPort), HDCP 2.2 (HDMI / DisplayPort)  
**USB Hub:** USB 3.2 Gen 1 / 5 Gbps, USB-B upstream x 1, USB-A downstream x 2 (with 1 for fast charge)

### Convenience

**Plug & Play Compatibility:** DDC/CI, Mac OS, sRGB, Windows 11 / 10  
**User convenience:** Power On/Off, Menu/OK, Input/Up, Game Settings/Down, SmartImage game/Back  
**OSD Languages:** Brazil Portuguese, Czech, Dutch, English, Finnish, French, German, Greek, Hungarian, Italian, Japanese, Korean, Polish, Portuguese, Russian, Spanish, Simplified Chinese, Swedish, Turkish, Traditional Chinese, Ukrainian  
**Other convenience:** Kensington lock, VESA mount (100x100mm), LowBlue Mode  
**MultiView:** 2x devices, PIP/PBP mode  
**Ambiglow:** Ambiglow 3 sided  
**Low blue light:** Yes\*

### Stand

**Height adjustment:** 130 mm  
**Swivel:** +/- 30 degree  
**Tilt:** -5/20 degree

### Power

**Power supply:** Internal, 100-240VAC, 50-60Hz  
**Off mode:** 0.3 W (typ.)  
**On mode:** 81.2 W (typ.)  
**Standby mode:** 0.5 W (typ.)  
**Power LED indicator:** Operation - White, Standby mode- White (blinking)

### Dimensions

**Packaging in mm (WxHxD):** 780 x 445 x 141 mm  
**Product without stand (mm):** 609 x 358 x 61 mm  
**Product with stand(max height):** 609 x 533 x 261 mm

### Weight

**Product with packaging (kg):** 10.88 kg  
**Product with stand (kg):** 7.22 kg  
**Product without stand (kg):** 5.77 kg

### Operating conditions

**Altitude:** Operation: +12,000ft (3,658m), Non-operation: +40,000ft (12,192m)  
**Temperature range (operation):** 0°C to 40 °C  
**MTBF:** 30,000 (Excluded backlight) hour(s)  
**Relative humidity:** 20%-80 %  
**Temperature range (storage):** -20°C to 60 °C

### Sustainability

**Environmental and energy:** RoHS  
**Recyclable packaging material:** 100 %  
**Post consumer recycled plastics:** 85%\*

### Compliance and standards

**Regulatory Approvals:** CB, CE Mark, PSB, CEL, CCC, BSMI, UKCA, EMF, FCC, ICES-003

### Cabinet

**Color:** Dark Slate  
**Finish:** Textured

### Design

Designed in Amsterdam, NL



\* For best output performance, please always ensure that your graphic card is capable of achieving the maximum resolution and refresh rate of this Philips display.  
\* Low blue light compliance: The ratio of display emission light in the range from 415 - 455 nm to the display emission of 400 - 500 nm shall be less than 50%.  
\* Adobe RGB and DCI-P3 Coverage based on CIE1976, sRGB Area based on CIE1931, NTSC Area based on CIE1976.  
\* Response time value equal to SmartResponse. The measurement pattern is 1 horizontal line.  
\* The max resolution of QHD 144Hz is supported by 8 bits  
\* Active pixels: 2560(H) x 1440(V) Number of total pixels: 2576(H) x 1456(V); extra pixels on each side, space reserved for pixel orbiting.  
\* NVIDIA® G-SYNC® support interface: DisplayPort  
\* Make sure to update NVIDIA® G-SYNC® driver to the latest version, see more information on NVIDIA website: <https://www.nvidia.com/>  
\* Make sure your graphic card supports NVIDIA® G-SYNC®  
\* This monitor strives for sustainability: the stand's feet and headphone holder are made with 35% recycled plastic and monitor's chassis is made up of 85% post-consumer recycled plastic.  
\* The monitor may look different from feature images.  
\* The products and accessories listed on this leaflet may differ by country and region.