

PHILIPS

Full HD LCD monitor

Monitor

1000 series

27" (68.6 cm)

1920 x 1080 (Full HD)

27E1N1200A



Work in style

Experience productivity in Full HD. This monitor is equipped with essentials for the workplace, such as LowBlue mode to protect the eyes, IPS LED wide-view technology for high-quality imagery and 1 ms MPRT for sharp visuals.

Design to enhance the senses

- 120 Hz refresh rates for ultra-smooth, brilliant images

Designed for the way you work

- SoftBlue Technology: for comfortable viewing

Good for Gaming

- 1 ms (MPRT) fast response for crisp images and smooth gameplay
- Effortlessly smooth action with Adaptive-Sync technology

Easy to experience

- Built-in stereo speakers for multimedia
- VESA mount for convenience
- HDMI ensures universal digital connectivity
- DisplayPort connection for maximum visuals

Superb Picture Quality

- SmartContrast for deep black level details

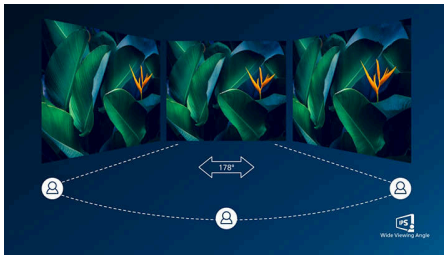
Monitor

Full HD LCD monitor

27E1N1200A/00

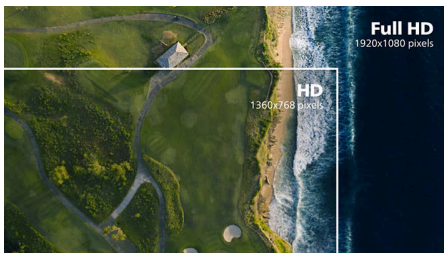
Highlights

IPS technology



IPS displays use an advanced technology that gives you extra-wide viewing angles of 178/178 degrees, making it possible to view the display from almost any angle. Unlike standard TN panels, IPS displays give you remarkably crisp images with vivid colours, making them ideal not only for Photos, movies and web browsing, but also for professional applications that demand colour accuracy and consistent brightness at all times.

16:9 Full HD display



Picture quality matters. Regular displays deliver quality, but you expect more. This display features enhanced Full HD 1920 x 1080 resolution. With Full HD for crisp detail paired with high brightness, incredible contrast and realistic colours, expect a true-to-life picture.

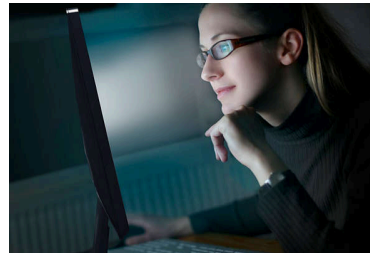
SmartContrast



SmartContrast is a Philips technology that analyses the contents you are displaying, automatically adjusting colours and controlling

backlight intensity to dynamically enhance contrast for the best digital images and videos or when playing games where dark hues are displayed. When Economy mode is selected, contrast is adjusted and backlighting fine-tuned for just-right display of everyday office applications and lower power consumption.

SoftBlue Technology



SoftBlue LED technology, combined with the monitor's low blue light panel, is an effective solution to reduce the adverse health effects caused by high exposure to blue light. In this monitor's panel, the ratio of light is reduced by nearly 50%, while the SoftBlue LED technology works simultaneously by reducing harmful blue light rays emitted from the screen. Not to mention, the SoftBlue LED technology is tested and certified by TÜV Rheinland Eyesafe for its effectiveness in reducing blue light emissions.

HDMI Ready



An HDMI-ready device has all the required hardware to accept High-Definition Multimedia Interface (HDMI) input. An HDMI cable enables high-quality digital video and audio to be transmitted over a single cable from a PC or any number of AV sources (including set-top boxes, DVD players, A/V receivers and video cameras).

DisplayPort connection



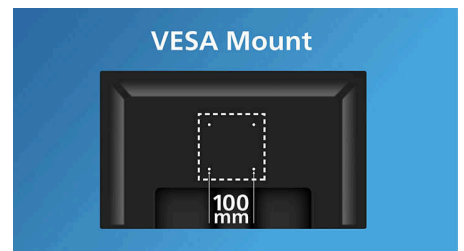
DisplayPort is a digital link from PC to monitor without any conversion. With higher capabilities than DVI standard, it is fully capable to support up to 15 metre cables and 10.8 Gbps/sec data transfer. With this high performance and zero latency, you get the fastest imaging and refresh rates — making DisplayPort the best choice for not only general office or home use, but also for the more demanding gaming and films, video editing and more. It also keeps interoperability in mind via the use of various adapters.

Built-in stereo speakers



A pair of high-quality stereo speakers built into a display device. They may be visible front firing, or invisible down firing, top firing, rear firing etc. depending on model and design.

VESA mount for convenience

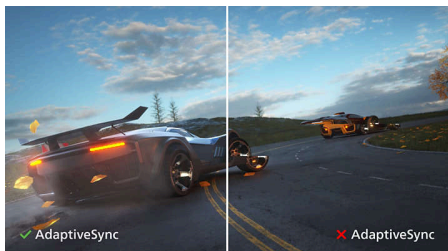


VESA mount for convenience



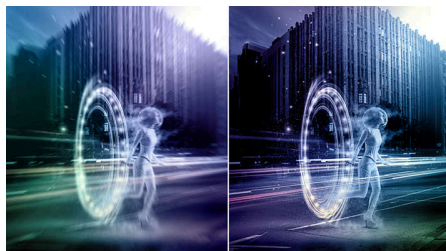
Highlights

Adaptive-Sync technology



Gaming shouldn't be a choice between choppy gameplay or screen tearing. Get fluid, artefact-free performance at virtually any framerate with Adaptive-Sync technology, smooth, quick refresh and ultra-fast response time.

1 ms MPRT fast response



MPRT (motion picture response time) is a more intuitive way to describe response time, which directly refers to the duration between seeing blurry noise and clean, crisp images. The Philips monitor with 1 ms MPRT effectively eliminates smearing and motion blur and delivers sharper and more precise visuals to enhance your gaming experience. The best choice for playing thrilling and twitch-sensitive games.

120 Hz Gaming



You play intense, competitive games. You demand a display with lag-free, ultra-smooth images. This Philips display redraws the screen image up to 120 times per second, effectively faster than a standard display. A lower frame rate can make enemies appear to jump from spot to spot on the screen, making them difficult targets to hit. With 120 Hz frame rate, you get those critical missing images on the screen, showing enemy movement in ultra-smooth motion so you can easily target them. With ultra-low input lag and no screen tearing, this Philips display is your perfect gaming partner.

Monitor

Full HD LCD monitor

27E1N1200A/00

Specifications

Picture/Display

Panel Size: 27 inch/68.6 cm
Aspect ratio: 16:9
LCD panel type: IPS technology
Backlight type: W-LED system
Pixel pitch: 0.3114 x 0.3114 mm
Brightness: 300 cd/m²
Display colours: 16.7 M
Colour gamut (typical): Adobe RGB 81.15%; DCI-P3:79.86%, sRGB: 104.02%,NTSC 91.27% *
Contrast ratio (typical): 1500:1
SmartContrast: Mega Infinity DCR
Response time (typical): 4 ms (Grey to Grey)*
Viewing angle: 178° (H)/178° (V), @ C/R > 10
Picture enhancement: SmartImage
Maximum resolution: 1920 x 1080 @ 120 Hz
Effective viewing area:
597.89 (H) x 336.31 (V) mm
Scanning Frequency: VGA: 30 k-85 kHz (H)/48-75 Hz(V); HDMI: 30 k-140 kHz, 48-120 Hz (V)
sRGB
SoftBlue
Flicker-free
Pixel Density: 81.59 PPI
LowBlue Mode
Display Screen Coating: Anti-Glare, 3H, Haze 25%
MPRT: 1 ms
EasyRead
Adaptive sync

Connectivity

Signal Input: VGA x 1, HDMI 1.4 x 1, DisplayPort 1.2 x 1
Sync Input: Separate Sync
Audio (In/Out): Audio out, Audio-in
HDCP: HDCP 1.4 (HDMI, DisplayPort)

Convenience

Built-in Speakers: 2 W x 2
Plug and Play Compatibility: DDC/CI, Mac OS X, sRGB, Windows 11/10
User convenience: Power On/Off, Menu, Volume, Input, SmartImage
OSD Languages: Brazil Portuguese, Czech, Dutch, English, Finnish, French, German, Greek, Hungarian, Italian, Japanese, Korean, Polish, Portuguese, Russian, Simplified Chinese, Spanish, Swedish, Traditional Chinese, Turkish, Ukrainian
Other convenience: Kensington lock, VESA mount (100 x 100 mm)

Stand

Tilt: -5/20 degree

Power

Power supply: Internal, 100–240 VAC, 50–60 Hz
Off mode: 0.3 W (typ.)
On mode: 20.2 W (typ.)
Standby mode: 0.5 W (typ.)
Power LED indicator: Operation - White, Standby mode - White (flashing)

Dimensions

Packaging in mm (W x H x D):
690 x 455 x 141 mm
Product without stand (mm): 617 x 357 x 46 mm
Product with stand (max height):
617 x 457 x 211 mm

Weight

Product with packaging (kg): 6.56 kg
Product with stand (kg): 3.97 kg
Product without stand (kg): 3.55 kg

Operating conditions

Altitude: Operation: +12,000 ft (3658 m), Non-operation: +40,000 ft (12,192 m)
Temperature range (operation): 0 to 40 °C
MTBF: 50,000 hrs (excluding backlight) hour(s)
Relative humidity: 20%-80 %
Temperature range (storage): -20 to 60 °C

Sustainability

Environmental and energy: RoHS
Recyclable packaging material: 100 %
Specific Substances: Mercury free

Compliance and standards

Regulatory Approvals: CB, CE Mark, TUV/ISO9241-307, TUV-BAUART, EAEU RoHS, MEPS, PSB, PSE, BSMI, VCCI, UKCA, EMF, FCC, ICES-003

Cabinet

Colour: Black
Finish: Textured

What's in the box?

Cables: HDMI cable, Power cable
User Documentation



* Adobe RGB and DCI-P3 Coverage based on CIE1976, sRGB Area based on CIE1931, NTSC Area based on CIE1976.

* Response time value equal to SmartResponse

* MPRT adjusts the brightness for blur reduction, so the brightness cannot be adjusted while MPRT is turned on. To reduce motion blur, the LED backlight will strobe in time with the screen refresh rate, which may cause a noticeable change in brightness.

* MPRT is a gaming-optimised mode. Turning on MPRT may cause noticeable screen flickering. It is recommended to turn this mode off when you are not using the gaming function.

* The products and accessories listed on this leaflet may differ by country and region.

* The monitor may look different from feature images.