

PHILIPS

AVENT



Double Electric
Breast Pump

Hands-free



SCF532/11

Free your hands. Free your time.

Mimics your baby's drinking rhythm

The Philips Avent Hands-free Double Electric Breast Pump is made for effective* and comfortable expression. It mimics your baby's rhythm, and with power, gentleness and lightness, it's your ideal hands-free pump companion.

Physical freedom while expressing

- Move freely with the ultra-light collection cups
- Wearable comfort for maximum movement

Mimics baby's drinking rhythm

- Express effectively* with a rhythm that mimics your baby's
- Quiet hospital-strength pumping

Easy to use, simple to clean and assemble

- Track milk flow with the fully transparent collection cups
- Easy to clean and assemble with few parts
- Personalize your pumping session

Inclusive, seamless fit

- Silicone shields gently shape to your breasts
- A range of breast shield and insert sizes for every mom

Hands-free

Double Electric Breast Pump

SCF532/11

Highlights

Mimics baby's drinking rhythm



Babies know how to drink best! That's why our hands-free electric breast pump mimics their natural drinking rhythm – so you can find your own rhythm for effective* expression and optimal milk output. Pumping up to 85 times per minute, the Philips Avent Hands-free Breast Pump is 2x faster than most other pumps**.

Hospital-strength motor



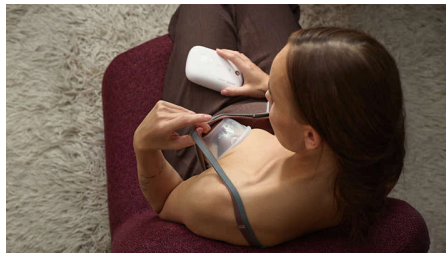
The nearly silent motor unit delivers the hospital-strength power you expect from a traditional breast pump, yet from a compact and wearable unit. With its rechargeable battery, the cordless motor unit pumps powerfully and discreetly anywhere.

Unique SkinSense shields



Our unique SkinSense silicone breast shields are designed for ultimate comfort, softly shaping around your breasts using your body's natural warmth. The breast shields are made with food-grade silicone for complete peace of mind.

Transparent collection



The see-through collection cups provide an unobstructed view inside. They help you correctly place your nipples for your best milk output, and visually track the volume of breast milk. For confident pumping from the first drop until finish.

Ultra-light collection cup



One collection cup weighs just a little over 100 grams when empty - up to 3x lighter than a fully wearable breast pump. The cups sit comfortably in-bra with barely a sign they're there.

Wear it your way



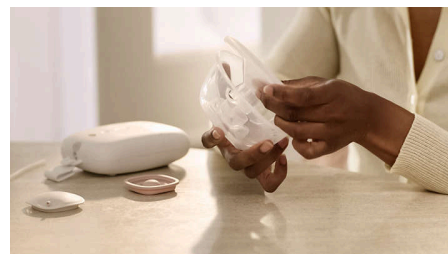
Our pump comes with a braided carrying cord and apparel clip for wearing the motor unit cross-body or attached to your waistband. With the freedom to wear it your way, you stay in your flow knowing control is right by your side. Use the tube coupler and cord adjuster to precisely fine-tune your fit.

Personalized pumping



Get the most from every session with 8 suction levels for stimulating the flow of milk and 16 suction levels for expressing it. You can fine-tune as you pump, and with your ideal setting automatically memorized, your pump is always ready to go.

Easy to clean and assemble



We designed our pump and accessories to be as simple as possible. With only a few connecting pieces, each collection cup is a breeze to take apart, clean (by hand or in a dishwasher), disinfect and put back together.

Find the right fit



We support every mom to feel their best and having the right fit is an essential part of that. Our range of breast shields and shield insert sizes fits 99% of moms. Available to buy separately, you can experience your ultimate comfort while pumping.

Hands-free

Double Electric Breast Pump

SCF532/11

Specifications

Power

Source: Rechargeable battery / USB-C (adapter not included)

Material

Cup, front cap, breast shield cover:

Polypropylene

Breast shield, membrane, valve, insert: Liquid silicone

Silicone tube: Silicone

What is included

USB-C cable: 1 pcs

Carrying cord: 1 pcs

Tube coupler: 1 pcs

Rechargeable motor unit (with a detachable clip): 1 pcs

Collection cup (assembled): 2 pcs

Silicone tubes: 2 pcs

Breast shield (dust) cover: 2 pcs

Breast shield (21 mm, 24 mm): 2 pcs each

Nipple sizing card: 1 pcs

Insert 19 mm: 2 pcs

Ease of use

Breast pump use: Easy to use, simple to clean and assemble

Functions

Flexibility in movement: Hands-free pumping

Personalization settings: 16 suction levels in expression mode, 8 suction levels in stimulation mode

Motor unit: Rechargeable battery / USB-C, Fully charging the battery takes up to 1.5 hours and lasts approx. 5 pumping sessions

Breast shield and insert specifics: Several sizes available for the best fit

Consumer Trade Item

Height: 21 cm

Width: 17.5 cm

Length: 15.5 cm

Net weight: 0.809 kg

Gross weight: 1.152 kg

GTIN: 8720689036009

Country of origin: VN

Outer Carton

Height: 22.8 cm

Width: 16.5 cm

Length: 18.5 cm

Net weight: 0.8089 kg

Gross weight: 1.37 kg

GTIN: 18720689033517

Pallet Layer

Height: 22.8 cm

Width: 80 cm

Length: 120 cm

Pallet

Height: 105.7 cm

Width: 80 cm

Length: 120 cm

Net weight: 82.208 kg

Gross weight: 137.696 kg

GTIN: 68720689033512

Other

Height: 105.7 cm

Width: 80 cm

Length: 120 cm

GTIN: 68720689036001

