

# PHILIPS



IPL Hair Removal device  
with SenseIQ 2.0

Lumea IPL 9000 Series

Smart sensors

5 intensity settings

4 attachments\*\*\*\*\*

Lumea IPL app



BRI984/02

## Enjoy 12-months of smooth skin\*

Gentle, fast and effective hair reduction

Discover our IPL solution for long-lasting smooth skin\*\*. Our Lumea IPL device with SenseIQ 2.0 takes personalized hair removal to the next level.

### **Suitable for different body areas and skin tones**

- 4 attachments designed for each curve of your body\*\*\*\*\*

### **Personalized hair removal with SenseIQ 2.0**

- SenseIQ 2.0 for hair removal personalized to you

### **Optimize your routine with Philips Lumea IPL app**

- Philips Lumea App for a personalised IPL experience

### **Clinically proven performance**

- Clinically proven effectiveness

### **Suitable for different body areas and skin tones**

- Suitable for a range of skin tones and hair colors

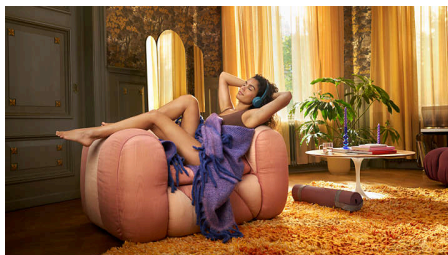
## Lumea IPL 9000 Series

IPL Hair Removal device with SenseIQ 2.0

BRI984/02

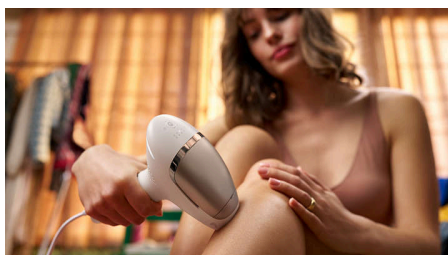
# Highlights

### Long-lasting hair reduction\*\*



Lumea IPL uses warm, gentle pulses of light to put hair to sleep, preventing it from growing back for up to 12 months\*\*\*.

### Fast results



It only takes you 4 treatments to achieve up to 93% hair reduction on lower legs\*\*\*\*. Treat every two weeks for the first four treatments, then save time by touching-up once a month. That's it, it takes no more than 11 minutes to cover both lower legs\*\*\*\*\*.

### SenseIQ 2.0 technology



Our SenseIQ 2.0 technology is here for a personalized hair removal treatment. With our signature combination of: Improved smart

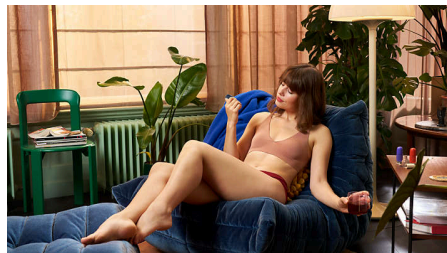
sensors that measure your skin tone and support you in selecting a setting for a comfortable treatment, four attachments designed for each curve of your body, and the Philips Lumea IPL app.

### 4 attachments



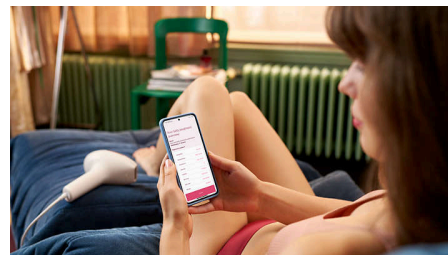
The body attachment is curved-in for optimal skin contact when treating large areas like legs. The precision attachments are curved-out for precise and effective use on bikini and armpit areas. The face attachment has a small, flat design and an extra integrated filter designed for gentle use on the upper lip, chin and jawline\*\*\*\*\*.

### Clinically tested



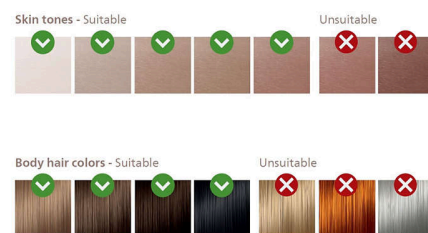
Developed in cooperation with dermatologists for safe use\*\*\*\*\* and tested with more than 3000 women, Philips Lumea delivers clinically-proven performance from the comfort of your home. Chosen by over 5.5 million consumers worldwide.

### Philips Lumea IPL app



Philips Lumea IPL comes with an App with guided steps that helps you get the most from your IPL.

### For a range of skin tones



IPL requires contrast between the pigments in the hair color and the skin tone and therefore works on naturally dark blonde, brown and black hair and on skin tones from fair to medium brown. Check the chart to see if it's suitable for you. You can choose from multiple light intensity settings to tailor your treatment so it's comfortable for you, based on your skin test.

## Lumea IPL 9000 Series

IPL Hair Removal device with SenseIQ 2.0

BRI984/02

# Specifications

### Technical specs. attachments

**Body treatment attachment:** Shape: Curved, Window size: 4.1 cm<sup>2</sup>, Tailored treatment for body: areas below neckline

**Face treatment attachment:** Shape: Flat + Integrated filter, Window size: 2 cm<sup>2</sup>, Tailored treatment for face: upper lip, chin and jawline\*\*\*\*\*

**Bikini treatment attachment:** Window size: 3 cm<sup>2</sup>, Tailored treatment for bikini area, Shape: Curved

**Underarm treatment attachment:** Window size: 3cm<sup>2</sup>, Tailored treatment for underarms, Shape: Curved

### Safety and adjustable settings

**Integrated UV filter:** Protects skin from UV light  
**5 light energy settings:** Adjustable to your skin type

**Integrated safety system:** Prevents unintentional flashing

**SmartSkin sensor:** The right setting indication on demand

**SenseIQ 2.0:** Setting for a comfortable treatment

### Application mode

**Slide and Flash:** For larger areas (legs)

**Stamp and Flash:** For small body areas (bikini, armpit)

**Corded / cordless use:** Corded use

### Technical specifications

**Voltage:** 100-240 V

**High performance lamp:** 400.000 flashes

### Consumer Trade Item

**Height:** 23 cm

**Width:** 11 cm

**Length:** 24.5 cm

**Net weight:** 0.77 kg

**Gross weight:** 1.136 kg

**GTIN:** 8720689019118

**Country of origin:** SI

**Harmonized system code:** 85437090

### Outer Carton

**Height:** 24 cm

**Width:** 23.4 cm

**Length:** 25.5 cm

**Net weight:** 1.54 kg

**Gross weight:** 2.553 kg

**GTIN:** 18720689019115

### Pallet

**Height:** 109.6 cm

**Width:** 80 cm

**Length:** 120 cm

**Net weight:** 92.4 kg

**Gross weight:** 169.399 kg

**GTIN:** 68720689019110

### Service

**Warranty:** 2 years global warranty

### Pallet Layer

**Height:** 24 cm

**Width:** 80 cm

**Length:** 120 cm

### Items included

**Instructions for use:** User manual

**Storage:** Luxury beauty box

**Adapter:** 19.5 V

**Cord:** 2 m

### Application time

**Underarms:** 2 min\*\*\*\*\*

**Bikini line:** 2 min\*\*\*\*\*

**Face areas:** 1,5 min\*\*\*\*\*

**Lower legs:** 11 min\*\*\*\*\*

