

# PHILIPS



Wet & Dry Electric  
Shaver

Shaver 3000 Series

5D Pivot & Flex Heads

PowerCut Blades

Shave wet & dry

Anti-Corrosion Shaving System



S3144/03

## Comfortable, clean shave. Even on sensitive skin With SkinProtect Technology

Philips Shaver 3000 Series Wet & Dry Electric Shaver gives you a comfortable, clean shave, even on sensitive skin. 5D Pivot & Flex Heads, 27 self-sharpening PowerCut Blades, and wet and dry use ensure excellent, reliable results every time.

### Easy to use

- Suitable for head shaving
- 60 minutes of cordless shaving from a 1-hour charge
- Pop-up trimmer for your mustache and sideburns
- One-touch open for easy cleaning
- Anti-slip grip for a secure shave
- 1-level battery indicator to know when it's time to charge
- Convenient charging

### A clean shave

- PowerCut Blades for a consistent, clean shave

### Skin Protect technology

- 5D Pivot & Flex Heads stay close to every angle and curve
- Wet and dry shaving at the sink or in the shower
- Anti-Corrosion Shaving System respects the skin

### Sustainable

## Shaver 3000 Series

Wet & Dry Electric Shaver

S3144/03

# Highlights

### 5D Pivot & Flex Heads



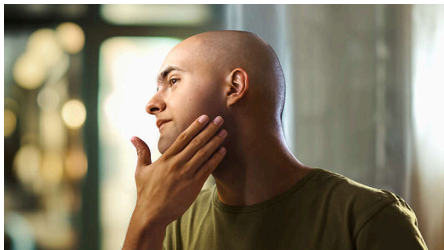
By flexing and pivoting in five directions, the head follows every curve of your face cutting just above skin level for a clean, comfortable shave even on sensitive skin.

### PowerCut Blades



27 self-sharpening blades consistently cut each hair right above skin level for a smooth, even finish, every time. Our self-sharpening blades stay like new for 2 years.

### Suitable for head shaving



The shaver is designed to be a versatile solution that allows you to confidently shave both your face and head

### Wet and dry shaving



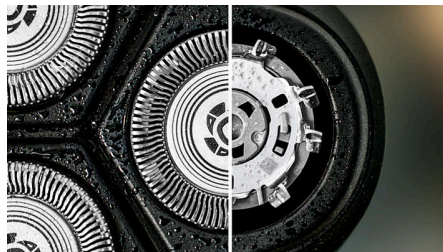
Choose a convenient dry shave, or pair with your favorite foam or gel for a refreshing wet shave, even in the shower.

### 60 minutes of cordless shaving



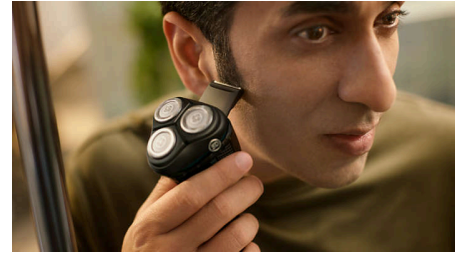
In just an hour, the durable Li-ion battery is fully charged for about 20 shaves. In a hurry? A 5-minute quick charge gives you enough power for one shave.

### Anti-Corrosion Shaving System



Our shaver blades are made from surgical-grade hypoallergenic steel to resist corrosion, prevent impurities, and protect your skin.

### Pop-up trimmer



Refine and define your mustache and sideburns to complete your look with the pop-up trimmer.

### One-touch open



The shaver head flips open at the touch of a button to rinse clean under running water.

### Rubber grip



Never lose your grip. The ergonomic handle with rubber stays secure and comfortable, even when wet.

## Shaver 3000 Series

Wet & Dry Electric Shaver

S3144/03

# Highlights

### 1-level battery indicator



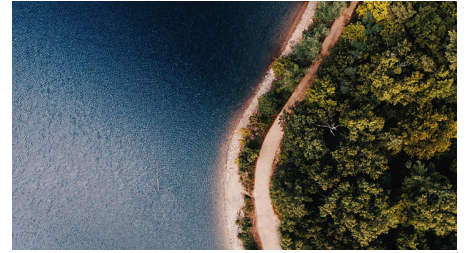
Don't get caught with an empty battery. The battery indicator lets you know if the battery is low, empty, or charging.

### USB-A Charging



At Philips, we drive sustainability in all aspects of product creation. Our ambition is to reduce waste and minimize the number of USB adaptors we put in the market. Should you need an adapter, a suitable supply unit is available via: [www.philips.com/support](http://www.philips.com/support)

### Made with care for the planet



The packaging of this shaver is plastic-free and made out of 90% recycle material, while our blade production facility uses 100% renewable electricity.

# Shaver 3000 Series

Wet & Dry Electric Shaver

S3144/03

## Specifications

### Accessories

**Maintenance:** Protective cap  
**Pop-up trimmer included**

### Power

**Battery type:** Lithium-ion  
**Run time:** 60 min / 20 shaves  
**Charging time:** 1 hour full charge  
**Quick charge:** Yes, 5 minutes

### Design

**Handle:** Non-slip rubber handle  
**Color:** Deep Blue

### Service

**2-year warranty**  
**Replacement head:** Replace every 2 yrs with SH30

### Shaving Performance

**Shaving system:** PowerCut blade system, 27 self-sharpening blades, 55.000 cuts/minute  
**Contour following:** 5D Pivot & Flex Heads

### Ease of use

**Display:** 1-level battery indicator  
**Wet & Dry:** Shave wet or dry  
**Cleaning:** One-touch open, Fully washable  
**Operation:** Cordless use only  
**Waterproof:** Waterproof IPX7, Showerproof

### Skin Protect technology

**Skin Protection:** Anti-Corrosion Shaving System

