

# PHILIPS

## Ultrasound

## Gynecology

# Quick visualization for confident answers

### Enhance clinical confidence in gynecology

Symptoms such as pelvic pain and abnormal bleeding can create anxiety for your patients, and they look to you for fast, confident answers. For ultrasound to be a useful first step, it needs to provide the premium image quality and tools for analysis that can help guide accurate diagnosis and management. Philips ultrasound offers this, along with workflow efficiency from scanning through report generation to help you meet the demands of your day.

### Elevates tissue definition and clarity to new levels

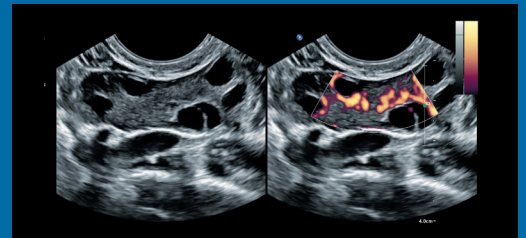
PureWave transducers with xRes Pro offer both enhanced penetration and excellent detail resolution for even the most technically difficult patients.

### C5-1 PureWave transducer (multicenter study results\*)

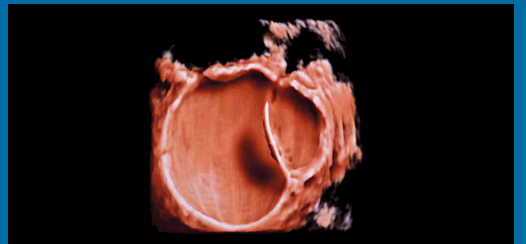
- Sonographers felt that they had to push less in up to 86% of cases
- Marked improvement in color sensitivity in up to 86% of cases
- Exam times were reduced by up to 38%



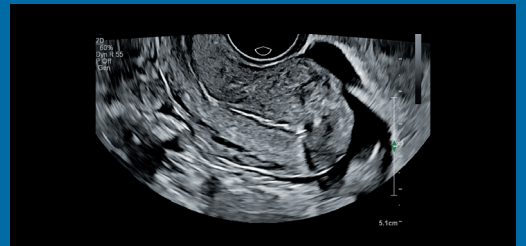
\*A three-site clinical study using the EPIQ ultrasound system compared the C5-1 PureWave transducer to the C9-2 PureWave transducer. Each site conducted 25 abdominal scans on technically difficult patients using both the C5-1 and C9-2 transducers and reported on their findings. Europe: Prof. Michel Claudon, Centre Hospitalier Universitaire Hospital de Brabois, Nancy, France; Prof. Dirk Clevert, Ludwig Maximilians, Universität München, Munich University Hospital, Munich, Germany; Prof. Paul Sidhu, King's College Hospital, London, England. Feb. 2015.



Follicular cysts with the 3D9-3v endovaginal transducer



Simple cyst with septation visualized using 3D TrueVue



Uterus with endometrium and free fluid with the C9-4v endovaginal transducer

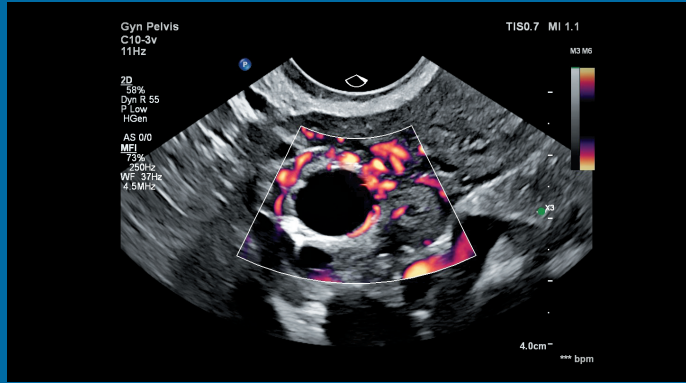


Complex ovarian cyst with the PureWave C10-3v endovaginal transducer

# Challenging is no longer quite so challenging

## Capture remarkable detail in perfusion

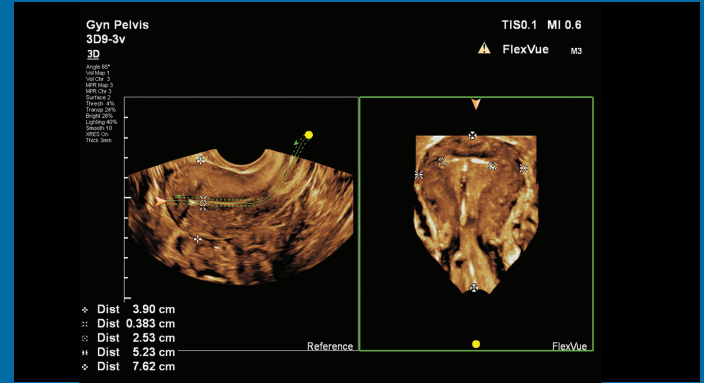
MicroFlow Imaging High Definition (MFI HD) is a proprietary enhancement to Color Power Angio (CPA) mode designed to detect low-volume, low-velocity blood flow found in uterine and ovarian vasculature with high frame rates, high resolution and minimal artifacts.



MFI HD provides low-flow, low-velocity detection of ovarian perfusion

## Visualize 3D volumes with ease

Quickly and easily visualize orthogonal planes of section simultaneously within 3D volumes. FlexVue with Orthogonal View with quantification allows for greater flexibility in plane acquisition from 3D datasets and provides a comprehensive measurement package.



FlexVue with Orthogonal View with quantification produces a complete projected coronal view of the uterus

**85%** of OB/GYN users surveyed feel that MFI HD, with its ultrasensitive blood flow imaging, enhances their diagnostic confidence\*

**95%** of OB/GYN users surveyed feel that FlexVue with Orthogonal View may improve their workflow\*

**85%** of OB/GYN users surveyed feel that FlexVue with Orthogonal View may enhance their diagnostic confidence\*

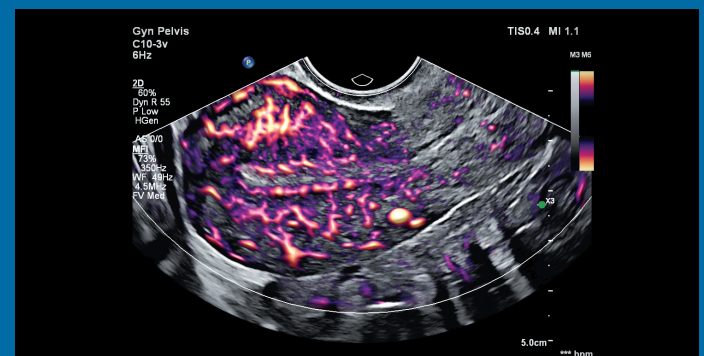
\*Based on a sample size of 20 users.



Quick launch presets touchscreen

## Easily and quickly optimize images during the exam

Quick launch presets offer a 60% decrease in button pushes and 55% decrease in image optimization time during an obstetric exam.<sup>1</sup>



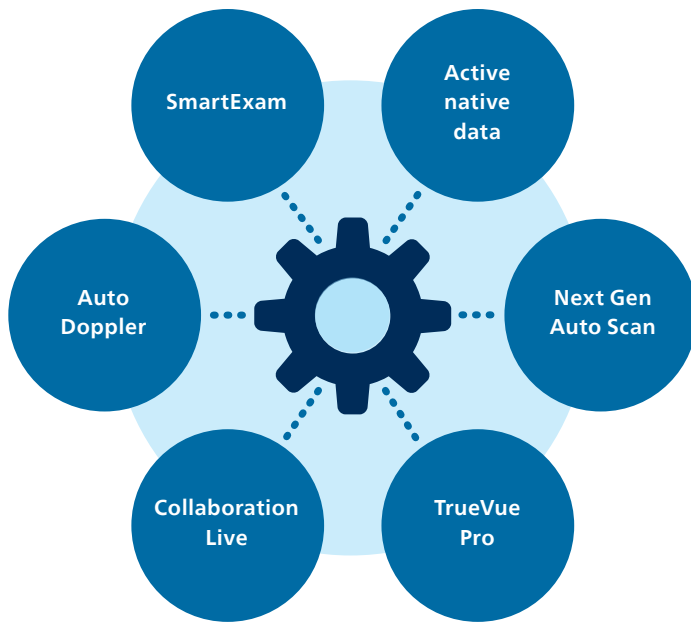
C10-3v uterus with MFI and Flow Viewer applied

## Remarkable dimensionality to color modes

Flow Viewer provides a 3D-like rendering of flow imaging data to better visualize and enhance the aesthetic appeal of all color modes (Color, CPA/CPAd, MFI and MFI HD) for uterus and ovaries.

## Efficient from start to finish

- Tablet-like user interface results in **40% to 80% less reach** and **15% fewer steps**<sup>2</sup>
- High Q Auto Doppler takes ten steps from a conventional exam to three steps and **reduces button pushes by an average of 68%**<sup>3</sup>
- SmartExam protocols **decrease exam time up to 50%** and keystrokes by as many as 300 per exam<sup>4</sup>
- Improved satisfaction for Auto Scan in **100% of cases**<sup>5</sup>



\*As demonstrated using the Philips image quality and image uniformity satisfaction questionnaire.



## Value you can count on

Streamline your workflow and securely connect with patients and colleagues

## Ultrasound Collaboration Live with multi-party\*\*

### Extend your team without expanding it

Offers remote access to help with diagnostic confidence, now with simultaneous multi-party communication. Up to six users can quickly and securely talk, text, screen share and video stream directly from the ultrasound system for access to multiple clinical resources at a distance, allowing for fast time to diagnosis, greater standardization and remote access regardless of location.

Learn more at [www.philips.com/OBGYN](http://www.philips.com/OBGYN)

Contact your Philips account representative.

\*\*Contract required. Requires release 7.0.5 or higher. Diagnostic use and remote access via mobile device or browser requires release 9.0 or higher. Multi-party and system-to-system connect require release 10.0 or higher.





#### References

1. D001833994, Marketing Claim Evidence for release 12.0 Workflow Efficiency Quick Launch Preset.
2. 2013 engineering study comparing EPIQ with Philips iU22 ultrasound system.
3. Auto Doppler Clinical Study, Dec. 2011.
4. University of Colorado, Protocols Study, Apr. 2007.
5. Philips NA, Marketing Claim Evidence for VM10.0 Flow Viewer and MFI HD, March 2023.



© 2025 Koninklijke Philips N.V. All rights are reserved.  
Philips reserves the right to make changes in specifications  
and/or to discontinue any product at any time without notice  
or obligation and will not be liable for any consequences  
resulting from the use of this publication.

[www.philips.com/OBGYN](http://www.philips.com/OBGYN)

Printed in the Netherlands.  
00000716-00-01 \* MAR 2025