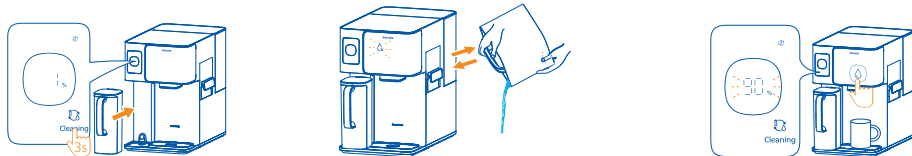


First time flushing / New filter flushing

1. Fill the tank with tap water up to the "Max" line. Place the filtered water jug in position. Plug in the machine, and press and hold the "Cleaning" button for 3 seconds. When you hear a beep, the machine will start flushing.
2. When the progress percentage flashes, empty the filtered water jug and put it back. When "△" flashes, empty the tap water tank, refill it with tap water up to the "Max" line, and put it back.
3. When the progress shows "90%" and flashes, no need to empty the filtered water jug. Place a container with volume at least 2 liters under the water outlet. Press "△". When it shows "100%", the flushing process is complete.



Ice Cube production control panel

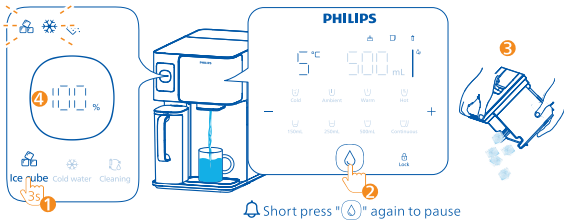
Start ice cube and chilled water production:

- ① Press and hold "Ice cube" for 3 seconds
- ② Wait until "Ice cube" turns from flashing to constant white
- ③ "%" indicates the preparation progress of each batch of ice cubes.

Status	Meaning
Flashing light	Ice cube making cycle in progress.
Constant light	Ice box is at full capacity. Ice cube making cycle completed
Flashing light	Water chilling process in progress
Constant light	Water in chilled water tank has reached 5°C. Chilling function paused.

Stop ice cubes and chilled water production, and empty the ice cube container and chilled water tank:

- ① Press and hold "Ice cube" for 3 seconds
- ② Place a large capacity container at the water outlet, while the "Ice cube" and "Snowflake" light is flashing, short press "△" to discharge water
- ③ Wait until the emptying progress reaches 100%
- ④ While emptying the water tank, take out the ice box and pour out the ice cubes



Chilled Water production control panel

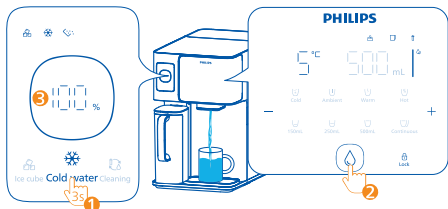
Start chilled water production (without ice cubes production):

- ① Press and hold "Cold water" for 3 seconds
- ② Wait until "Snowflake" turns from flashing to constant white

Status	Meaning
Light off	Chilled water making function is not activated
Flashing light	Chilled water making in process
Constant light	Water in chilled water tank has reached 5°C. Chilling function paused.

Stop chilled water production, and empty the chilled water tank:

- ① Press and hold "Cold water" for 3 seconds
- ② Place a large capacity container at the water outlet, while "△" light is flashing, short press "△" to discharge water
- ③ Wait until the emptying progress reaches 100%



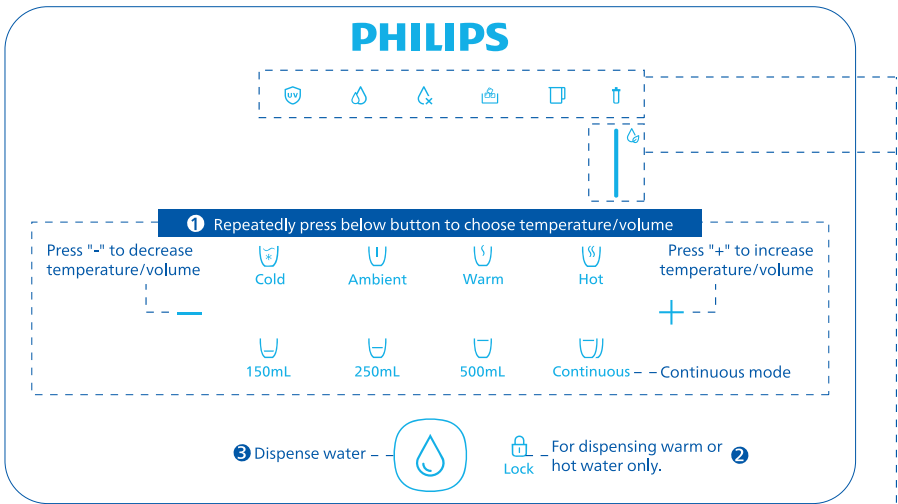
PHILIPS













ADD6922

How to use
使用指南

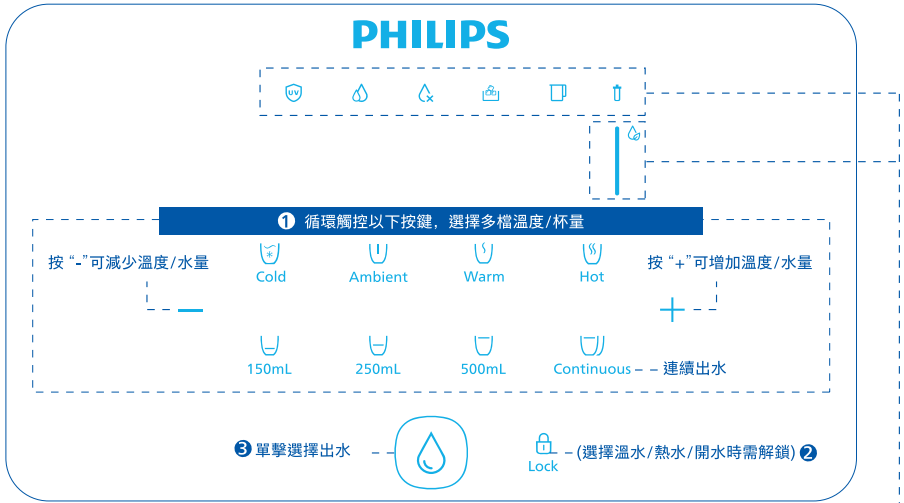


Water Filtration and Water Dispensing control panel



Status	Meaning	
   	Constant white light	UV sterilization in process.
	Constant white light	Filtration in process
	Flashing white light	The filtration process is on going, so there isn't enough water in the filtered jug to be taken from the water outlet yet.
	Flashing white light	The tap water in the tap water tank has not been replaced for a long time.
	Flashing red light	The tap water in the tap water tank is at a low level or the water quality is poor, please empty the remaining water in the tank and refill it with fresh tap water
* The remaining water in the tap water tank will be a mixture of RO drain water and fresh tap water. The tap water tank should always be fully emptied before refilling it with fresh tap water.		
   	Constant white light	Ice box is in place.
	Flashing white light	Ice box is not in place. Please put it back in time after taking out the ice
	Constant white light	Filtered water jug is in place.
	Flashing white light	Filtered water jug is not in place. Please put it back before dispensing water.
	Flashing red light	The water quality is in low level and recommended to discard the water in the filtered water jug and filtered it again
   	Constant white light	Filter is within its lifespan, feel free to use.
	Flashing red light	The filter lifespan has almost expired. It is necessary to promptly purchase a replacement filter.
	Red light on	The filter lifespan has expired. It is crucial to replace the filter promptly.
	White light	The water quality is good and safe to drink
	Yellow light	Recommended to discard the water in the filtered water jug and run the filtration process again

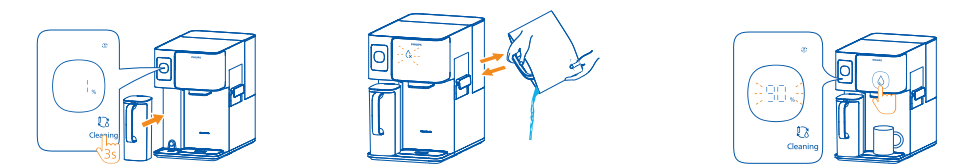
即飲功能操作



狀態燈	狀態說明
	亮白燈 正在殺菌
	亮白燈 正在濾水
	閃白燈 正在濾水，純淨水壺水量不足，暫無法取水
	閃白燈 原水箱長時間未換水，建議更換
	閃紅燈 原水箱缺水或水質狀況差，請將原水箱剩餘的水倒掉，再重新加水
	* 當 提示換水時，原水箱內剩餘的水是過濾後的廢水或水質較差，請務必倒掉再添加自來水，以保護濾芯，保證淨水效果
	亮燈 冰盒已放好
	閃燈 冰盒未放好，取冰塊後請放回
	亮白燈 純淨水壺已放好
	閃白燈 純淨水壺未放好，請放回
	閃紅燈 水質較差，建議將濾水壺中的水倒掉，再重新過濾
	亮白燈 濾芯壽命期內，請放心使用
	閃紅燈 濾芯壽命即將到期，需及時購買濾芯
	亮紅燈 濾芯壽命已到期，需及時更換濾芯
	亮白燈 水質優良，可放心飲用
	亮黃燈 水質一般，建議把純淨水壺的水倒掉，並重新過濾

產品首次沖洗 / 新濾芯沖洗

1. 原水箱加入自來水至“Max”線並放回，接通電源，安裝好純淨水壺，長按“ Cleaning”鍵3秒，聽到「嘀」提示音，開始進入沖洗程序。
2. 當進度百分比閃爍時，將純淨水壺的水倒掉再放回。當“ ”閃爍時，將原水箱的水倒掉，重新加入自來水至“Max”線再放回。
3. 當進度達到“90%”閃爍時，無需倒水。放置一個超過2公升容量的容器到出水口，“ ”出水。當顯示面板顯示100%時，表示沖洗過程完成。



使用製冰功能

開啟製冰功能
產品會同時製冰和冰水

- ① 長按“ ”3秒
- ② 等待“ ”和“ ”由閃爍變長亮

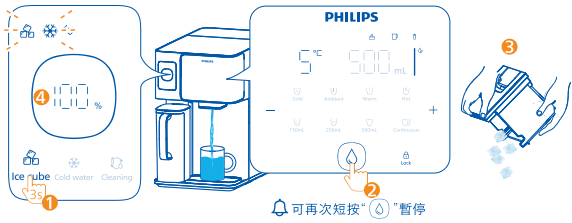
“%”表示每批冰塊的製作進度

狀態燈	狀態說明
	閃爍變常亮 冰盒已滿，冰塊製作完成
	閃爍變常亮 冰水已達至5℃，冰水製作完成

關閉製冰功能
產品會同時關閉製冰和冰水功能

- ① 長按“ ”3秒
- ② 出水口處放一個大容量杯，在“ ”和“ ”燈同時閃爍時，短按“ ”開始排空出水
- ③ 等待排空進度至100%
- ④ 排空出水期間，取出冰盒，將冰塊倒掉

可再次短按“ ”暫停



使用冰水功能

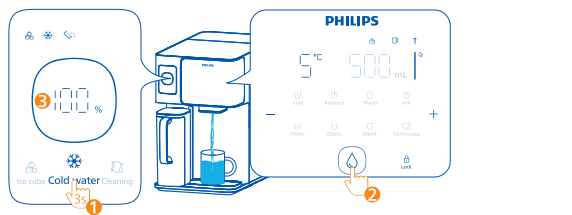
開啟冰水功能
產品僅製作冰水，不會製冰

- ① 長按“ ”3秒
- ② 等待“ ”由閃爍變長亮

狀態燈	狀態說明
	燈滅 未開啟冰水功能
	閃爍 正在製作冰水
	常亮 冰水製作完成

關閉冰水功能

- ① 長按“ ”3秒
- ② “ ”閃爍，在出水口處放一個大容量杯，短按“ ”開始排空出水
- ③ 等待排空進度至100%



© 2025 AquaShield
All rights reserved.
Philips and the Philips Shield Emblem are registered trademarks of Koninklijke Philips N.V. and are used under license.
This product has been manufactured by and is sold under the responsibility of Hong Kong AquaShield Health Technology Company Limited and Hong Kong AquaShield Health Technology Company Limited is the warrantor in relation to this product.
Rev 8 MAR 25

技术要求：

- 1、材质：150g双面铜版纸；
- 2、彩色印刷（备注CMYK）；双面印刷
- 3、尺寸：145*210mm(折叠后尺寸)；(虚线为折线)
- 4、表面覆哑膜；
- 5、产品无脏污、翹边翹角及破损现象；
- 6、产品需符合RoHS相关法律要求。

C0 M100 Y0 K2

C100 M71 Y0 K2

C0 M54 Y100 K1