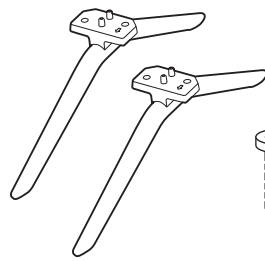
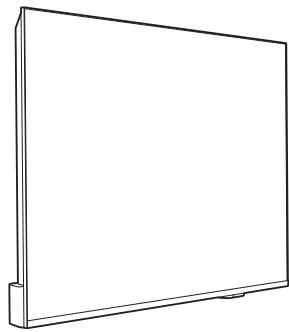
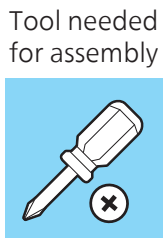


PHILIPS

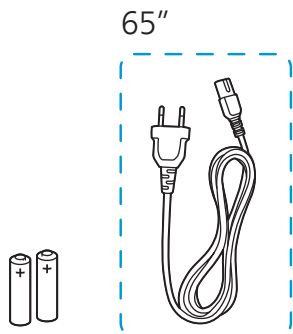
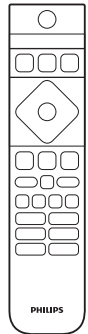
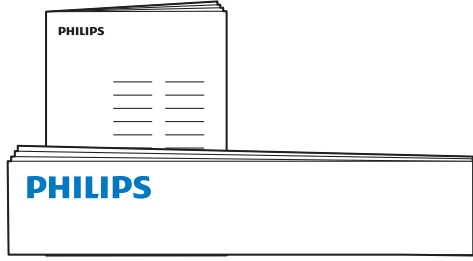
Television

Quick Start Guide

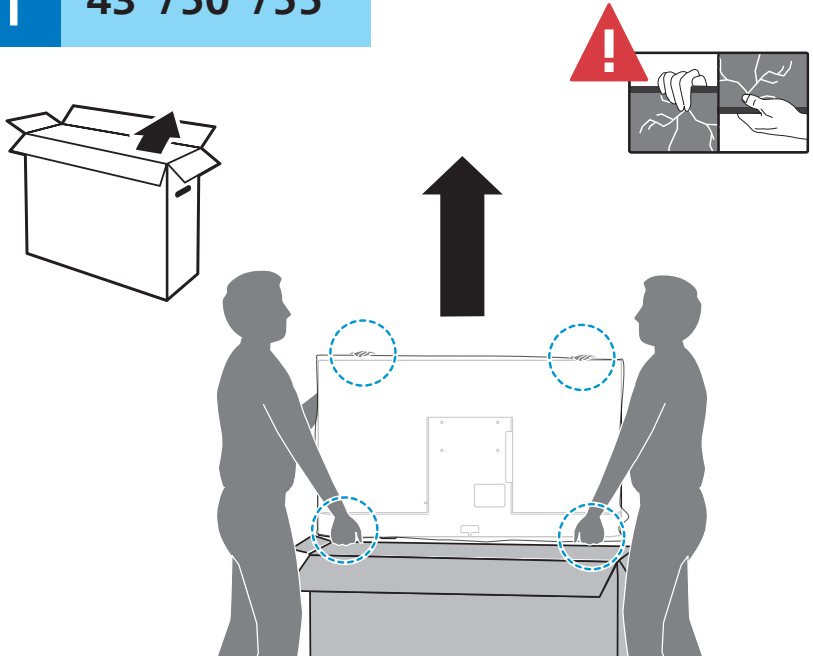
8050 Series



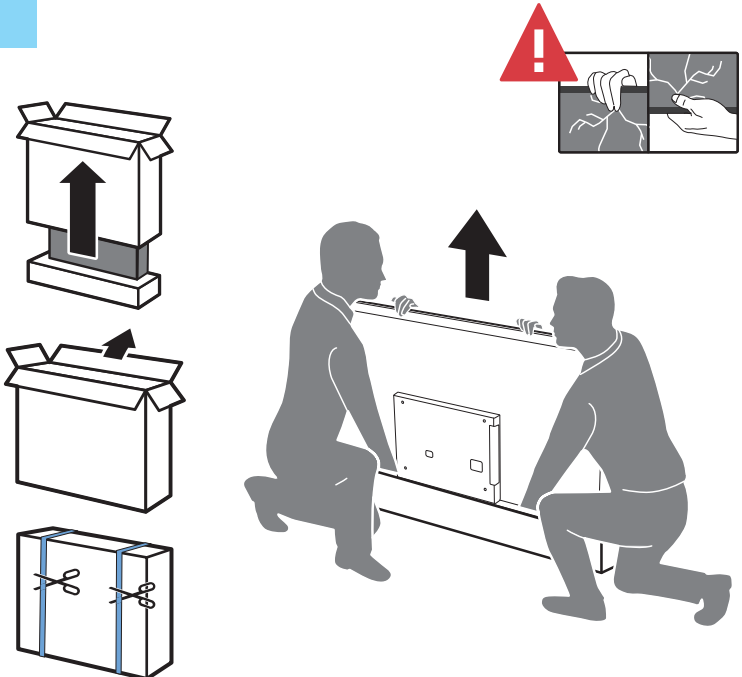
43" (Q4xL18) : x4
50" / 55" (Q4xL18) : x4
65" (M4xL20) : x4



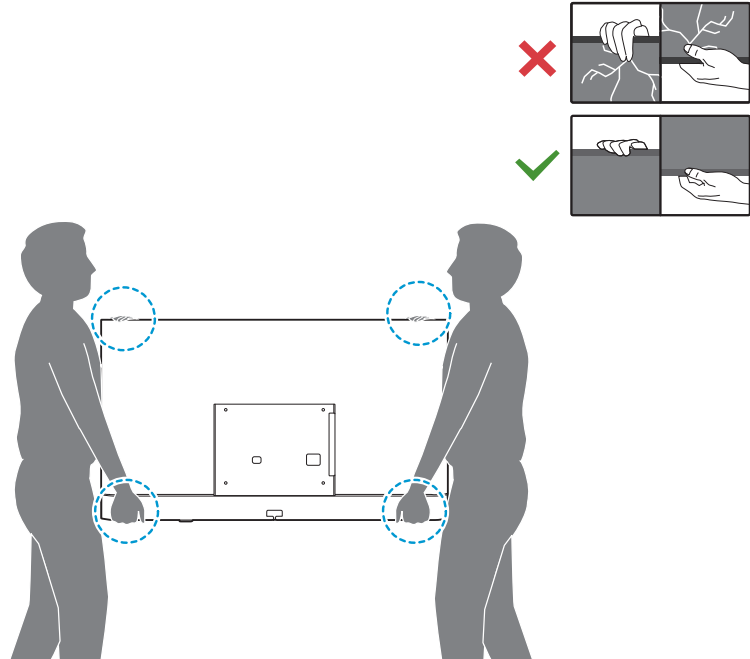
1 43" / 50" / 55"



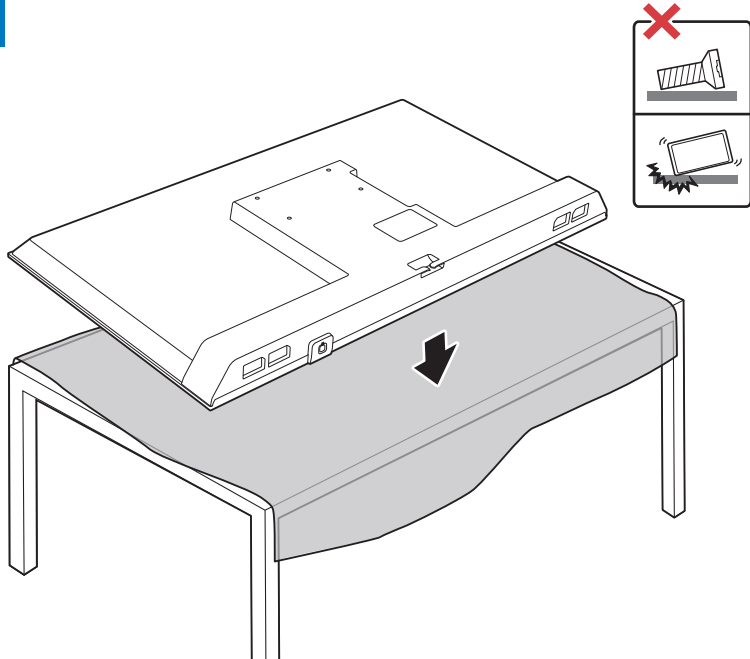
65"



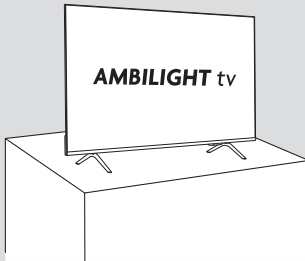
2



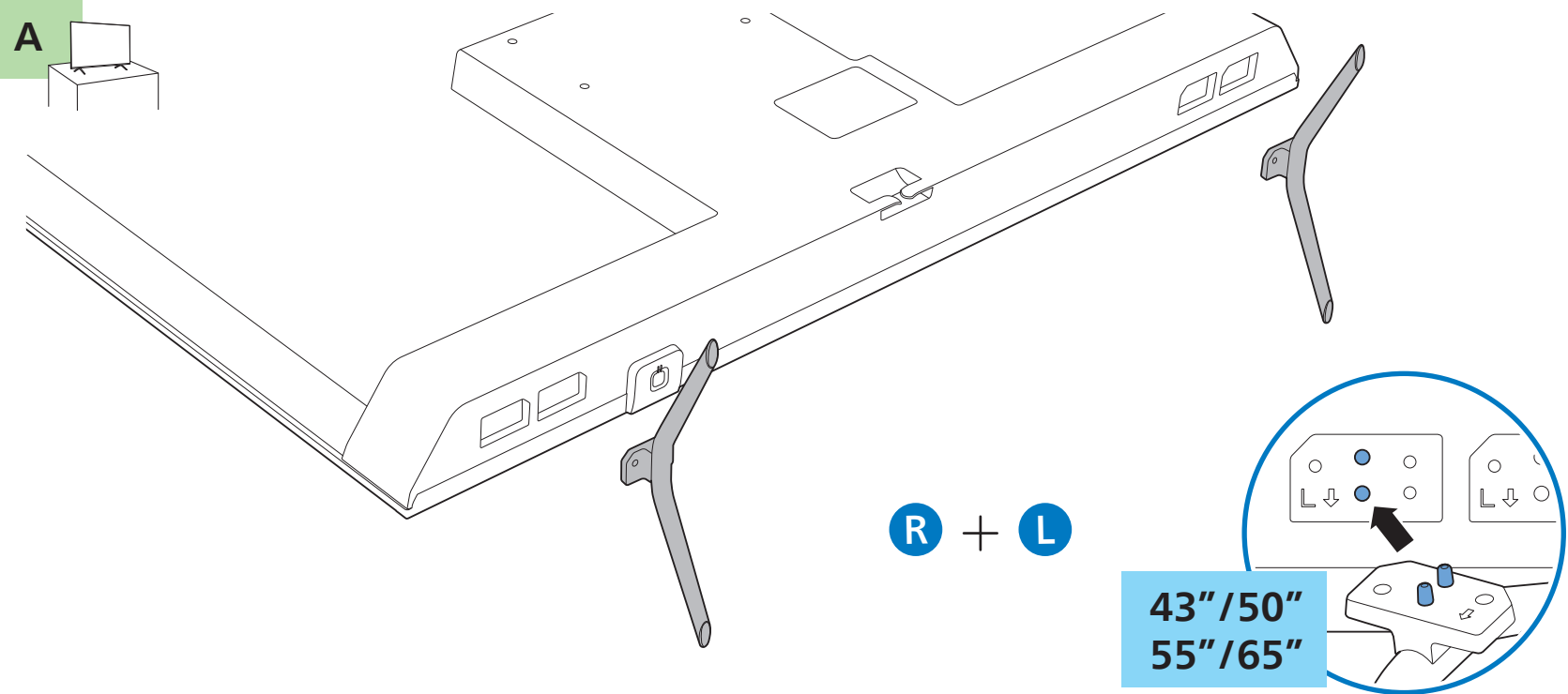
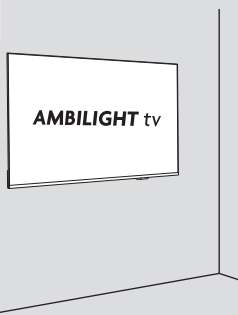
3



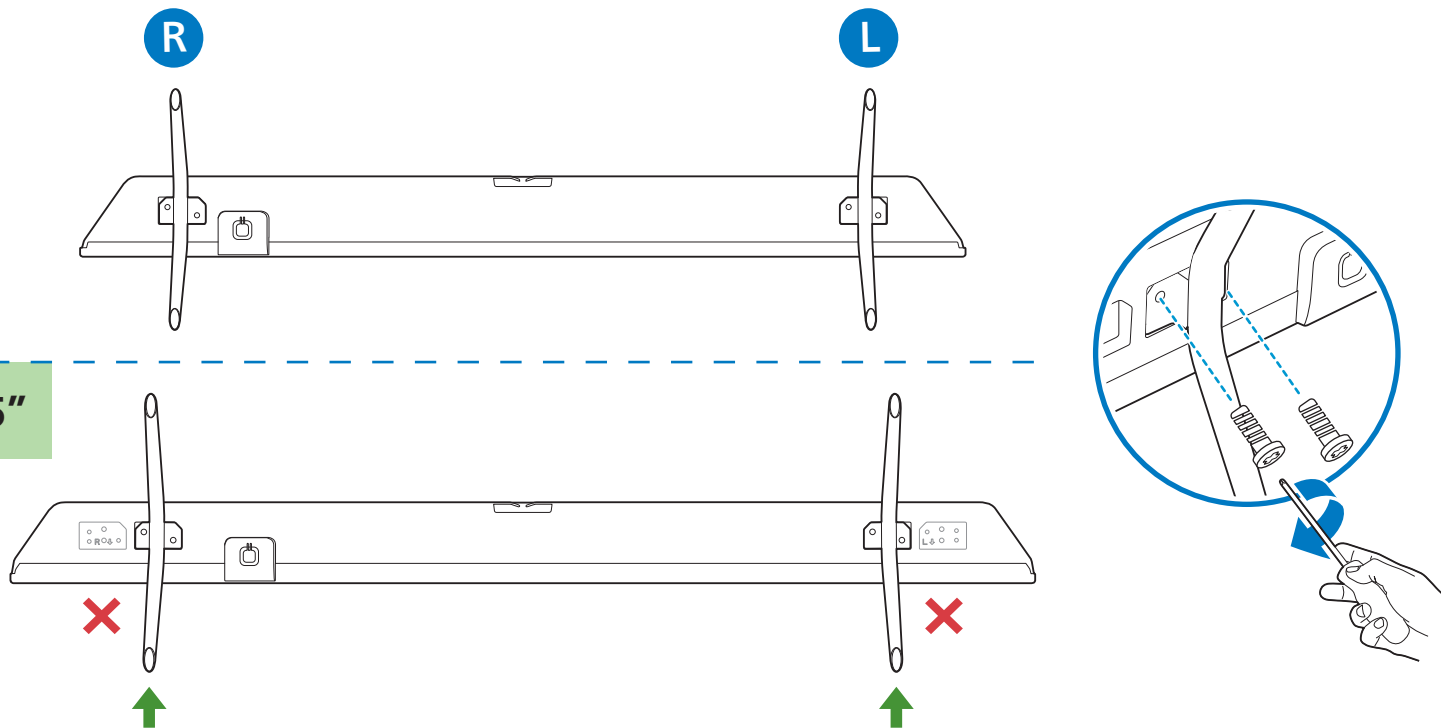
A Desk Placement



B Wall Placement

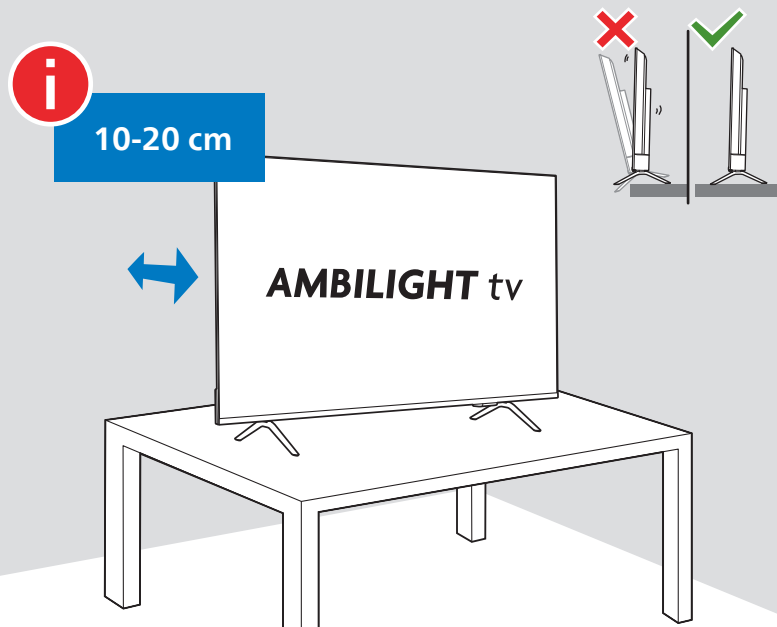


43"



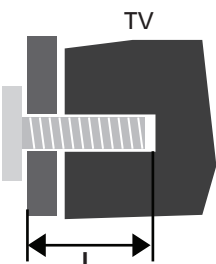
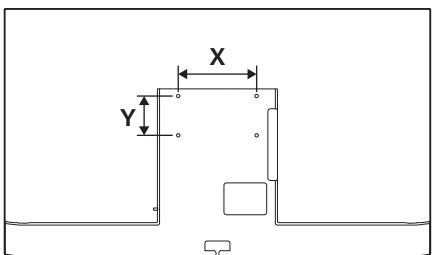
50" / 55" / 65"

Desk Placement (using table stand)

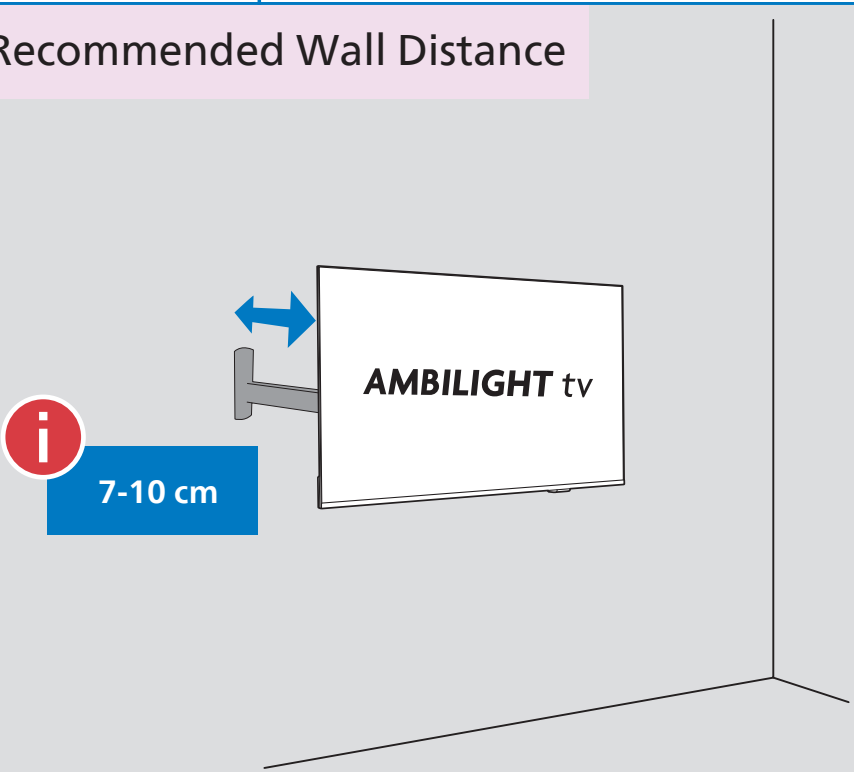


B

Diagonal (inch/cm)	X (mm)	Y (mm)	Screw Size	Screw Length (mm)
43" / 108	200	100	M6	9-10
50" / 126	200	100	M6	9-10
55" / 139	200	100	M6	9-10
65" / 164	400	300	M8	12-22



Recommended Wall Distance



4

Get Connected



www.philips.to/smartTV

The Philips Smart TV app lets you switch channels and adjust the volume - just like a remote control.

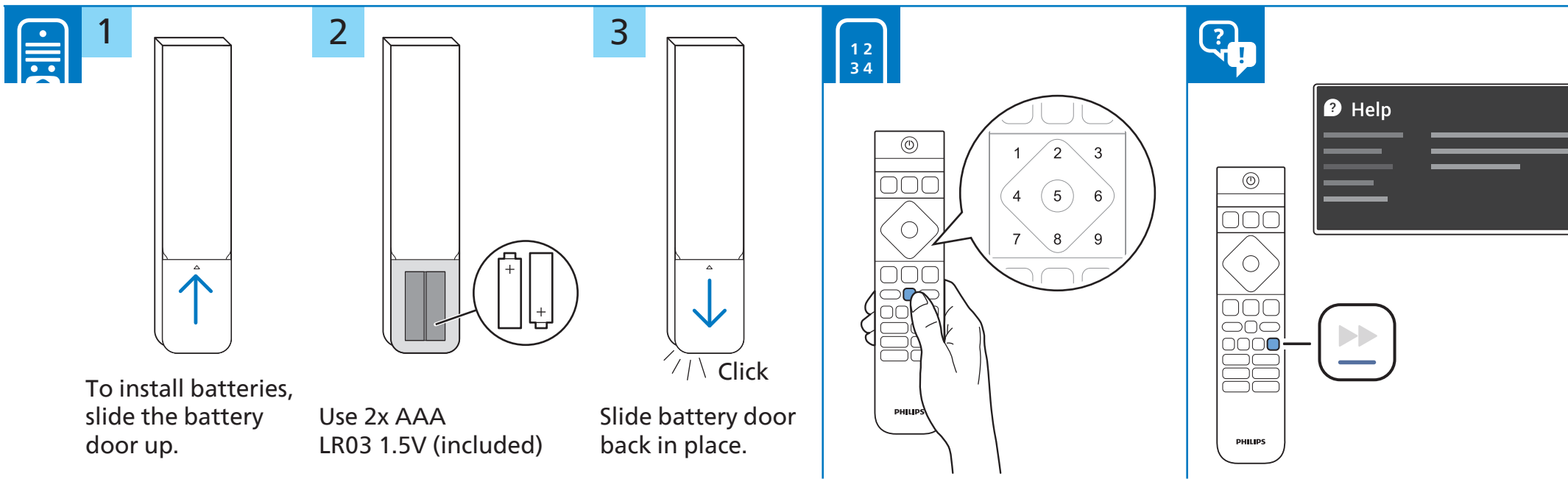
5

Register and Support



www.philips.com/TVsupport

Register your TV, find out more, download the user manual and get support

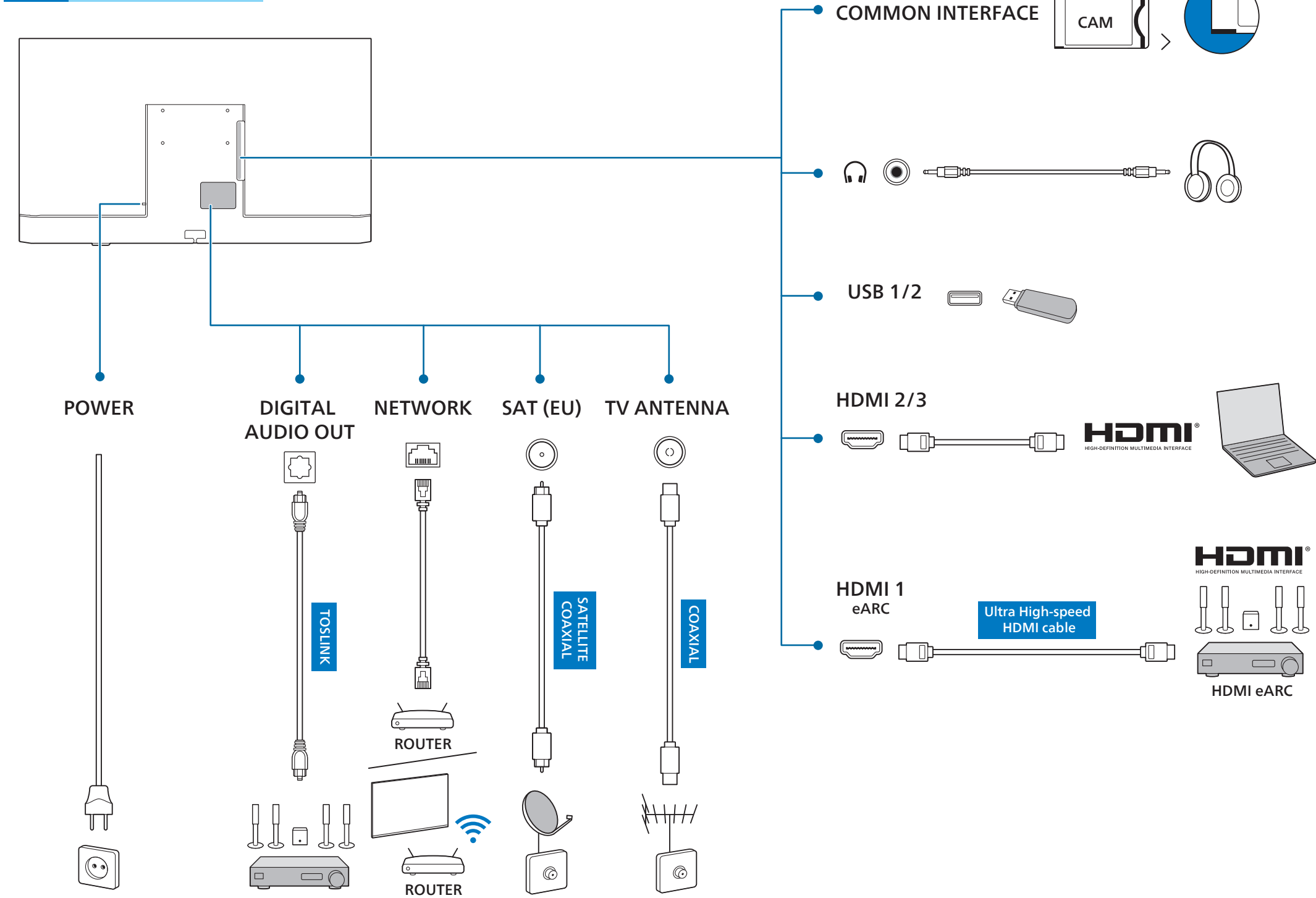


English
Türkçe

Read the safety instructions.
Güvenlik talimatlarını okuyun.



43"/50"/55"



65"

