

PHILIPS

Ultrasound

Compact 5000 Series



Compact without compromise

Philips Compact Ultrasound System 5000 Series for general imaging

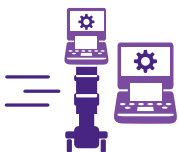


Powerful imaging in a compact design

Some compact ultrasound systems have capabilities as small as their size. Philips Compact 5000 Series for general imaging is different. It's compact without compromise.

Quickly reach the answers you need

Compact 5000 Series includes many of the advances of Philips premium ultrasound systems in a compact design with proven workflow suitable for bedside diagnosis across all hospital departments.



Portability

Bring advanced scanning capabilities to the bedside with a compact system that has shared architecture with Philips premium ultrasound systems.



Performance

Enhance your ability to reach a definitive diagnosis with Philips advanced ultrasound capabilities, imaging algorithms and cutting-edge technologies such as PureWave and xMatrix transducers for exceptional image quality.



Proven workflow

Capitalize on the shared architecture of Philips EPIQ and Affiniti ultrasound systems for the opportunity to scan more patients, more quickly. Familiar user interfaces, touchscreens, features and workflow offer high productivity with premium-level clarity.

Bring care where needed

Designed to be robust and reliable, count on your system day after day for the durability needed to help you deliver superb care no matter the setting. This high-quality portable ultrasound system offers image quality comparable to Philips premium cart-based systems.

Compact 5000 Series is compact without compromise



Experience exceptional image quality through PureWave and xMatrix transducers and a full range of 3D/4D scanning and reproducible quantification.

Quickly boot up from transport mode and scan for up to 2 hours with extended batteries.



Scan comfortably with favorable system ergonomics, including the 10" touchscreen with adjustable viewing angle.

Support your infection-control practices with a sealed control panel that is responsive to a gloved touch and is compatible with a range of disinfectants and cleaning solutions.[†]



Tap into wider expertise directly from the ultrasound system using Collaboration Live with multi-party* tele-ultrasound for access to other team members for consultation and training.

Easily get your data where it needs to go with DICOM structured reporting.



Simplify service and maintenance with a modular system with familiar architecture and transducers.

Choose a flexible configuration of laptop with cart and/or travel case.[‡]



Compact 5000 Series features award-winning mobility.



* Contract required. Diagnostic use, remote access via mobile device or browser, multi-party feature and system-to-system connect require release 2.0 or higher. Not intended to be used with QApps.

[†] <https://www.philips.com.au/healthcare/resources/feature-detail/ultrasound-care-and-cleaning>.

[‡] Travel cases sold separately.

See more, more clearly

Access instant insights

Philips imaging algorithms and PureWave and xMatrix transducers deliver exceptional clarity—from deep abdominal views to cardiac, obstetrical and gynecological (OB/GYN), and pediatric imaging—even in complex cases.

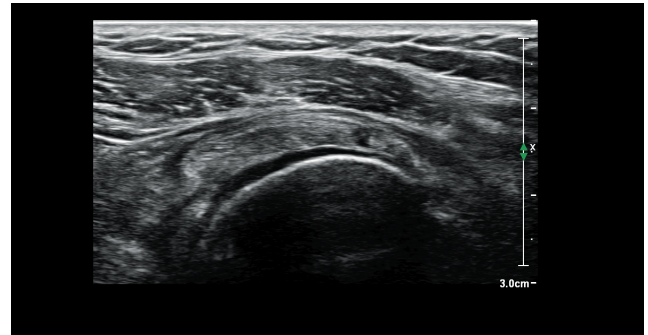
Complete multispecialty and advanced imaging

Image confidently with routine and advanced capabilities such as 2D/3D/4D imaging, CEUS, strain elastography, MicroFlow Imaging and needle visualization across all general imaging, cardiac and OB/GYN applications.

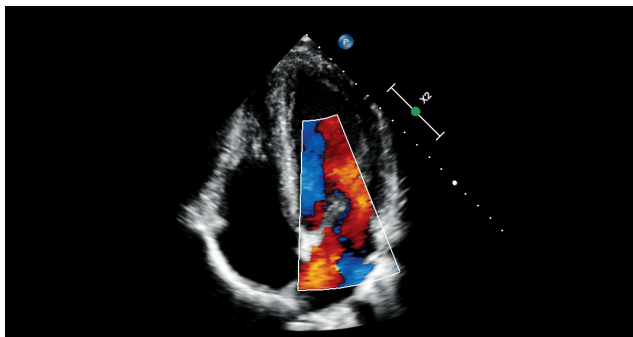
Enhance diagnostic confidence through premium ultrasound image quality across transducers



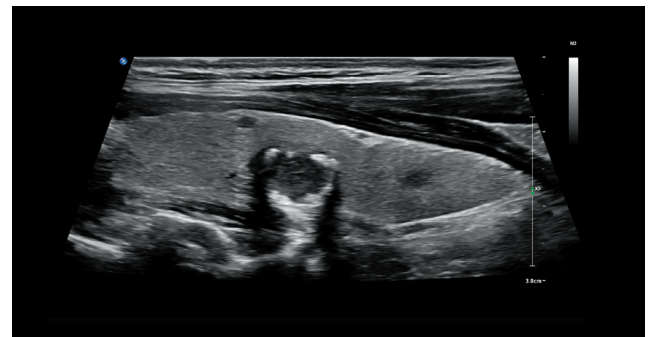
Longitudinal liver with inferior vena cava, hepatic veins and abdominal aorta



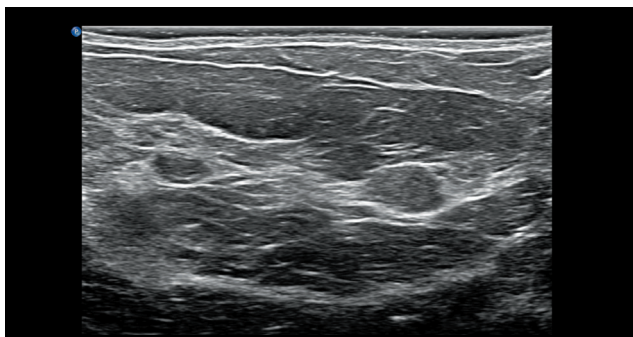
Abnormal supraspinatus tendon with small partial thickness tears



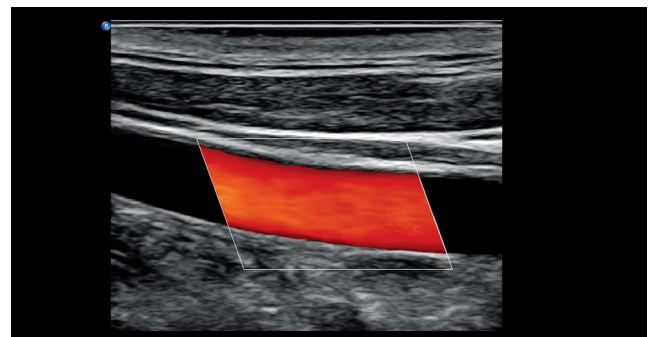
Cardiac apical four chamber view with mitral inflow



Longitudinal thyroid lobe with nodule



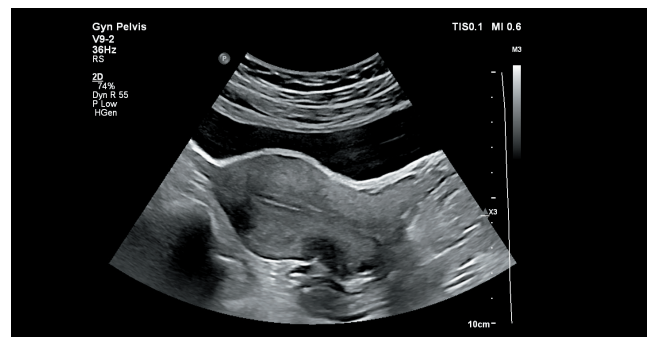
Breast tissue with multiple fibroadenomas



Longitudinal common carotid artery



Fetal profile shown using the V9-2 transducer



2D image of uterus using V9-2 transducer

Exceptional capabilities for fast, efficient visualization

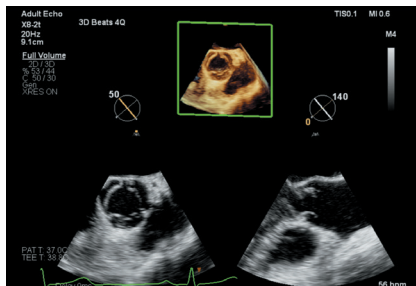
Advanced transducer technology and AI-based solutions support consistency and high-quality results across exams and patient types.



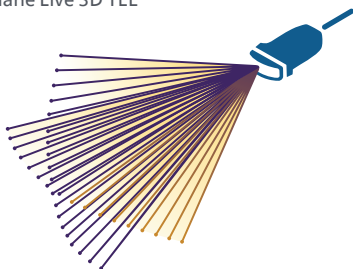
Detect slow and weak blood flow anatomy in tissue by using MicroFlow Imaging (MFI)

A survey of users showed that **83% of users** felt that MFI enhanced their visualization of organ perfusion and **95% of users** agreed that MFI enhanced their diagnostic confidence.¹

At left: Thyroid shown with MFI using eL18-4 transducer



xPlane Live 3D TEE



Live xPlane Imaging

Capture more complete views to inform your decisions

Create two full-resolution imaging planes simultaneously with Live xPlane Imaging, allowing you to capture twice as much clinical information in the same amount of time as conventional 2D imaging.

Results of case studies are not predictive of results in other cases. Results in other cases may vary.

* Compared to the same measurements performed manually.

† Compared to CX50.

Auto Scan (iSCAN) automatically and continuously optimizes gain and time gain compensation (TGC)

Consistent results and **~50% time-savings** using **AI-empowered Auto Measure** for routine cardiac 2D and Doppler measurements*¹

100% increase in volume frame rates with **Live 3D TEE imaging**^{†1}

PureWave V9-2

The PureWave V9-2 is a one-solution transducer for first-, second- and third-trimester applications, as well as pelvic floor exams.



Familiarity streamlines how you are able to work

Leverage the shared architecture of Philips EPIQ and Affiniti ultrasound systems for the opportunity to scan more patients, more quickly with proven workflow. Familiar user interfaces, touchscreens, features, workflow and remote service and updates support high productivity with the premium-level clarity you expect from Philips.



90% of users agree that the common UI and workflow shared with EPIQ and Affiniti **may help reduce user training.**¹

Now your ultrasound system can do more than scan



Recent studies determined that the use of Collaboration Live **reduced exam time by 57%.¹**

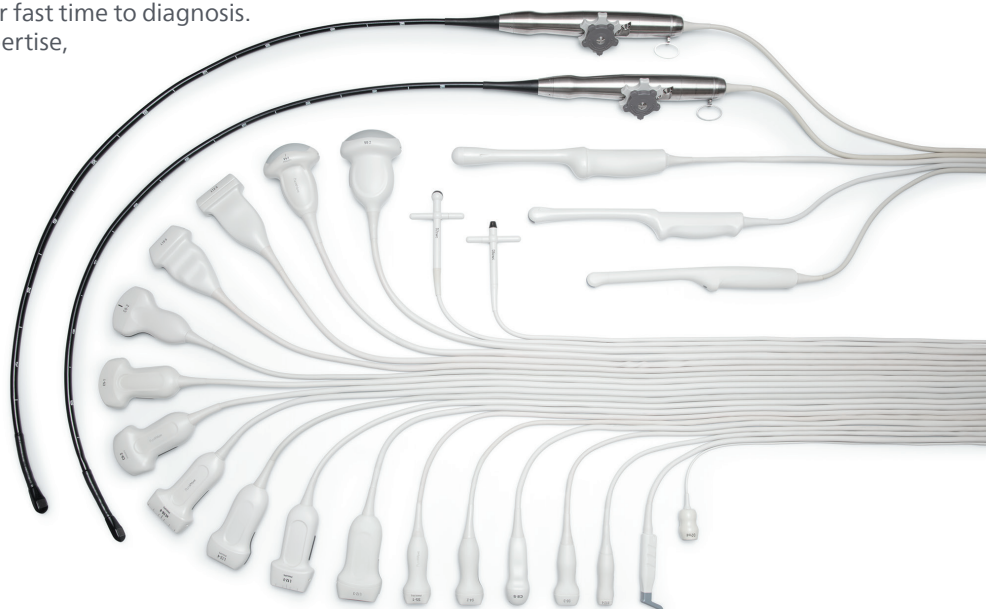


100% of patients felt that they had **better access to healthcare** through telemedicine delivered with Collaboration Live.²

Tap into wider expertise directly from the ultrasound system using Collaboration Live with multi-party* tele-ultrasound for access to other team members for decision support and training.

Up to six users can quickly and securely talk, text, screen share and video stream directly from the ultrasound system for access to multiple clinical resources at a distance, allowing for fast time to diagnosis. Give patients access to your team's full expertise, regardless of location.

Share transducers across Philips EPIQ, Affiniti and Compact 5000 Series systems to make the most of your ultrasound investment.

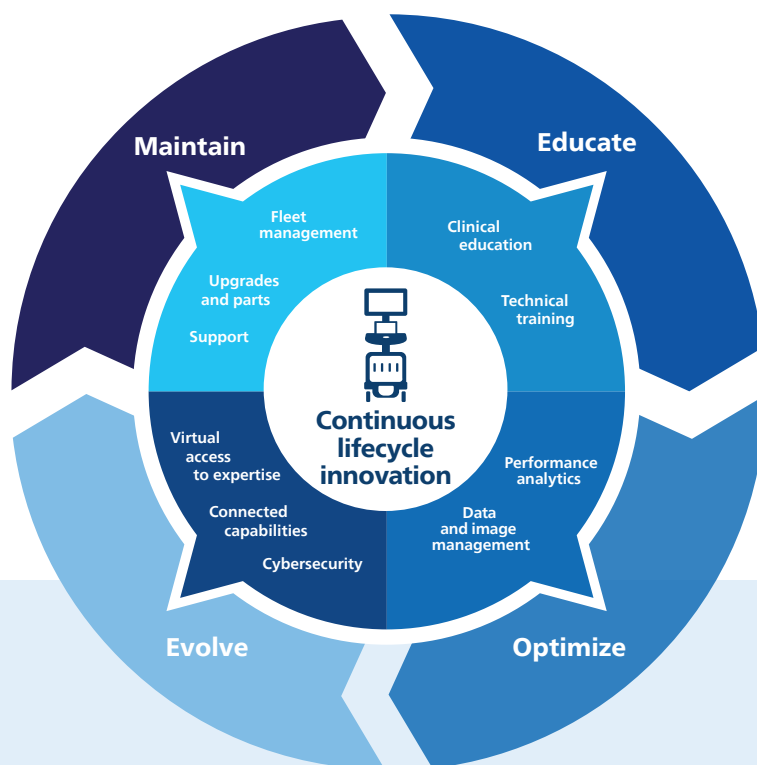


Results of case studies are not predictive of results in other cases. Results in other cases may vary.

*Contract required. Diagnostic use, remote access via mobile device or browser, multi-party feature and system-to-system connect require release 2.0 or higher. Not intended to be used with QApps.

Trusted partner now and in the future

Meet today's imaging challenges and accommodate tomorrow's innovations. The system is built on 30 years of ultrasound technology and 130 years of Philips experience in high-quality medical imaging. It leverages proven Philips expertise in general imaging, cardiovascular imaging, women's health and more – all to help you treat your patients with confidence.



Helping you make the most of every day

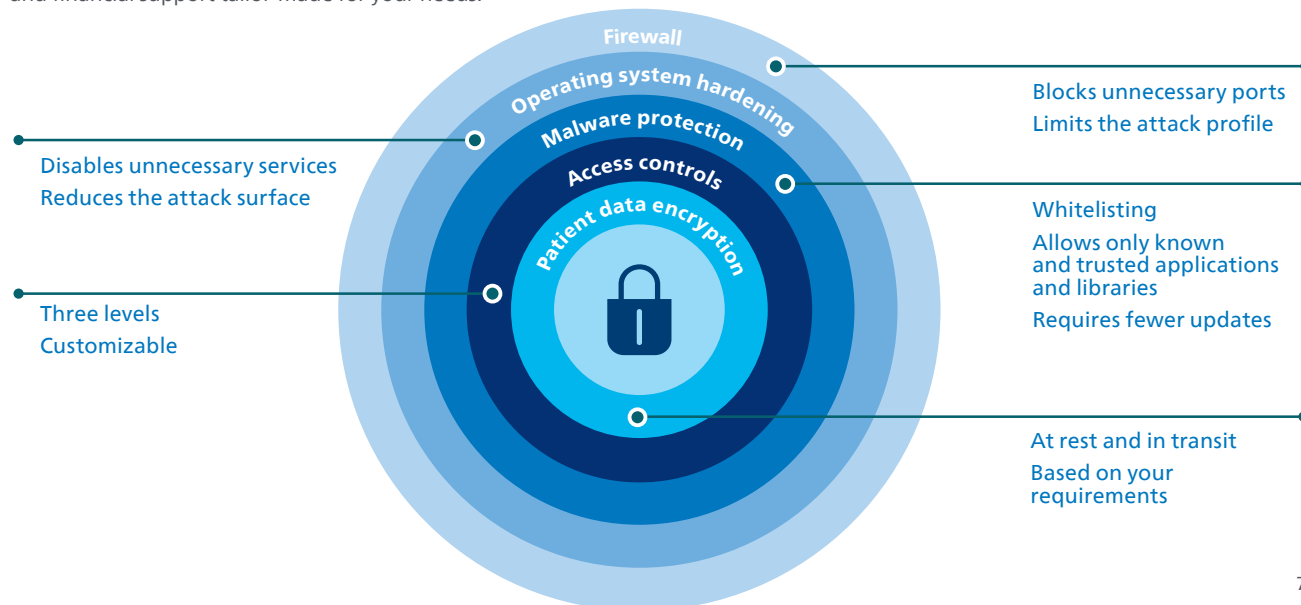
Philips Ultrasound Services are there for you throughout your imaging system's lifetime, from planning to replacement, helping you get the most value from your ultrasound investment.

>270,000 ultrasound systems installed and supported worldwide by Philips service



Protecting your systems and your productivity

An expert partner is key for fast, confident and proactive responses to resolve equipment downtime. Look for a partner who will share the risk and offers flexible service agreements alongside education and financial support tailor-made for your needs.





References

Results of case studies are not predictive of results in other cases. Results in other cases may vary.

1. Philips supportive claim evidence documented internally.
2. Ruma MS, et al. Prospective study of 30 subjects undergoing routine obstetric ultrasound imaging, New Mexico, USA. The use of a novel telemedicine tool in perinatology [abstract]. 30th ISUOG World Congress, 2020.