

PHILIPS



Full HD TV

LED

80 cm (32")

Ambilight

Pixel Plus HD

HDR 10



32PFS6900

Keep it compact

Compact screen. Smart budget. Picture and sound quality that thinks big. With Ambilight that goes beyond the screen and all the Smart TV content you love to watch in full HD, enjoy a more immersive viewing experience at home or on the go.

Small, smart, easy

- Titan OS. Find it easily.
- Connect seamlessly to smart home networks

Forward thinking design

- European values in design
- Add clarity to each word with Vocal Boost

Vivid viewing, crisper sound

- Colour and contrast with HDR10 and HLG
- Dolby Audio for crisp, clear sound
- Sharpness and detail with Pixel Plus Full HD

Great value. Great performance

- Small, smart, compact design
- There's TV. And there's Ambilight TV

LED

Full HD TV

32PFS6900/05

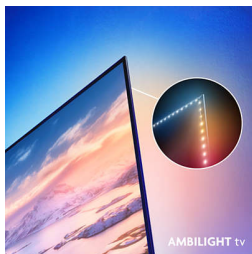
Highlights

Compact design



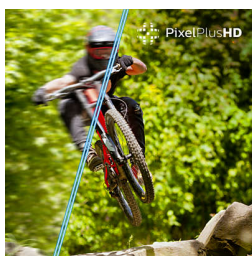
Size matters. With its elegant stand and tight dimensions, this 32" smart TV is the perfect fit for the smaller space. With its carefully considered design it's a TV that blends in beautifully at home, or on the go.

Ambilight



With integrated LED lights that react to each scene, Ambilight immerses you in a halo of colourful light. Movies, sports, music videos and gaming expand beyond the screen to draw you deeper into the moment. Once experienced, you'll never want another TV without it.

Pixel Plus Full HD



Pixel Plus picture sharpness. Defined detailing for the smaller screen. With full high definition and unbelievable vibrance, this compact LED TV shows how every little detail counts.

HDR10/HLG



Brighter colours. Vivid tones. From the darkest scenes to the brightest light, clarity is everything. This is where high dynamic range impresses with clearer colour and contrast.

Dolby Audio



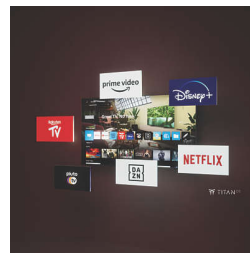
Listen. Hear each moment. This is crystal clear Dolby Audio. From dialogue to dance and from action movie moments to stunning nature scenes, you can experience clearer sound as you go.

Matter Smart Home compatible



Matter Smart Home compatibility means you can control your TV via Matter Smart Home app or voice control your TV via Alexa-enabled devices or via your Google smart speakers. This way, your voice can find movies, shows, receive recommendations and so much more.

Philips Smart TV Titan OS



The Philips Smart TV Titan OS platform brings what you love to watch, and fast. From sequels to series and documentaries to drama, everything you want is there at the touch of a button. Whatever you're looking to watch, keep all the best streaming apps easily within your reach.

European design

Finding a design that fits in perfectly with your needs can mean everything. Borderless frame. Defined stand. European know-how. This is where design, picture and sound really come together as the smarter choice.

Vocal Boost

Hear each word clearly. Vocal Boost enables the listener to turn the dialogue volume up or down without any effect on the background sound. You won't miss a single moment now that each spoken sentence comes across with greater clarity.



AMBILIGHT tv



HDR10

Dolby Audio



TITANOS

IntelliSound

LED

Full HD TV

32PFS6900/05

Specifications

Ambilight

Ambilight Features: Gaming mode, Wall colour adaptive, Ambilight Music, Lounge light mode, Ambilight FTI Animation, Sunrise Alarm, AmbiSleep
Ambilight Version: 3 sided

Picture/Display

Diagonal screen size (inch): 32 inch
Diagonal screen size (metric): 80 cm
Display: LED Full HD
Panel resolution: 1920 x 1080
Native refresh rate: 60 Hz
Picture engine: Pixel Plus HD
Picture enhancement: Crystal Clear, ECO, Game, Movie, Monitor, Home Cinema, Personal, Super Resolution

Display input resolution

Resolution-Refresh rate: 576p - 50 Hz, 640 x 480 - 60 Hz, 720p - 50 Hz/60 Hz, 1366 x 768 - 60 Hz, 1920 x 1080p - 24/25/30/50/60 Hz

Tuner/Reception/Transmission

Digital TV: DVB-T/T2/T2-HD/C/S/S2
Signal strength indication
Teletext: 1000 page Hypertext
HEVC support

Smart TV

SmartTV apps*: Netflix*, HBO, BBC iPlayer, YouTube, Amazon Prime Video, Disney+
OS: TITAN OS
Memory size (Flash)*: 8 GB

Smart TV Features

Interactive TV: HbbTV
Voice assistant*: Works with Alexa, Works with Google Home
Smart Home experience: MATTER, Control4

Multimedia Applications

Video Playback Formats: AVI, MKV, HEVC, H.264/MPEG-4 AVC, MPEG1, MPEG2, MPEG4, VP9, HEVC (H.265), AV1
Music Playback Formats: MP3, WAV, AAC, FLAC
Subtitles Formats Support: SRT, SMI, SSA, SUB,

ASS, TXT
Picture Playback Formats: JPEG, GIF, PNG, BMP, HEIF

Sound

Audio: 2.0 Channel
Output power (RMS): 12 W
Speaker configuration: 2 x 6 W full-range speaker
Sound Engine: Basic Sound Engine
Main Speaker: Full Range Bass Reflex (FR01A)

Connectivity

Number of HDMI connections: 3
EasyLink (HDMI-CEC): Remote control pass-through, System audio control, System standby, One touch play
Number of USBs: 2
Wireless connection: Wi-Fi 802.11n, 2 x 2, Single band
HDCP 2.3: Yes on all HDMI
HDMI ARC: Yes on HDMI1
EasyLink 2.0: External setting via TV UI, HDMI-CEC for Philips TV/SB

Specifications

Supported HDMI video features

HDR: HDR10, HLG

EU Energy card

EPREL registration numbers: 2243677

Energy class for SDR: F

On mode power demand for SDR:

27 kWh/1000h

Energy class for HDR: G

On mode power demand for HDR:

39 kWh/1000h

Off mode power consumption: n.a.

Networked standby mode: 2.0 W

Panel technology used: LED LCD

Power

Mains power: AC 100 - 240 V 50/60 Hz

Standby power consumption: less than 0.5 W

Power Saving Features: Auto switch-off timer,

Picture mute (for radio), Eco mode, Light sensor

Accessories

Included accessories: 2 x AAA Batteries, Power cord, Remote Control, Tabletop stand, Quick start guide, Safety and Legal Leaflet

Design

Colours of TV: Plastic black low bezel

Stand design: Plastic charcoal soap bar

Dimensions

Distance between 2 stands: 598 mm

Wall-mount compatible: 100 x 100 mm

TV without stand (W x H x D):

728 x 433 x 87 mm

TV with stand (W x H x D): 728 x 451 x 178 mm

Package carton (W x H x D): 848 x 520 x 150 mm

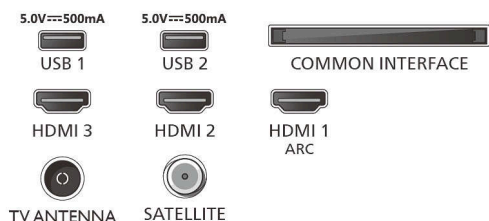
Weight of TV without stand: 4.53 kg

Weight of TV with stand: 4.63 kg

Weight incl. packaging: 7.4 kg

Connections

Side



Down



- * This television contains lead only in certain parts or components where no technology alternatives exist in accordance with existing exemption clauses under the RoHS Directive.
- * The TV supports DVB reception for 'Free to air' broadcast. Specific DVB operators may not be supported. An up-to-date list can be found in the FAQ section of the Philips support website. For some operators Conditional Access and subscription are required. Contact your operator for more information.
- * Smart TV app availability varies by TV model and country. For more details, please visit: www.philips.com/smarttv.
- * Philips TV Remote app and related functionalities vary by TV model, operator and country, as well as smart device model and OS. For more details, please visit: www.philips.com/TVRemoteapp.
- * EPG and actual visibility (up to 8 days) is country- and operator-dependent.
- * Netflix subscription required. Subject to terms on <https://www.netflix.com>
- * Amazon Prime is available in selected languages and countries.
- * Amazon, Alexa and all related logos are trademarks of Amazon.com, Inc. or its affiliates. Amazon Alexa is available in selected languages and countries.
- * Over-the-top media services button on the remote control will be different in each country. Please refer to the actual product in the box.
- * Google Assistant is available in different languages and countries specific to product types.
- * Scope of voice control services via the TV varies according to country and language. For the latest information, please contact our customer care.
- * *Apple, AirPlay and Apple Home are trademarks of Apple Inc., registered in the U.S. and other countries and regions.