

# PHILIPS

## Valve

### Philips Avent

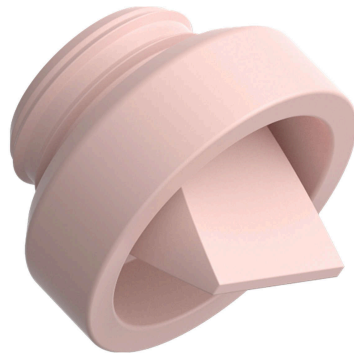
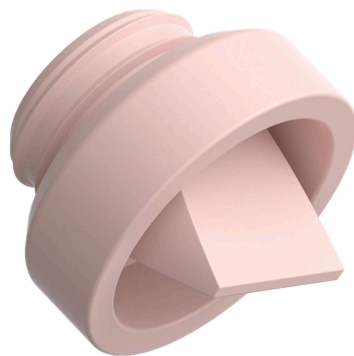
Breast pumps

Pink

4 pc in a pack

We recommend checking your breast pump's valves regularly to keep the valves in good condition.

CP2203



## Transfers breast milk from breast to collection cup

Check for compatibility below

This valve maintains the vacuum and helps breast milk to pass from pump to bottle. If your breast pump's suction strength is low, check the valve for damage and whether or not it is fully closed. Replace the valve for a properly functioning pump.

# Specifications

## Replaceable part

Fits product types: SCD553, SCF439, SCF442,  
SCF481, SCF531, SCF532, SCF533, SCF534,  
SCF537, SCF539, SCF543, SCF547

