

PHILIPS



Hair Dryer with
ThermoShield Advanced

Hair Dryer 8000 Series

ThermoShield Advanced sensors
Powerful Brushless DC motor
Dual Airstream Technology
Gentle mode for scalp care



BHD837/03

Our fastest hair dryer yet

Protects from heat damage for moisture-rich hair

Introducing the Philips 8000 Series Hair Dryer. Our most compact high-speed ionic hair dryer, designed to protect hair against heat damage with ThermoShield Advanced temperature sensors for strong, shiny, moisture-rich hair in no time.

Ease of use

- Compact and comfortable to use high-speed dryer
- Easy maintenance with auto-clean mode

Fast and Powerful drying

- Fast drying in 3 minutes or less*

Sustainability

- Uses up to 50% less energy*****

Caring and protective

- Protect your hair from heat damage
- Boost shine and reduce frizz
- Extra care for scalp and fine hair
- Moisture-rich shine with ionic care

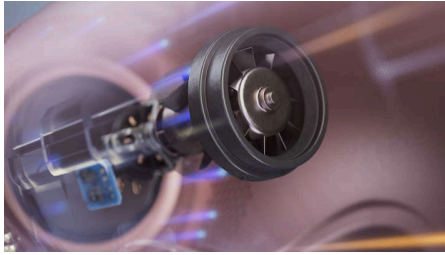
Hair Dryer 8000 Series

Hair Dryer with ThermoShield Advanced

BHD837/03

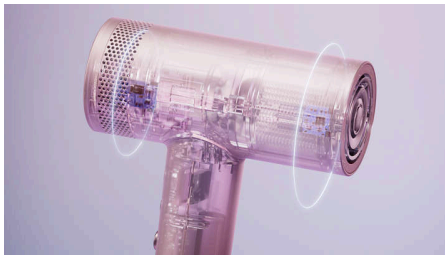
Highlights

Powerful Brushless DC motor



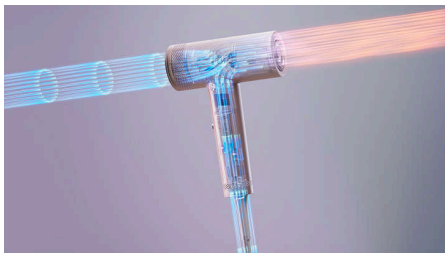
Take your hair from wet to dry in just a few minutes with our most powerful high-speed hair dryer yet. Spinning up to 110,000 times per minute, the state-of-the-art Brushless DC motor delivers efficient drying air at 228 km (141 miles) an hour, so your best hair days can start as soon as possible!

ThermoShield Advanced sensors



Protect your hair from heat damage and maintain up to 100%** of its natural strength thanks to ThermoShield Advanced technology. The technology's sensors are designed to detect ambient temperature 200 times per second then adjust drying heat to keep your hair protected and strong. Healthy feeling hair and peace of mind, dry after dry.

Dual Aistream Technology



Experience smooth, glossy hair thanks to Dual Aistream technology's ultra stable performance, which draws air from two inlets simultaneously,

then condenses them into one powerful stream of drying air. But don't just take our word for its results – 94% of users*** say their hair feels smooth after using the Philips 8000 Series hair dryer.

Dedicated Gentle mode



Take extra care of scalp and fine hair with the dryer's specially programmed Gentle mode. Designed to be kind, 97% of users**** agree that the hair dryer delivers a gentle experience on scalp.

Ionic care



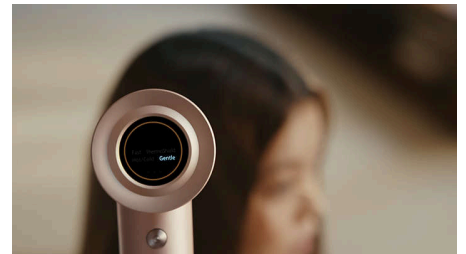
Discover soft, supple, healthy-looking hair from root to tip with ionic care. The hair dryer releases up to 200 million negative and water ions***** to enhance your hair's moisture-rich shine by up to 58%.*****

Lightweight and compact



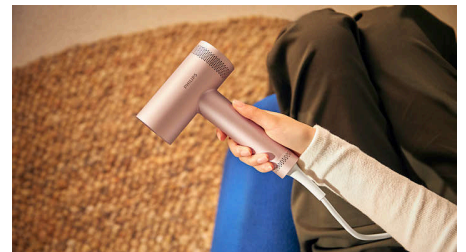
Weighing in at only 395g,***** our lightest high-speed hair dryer weighs little more than a can of soda! Being so compact, it's comfortable to use and convenient to take with you, even when traveling light.

Auto-clean mode



It couldn't be easier to keep this hair dryer dust-free. Simply activate the auto-clean mode, and the dryer's fan blades will do the rest, reversing their rotation to clean out any dust from the filter.

Reducing energy consumption



The Philip 8000 Series Hair Dryer uses up to 50%***** less energy yet delivers the most powerful drying of any Philips high-speed hair dryer. Your best hair day, with less impact on the planet.

Hair Dryer 8000 Series

Hair Dryer with ThermoShield Advanced

BHD837/03

Specifications

Attachments

Magnetic 8 mm styling nozzle

Technical specifications

Color/finishing: Rose Champagne

Cord length: 2 m

Wattage: 1400 W

Voltage: 220-240 V

Motor: Brushless DC (110,000 RPM)

Weight: 395 g

Average air speed: 228 km/h

Features

Temperature settings: 7 (45°C - 95°C, Cool Shot mode)

Speed settings: 3

Pre-set modes: 4 (Fast, ThermoShield Advanced, Hot-Cold, Gentle), Memory function that

automatically activates the last used setting when the dryer is turned on.

Auto-Cleaning mode

Service

2-year worldwide guarantee

Caring technologies

Ionic: Negative and water ions

© 2025 Koninklijke Philips N.V.
All Rights reserved.

Issue date 2025-04-03
Version: 3.3.1

EAN: 87 20689 03833 1

www.philips.com



Specifications are subject to change without notice. Trademarks are the property of Koninklijke Philips N.V. or their respective owners.

* Tested on 30 cm long Caucasian hair using the highest heat and speed setting
* * Tested at ThermoShield mode vs air dry
* * * Tested with 31 users under Hot/Cold mode
* * * * Tested with 31 users under Hot/Cold mode
* * * * * Tested under highest heat and speed setting
* * * * * Tested under Hot/Cold mode, vs air dry
* * * * * Without cord and accessories
* * * * * Versus Philips BHD530 with 2300W, tested under highest heat and speed setting