

# PHILIPS

## EVNIA

Quad HD gaming  
monitor

Fast IPS Gaming  
monitor

Evnia 3000

27" (68.5 cm)

2560 x 1440 (QHD)

27M3N3540P



## Broaden your gaming horizon

This Fast IPS monitor offers gamers speed without skimping on image quality. With an ultra-fast 240hz refresh rate and HDR 400 quality visuals, gamers will experience seamless imagery with a monitor that can match their speed.

### Features designed for gamers needs

- SmartImage game mode optimized for gamers
- LowBlue mode and Flicker-free easy-on-the eyes viewing
- EasySelect menu toggle key for quick on-screen menu access
- Smart Crosshair: for better aim and more fun

### Built for fast action

- Fast IPS Panel: For rapid and crystal-clear gaming
- Ultra-fast 240 Hz refresh rate for virtually lag-free gaming
- Low input lag reduces time delay between devices to monitor

### Immersive visuals

- SmartContrast for rich black details
- Crystalclear images with Quad HD 2560 x 1440 pixels
- DisplayHDR 400 for more lifelike and outstanding visuals

# Fast IPS Gaming monitor

Quad HD gaming monitor

27M3N3540P/74

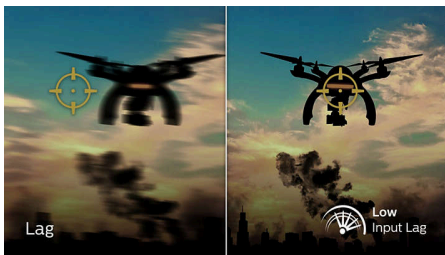
## Highlights

### Ultra-fast 240 Hz refresh rate



While playing the most intense engaging action-oriented games, ultra-fast 240 Hz refresh rate enhances an ultra-smooth, lag-free gaming experience. This Philips display redraws the screen image up-to 240 times per second, effectively faster than a standard display. Especially for fast-paced games like FPS and racing games, 240 Hz gives a superior motion and clarity visuals. With Philips 240 Hz display, action sequences in gameplay look judder-free and ghost-free. You will experience deeper immersion and feeling alive in game.

### Low input lag



Input lag is the amount of time that elapses between performing an action with connected devices and seeing the result on screen. Low input lag reduces the time delay between entering a command from your devices to monitor, greatly improve on playing twitch-sensitive video games, particularly important to whom plays fast-paced, competitive games.

### Fast IPS



This feature is made for action-packed gameplay. Not only does it produce virtually blur-free gaming, but it also pairs well with high frame rates for the best and sharpest imagery, guaranteed.

### Crystalclear images



These Philips screens deliver Crystalclear, Quad HD 2560x1440 or 2560x1080 pixel images. Utilizing high performance panels with high density pixel count, enabled by high bandwidth sources like USB-C, Displayport, HDMI, these new displays will make your images and graphics come alive. Whether you are demanding professional requiring extremely detailed information for CAD-CAM solutions, using 3D graphic applications or a financial wizard working on huge spreadsheets, Philips displays will give you Crystalclear images.

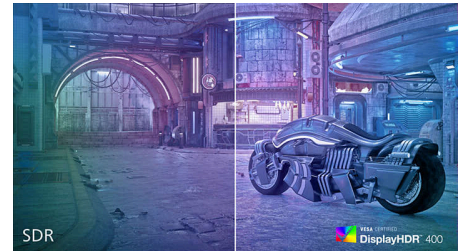
### SmartContrast



SmartContrast is a Philips technology that analyzes the contents you are displaying, automatically adjusting colors and controlling

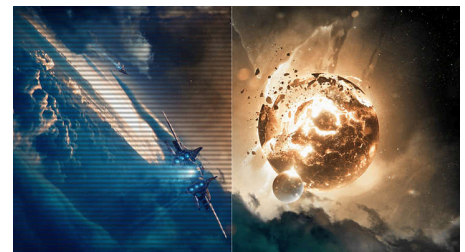
backlight intensity to dynamically enhance contrast for the best digital images and videos or when playing games where dark hues are displayed. When Economy mode is selected, contrast is adjusted and backlighting fine-tuned for just-right display of everyday office applications and lower power consumption.

### DisplayHDR 400



VESA-certified DisplayHDR 400 delivers a significant step-up from normal SDR displays. Unlike, other 'HDR compatible' screens, true DisplayHDR 400 produces astonishing brightness, contrast and colors. With global dimming and minimum 400 nits brightness, images come to life with notable highlights while featuring deeper, more nuanced blacks. It renders a fuller palette of rich new colors, delivering a visual experience that engages your senses.

### LowBlue mode & Flicker-free



Our LowBlue Mode and Flicker-free technology have been developed to reduce eye strain and fatigue often caused by long hours in front of a monitor.



## Fast IPS Gaming monitor

Quad HD gaming monitor

27M3N3540P/74

# Highlights

### EasySelect Menu Toggle Key



The discreetly placed EasySelect Menu Toggle Key allows you to make quick and easy adjustments to monitor settings in the On-Screen Display menu.

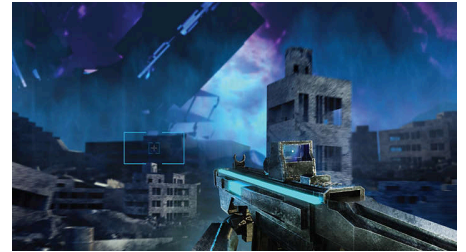
### SmartImage Game mode



The new Philips gaming display has quick access OSD fine tuned for gamers, offering you multiple options. "FPS" mode (First person shooting) improves dark themes in games, allowing you to see hidden objects in dark areas. "Racing" mode adapts display with fastest response time, high color, along with image adjustments. "RTS" mode (Real time strategy) has a special SmartFrame mode which enables highlighting of specific area and allows for size and image

adjustments. Gamer 1 and Gamer 2 enable you to save personal customized settings based on different games, ensuring best performance.

### Smart Crosshair



Color of Crosshair is set by default. When Smart Crosshair is on, the color will change as complementary color to the background color. Smart Crosshair enhances the accuracy of aiming so you can spot the enemies more easily.



# Fast IPS Gaming monitor

Quad HD gaming monitor

27M3N3540P/74

## Specifications

### Picture/Display

**Panel Size:** 27 inch / 68.5 cm

**Aspect ratio:** 16:9

**LCD panel type:** IPS technology

**Backlight type:** W-LED system

**Pixel pitch:** 0.2331mm(H) x 0.2331mm(V)

**Brightness:** 350 cd/m<sup>2</sup>

**Display colors:** 16.7M (8bits)

**Color gamut (typical):** DCI-P3 95%, AdobeRGB 90%, sRGB 120%, NTSC 105% \*

**Contrast ratio (typical):** 1000:1

**SmartContrast:** Mega Infinity DCR

**Viewing angle:** 178° (H) / 178° (V), @ C/R > 10

**Picture enhancement:** SmartImage game

**SmartResponse:** 1 ms (Gray to Gray)\*

**Maximum resolution:** HDMI: 2560 x 1440@

144Hz, DP: 2560 x 1440@ 240Hz, 8bits, RGB/444

**Effective viewing area:** 596.736mm(H) x

335.664mm(V)

**Scanning Frequency:** HDMI: 30-218 kHz(H) / 48-

144 Hz(V), DP:30-353 kHz(H) / 48 -240 Hz(V)

sRGB

**Delta E:** < 2 (sRGB)

**Flicker-free**

**Pixel Density:** 108 PPI

**Display Screen Coating:** Anti-Glare, 3H, Haze 25%

**Low Input Lag**

**Adaptive sync**

**HDR:** HDR 400

**Smart Crosshair**

**Shadow Boost**

### Connectivity

**Signal Input:** HDMI 2.0x 2, DisplayPort 1.4 x 1

**Sync Input:** Separate Sync

**Audio (In/Out):** Headphone out

**USB::** USB-A only to the FW update

**HDCP:** HDCP 2.2 (HDMI / DisplayPort), HDCP 1.4 (HDMI / DisplayPort)

### Convenience

**Plug & Play Compatibility:** DDC/CI, Mac OS X, sRGB, Windows 11 / 10

**User convenience:** Power On/Off, Menu/OK, Input/Up, Game Mode/Down, SmartImage game/Back

**OSD Languages:** Brazil Portuguese, Czech, Dutch, English, Finnish, French, German, Greek, Hungarian, Italian, Japanese, Korean, Polish, Portuguese, Russian, Spanish, Simplified Chinese, Swedish, Turkish, Traditional Chinese, Ukrainian

**Other convenience:** Kensington lock, VESA mount (100x100mm)

### Stand

**Tilt:** -5/20 degree

### Power

**Power supply:** Internal, 100-240VAC, 50-60Hz

**Off mode:** 0.3 W (typ.)

**On mode:** 32.4 W (typ.)

**Standby mode:** 0.5 W (typ.)

**Power LED indicator:** Operation - White, Standby mode- White (blinking)

### Dimensions

**Packaging in mm (WxHxD):** 754 x 481 x 178 mm

**Product without stand (mm):** 613 x 367 x 58 mm

**Product with stand(max height):** 613 x 474 x 257 mm

### Weight

**Product with packaging (kg):** 8.5 kg

**Product with stand (kg):** 5.1 kg

**Product without stand (kg):** 4.4 kg

### Operating conditions

**Altitude:** Operation: +12,000ft (3,658m), Non-operation: +40,000ft (12,192m)

**Temperature range (operation):** 0°C to 40 °C

**MTBF:** 30,000 (Excluded backlight) hour(s)

**Relative humidity:** 20%-80 %

**Temperature range (storage):** -20°C to 60 °C

### Sustainability

**Environmental and energy:** RoHS

**Recyclable packaging material:** 100 %

### Compliance and standards

**Regulatory Approvals:** CCC, CECP, CEL

### Cabinet

**Color:** Black

**Finish:** Textured

### Design

**Designed in Amsterdam, NL**

