

# PHILIPS



## 2K LED TV

### LED

80 cm (32") TV

Pixel Plus HD

HDR10 colour and contrast

Dolby Audio



32PHS6050

## Small. Smart. Utterly versatile.

Think compact. Pick a price to fit your needs. Let Titan OS help you find all the things you love to watch in HD, and fast. With clear, crisp sound, pixel-sharp images and seamless voice control, sit back, relax and enjoy the ride.

### **Small, smart, easy**

- Titan OS. Find it easily.
- Connect seamlessly to smart home networks

### **Good value. Great performance**

- Small, smart and versatile
- Get a better view with HD

### **Forward thinking design**

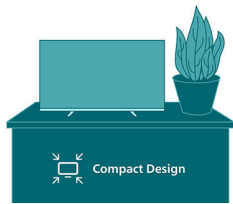
- Add clarity to each word with Vocal Boost
- European values in design
- The size that fits your needs

### **Vivid viewing, crisper sound**

- Colour and contrast with HDR10 and HLG
- Dolby Audio for crisp, clear sound

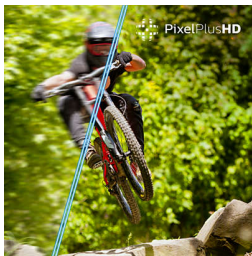
# Highlights

## Compact design



Size matters. With its small, lightweight and compact design, this smart TV is the perfect fit for any space. Blends in beautifully at home or on the go.

## HD high resolution



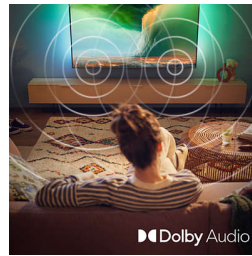
Clear images. Pixel Plus picture sharpness. With high resolution and defined imagery, this LED TV shows that every little detail counts.

## HDR10/HLG



Brighter colours. Vivid tones. From the darkest scenes to the brightest light, clarity is everything. This is where high dynamic range impresses with clearer colour and contrast.

## Dolby Audio

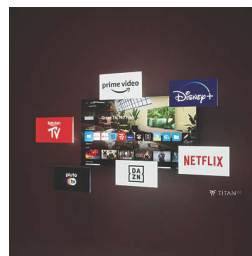


Listen. Hear each moment. This is crystal clear Dolby Audio. From dialogue to dance and from action movie moments to stunning nature scenes, you can experience clearer sound as you go.

## Vocal Boost

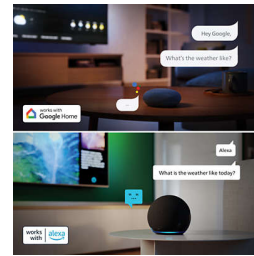
Hear each word clearly. Vocal Boost enables the listener to turn the dialogue volume up or down without any effect on the background sound. You won't miss a single moment now that each spoken sentence comes across with greater clarity.

## Philips Smart TV Titan OS



The Philips Smart TV Titan OS platform brings what you love to watch, and fast. From sequels to series and documentaries to drama, everything you want is there at the touch of a button. Whatever you're looking to watch, keep all the best streaming apps easily within your reach.

## Matter Smart Home compatible



Matter Smart Home compatibility means you can control your TV via Matter Smart Home app or voice control your TV via Alexa-enabled devices or via your Google smart speakers. This way, your voice can find movies, shows, receive recommendations and so much more.

## European design

Finding a design that fits in perfectly with your needs can mean everything. Borderless frame. Defined stand. European know-how. This is where design, picture and sound really come together as the smarter choice.

## Freedom of choice

Think versatility. Choose a TV that works best for you. From bedrooms to bathrooms and kitchens to campervans, its compact design fits in perfectly with your space.

# Specifications

**Picture/Display**

Diagonal screen size (inch): 32 inch  
Diagonal screen size (metric): 80 cm  
Display: LED HD TV  
Panel resolution: 1366 x 768p  
Native refresh rate: 60 Hz  
Picture engine: Pixel Plus HD  
Picture enhancement: ECO, Crystal Clear, Home Cinema, Movie, Game, Monitor, Pixel Plus HD, Personal

**Display input resolution**

Resolution-Refresh rate: 576p - 50 Hz, 640 x 480 - 60 Hz, 720p - 50 Hz/60 Hz, 1366 x 768 - 60 Hz, 1920 x 1080p - 24/25/30/50/60 Hz

**Tuner/Reception/Transmission**

Digital TV: DVB-T/T2/T2-HD/C/S/S2  
Signal strength indication  
Teletext: 1000 page Hypertext  
HEVC support

**Smart TV**

SmartTV apps\*: Netflix\*, HBO, BBC iPlayer, YouTube, Amazon Prime Video, Disney+  
OS: TITAN OS  
Memory size (Flash)\*: 8 GB

**Smart TV Features**

Interactive TV: HbbTV  
Voice assistant\*: Works with Alexa, Works with Google Assistant  
Smart Home experience: Control4, MATTER  
TTS support

**Multimedia Applications**

Video Playback Formats: AVI, MKV, HEVC, H.264/MPEG-4 AVC, MPEG1, MPEG2, MPEG4, VP9, HEVC (H.265), AV1  
Music Playback Formats: MP3, WAV, AAC, FLAC  
Subtitles Formats Support: SRT, SMI, SSA, SUB, ASS, TXT  
Picture Playback Formats: JPEG, GIF, PNG, BMP, HEIF

**Sound**

Audio: 2.0 Channel  
Output power (RMS): 12 W  
Speaker configuration: 2 x 6 W full-range

speakers  
Sound Enhancement: Dialogue, Music, Original, Entertainment, Equalizer, Vocal Boost, AVL Mode, Night mode  
Sound Engine: Basic Sound Engine

**Connectivity**

Number of HDMI connections: 3  
HDMI features: Audio Return Channel  
EasyLink (HDMI-CEC): Remote control pass-through, System audio control, System standby, One touch play  
Number of USBs: 2  
Wireless connection: Wi-Fi 802.11n, 2 x 2, Single band  
HDCP 2.3: Yes on all HDMI  
HDMI ARC: Yes on HDMI1  
EasyLink 2.0: External setting via TV UI, HDMI-CEC for Philips TV/SB

**Supported HDMI video features**

HDR: HLG, HDR10

# Specifications

## EU Energy card

EPREL registration numbers: 2302514

Energy class for SDR: E

On mode power demand for SDR:

22 kWh/1000h

Energy class for HDR: G

On mode power demand for HDR:

36 kWh/1000h

Off mode power consumption: n.a

Networked standby mode: 2.0 W

Panel technology used: LED LCD

## Power

Mains power: AC 100-240 V 50/60 Hz

Standby power consumption: less than 0.5 W

Power Saving Features: Auto switch-off timer,

Light sensor, Picture mute (for radio), Eco mode

## Accessories

Included accessories: Power cord, 2 x AAA

Batteries, Legal and safety brochure, Tabletop stand, Remote Control

## Design

Colours of TV: Plastic black low bezel

Stand design: Plastic charcoal soap bar

## Dimensions

Distance between 2 stands: 639 mm

Wall-mount compatible: 200 x 150 mm

TV without stand (W x H x D):

716 x 428 x 69 mm

TV with stand (W x H x D): 716 x 447 x 192 mm

Package carton (W x H x D): 790 x 480 x 114 mm

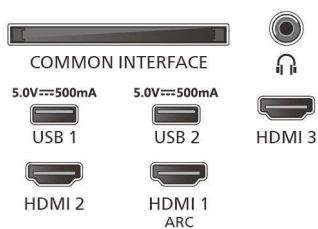
Weight of TV without stand: 3.25 kg

Weight of TV with stand: 3.33 kg

Weight incl. packaging: 4.5 kg

## Connections

### Side



### Down



\* This television contains lead only in certain parts or components where no technology alternatives exist in accordance with existing exemption clauses under the RoHS Directive.

\* The TV supports DVB reception for 'Free to air' broadcast. Specific DVB operators may not be supported. An up-to-date list can be found in the FAQ section of the Philips support website. For some operators Conditional Access and subscription are required. Contact your operator for more information.

\* Smart TV app availability varies by TV model and country. For more details, please visit: [www.philips.com/smarttv](http://www.philips.com/smarttv).

\* Philips TV Remote app and related functionalities vary by TV model, operator and country, as well as smart device model and OS. For more details, please visit: [www.philips.com/TVRemoteapp](http://www.philips.com/TVRemoteapp).

\* EPG and actual visibility (up to 8 days) is country- and operator-dependent.

\* Netflix subscription required. Subject to terms on <https://www.netflix.com>

\* Amazon Prime is available in selected languages and countries.

\* Amazon, Alexa and all related logos are trademarks of Amazon.com, Inc. or its affiliates. Amazon Alexa is available in selected languages and countries.

\* Over-the-top media services button on the remote control will be different in each country. Please refer to the actual product in the box.

\* Google Assistant is available in different languages and countries specific to product types.

\* Scope of voice control services via the TV varies according to country and language. For the latest information, please contact our customer care.