

# PHILIPS

## Face + Body

### OneBlade Pro

Rechargeable Li-Ion battery

12-length precision comb

Wet & Dry use

Battery indicator



QP6542/10

## Trim edge & shave any length of hair

Designed to cut hair, not skin

Philips OneBlade Pro Face + Body trims, edges and shaves any length of hair. You get a blade for your face, and one with a skin guard for your body. Forget about using multiple tools. OneBlade does it all.

#### Easy to use

- Fully waterproof
- Click-on body comb (3 mm)
- Charge anytime, anywhere
- Blade that doesn't fade easily
- 90 min Li-Ion battery
- LED light shows battery status

#### Comfortable shave

- Unique OneBlade Technology
- Shave it off
- Click-on skin guard for sensitive areas

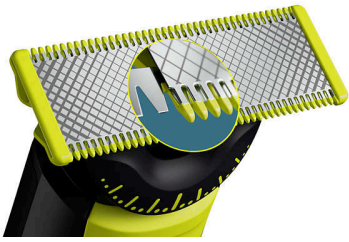
#### Sharp edges

- Edge it up
- Dual-sided blade: designed for precision and control

#### Even trim

## Highlights

### Unique OneBlade Technology



Philips OneBlade has a revolutionary technology designed for facial grooming. It can shave any length of hair. Its dual protection system - a glide coating combined with rounded tips - makes shaving easier and comfortable. Its shaving technology features a fast-moving cutter (12000x per min) so it's efficient - even on longer hairs.

### Trim it down



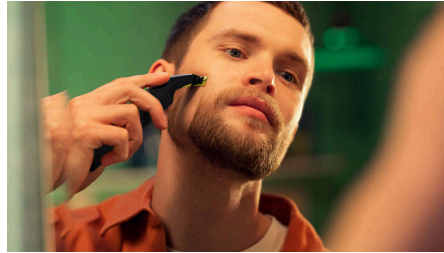
Trim your beard to an even length with the included adjustable precision comb. Dial up one of the 12 lock-in length settings to get everything from a 5 o'clock shadow, to a tight trim, to a longer beard style.

### Edge it up



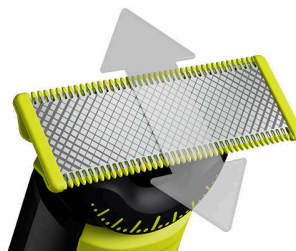
Create precise edges with the dual-sided blade. You can shave in either direction to get great visibility and see every hair that you're cutting. Line up your style in seconds!

### Shave it off



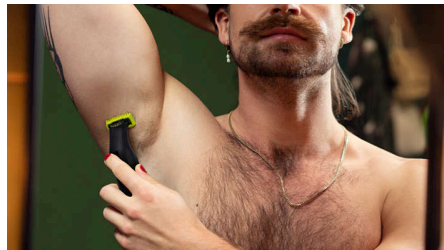
OneBlade does not shave as close as a traditional blade - so your skin stays comfortable. Go against the grain and shave off any length of hair easily.

### Dual-sided blade



OneBlade follows the contours of your face, allowing you to easily and comfortably shave all areas. Use the dual-sided blade to style your edges and create clean lines by moving the blade in any direction.

### Click-on skin guard



Attach the skin guard for an extra layer of protection on sensitive areas.

### Click-on body comb



Attach the body comb (3 mm) for an easy trim in any direction.

### USB-A charging



Can be charged at home or on the road, perfect for your daily routine and for travel.

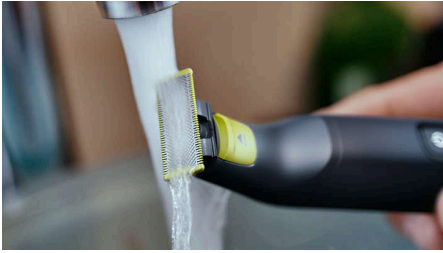
### Blade that doesn't fade easily



Stainless steel blade that lasts up to 4 months of use\*\* to keep that fresh feel. An eject icon will appear on the blade when the blade is worn out.

## Highlights

### Wet & dry



OneBlade is fully waterproof (IPX7), so it is easy to clean: just rinse it under the tap. You can shave wet or dry, even in the shower - whichever you prefer. No shaving foam needed.

### 90 min Li-Ion battery



Rechargeable Li-Ion battery delivers 90 minutes of constant styling power after a 1 hour charge.

### Battery indicator



Be sure that your OneBlade is always ready to go by checking the battery indicator. It alerts you while in-use when your battery is low, and indicates charging progress when plugged in.

## Specifications

### Trimming & shaving performance

**Shaving system:** Contour-following technology, Dual protection system

**Trimming system:** Contour-following technology

### Accessories

**Comb:** 12-length comb (0.5 - 9 mm), Click-on skin guard, Click-on body comb

**Maintenance:** Protection cap

**Extra replaceable blade**

### Power

**Run time:** 90 minutes

**Automatic voltage:** 100-240 V

**Charging:** 1 hour full charge

**Battery type:** Li-ion

**Max power consumption:** 5.4 W

### Design

**Handle:** Ergonomic grip & handling

**Color:** Black

### Service

**Replacement head:** Replace every 4 months\*\*, QP210, QP220, QP230, QP610, QP620, QP410, QP420, QP410, QP420, QP430

**2-year warranty**

### Ease of use

**Wet & Dry**

**Charging:** Rechargeable, USB-A Charging (5V<sup>—</sup> / ≥1A)

**Display:** 3 LED battery indicator

**USB-A charging:** Power Adapter not included

