

# PHILIPS



## Air Styler

### 5000 Series

2 styling attachments

Even heat distribution

4x more ions\*

Ceramic Argan Oil



BHA531/10

## Versatile voluminous hairstyles with extra care

Philips Air Styler 5000 for the easy hair styles everyday. The warm air is evenly distributed throughout the brush, while Ionic care helps your hair to shine more.

### Beautifully styled hair

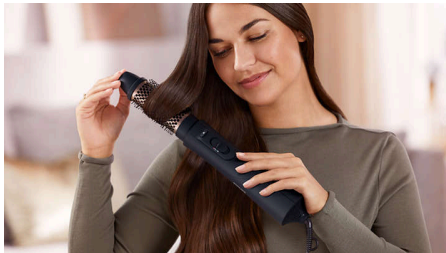
- 2 attachments
- Three flexible heat and speed settings for easy control
- 38 mm ThermoBrush for smooth styles and waves
- Paddle straightening brush for naturally straight look

### Care and protect

- Care setting for better protection while drying and styling
- Argan-oil infused ceramic plates for smooth gliding

# Highlights

## 38 mm ThermoBrush



The ThermoBrush has an extra wide diameter of 38 mm. The width of the barrel makes it the perfect styling tool for creating smooth styles and waves.

## Paddle straightening brush



The paddle-shaped straightening brush is designed to help you create naturally straight look in one go.

## Variety of styles and volume



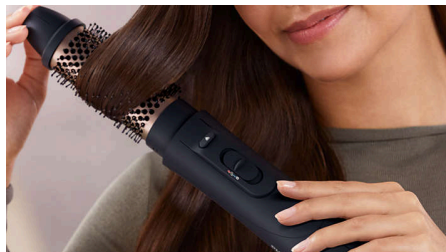
This Air Styler features 2 attachments to create different styles - from naturally straight look, to defined waves and volume at the roots.

## Care setting



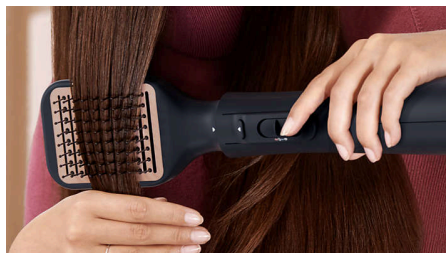
The 'Care' setting ensures the optimum drying temperature and guards against overheating. Hair still dries fast, with the same powerful airflow but at a constant, caring temperature.

## Three flexible settings



Enjoy the combined three heat and two speed settings which will create the perfect end result. You can choose between a low and high speed setting with 3 corresponding heat settings; Cool, Care and High. The flexible settings ensure a powerful airflow with a caring temperature for a precise and tailored styling.

## Argan-oil infused plates



The straightener uses ceramic plates infused with argan oil to make styling fast and effortless, with a gliding action that feels as silky smooth as your hair looks.

# Specifications

## Attachments

**Paddle straightening brush:** For naturally straight looks

**38 mm ThermoBrush:** For smooth styles and waves

## Power

**Voltage:** 220-240V

**Wattage:** 1000W

## Technical specifications

**Number of heat settings:** 3 heat with 2 speed

## Service

**2-year worldwide warranty**

## Ease of use

**Storage hook**

**Cable length:** 2m

## Caring technologies

**EHD technology**

**Caring temperature setting**

**4x Ion technology:** \*

