

PHILIPS



Wet and Dry Electric
Shaver with SkinIQ Pro

i9000 Prestige Ultra

Triple Action Lift & Cut
Technology

NanoTech Dual Precision Blades

360° Precision Flexing Head

Active Pressure and Motion
Guidance



Product Picture

XP9401/38

Day-long close shave, ultimate skin comfort with SkinIQ Pro Technology

Philips i9000 Prestige Ultra, our most innovative shaver with its Triple Action Lift & Cut system that cuts hair at root-level for day-long closeness, even in hard-to-shave-areas. SkinIQ Pro now brings 5 shaving modes for ultimate skin comfort.

Shaving performance

- Root-level closeness, day-long result
- Precision, even in the hardest-to-shave areas
- Efficient in every pass, even on a 1, 3 or 7-day beard

Convenience

- Ultimate precision trim & style in one pass
- Deep cleaning in 1 minute for hygienic shave
- Removes unwanted hairs. All of them.
- Shave as you want: refreshing wet, dry or with foam
- One-touch open for easy cleaning
- Convenient charging

Premium experience

- Ultimate experience, personalised to you with 5 shaving modes
- Built to last longer: 7 year warranty*****

Skin comfort (Skin IQ Pro)

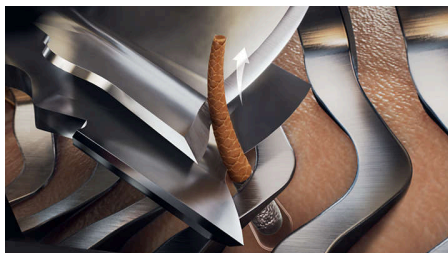
i9000 Prestige Ultra

Wet and Dry Electric Shaver with SkinIQ Pro

XP9401/38

Highlights

Triple Action Lift & Cut System



Our patented Triple Action Lift & Cut system lifts the hair gently from its root to cut it precisely up to -0.08 mm at root level, without cutting your skin. For an ultimate closeness that lasts all day.

360° Precision Flexing Head



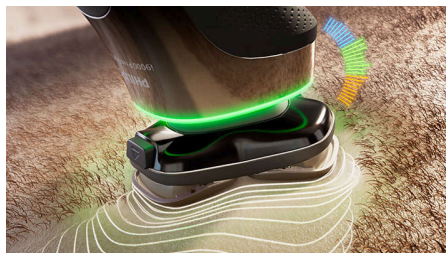
Fully flexible and smaller compact heads with skin-stretching patterns dynamically adapt to every curve of your face. For constant skin contact with 20% more precision** to catch difficult hairs on the neck and under the nose. Precision everywhere.

NanoTech Dual Precision Blades



Designed to catch hair growing in different directions, 360° rotating NanoTech Dual Precision blades catch 25% more hair per stroke*, with 8 million cutting motions per minute for precise efficiency even on a 1, 3 or 7-day beard.

Active Pressure & Motion Guidance



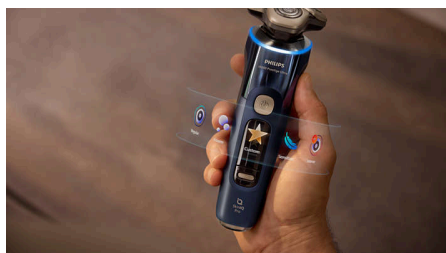
Powered by AI, our Active Pressure & Motion guidance system lights up to provide real-time feedback on the ideal shaving pressure and motion you use. For advanced skin comfort and efficient shaving performance.

Hydro SkinGlide Coating



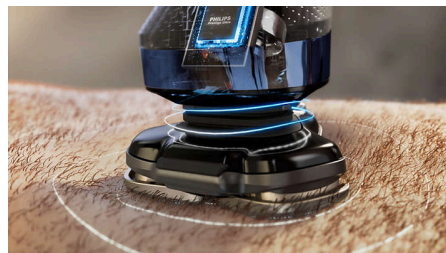
Our most advanced skin protection delivers 50% smoother gliding on skin***, with a hydrophilic coating that contains up to 500,000 microtech beads per square centimetre. For less friction and maximum comfort.

Customised Shaving Modes



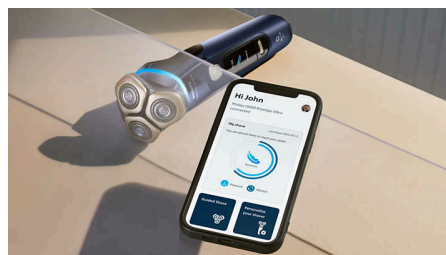
Our 5 shaving modes adapt the power and pressure guidance for a tailored shave: Regular for daily use, Sensitive for a gentle shave, Intense for thick beards, Foam for wet shaving and Custom for your personalised needs.

Power Adapt Sensor



The shaver's intelligent sensor reads hair density 500 times a second and auto-adapts the cutting power for an effortless and gentle shave, even on dense beards.

Improve efficiency with our app



Pair your shaver with our app for an ever-better routine and technique. Experience real-time guidance and personalised shaving insights to help you look and feel your best every day.

7 Year Warranty



Our shavers are designed for care and a long life. The self-sharpening blades are made with durable space-grade steel and last 2 years between replacement. Our battery and motor are designed to last up to 7 years.

i9000 Prestige Ultra

Wet and Dry Electric Shaver with SkinIQ Pro

XP9401/38

Highlights

Cable-free Quick Clean Pod



Our cleaning pod is 10 times more effective than water****, thoroughly cleaning and lubricating your shaver in one minute to keep your shaver like new. Compact and cable-free, the pod can be used and stored anywhere.

5+1 Precision Beard Styler



Precision Beard Styler has 5 adjustable length settings (1 mm to 5 mm) for consistent and precise trimming, styling and edging, even on the longest beard. Rounded space-grade steel tips prevent skin irritation.

Nose Trimmer Attachment



Our click-on nose trimmer features ProtecTrim technology and is angled precisely to effectively remove unwanted hair from your nose and ears.

LED charging stand



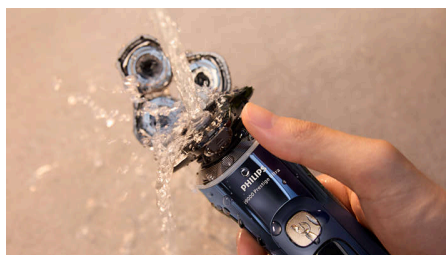
Use our premium charging stand to charge your shaver fully in 1 hour, while the stylish light ring continuously informs you about the status of charging. In a hurry? Plug in your shaver for 5 minutes and get enough power for 1 full shave.

Wet & Dry



Adapt your shaving routines to your needs. Our shaver is 100% waterproof, so you can choose a comfortable dry shave or a refreshing wet shave. You can shave with gel or foam even under the shower.

One-touch open



Clean your electric shaver with the touch of a button. Simply flip open the shaver head and rinse with water.

USB-A Charging



At Philips, we drive sustainability in all aspects of product creation. Our ambition is to reduce waste and minimise the number of USB adapters we put in the market. Should you need an adapter, a suitable supply unit is available via: www.philips.com/support

Travel Pouch



The i9000 Prestige Shaver comes neatly packed in a travel case, ideal for travel or keeping it safe when it's not in use.

Sustainability



All our i9000 shavers are made with high-quality, long-lasting components and recyclable packaging, while our blades are produced in a factory that uses 100% renewable energy.

i9000 Prestige Ultra

Wet and Dry Electric Shaver with SkinIQ Pro

XP9401/38

Specifications

Accessories

Attachments: Beard styler, Nose trimmer

Quick Clean Pod: Yes, 1 cartridge included

Travel and storage: Premium pouch

Charging stand with light

Software

App: GroomTribe, Connects via Bluetooth®

Smartphone compatibility: iPhone and Android™ devices

Power

Run time: 60 minutes

Battery type: Li-Ion

Charging: 1 hour full charge, 5-min quick charge

Design

Handle: Ergonomic grip and handling

Finishing: Timeless elegance

Colour: Adriatic

Service

Replacement head: Replace every 2 yrs with SH91

7-year warranty

Shaving Performance

Contour following: 360° Precision Flexing Head

Shaving system: Triple-Action Lift & Cut System, NanoTech Dual Precision blades

SkinIQ Pro Technology: Pressure and Motion Guidance, Hydro SkinGlide Coating, Power Adapt sensor, 5 Shaving Modes

Ease of use

Display: % Battery Level Indicator, Travel lock, Connect to app, Colourful LCD display, 13 Languages Supported

Wet & Dry: Wet and dry use

Cleaning: One-touch open, Fully washable, Quick Clean Pod

