

PHILIPS



4K AMBILIGHT tv

OLED

139 cm(55") AMBILIGHT tv

P5 AI perfect picture engine

Google TV™

Dolby Vision and Dolby Atmos



55OLED789

Lifelike. Immersive. Gorgeous.

4K AMBILIGHT tv

This elegant OLED Ambilight TV entrances with its lifelike picture and powerful sound. The beautifully thin, bezel-free screen lets the action take center stage—while Ambilight's glow makes everything seem even bigger and more immersive.

4K OLED Ambilight TV. Designed to mesmerize.

- Immerse in what you love. Ambilight TV.
- Whatever you watch, a picture so real. P5 engine with AI.
- Detail and depth. Lifelike OLED picture.
- Entertainment you love, with a little help from Google

Lifelike depth and detail. Smooth motion.

- Philips Wireless Home System powered by DTS Play-Fi.
- Epic gaming. 120 Hz, ultra-low lag, G-sync, VRR, FreeSync.
- Cinematic vision and sound. Dolby Vision and Dolby Atmos
- Supports all major HDR formats.

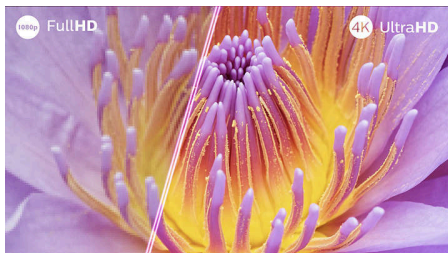
OLED

4K AMBILIGHT tv

55OLED789/98

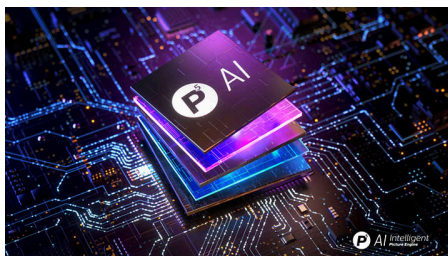
Highlights

Ambilight TV



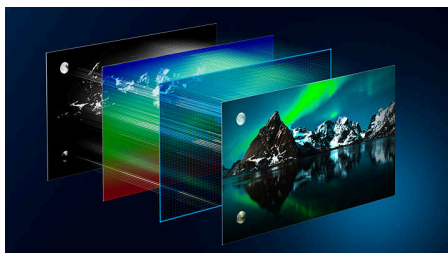
Ambilight TVs are the only TVs with integrated LED lights on the back that react to what you watch, immersing you in a halo of colorful light. It changes everything: your TV seems bigger, and you'll be drawn deeper into your favorite sports, movies, music, and games.

P5 AI perfect picture engine



Philips P5 processor with AI delivers a picture so real it feels like you could step right into it. A deep-learning AI algorithm processes images in a manner similar to the human brain. No matter what you're watching, you get lifelike detail and contrast, rich color, and smooth motion.

OLED Ambilight TV



The lifelike picture of your 4K (UHD) OLED Ambilight TV always looks incredible, even if viewed at an angle. Blacks are always black, not

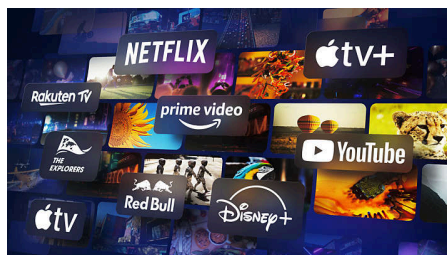
gray, and you'll see every detail in shadows or bright areas. All major HDR formats are supported so you'll feel the full power of every scene.

Epic gaming



Play without limits and immerse in OLEDs incredible realism! HDMI 2.1, a blazing-fast 120 Hz native refresh rate, and ultra-low input lag bring fluid, responsive gameplay, super-smooth natural motion, and great-looking graphics. Ambilights gaming mode brings even bigger thrills.

Google TV™



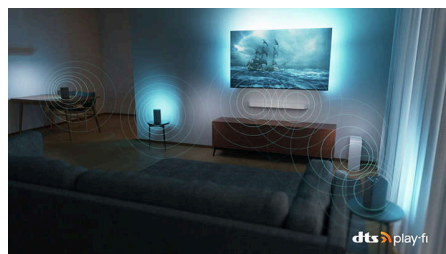
What do you want to watch? Google TV™ brings together movies, shows, and more, from across your apps and subscriptions and organizes them just for you. You'll get suggestions based on what you like, and you can even use the Google TV app on your phone to curate your watchlist on the go.

Dolby Vision & Dolby Atmos



With Dolby Vision and Dolby Atmos on board, your films, shows, and games look and sound incredible. See the picture the director wanted you to see no more disappointing scenes that are too dark to make out! Hear every word clearly. Experience sound effects like they're really happening around you.

DTS Play-Fi compatible



Philips Wireless Home System with DTS Play-Fi lets you connect to compatible soundbars and wireless speakers around your home in seconds. Listen to movies in the kitchen. Play music anywhere. You can even create a home-theater surround-sound system using your Ambilight TV as a central speaker.

AMBILIGHT tv

P AI Intelligent Picture Engine

OLED

AMD FreeSync Premium

Google TV

Dolby Vision Atmos

DTS Play-Fi

OLED

4K AMBILIGHT tv

55OLED789/98

Specifications

Ambilight

Ambilight Features: Wall colour adaptive, Lounge light mode, Game Mode, Ambilight Music, Sunrise Alarm, AmbiSleep, Ambilight FTI Animation, works with Philips Wireless Home Speakers

Ambilight Version: 3-sided

Picture/Display

Display: 4K Ultra HD OLED

Panel resolution: 3840 x 2160

Native refresh rate: 120 Hz

Picture engine: P5 AI Perfect Picture Engine

Picture enhancement: Perfect Natural Motion, Micro Dimming Perfect, Dolby Vision, HLG (Hybrid Log Gamma), Calman, HDR10+ Adaptive, HDR10

Display input resolution

Resolution-Refresh rate: 576p-50Hz, 640x480-60Hz, 720p-50Hz,60Hz, 1920 x 1080p -24/25/30/50/ 60/100/120Hz, 2560 x 1440 - 60/120Hz, 3840x2160p - 24/25/30/50/60/100/120Hz

Tuner/Reception/Transmission

Digital TV: DVB-T/T2

Smart TV Features

Voice assistant*: Google Assistant built-in, Works with Alexa, RC with Mic.

Smart Home experience: Works with Google assistant, Works with Amazon Alexa

Multimedia Applications

Video Playback Formats: AVI, MKV, HEVC,

H.264/MPEG-4 AVC, MPEG1, MPEG2, MPEG4, VP9, HEVC (H.265), AV1

Music Playback Formats: MP3, WAV, AAC, FLAC

Subtitles Formats Support: SRT, SMI, SSA, SUB, ASS, TXT

Picture Playback Formats: JPEG, GIF, PNG, BMP, HEIF

Sound

Audio: 2.0 Channel

Output power (RMS): 20 W

Speaker configuration: 10 W x 2

Codec: Dolby Digital MS12 V2.6.2, Dolby Atmos, DTS:X

Sound Enhancement: Dolby Atmos, Clear Dialogue, A.I. Sound, A.I. EQ, Dolby Volume Leveler, Night mode, Dolby Bass Enhancement, Room Calibration, DTS Play-Fi

Connectivity

Number of HDMI connections: 4

HDMI features: 4K, Audio Return Channel

EasyLink (HDMI-CEC): Remote control pass-through, System audio control, System standby, One touch play

Number of USBs: 2

Wireless connection: Wi-Fi 802.11ac, 2x2, Dual band, Bluetooth 5.0

Other connections: Ethernet-LAN RJ-45, Digital audio out (optical), Headphone out

HDCP 2.3: Yes on all HDMI

HDMI ARC: Yes on HDMI2

HDMI 2.1 features: eARC on HDMI 2, eARC/VRR/ ALLM supported

EasyLink 2.0: External setting via TV UI, HDMI-CEC for Philips TV/SB

Specifications

Supported HDMI video features

HDMI 1/2: HDMI 2.1 full bandwidth 48Gbps, upto 4K 120Hz

Gaming: ALLM, Dolby Vision Game, HDMI VRR, HGIG, AMD FreeSync Premium, Nvidia G-Sync compatible

HDMI 3/4: HDMI 2.0

HDR: Dolby Vision, HDR10, HDR10+, HDR10+ Adaptive, HLG

Power

Mains power: AC 220 - 240 V 50/60 Hz

Standby power consumption: <0.5W

Power Saving Features: Auto switch-off timer, Picture mute (for radio), Eco mode, Light sensor

Accessories

Included accessories: Remote Control, Table top stand, Power cord, Quick start guide, Legal and safety brochure

Dimensions

Product weight: 17 kg

Product weight (+stand): 18 kg

Weight incl. Packaging: 22 kg

Wall mount compatible: 300 x 300 mm

TV without stand (W x H x D): 1228 x 708 x 58 mm

TV with stand (W x H x D): 1228 x 777 x 281 mm

Package carton (W x H x D): 1400 x 860 x 160 mm

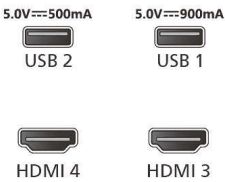
Google TV

Memory size(Flash): 64 GB

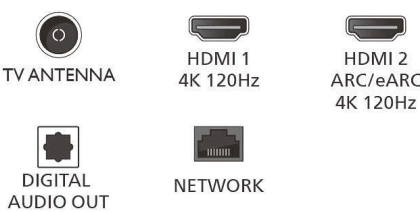
Pre-installed apps: Disney+, Apple TV, Netflix, YouTube, Amazon Prime video, Aurora, Whalefit App, NFT App

Connections

Side



Down



* Memory size (Flash) : 64GB, the actual available disc space may differ (dependent on e.g. (pre-)installed apps, installed operating system, etc.)

* Image depicted on the website are non-contractual pictures. Please always refer to the actual TV that are sold in the retail or stores.

* Philips TV Remote app and related functionalities vary per TV model, operator and country, as well as smart device model and OS. For more details please visit: www.philips.com/TVRemoteapp.

* EPG and actual visibility (up to 8 days) is country- and operator-dependent.

* Netflix subscription required. Subject to terms on <https://www.netflix.com>

* Amazon Prime is available in selected languages and countries.

* Amazon, Alexa and all related logos are trademarks of Amazon.com, Inc. or its affiliates. Amazon Alexa is available in selected languages and countries.

* Over-the-top media services button on remote control will be different per country. Please refer to the actual product in the box.

* Google Assistant is available in different languages and countries specific to product types.

* Availability and functionality of voice control services varies according to country and language.

* Google TV is the name of this device's software experience and a trademark of Google LLC.

* Google TV is the name of this device's software experience and a trademark of Google LLC. YouTube, OK Google and other marks are trademarks of Google LLC.

* Availability of Apple TV app & Apple TV+ may vary by country or region, please check support pages of Google Play and Apple Inc.

* 120Hz HDMI VRR, G-sync, and FreeSync are achievable when gaming on a PC, connected to your OLED TV via HDMI

* Images are for illustrative purpose