

PHILIPS

EVNIA

WQHD gaming
monitor

Curved Fast VA
Gaming monitor

Evnia 5000

34" (86.36 cm)

3440 x 1440 (WQHD)

34M2C5501A



Your gaming experience to the utmost

This curved Fast VA monitor allows you to game with ultimate precision and speed at 180Hz. With features such as DisplayHDR 400, curved frame, and WQHD resolution guaranteed, this monitor produces an excellent all-around gaming experience.

Features designed for gamers needs

- Stark ShadowBoost: for enhancing visibility in dark scenes
- AI-enhanced Ambiglow: for intensified entertainment
- Dynamic Lighting: Synchronize lighting on all devices.
- SmartImage game mode optimized for gamers
- Built-in stereo speakers for multimedia

Built for fast action

- 180Hz refresh rates for ultra-smooth, brilliant images
- AMD FreeSync™ Premium; tear free, stutter free, fluid gaming
- Fast VA Panel: For sharp imagery at high frame rates
- 0.5 ms ultra-fast speed for crisp image and smooth gameplay
- Low input lag reduces time delay between devices to monitor

Immersive visuals

- SmartContrast for rich black details
- CrystalClear images with UltraWide QHD 3440 x 1440 pixels

Curved Fast VA Gaming monitor

WQHD gaming monitor

34M2C5501A/00

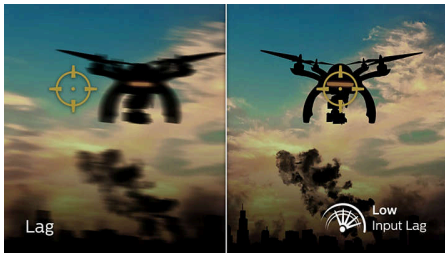
Highlights

180Hz Gaming



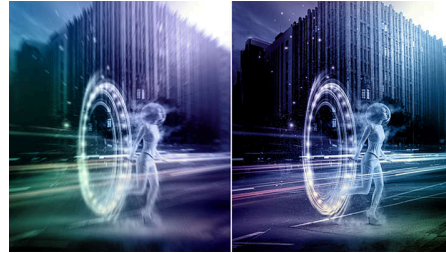
You play intense, competitive gaming. You demand display with lag free, ultra-smooth images. This display redraws the screen image up-to 180 times per second, effectively faster than a standard display. A lower frame rate can make enemies appear to jump from spot to spot on the screen, making them difficult targets to hit. With 180Hz frame rate, you get those critical missing images on the screen which shows enemy movement in ultra-smooth motion so you can easily target them. With ultra-low input lag and no screen tearing, this Philips display is your perfect gaming partner.

Low input lag



Input lag is the amount of time that elapses between performing an action with connected devices and seeing the result on screen. Low input lag reduces the time delay between entering a command from your devices to monitor, greatly improve on playing twitch-sensitive video games, particularly important to whom plays fast-paced, competitive games.

0.5 ms Smart MBR fast response



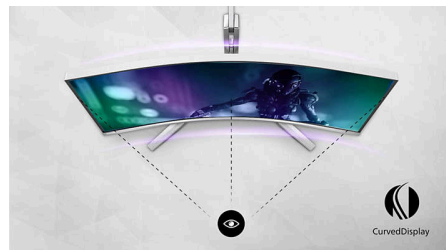
Philips Evnia with 0.5 ms Smart MBR effectively eliminates smearing and motion blur, delivers sharper and precise visuals to enhance gaming experience. Fast-moving action and dramatic transitions will be rendered smoothly. Best choice for playing thrilling and twitch-sensitive games.

Fast VA



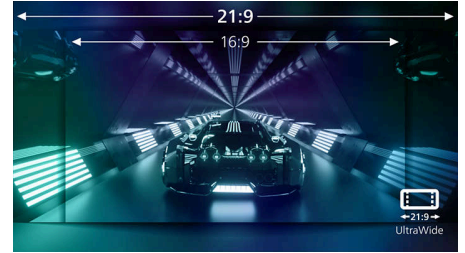
This feature is made for action-packed gameplay. Not only does it produce virtually blur-free gaming, but it also pairs well with high frame rates for the best and sharpest imagery, guaranteed.

Curved display design



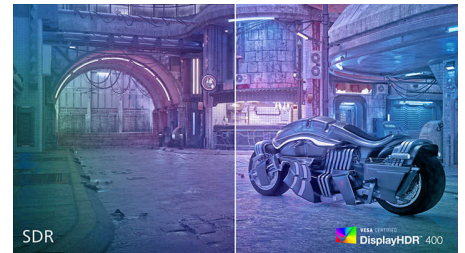
Desktop monitors offer a personal user experience, which suits a curve design very well. The curved screen provides a pleasant yet subtle immersion effect, which focuses on you at the center of your desk.

UltraWide CrystalClear images



These Philips screens deliver CrystalClear, UltraWide Quad HD 3440 x 1440 pixel images. Utilizing high performance panels with high-density pixel count, 178/178 wide viewing angles, these new displays will make your images and graphics come alive. The UltraWide 21:9 format enables more productivity with more room for side-by-side comparisons and more viewable spreadsheet columns. Whether you are demanding professional requiring extremely detailed information for CAD-CAM solutions, or a financial wizard working on huge spreadsheets, Philips displays delivers CrystalClear images.

DisplayHDR 400



VESA-certified DisplayHDR 400 delivers a significant step-up from normal SDR displays. Unlike, other 'HDR compatible' screens, true DisplayHDR 400 produces astonishing brightness, contrast and colors. With global dimming and minimum 400 nits brightness, images come to life with notable highlights while featuring deeper, more nuanced blacks. It renders a fuller palette of rich new colors, delivering a visual experience that engages your senses.



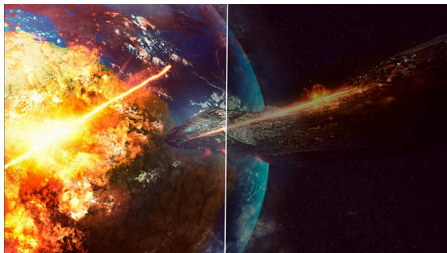
Highlights

SmartContrast



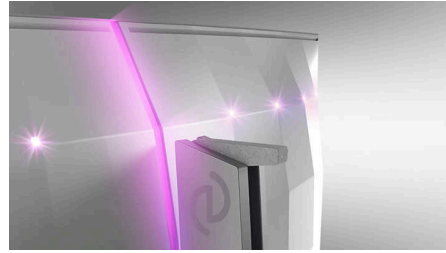
SmartContrast is a Philips technology that analyzes the contents you are displaying, automatically adjusting colors and controlling backlight intensity to dynamically enhance contrast for the best digital images and videos or when playing games where dark hues are displayed. When Economy mode is selected, contrast is adjusted and backlighting fine-tuned for just-right display of everyday office applications and lower power consumption.

Stark ShadowBoost



This feature enhances dark scenes without overexposing lightened areas. The Stark Shadowboost feature has three selectable levels that offer texturized images with better color saturation with higher contrast so you can see better in both light and dark environments. In addition, this feature helps you fine-tune your sight so that enemies get exposed more quickly when gaming.

AI-enhanced Ambiglow



Our AI-enhanced processor analyzes the incoming image content and continuously adapts the color and brightness of the emitted light to match the image. This feature adds a new dimension to your viewing experience. The innovative Ambiglow uses its AI capabilities to create a truly immersive and customizable gaming experience. From filling your gaming room with color to feeling like you are part of the game, the AI-enhanced Ambiglow is made to make your gaming experience the best it's ever been by combining intelligence, color, and light.

SmartImage Game mode



The new Philips gaming display has quick access OSD fine tuned for gamers, offering you multiple options. "FPS" mode (First person shooting) improves dark themes in games, allowing you to see hidden objects in dark areas. "Racing" mode adapts display with fastest response time, high color, along with image adjustments. "RTS" mode (Real time strategy) has a special SmartFrame mode which enables highlighting of specific area and allows for size and image adjustments. Gamer 1 and Gamer 2 enable you to save personal customized settings based on different games, ensuring best performance.

Built-in stereo speakers



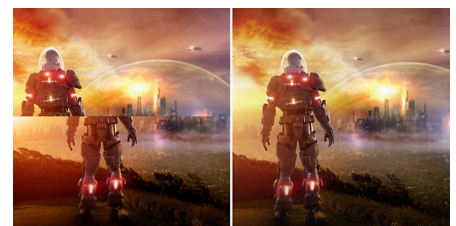
A pair of high quality stereo speakers built into a display device. It can be visible front firing, or invisible down firing, top firing, rear firing, etc depending on model and design.

Dynamic Lighting



This feature is a Microsoft certification program that enables with users Windows 11 to synchronize and manage the RGB lighting of all their monitors and peripherals from one menu. By doing this, the Dynamic Lighting feature creates a complete RGB lighting ecosystem with Philips Evnia Ambiglow across all devices that ultimately caters to a customizable user experience.

AMD FreeSync™ Premium



AMD FreeSync™ OFF (simulation)

AMD FreeSync™ ON

Gaming shouldn't be a choice between choppy gameplay or broken frames. AMD FreeSync™ Premium equips serious gamers with a fluid, tear-free gameplay experience at peak performance. There are no compromises, game confidently with a high refresh rate, low framerate compensation, and low latency.

Specifications

Picture/Display

Panel Size: 34 inch / 86.36 cm
 Aspect ratio: 21:9
 Monitor Panel Type: VA, 1500R
 Pixel pitch: 0.23175 x 0.23175mm
 Brightness: 300 nit
 Display colors: 1.07B (8 bits + FRC)
 Color gamut (typical): Adobe RGB 91%, DCI-P3:95%, sRGB: 126%, NTSC 105%.*
 Contrast ratio (typical): 4000:1
 SmartContrast: Mega Infinity DCR
 Response time (typical): 1 ms (Gray to Gray)*
 Viewing angle: 178° (H) / 178° (V), @ C/R > 10
 Picture enhancement: SmartImage game
 Maximum resolution: HDMI: 3440 x 1440 @ 100 Hz, DP: 3440 x 1440 @ 180Hz
 Effective viewing area: 797.22(H)x333.72(V)mm - at a 1500R curvature*
 Scanning Frequency: HDMI: 30k - 160kHz (H) / 48 - 100 Hz (V), DP: 30k - 275kHz (H) / 48 - 180 Hz (V)
 sRGB
 Delta E: <2 (sRGB)
 Flicker-free
 Pixel Density: 109.68 PPI
 LowBlue Mode
 Display Screen Coating: Anti-glare, 25%, 3H
 SmartUniformity: 93~105%
 Low Input Lag
 EasyRead
 AMD FreeSync™ technology: premium G-SYNC
 HDR: HDR 400 supported
 Stark Shadow Boost
 Windows Dynamic Lighting
 Smart MBR: 0.5ms*
 Smart Crosshair
 Backlight type: W-LED

Connectivity

Signal Input: HDMI 2.0 x 2, DisplayPort 1.4 x 1
 Sync Input: Separate Sync
 Audio (In/Out): Headphone out
 HDCP: HDCP 1.4 (HDMI / DisplayPort), HDCP 2.2 (HDMI / DisplayPort)
 USB Hub: USB 3.2 Gen 1 / 5 Gbps, USB-B upstream x 1, USB-A downstream x 3 (with 1 for fast charge B.C 1.2)

Convenience

Built-in Speakers: 5 W x 2
 Plug & Play Compatibility: DDC/CI, Mac OS, sRGB, Windows 11 / 10
 User convenience: Power On/Off, Menu/OK, Input/Up, Game Settings/Down, SmartImage game/Back
 OSD Languages: Brazil Portuguese, Czech, Dutch, English, Finnish, French, German, Greek, Hungarian, Italian, Japanese, Korean, Polish, Portuguese, Russian, Spanish, Simplified Chinese, Swedish, Turkish, Traditional Chinese, Ukrainian
 Other convenience: Kensington lock, VESA mount (100x100mm), VESA bracket, LowBlue Mode, FreeSync Premium
 MultiView: PIP/PBP mode, 2x devices
 Ambiglow: Ambiglow 3 sided

Stand

Height adjustment: 130 mm
 Swivel: +/- 30 degree
 Tilt: -5/20 degree

Power

Power supply: Internal, 100-240VAC, 50-60Hz
 Off mode: 0.3 W (typ.)
 On mode: 47.8 W (typ.)
 Standby mode: 0.5 W (typ.)
 Power LED indicator: Operation - White, Standby mode- White (blinking)

Dimensions

Packaging in mm (WxHxD): 980 x 525 x 226 mm
 Product without stand (mm): 808 x 369 x 69 mm
 Product with stand(max height): 808 x 434 x 311 mm

Weight

Product with packaging (kg): 11.59 kg
 Product with stand (kg): 8.61 kg
 Product without stand (kg): 6.68 kg

Operating conditions

Altitude: Operation: +12,000ft (3,658m), Non-operation: +40,000ft (12,192m)
 Temperature range (operation): 0°C to 40 °C
 MTBF: 50,000 hour(s)
 Relative humidity: 20%-80 %
 Temperature range (storage): -20°C to 60 °C

Sustainability

Environmental and energy: RoHS
 Recyclable packaging material: 100 %
 Post consumer recycled plastics: 35%*

Compliance and standards

Regulatory Approvals: CB, CE Mark, TUV/ISO9241-307, TUV-BAUART, EAC, EAEU RoHS, KC, EMC, UKCA, EMF, FCC, ICES-003

Cabinet

Color: White
 Finish: Textured

What's in the box?

Cables: HDMI cable, DisplayPort cable, USB Upstream cable, Power cable
 Monitor with stand
 User Documentation

- * Display colors: 10bits can be reached by QHD@144Hz with DP port
- * Adobe RGB and DCI-P3 Coverage based on CIE1976, sRGB Area based on CIE1931, NTSC Area based on CIE1976.
- * Radius of the arc of the display curvature in mm
- * Response time value equal to SmartResponse.
- * For best output performance, please always ensure that your graphic card is capable of achieving the maximum resolution and refresh rate of this Philips display.
- * Smart MBR is to adjust brightness for blur reduction, so cannot adjust brightness while Smart MBR is turned on. To reduce motion blur, LED backlight will strobe synchronously with screen refresh, which may cause noticeable brightness change.
- * 2020 Advanced Micro Devices, Inc. All rights reserved. AMD, the AMD Arrow logo, AMD FreeSync™ and combinations thereof are trademarks of Advanced Micro Devices, Inc. Other product names used in this publication are for identification purposes only and may be trademarks of their respective companies.
- * NVIDIA® G-SYNC® support interface: DisplayPort
- * Make sure to update NVIDIA® G-SYNC® driver to the latest version, see more information on NVIDIA website: <https://www.nvidia.com/>
- * Make sure your graphic card supports NVIDIA® G-SYNC®
- * Smart MBR is gaming-optimized mode. Turn on Smart MBR may cause noticeable screen flickering. It is recommended to turn off when you are not using the gaming function.
- * This monitor strives for sustainability: the base cover and headphone holder are made with 35% recycled plastic.
- * The products and accessories listed on this leaflet may differ by country and region.
- * The monitor may look different from feature images.

