

PHILIPS

DreamMapper

Getting started on DreamMapper

Take charge of your sleep therapy

Step 1 Download the DreamMapper app



Scan the QR
code or search
DreamMapper in
your app store



Download on the
App Store



GET IT ON
Google Play

Step 2 Register your DreamMapper account

- Open the app and tap **Create Account**. Enter the required information, accept the Terms and Privacy notice, tap **Register**. Note: your email address will be your username.
- Choose a password to meet the requirements, then tap **Create Account**. Choose which consents you would like to agree to, then tap **Let's get started!**

Register

Name

First name*

Last name*

Contact information

Email*

Confirm email*

Phone

Country

United States

DSN (Device Serial Number)

Enter number

☐ I understand and accept the [Terms and Conditions](#).

☐ I agree for my personal data to be processed in the DreamMapper App for creating my account and user profile and to provide a view of usage of my therapy device (s) to assist me with complying with my sleep therapy goals. Please review the attached [Privacy Notice](#) for more detailed information on what personal data we



Register

Username

philips@email.com

Create Password

Password

Confirm Password

Passwords must have:

- 8-20 characters
- Upper & lower case letters
- Special characters
- Numbers
- Password cannot contain your email address or the word 'password'

Create Account



Help us improve

Acknowledge all consents ☒

Cookies and analytics

I want to share my app analytics data to improve app functionality.

[What does this mean?](#)

In app marketing

It is OK to send me marketing advertising via app notifications - I can change this in my preferences anytime.

[What does this mean?](#)

Out of app marketing

I would like to receive email communications, including advertisements and marketing, about Philips products, services, events and promotions.

[What does this mean?](#)

Research and app improvement

I agree that my de-identified data can be used to help improve the App, device and to develop new products and services.

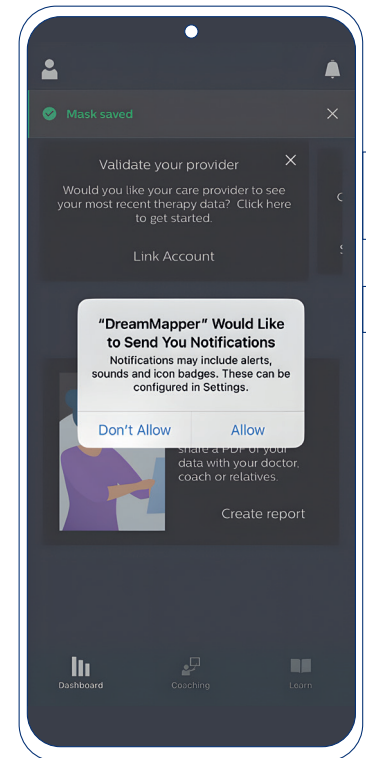
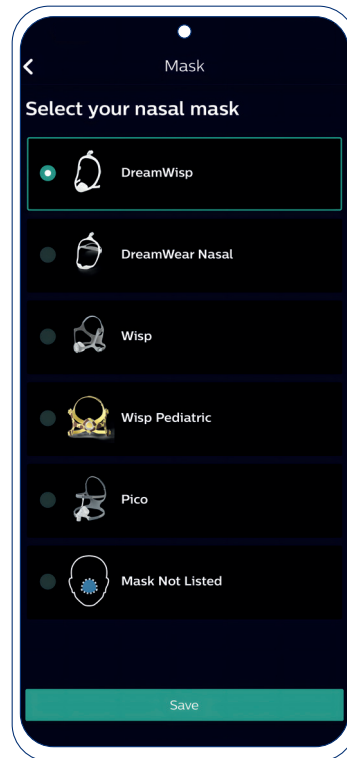
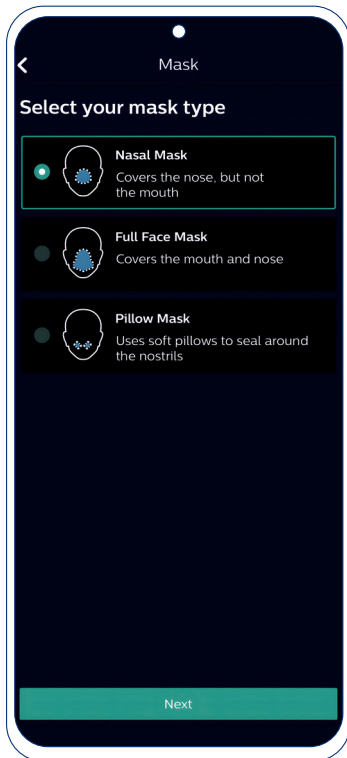
[What does this mean?](#)

Privacy marketing

Let's get started!

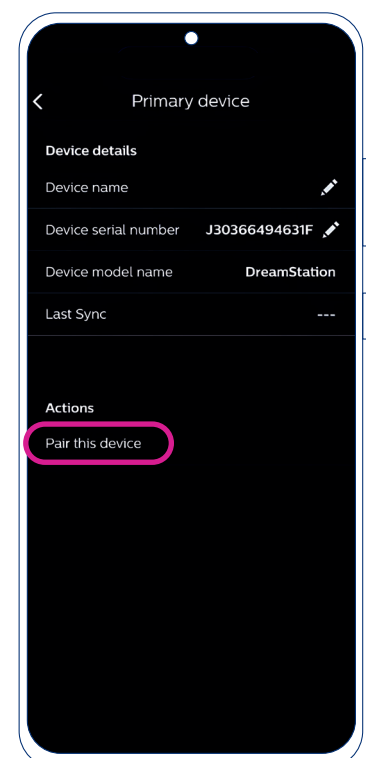
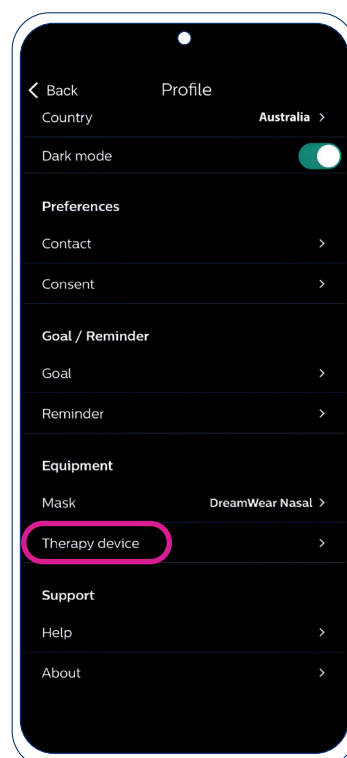
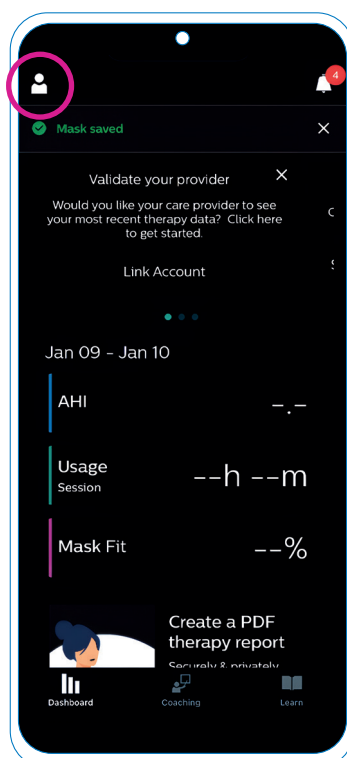
Step 3 Customise your account

- a. Choose your mask type. Confirm by tapping **Next**. Choose your mask, and tap **Save** to proceed.



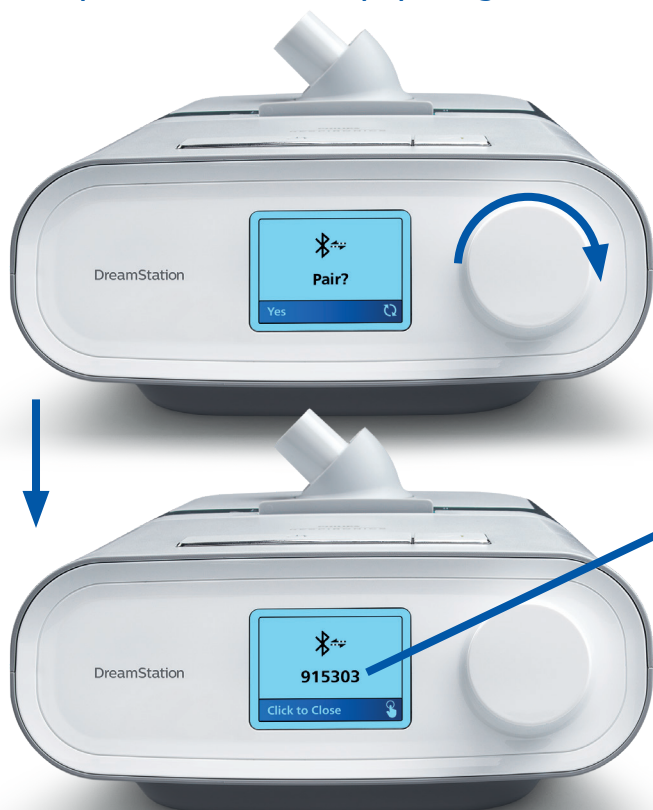
Step 4 Bluetooth pairing for DreamStation

- a. Tap the icon  in the top left of the screen to enter the **Profile** menu.
- b. Scroll down and tap **Therapy device**, then tap your device serial number.
- c. Tap **Pair this device** making sure to **Allow Bluetooth** permissions when prompted.

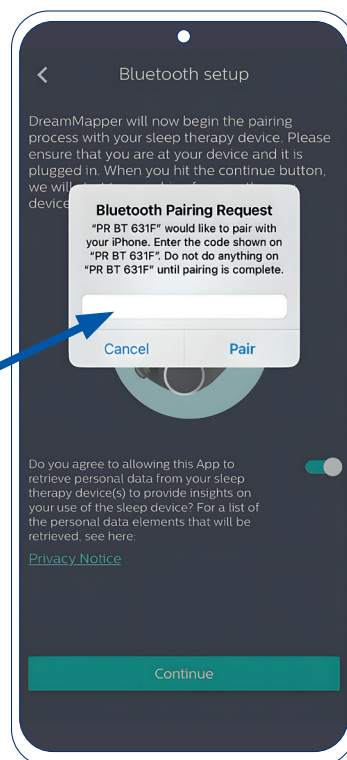


Note: For Android devices, ensure to also Allow DreamMapper to locate nearby devices.

- d. On the DreamStation, turn the dial to **Yes** and push the dial to accept pairing.

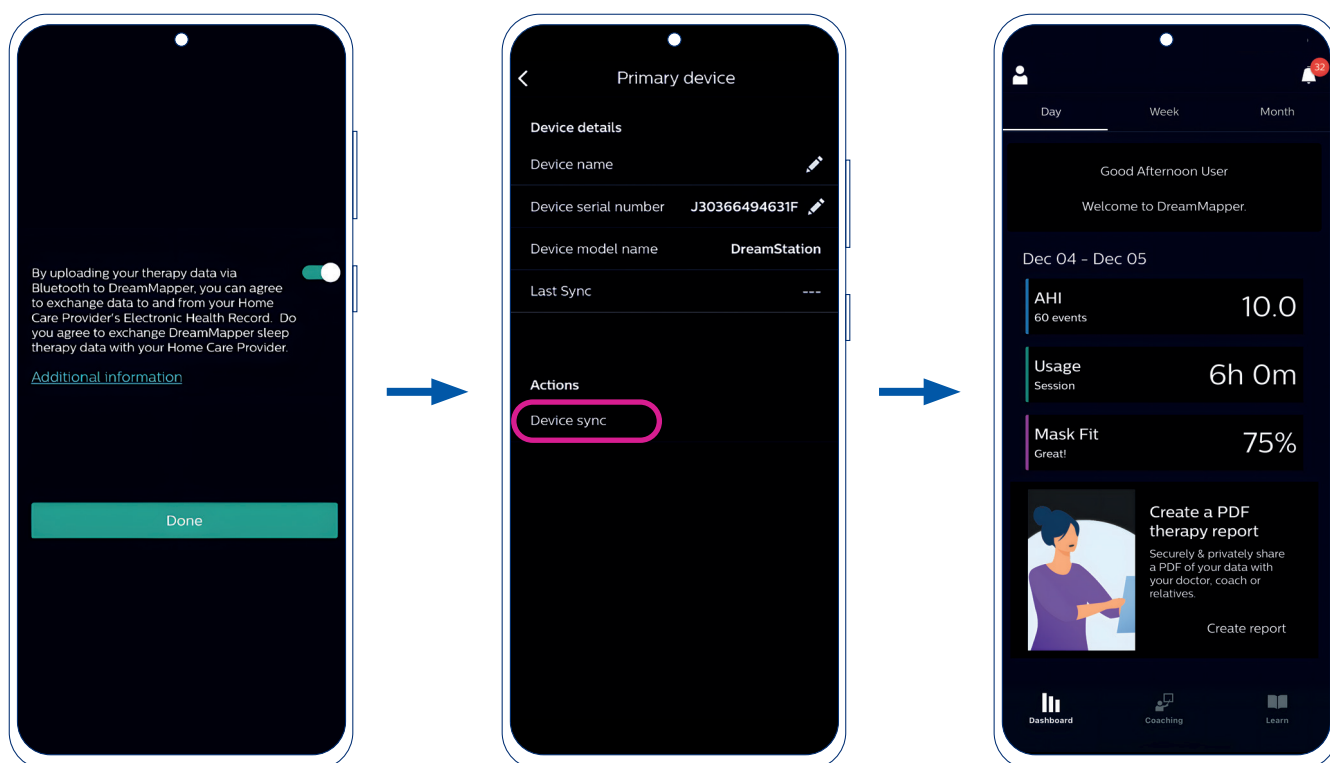


- e. Enter the code displayed on the DreamStation into the DreamMapper **Bluetooth Pairing Request** prompt on the app. Tap **Pair**.



Step 5 Consent to share and sync your therapy data

- a. Once complete, you should see a green tick. Tap the slider to green to choose to allow your therapy provider access to your therapy progress, before tapping **Done**. Then tap **Device sync**.
- b. Wait a moment for DreamMapper to sync your data. Once complete, you can navigate back to the main screen using the back arrow to view your data.



Note: If you choose to allow your therapy provider access to your therapy data, you will need to supply them your device serial number and email address. They can then email you a PIN code to enter into DreamMapper to complete the link.

To learn more about DreamMapper visit philips.com.au/DreamMapper

For technical support email dreammapper.support@philips.com or call Philips (toll-free) at **1800 830 517** (Monday to Friday 9am - 5pm AEST).

© 2025 Koninklijke Philips N.V. All rights reserved.
Specifications are subject to change without notice.
Trademarks are the property of Koninklijke Philips N.V.
or their respective owners.

00000752-00-02

Version: ANZ01/2025



Philips Sleep and Respiratory Care
65 Epping Road
North Ryde, NSW, 2113
Australia

www.philips.com.au/DreamMapper

Telephone: 1800 830 517 (toll-free)