

**PHILIPS**

**EasyKey**

6000 series

Smart lever door lock

DDL615-5HBS

# User manual

Register your product and get  
support at [www.philips.com/support](http://www.philips.com/support)





# Contents

---

<b>1. Important Information</b>	02	<b>6. Other features</b>	14
Safety		Factory reset	
Caution		Doorbell	
Disposal of used locks and batteries			
<hr/>		<hr/>	
<b>2. Assembly</b>	03	<b>7. Indicators</b>	15
Included Items		Lock status indicator	
Exploded views		Low battery indicator	
Notice before assembling		System locking indicator	
Adjustable latch instructions			
Assembly steps			
<hr/>		<hr/>	
<b>3. Get to know your lock</b>	08	<b>8. Troubleshooting</b>	16
Exterior assembly		Alert types	
Interior assembly		How to apply external power source	
		Battery replacement	
<hr/>		<hr/>	
<b>4. Settings</b>	09		
Instructions before setting			
Smart lock activation			
APP download			
Add a door lock			
Add a unlock method			
<hr/>		<hr/>	
<b>5. Start using your lock</b>	11		
Outdoor/ indoor unlock			
Outdoor/ indoor lock			
Indoor lockout			
Mechanical key			

---

# 1. Important information

---

## Safety

- ◆ Before using this product, please carefully read through and understand all instructions. Damage resulting from failure to follow these instructions is not covered by the warranty.
- ◆ Please only use the accessories/components specified by the manufacturer.
- ◆ Please only use alkaline batteries/lithium polymer batteries provided with this product, or batteries of the same specification/type.
- ◆ Please do not attempt to forcibly disassemble the product to trigger an alert or cause damage.
- ◆ Please avoid using sharp objects to scrape the fingerprint sensor, as this may result in permanent damage.
- ◆ Please avoid exposing the product to areas where water may leak or splash.
- ◆ To prevent damage to the protective cover, do not expose the product to corrosive substances.
- ◆ Please avoid hanging objects on the handle as it may interfere with the functioning of the lock.
- ◆ Please use a soft, damp cloth to wipe fingerprints or dirt from the assembly surface.
- ◆ Please do not remove the batteries while setting up or operating the product.
- ◆ Please select professional personnel for door lock installation and follow the installation instructions provided by our company. Do not disassemble the door lock and ensure that the relevant sealed stickers are properly kept.
- ◆ After completing the installation and troubleshooting, please change the default master PIN code immediately. Ensure that the mechanical keys are stored properly and do not share the PIN codes with others.
- ◆ After the door lock triggers a low battery alert, promptly replace all batteries and ensure correct polarity during installation.

## Caution

- ◆ Do not place the batteries near sources of ignition to prevent explosions.
- ◆ Do not use any power source that does not meet safety requirements to power the product.
- ◆ Please avoid short-circuiting the battery's polarity with metal objects to prevent explosions.
- ◆ Please ensure that installation or any component replacement is carried out by Philips, a Philips authorized service center, or professional technicians.
- ◆ Please refrain from using accessories or components made by unauthorized manufacturers or not explicitly recommended by Philips. Using such accessories and components may void the warranty.

## Disposal of used products and batteries

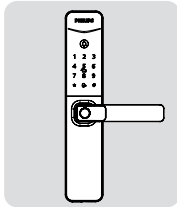
- ◆ You can have your products taken back at authorized Philips service centers. You may receive appropriate compensation if your products meet our refund conditions.
- ◆ Please check local regulations for the proper disposal and separate collection of used batteries and products. Proper disposal helps protect the environment and human health. Please be aware that batteries should not be discarded with regular household waste.

## 2 Assembly

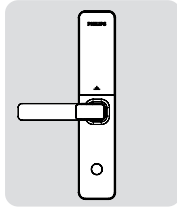
---

### Included items

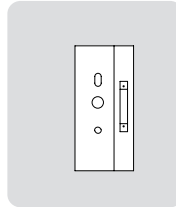
This included item list is for reference only. Please refer to the actual packing items.



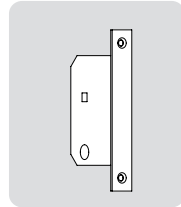
① Exterior assembly with silicone pad



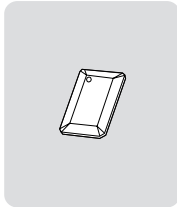
② Interior assembly with silicone pad



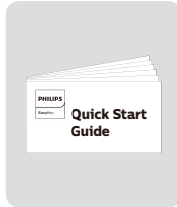
③ Drilling template



④ Mortise



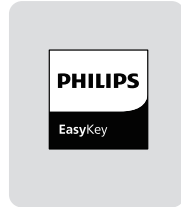
⑤ Key tag



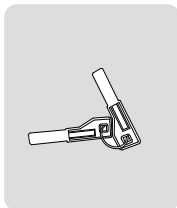
⑥ QSG



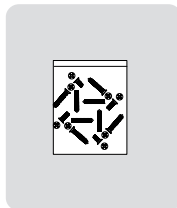
⑦ Warranty card



⑧ Quality certificate

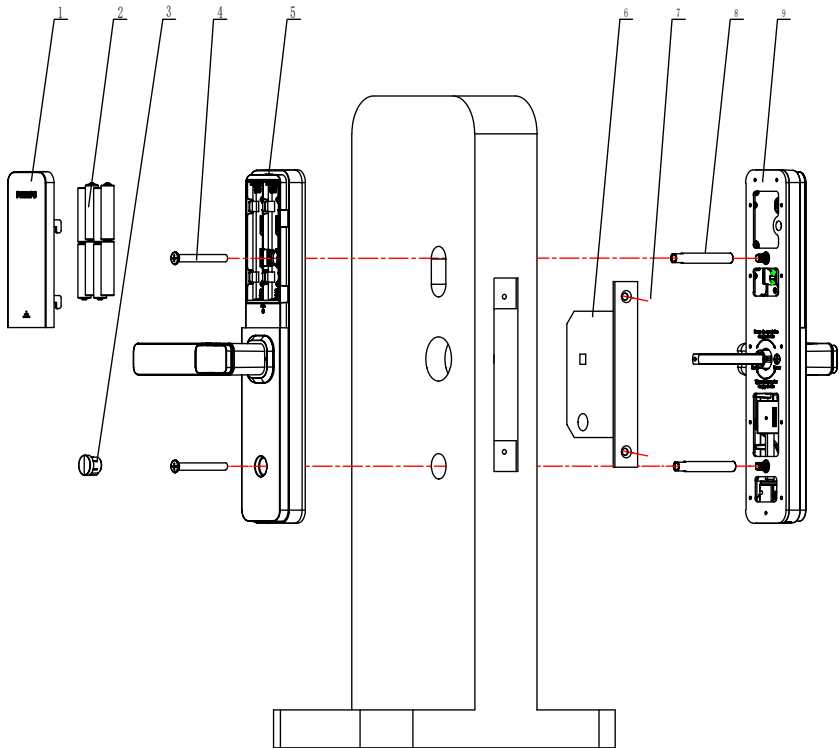


⑨ Mechanical key



⑩ Installation kit

## Exploded views



1. Battery cover ×1

2. Battery ×8

3. Silicone cap ×1

4. M6 anchor screw ×2

5. Interior assembly ×1

6. Mortise ×1

7. Anchor screw ×2

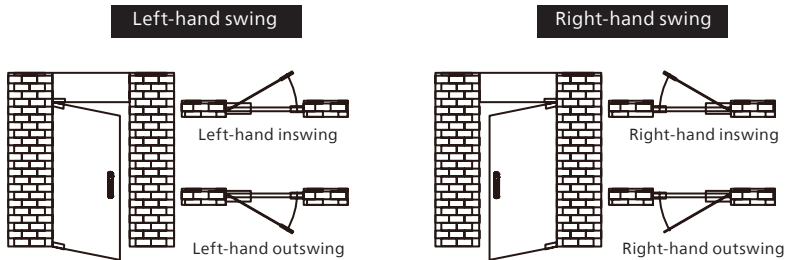
8. M6 screw sleeve ×2

9. Exterior assembly ×1

## Notice before assembling

### Step 1 | Check the door-swing direction

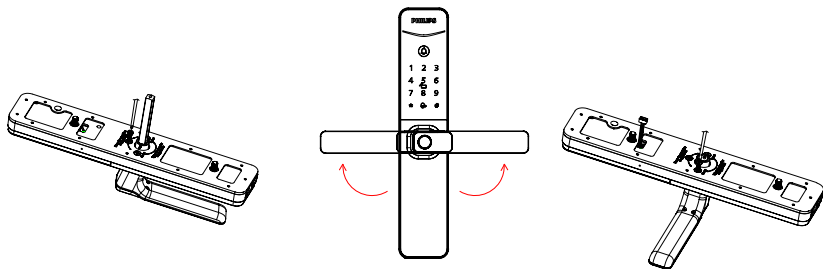
This product applies to doors with swing directions as follows: left-hand inswing, left-hand outswing, right-hand inswing, and right-hand outswing.



#### ⚠ Attention

Please choose the appropriate installation kit according to the thickness of the door.

### Step 2 | Adjustable latch instructions



1 Break the label at the "+" mark and unscrew the screw.

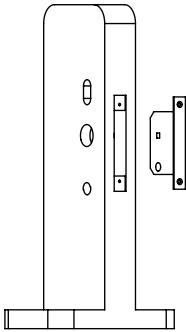
2 Rotate the lever 90° to the correct position.

3 Break the left/right "+" marked area and tighten the screw.

## Assembly steps

The following assembly steps apply to the right-hand swing doors. For left-hand swing doors, please read through the [Notice before assembling] and adjust the latch direction first.

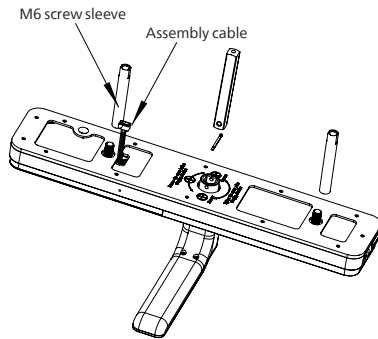
- 1 To drill holes in the door according to the drilling template, mount the mortise into the jamb, and secure the screws.



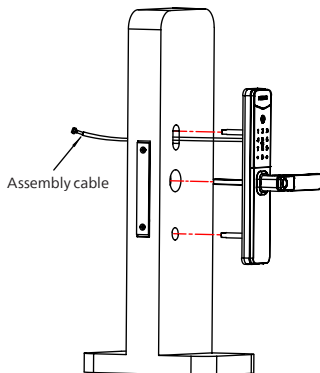
### ⚠ Attention

Please ensure the latch bolt does not protrude during installation.

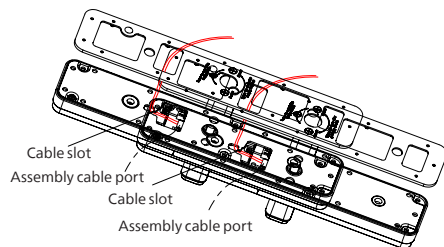
- 2 Install the M6 screw sleeves onto the exterior assembly, and insert the square shaft in the square shaft housing, then align the small holes on the square shaft with the holes in the housing, insert the split pin, and bend both ends of the pin to secure the square shaft.



- 3 Pass the assembly cables through the door hole, align the exterior assembly to closely fit against the door.

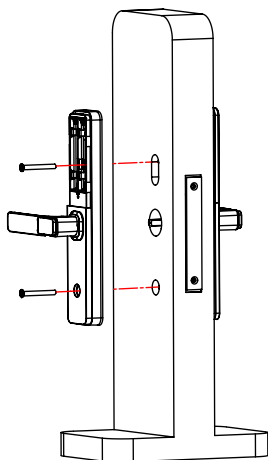


- 4 Insert the assembly cables into the interior assembly and secure them in the cable slot.

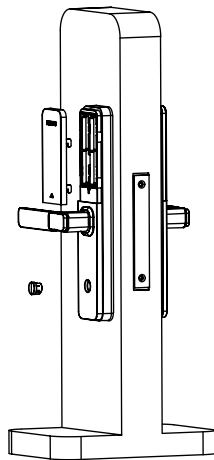




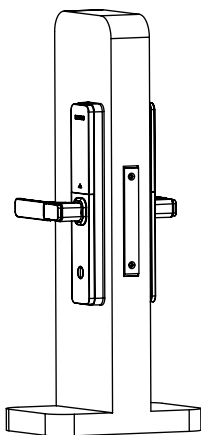
- 5 Attach the interior assembly, and secure it with M6 anchor screws.



- 6 Insert the silicone cap, install the alkaline batteries, cover with the battery cover, then the assembly is done.

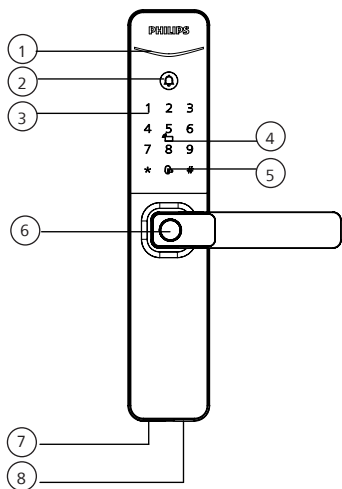


- 
- 7 Check all components for proper connection and functionality.



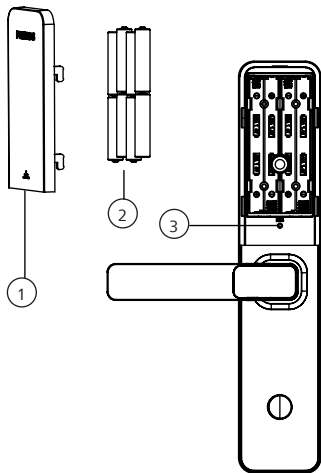
# 3 Get to know your lock

## Exterior assembly



①	Status indicator
②	Doorbell
③	Keypad
④	Key tag reader
⑤	Mute button
⑥	Fingerprint sensor
⑦	Type-C interface
⑧	Keyhole

## Interior assembly



①	Battery cover
②	Alkaline batteries
③	RESbutton

# 4 Settings

## Instructions before setting

◆ The system modes include the general mode and dual verification mode.

General mode	Door can be opened using any enrolled unlock method.
--------------	------------------------------------------------------

Dual verification mode	Door can be opened using any two combinations of fingerprint, PIN code, or key tag.
------------------------	-------------------------------------------------------------------------------------

### ◆ User number

You can delete a user's information by the user number without having to delete everything. You can record the user information in the following table for easy management and future reference.

No.	Name	Fingerprint	PIN code	Key tag
00				
01				
02				
03				
04				
05				
06				
07				
08				
09				

### ◆ Icon annotation



### ⚠ Attention

1. When navigating the menu, to return to the previous menu, press the [\*] key.
2. The default PIN code is 12345678.
3. Capacity: 1 set of master PIN code, 100 sets of fingerprints (including 1 set of master fingerprint), 20 sets of user PIN codes, and 100 sets of key tags.

## Smart lock activation

- ①Wake up the keypad;
- ②Tap the [\*] key twice, enter the activation code, and tap [#] to confirm and activate the lock.



### ⚠ Attention

- 1.The lock will default to demo mode when inactive. In demo mode, users can experience the basic features of the product.
- 2.For the activation code, please consult your distributor, retailer, or installation service provider.

## Add a unlock method

- 1.Keep the lock and phone within 1 meter;
- 2.Follow the app prompts to set up an unlock method.

## APP download

Scan the QR code below or search for "Home Access" in your app store to download and install.



## Add a door lock

- 1.Insert the batteries;
- 2.Turn on Bluetooth on your phone, open the app, tap "Add a device" on the homepage, and follow the instructions to pair.

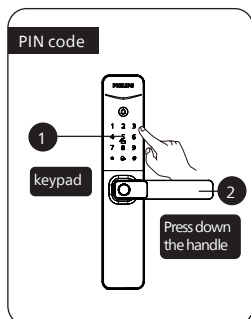
### ⚠ Attention

- 1.The default PIN code is 12345678.

# 5 Start using your lock

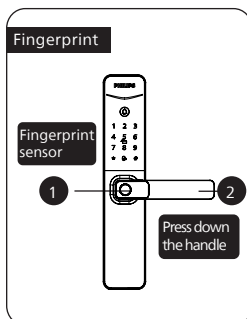
## Outdoor/ indoor unlock

### Outdoor unlock



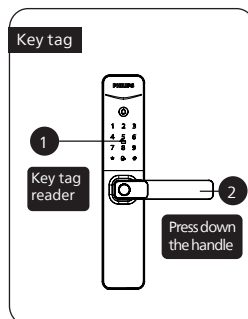
① Touch to wake up the keypad, enter the enrolled PIN code, and press the [#] key to confirm.

② When you hear the voice prompt 'Verification succeeded, please open the door,' simply press down the handle to unlock.



① Place the enrolled finger correctly on the fingerprint sensor.

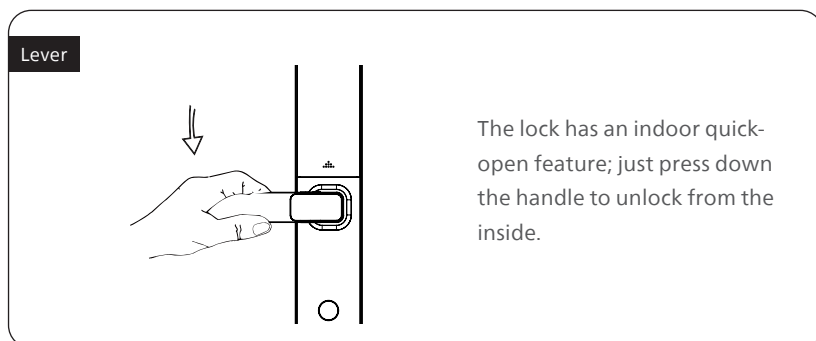
② When you hear the voice prompt 'Verification succeeded, please open the door,' simply press down the handle to unlock.



① Place the enrolled key tag properly on the key tag reader.

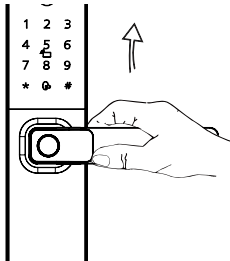
② When you hear the voice prompt 'Verification succeeded, please open the door,' simply press down the handle to unlock.

### Indoor unlock



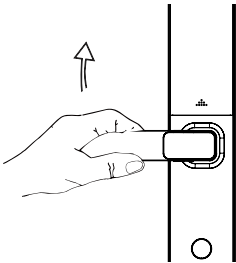
# Outdoor/ indoor lock

## Outdoor lock



After closing the door, lift the handle to extend the latch bolt and lock the door.

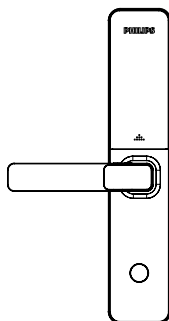
## Indoor lock



After closing the door, lift the handle to extend the latch bolt and lock the door.

## Indoor lockout

---



**Please enable the indoor lockout mode via the app.**

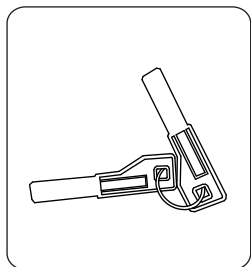
**Lockout mode enabled:** Limits outdoor unlock methods for regular users, allowing access only with master unlock methods and a mechanical key.

**Lockout mode disabled:**

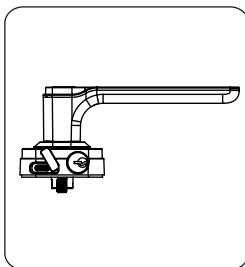
1. Disable via the app;
2. Unlocking the door using any of the master unlock methods master PIN code, master fingerprint, or master key tag will deactivate the indoor lockout mode.

---

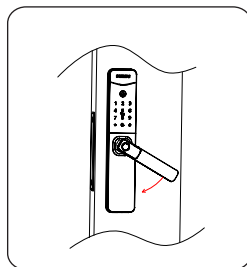
## Mechanical key



① Get the mechanical key from the product package.



② Insert the key into the keyhole at the bottom of the exterior assembly and rotate it to unlock.



③ Press down the handle to unlock.

### Attention

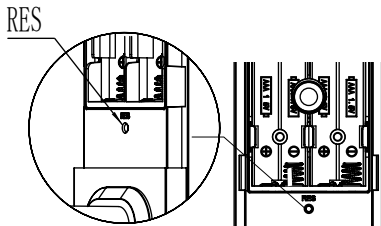
1. Avoid using the mechanical key regularly. Only resort to it in emergencies such as drained battery, forgotten PIN code, or system malfunctions. 2. Store the mechanical key outside your home, ideally in the office, car, or a secure location, for easy access during emergencies.

## 6 Other features

---

### Factory reset

---

**Function:**

Empty all user data and restore to default settings.

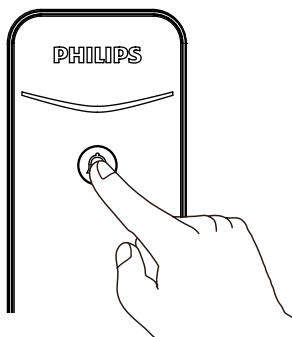
**How to use:**

Double-press the [RES] button with a sharp object, which will erase all user information and restore the lock to its default settings.

---

### Doorbell

---

**Function:**

The indoor speaker plays a ding-dong sound, informing that someone is at the door.

**How to use:**

When the doorbell is pressed, the indoor speaker will emit a ringing sound.

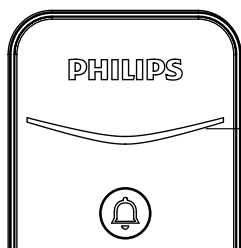
**⚠ Attention**

1. Upon pressing the doorbell, the indicator will light up in blue and flash.
2. The 'Do Not Disturb' mode can be set via the app. Once set, pressing the doorbell will not emit any sound indoors.



# 7 Indicators

## Status indicator



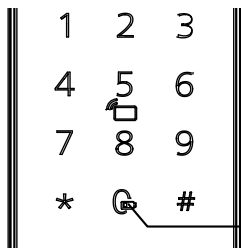
Status indicator

**Blue:**when the system wakes up, the indicator turns blue, indicating that the door lock is ready for operation.

**Green:**when the door lock is unlocked, the indicator turns green, indicating that the door has opened.

**Red:**when the door lock is locked, the indicator turns red, indicating that the door has closed.

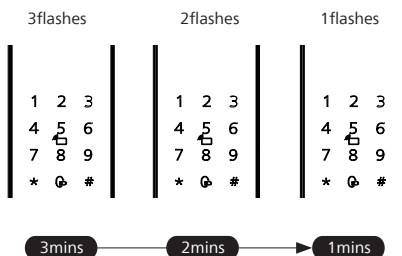
## Low battery indicator



Low battery indicator

**Red:**when the door lock is activated, it automatically checks the battery voltage. If the voltage is low, the low battery indicator will light up red and flash.

## System locking indicator



If there are five consecutive incorrect attempts within five minutes using fingerprint, PIN code, or key tag, the door lock will be locked for 3 mins.

### Attention

Prompts will only appear upon touching to wake up the keypad or when verifying unlock methods.

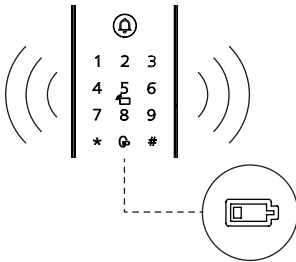
# 8 Troubleshooting

---

## Alert types

### Low battery alert

---



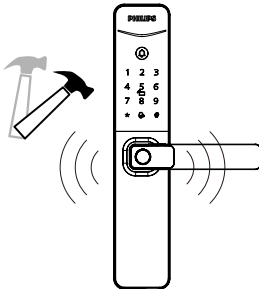
**Triggering:** when the system awakens, it will automatically check the battery voltage. If the voltage is low, an alert will prompt you to replace the batteries.

**Alert method:** the indicator will turn red. Off: the alert will be off automatically.

**Off:** the alert will be off automatically.

### Tamper alert

---

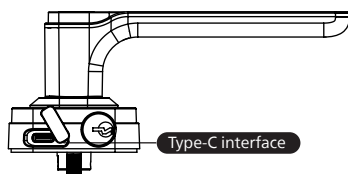


**Triggering:** the exterior assembly has been pried open and is not properly aligned with the door.

**Alert method:** continuous, repeated alert sound.

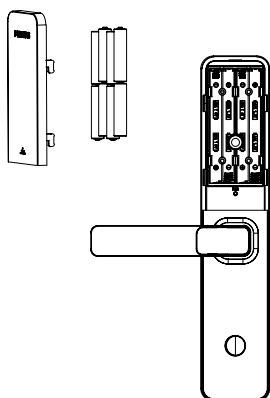
**Off:** the alert will turn off automatically, upon a successful outdoor unlock or unlocking from the inside.

## How to apply external power source



If the battery is low and the door cannot be unlocked from outside, connect a 5V power bank to power the lock. After unlocking, promptly replace the batteries. If the system malfunctions and prevents access, connecting a 5V power bank will also power the lock and automatically restart the system.

## Battery replacement



The door lock is powered by four AAA alkaline batteries. The compartment supports up to eight batteries, offering extended battery life and minimizing the frequency of replacements.



Philips and the Philips Shield Emblem are registered trademarks of Koninklijke Philips N.V. and are used under license. This product has been manufactured by and is sold under the responsibility of Shenzhen Conex Intelligent Technology Co., Ltd., and Shenzhen Conex Intelligent Technology Co., Ltd. is the warrantor concerning this product.