

# PHILIPS



## Series 9000

### All-in-One Trimmer

18 pieces: face, head & body  
Precision trimming guard  
Self-sharpening steel blades  
Premium stainless steel handle



MG9515/15

## Stainless steel precision

For a perfect beard, hair and body trim

Craft your personal look with this premium stainless steel trimmer, which includes 18 quality tools and accessories for styling your face, head and body. The precision trimming guard delivers a precise trim at the exact length you want.

#### Ultimate precision for an even trim

- 5x more precision steps for an even trim\*\*
- Long lasting performance for precise results
- A trimmer that adjusts to your beard

#### Versatile styling for face, head and body

- Get an even trim and sharp edges
- Get the details right
- 18 tools & accessories
- 30% faster hair trimming\*
- Say goodbye to body hair

#### Quality & Ease of use

- Trimmer runs 4 weeks on a single charge\*
- Water-resistant for convenient use and easy cleaning
- Premium stainless-steel handle
- Store it and stay organized

# All-in-One Trimmer

Series 9000

MG9515/15

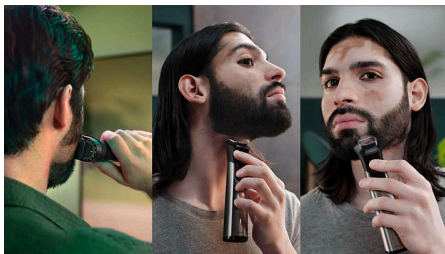
## Highlights

### 18 tools & accessories



This all-in-one trimmer offers 18 tools and accessories for all your grooming needs. Conveniently trim and style your facial hair, clip your hair and groom your body.

### Precision beard styling



The trimmer and its multi-guard set offer 23 length settings from 0.5 to 20 mm in up to 0.2 mm precision steps for shorter and longer beard styles. The narrow design of the precision trimmer attachment makes it easy to create sharp edges and fine details. The precision shaver attachment cleans up cheeks, chin and neck to finish your look.

### Comfortable body grooming



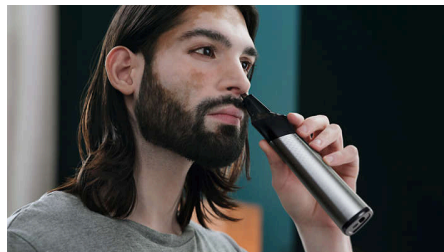
Shave comfortably below the neck with our body shaver attachment. A unique skin-protection system guards sensitive areas while you shave as close as 0.5 mm. You can also efficiently trim body hair with the click-on guards (3 mm, 5 mm).

### Fast hair clipping



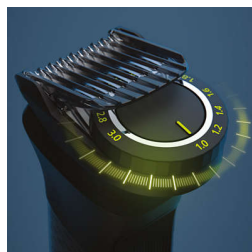
Hair trimming is 30% faster\* thanks to an extra-wide 41 mm stainless steel hair clipper that cuts more with every stroke.

### Nose/ear/eyebrow trimming



The nose/ear trimmer attachment removes unwanted nose and ear hair quickly and safely. Easily keep your eyebrows neat and tidy with the dedicated eyebrow comb.

### Precision trimming guard



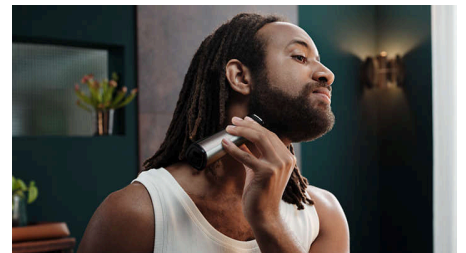
Select length settings in 0.2 mm steps from 1 to 3 mm for a precise trim to the exact length you want.

### Self-sharpening steel blades



Stainless steel blades remain sharp as day one for long lasting performance. No oil required.

### BeardSense technology



The smart trimmer scans the beard density 125x per second and boosts power exactly when you need it to tackle also dense, bushy or longer beards.

### Up to 6 hours of runtime



The trimmer's powerful lithium-ion battery provides up to 120 minutes of runtime with 5-minutes quick charge option for long life and maximum power.

# All-in-One Trimmer

Series 9000

MG9515/15

## Highlights

### 100% showerproof



The trimmer is water resistant, so you can use it comfortably in the shower and clean it easily under the tap.

### Premium ergonomic design



High-quality handle made of stainless steel with a rubber insert for first-class comfort and control.

### Premium travel case



The premium travel case keeps everything together at home or on the go.

## Specifications

### Power

**Run time:** Up to 120 minutes

**Charging:** 60 minutes, 5-minutes quick charge

**Battery type:** Lithium-ion

**Maximum power consumption:** 5 W

**Input voltage:** 5 V

**Charging method:** USB-A (no adapter included)

### Design

**Handle:** Stainless steel body, Ergonomic rubber grip

### Service

**2-year warranty**

### Ease of use

**Display:** Battery indicator

**Maintenance free:** No blade oil required

**Wet & Dry:** 100% shower proof

**Operation:** Cordless use only

### Versatile styling

**Tools & accessories:** 18

**Styling tools:** Steel trimmer, Steel precision trimmer, Precision shaver, Nose and ear trimmer,

Extra-wide hair trimmer, Body shaver, Precision trimming comb, 9-13 mm adjustable comb, 16-20 mm adjustable comb, 2 body combs, 3 beard combs, 3 wide hair combs

**Accessories:** Premium travel case, Cleaning brush

### Precise trim

**Cutting performance:** Self-sharpening steel blades, BeardSense technology

**Precision trimming:** Precision trimming comb

**Length settings:** 23 (0.5 - 20 mm)

**Precision steps:** Up to 0.2 mm

