

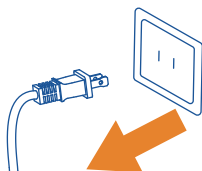
**PHILIPS**

ADD6926

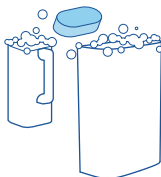
# How to use



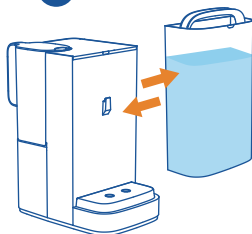
- 1 Plug** the device into a power outlet



- 2 Wash** the jug and tap water tank



- 3 Fill** the tap water tank



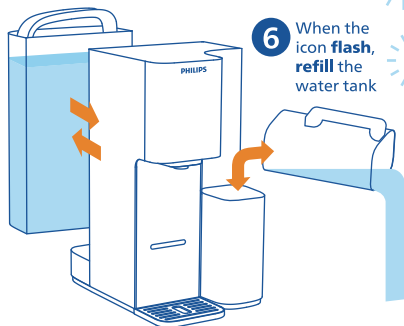
- 4 Long press** 24oz + 32oz



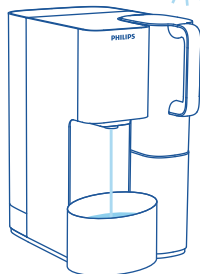
- 5** When "30" flash in the panel, **empty** the jug



- 6** When the icon flash, **refill** the water tank



- 7** When "90" flash in the panel



- 8 Place** container (min. 70oz)

- 9 Press**



# Precautions

## First Time Use

- For first time use, or if the machine hasn't been used for a long time, fill the tap water tank and discard **all** the filtered water.
- For first time use, when air passes the high-precision filter elements, micro bubbles are generated causing the water in the pure water jug appears white and cloudy. This is a normal phenomenon.
- For the first time use, TDS value **will** be displayed 3 minutes after powering on.

## Daily Use

It is recommended to discard the filtered water if the machine hasn't been used for over 24 hours.

## Precautions when not in use

If the product **will** not be used for over one week, please empty the tap water tank and the filtered water jug, then disconnect the dispenser from power supply. Seal the filter cartridge and store it in the refrigerator (35-40 °F, do not put it in the freezer). When you use it again, **please follow** the cleaning procedures for first time use

## Descale every 3 months

It is recommended to descale the tap water tank every 3 months to avoid serious scaling in the tap water tank. Please refer to the user manual for the descaling procedures.

## Cleaning every week

It is recommended to clean the tap water tank and the filtered water jug with a brush at least once per week.

\* Please buy the cleaning brush yourself

## Reverse Osmosis Filter Cartridge ADD583

