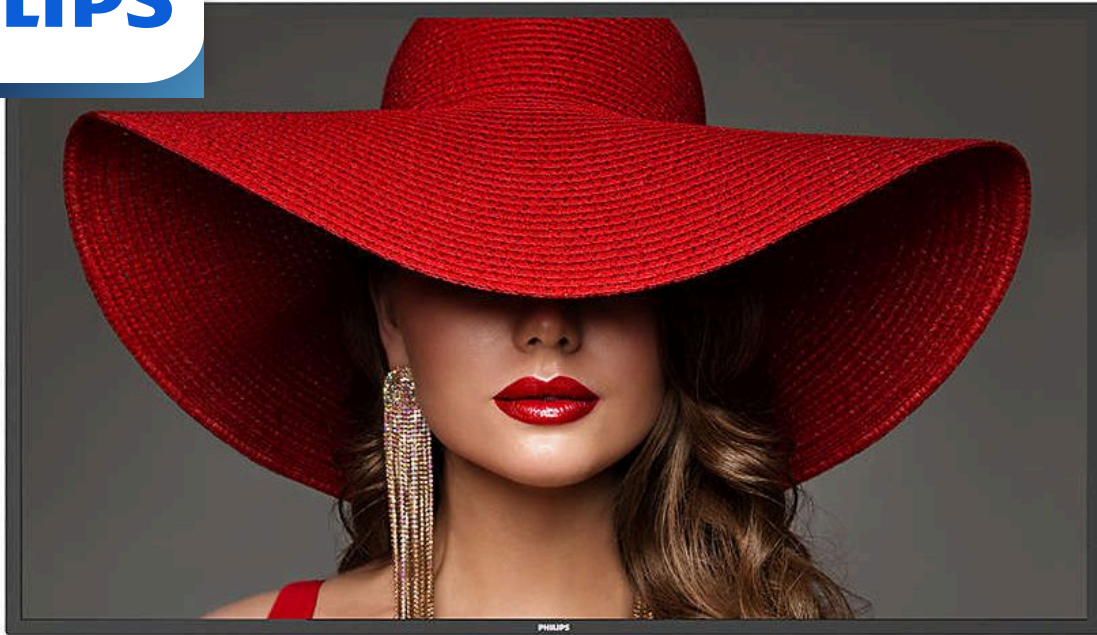


PHILIPS



D-Line Display

Signage Solutions

43"

Powered by Android

500cd/m²



43BDL4650D

Smart and modular for an even longer lifetime powered by Android

Philips D-Line is designed to engage your audience and delight customers. Powered by Android 11 for easy software integrations, this versatile display is suitable for impact in any setting.

Expand your viewing experience

- ADS wide-view panel display

Innovative solutions for any signage application

- Save and play content with internal memory
- Android SoC processor. Native and web apps
- Integrated WiFi 6 and Bluetooth module

Care about you, your business and your audience

- 4G/LTE optional module for reliable connection
- Modularity - longer product lifetime
- FailOver. Ensure your display never goes blank

Maximizing the impact of your message

- Connect and control your content via the cloud
- Catch the Wave for revolutionary results

Highlights

Internal Memory



Save and play content with internal memory. Upload your media into the display and playback content immediately. Working in conjunction with the internal browser, it also serves as a memory cache when streaming online content. If the network ever fails, the internal memory keeps content running by playing a cached version of the content, ensuring that your media stays up even if the network goes down.

ADS wide-view panel display

Be seen from any angle with ADS wide-view technology. Advanced Super Dimension Switch delivers faster on-display picture processing for smoother content transitions, remarkable image accuracy, and superior colour reproduction with 180 degree viewing.

FailOver

Critical for demanding commercial applications, FailOver is a revolutionary technology that automatically plays back-up content on screen in the unlikely event of a media player failure. Simply select a primary input connection and a FailOver connection and you are ready for instant content protection.

Modularity

Extend your display into the future with our modular approach. Bringing opportunities for longer product lifetime with easily detached and replaced components, and a firm focus on sustainability, with reduced WEEE disposal.

Powered by Android 11

Powered by Android 11 and with integrated WiFi, your Philips D-Line delivers the ultimate, most secure and connected display experience. Optimised for native Android apps, and enabling

you to install web apps and software directly onto the display, eliminating the need for an external media player.

SmartBrowser

Connect and control your content via the cloud with our integrated HTML5, Chromium-based browser. Design your content online and connect a single display, or your entire network, either landscape or portrait, in 4k UHD resolution. Simply connect to the internet via WiFi or with an RJ45 cable.

PPDS Wave

Unlock the power, versatility and intelligence inside your Philips D-Line displays remotely with Wave. This evolutionary cloud platform puts you fully in control, with simplified installation and set-up, monitoring and controlling displays, upgrading firmware, managing playlists and setting power schedules. Saving you time, energy and environmental impact.

Specifications

Picture/Display

Diagonal screen size (metric): 108.0 cm
Diagonal screen size (inch): 42.5 inch
Aspect ratio: 16:9
Panel resolution: 3840 x 2160
Pixel pitch: 0.2451 x 2451 mm
Optimum resolution: 3840 x 2160 @ 60Hz
Brightness: 500 cd/m²
Display colors: 1.07 Billion
Contrast ratio (typical): 1200:1
Dynamic contrast ratio: 500,000:1
Response time (typical): 8 ms
Viewing angle (horizontal): 178 degree
Viewing angle (vertical): 178 degree
Picture enhancement: 3/2 - 2/2 motion pull down, Motion compens. deinterlacing, Dynamic contrast enhancement, Progressive scan
Panel technology: ADS
Operating system: Android 11
Haze: 25%

Connectivity

Audio output: 3.5mm jack
Video input: DVI-I (x 1), DisplayPort 1.4 (x1), HDMI 2.0 (x2), USB 3.0 (x2), VGA (via DVI)
Audio input: 3.5 mm jack
Other connections: 4G/LTE antenna connectors, Micro USB (x1) (OTG), USB 2.0 (x1)
Video output: DisplayPort 1.4 (x1)
External control: RJ45, RS232C (in/out) 2.5 mm jack, IR (in/out) 3.5 mm jack
WiFi: WiFi 6 + Bluetooth 5.2 (slide-in module)

Convenience

Placement: Landscape (24/7), Portrait (24/7)
Tiled Matrix: Up to 10 x 15
Screen saving functions: Pixel Shift
Keyboard control: Hidden, Lockable
Signal loop through: RS232, IR Loopthrough, DisplayPort
Energy saving functions: Smart Power
Network controllable: RS232, External 4G mPCIe slot, RJ45, WiFi
WiFi protocol: a b g n, 802.11 ax, 802.11 ac

Sound

Built-in speakers: 2 x 10W RMS

Power

Mains power: 100 ~ 240 VAC, 50 ~ 60 Hz
Consumption (Typical): TBD W
Consumption (Max): TBD
Standby power consumption: <0.5 W
Energy Label Class: G

Supported Display Resolution

Computer formats: 1024 x 768, 60Hz, 1280 x 1024, 60Hz, 1280 x 720, 60Hz, 1440 x 900, 60 Hz, 1600 x 900, 60Hz, 1680 x 1050, 60Hz, 1920 x 1080, 60Hz, 3840 x 2160, 30, 60Hz, 640 x 480, 60Hz, 800 x 600, 60Hz
Video formats: 1080p, 50, 60Hz, 1080i, 50, 60Hz, 480i, 60Hz, 480p, 60Hz, 576i, 50Hz, 576p, 50Hz, 720p, 50,60 Hz, 2160p, 50, 60Hz

Dimensions

Set Width: 973.0 mm
Product weight: 10.71 kg
Set Height: 561.2 mm
Set Depth: 63.5 mm
Set Width (inch): 38.31 inch
Set Height (inch): 22.09 inch
Wall Mount: 200 (H) x 200(V) mm, M6
Set Depth (inch): 2.50 inch
Bezel width: 13.9 mm (Even bezel)
Product weight (lb): 23.61 lb

Operating conditions

Altitude: 0 ~ 3000 m
Temperature range (operation): 0 ~ 40 °C
MTBF: 50,000 hour(s)
Temperature range (storage): -20 ~ 60 °C
Humidity range (operation)[RH]: 20 - 80% RH (No condensation)
Humidity range (storage) [RH]: 5 - 95% RH (No condensation)

Multimedia Applications

USB Playback Video: MPEG, H.263, H.264, H.265, AVI, MP4, MPEG4, VP8, VP9, WEBM
USB Playback Picture: BMP, JPEG, PNG
USB Playback Audio: AAC, HEAAC, MPEG

Internal Player

CPU: 2x A72 + 4x A53
GPU: ARM Mali-T860 MP4
Memory: 4GB RAM
Storage: 32 GB eMMC

Accessories

Included Accessories: RS232 daisy-chain cable, Philips logo (x1), AC Switch Cover, USB Cover (x1), Screws, AC Power Cord, IR sensor cable (1.8 m) (x1), Quick start guide, Remote control & AAA batteries, RS232 cable, WiFi module, Wire Clamper (x3)

Miscellaneous

On-Screen Display Languages: English, French, German, Spanish, Polish, Turkish, Russian, Italian, Simplified Chinese, Traditional Chinese, Arabic, Japanese, Danish, Dutch, Finnish, Norwegian, Portuguese, Swedish
Warranty: 3 year warranty
Regulatory approvals: CE, CCC, RoHS, CB, EMF, FCC, Class A, EnergyStar 8.0, UL

