

PHILIPS

Quad HD gaming
monitor

Gaming Monitor

Evnia 5000

32 (31.5" / 80 cm diag.)

2560 x 1440 (QHD)

32M2C5500W



Your gaming experience to the utmost

Experience a 240hz refresh rate and 0.5 Smart MBR with this monitor. Not to mention, it is designed to bring you high-contrast, HDR 400 quality visuals and clear QHD-quality imagery for a gaming experience that is sure to check all boxes.

Built for fast action

- 0.5 ms ultra-fast speed for crisp image and smooth gameplay

Features designed for gamers needs

- LowBlue mode and Flicker-free easy-on-the eyes viewing
- Tilt, swivel and height-adjust for an ideal viewing position
- EasySelect menu toggle key for quick on-screen menu access
- SmartImage game mode optimized for gamers
- Smart Crosshair: for better aim and more fun

Built for fast action

- AMD FreeSync™ Premium Pro; smooth, low latency HDR gaming
- Low input lag reduces time delay between devices to monitor
- Ultra-fast 240 Hz refresh rate for virtually lag-free gaming

Immersive visuals

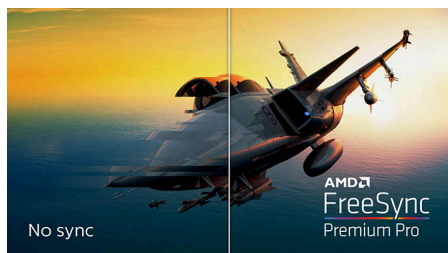
- VA display delivers awesome images with wide viewing angles
- Crystalclear images with Quad HD 2560 x 1440 pixels

Gaming Monitor

Quad HD gaming monitor

Highlights

AMD FreeSync™ Premium Pro



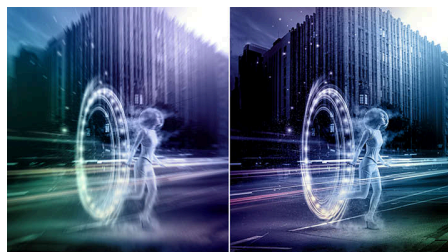
Gaming shouldn't be a choice between choppy gameplay or broken frames. AMD FreeSync™ Premium Pro provides the true HDR gaming experience: a combination of smooth gaming at peak performance, and exceptional high dynamic range visuals while still maintaining low latency.

Ultra-fast 240 Hz refresh rate



While playing the most intense engaging action-oriented games, ultra-fast 240 Hz refresh rate enhances an ultra-smooth, lag-free gaming experience. This Philips display redraws the screen image up-to 240 times per second, effectively faster than a standard display. Especially for fast-paced games like FPS and racing games, 240 Hz gives a superior motion and clarity visuals. With Philips 240 Hz display, action sequences in gameplay look judder-free and ghost-free. You will experience deeper immersion and feeling alive in game.

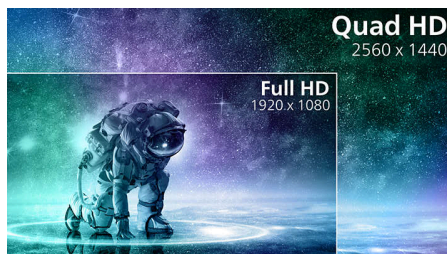
0.5 ms Smart MBR fast response



Philips Evnia with 0.5 ms Smart MBR effectively eliminates smearing and motion blur, delivers sharper and precise visuals to enhance gaming

experience. Fast-moving action and dramatic transitions will be rendered smoothly. Best choice for playing thrilling and twitch-sensitive games.

Crystalclear images



These Philips screens deliver Crystalclear, Quad HD 2560x1440 or 2560x1080 pixel images. Utilizing high performance panels with high density pixel count, enabled by high bandwidth sources like USB-C, Displayport, HDMI, these new displays will make your images and graphics come alive. Whether you are demanding professional requiring extremely detailed information for CAD-CAM solutions, using 3D graphic applications or a financial wizard working on huge spreadsheets, Philips displays will give you Crystalclear images.

DisplayHDR 400



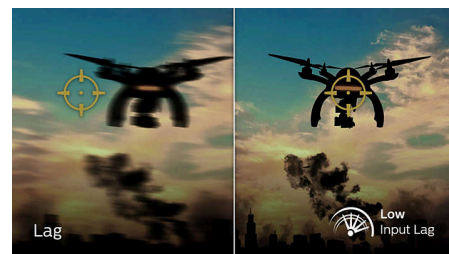
VESA-certified DisplayHDR 400 delivers a significant step-up from normal SDR displays. Unlike, other 'HDR compatible' screens, true DisplayHDR 400 produces astonishing brightness, contrast and colors. With global dimming and minimum 400 nits brightness, images come to life with notable highlights while featuring deeper, more nuanced blacks. It renders a fuller palette of rich new colors, delivering a visual experience that engages your senses.

Curved display design



Desktop monitors offer a personal user experience, which suits a curve design very well. The curved screen provides a pleasant yet subtle immersion effect, which focuses on you at the center of your desk.

Low input lag



Input lag is the amount of time that elapses between performing an action with connected devices and seeing the result on screen. Low input lag reduces the time delay between entering a command from your devices to monitor, greatly improve on playing twitch-sensitive video games, particularly important to whom plays fast-paced, competitive games.

Compact Ergo Base



The Compact Ergo Base is a people-friendly Philips monitor base that tilts, swivels and height-adjusts so each user can position the monitor for maximum viewing comfort and efficiency.

AMD
FreeSync
Premium Pro

Quad HD

VESA CERTIFIED
DisplayHDR 400

Wide Viewing
Angle

Compact Ergo
Base

EasySelect

Flicker-free

VESA CERTIFIED
DisplayHDR 400

Gaming Monitor

Quad HD gaming monitor

32M2C5500W/96

Highlights

LowBlue mode & Flicker-free



Our LowBlue Mode and Flicker-free technology have been developed to reduce eye strain and fatigue often caused by long hours in front of a monitor.

SmartImage Game mode



The new Philips gaming display has quick access OSD fine tuned for gamers, offering you multiple options. "FPS" mode (First person shooting)

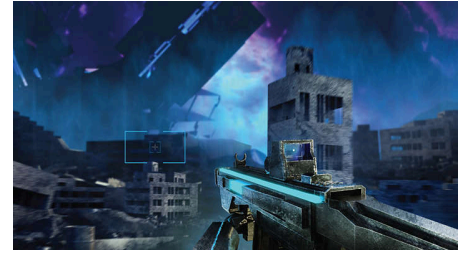
improves dark themes in games, allowing you to see hidden objects in dark areas. "Racing" mode adapts display with fastest response time, high color, along with image adjustments. "RTS" mode (Real time strategy) has a special SmartFrame mode which enables highlighting of specific area and allows for size and image adjustments. Gamer 1 and Gamer 2 enable you to save personal customized settings based on different games, ensuring best performance.

EasySelect Menu Toggle Key



The discreetly placed EasySelect Menu Toggle Key allows you to make quick and easy adjustments to monitor settings in the On-Screen Display menu.

Smart Crosshair



Color of Crosshair is set by default. When Smart Crosshair is on, the color will change as complementary color to the background color. Smart Crosshair enhances the accuracy of aiming so you can spot the enemies more easily.

Specifications

Picture/Display

Panel Size: 31.5 inch / 80 cm
Aspect ratio: 16:9
LCD panel type: VA LCD
Backlight type: W-LED system
Pixel pitch: 0.2724 x 0.2724 mm
Brightness: 500 cd/m²
Display colors: 16.7 M (8 bit)
Color gamut (typical): NTSC 100%*, sRGB 122%*
Color gamut (min.): DCI-P3 92%*
Contrast ratio (typical): 4000:1
SmartContrast: Mega Infinity DCR
Response time (typical): 1 ms (Gray to Gray)*
Viewing angle: 178° (H) / 178° (V), @ C/R > 10
Picture enhancement: SmartImage game
Maximum resolution: HDMI: 2560 x 1440 @ 144 Hz, DP: 2560 x 1440 @ 240 Hz*
Effective viewing area: 697.344 (H) x 392.256 (V) - at a 1000R curvature*
Scanning Frequency: HDMI: 30 - 230 kHz (H) / 48 - 144 Hz (V), DP: 30 - 255 kHz (H) / 48 - 240 Hz* (V)
sRGB
Delta E: < 2 (sRGB)
Flicker-free
Pixel Density: 93.24 PPI
LowBlue Mode
Display Screen Coating: Anti-Glare, 3H, Haze 25%
SmartUniformity: 93 ~ 105%
Low Input Lag
EasyRead
AMD FreeSync™ technology: Premium Pro
HDR: DisplayHDR 400 certified
Smart MBR: 0.5ms*

Connectivity

Signal Input: HDMI 2.0 x 2, DisplayPort 1.4 x 2
Sync Input: Separate Sync
Audio (In/Out): Audio out
HDCP: HDCP 1.4 (HDMI / DP), HDCP 2.2 (HDMI / DP)
USB Hub: USB 3.2, USB-B upstream x 1, USB-A downstream x 4 (with 2 for fast charge B.C 1.2)

Convenience

Plug & Play Compatibility: DDC/CI, Mac OS X, sRGB, Windows 11 / 10 / 8.1 / 8 / 7
User convenience: Power On/Off, Menu/OK, Input/Up, Game Settings/Down, SmartImage game/Back

OSD Languages: Brazil Portuguese, Czech, Dutch, English, Finnish, French, German, Greek, Hungarian, Italian, Japanese, Korean, Polish, Portuguese, Russian, Spanish, Simplified Chinese, Swedish, Turkish, Traditional Chinese, Ukrainian
Other convenience: Kensington lock, VESA mount (100x100mm)
MultiView: 2x devices, PIP/PBP mode

Stand

Height adjustment: 130 mm
Swivel: +/- 30 degree degree
Tilt: -5/20 degree

Power

Power supply: Internal, 100-240VAC, 50-60Hz
Off mode: 0.3 W (typ.)
On mode: 39.36 W (typ.)
Standby mode: 0.5 W (typ.)
Power LED indicator: Operation - White, Standby mode- White (blinking)

Dimensions

Packaging in mm (WxHxD): 900 x 527 x 226 mm
Product without stand (mm): 700 x 426 x 131 mm
Product with stand(max height): 700 x 601 x 320 mm

Weight

Product with packaging (kg): 11.14 kg
Product with stand (kg): 8.35 kg
Product without stand (kg): 6.5 kg

Operating conditions

Altitude: Operation: +12,000ft (3,658m), Non-operation: +40,000ft (12,192m)
Temperature range (operation): 0°C to 40 °C
MTBF: 50,000 (Excluded backlight) hour(s)
Relative humidity: 20%-80 %
Temperature range (storage): -20°C to 60 °C

Sustainability

Environmental and energy: RoHS
Recyclable packaging material: 100 %
Specific Substances: Mercury free, PVC / BFR free housing

Compliance and standards

Regulatory Approvals: CB, CE Mark, FCC Class B, ICES-003, CCC, CECP, CEL

Cabinet

Color: Dark Slate
Finish: Textured



* Radius of the arc of the display curvature in mm
 * The maximum resolution works for DP input only.
 * For best output performance, please always ensure that your graphic card is capable of achieving the maximum resolution and refresh rate of this Philips display.
 * Response time value equal to SmartResponse
 * Smart MBR is to adjust brightness for blur reduction, so cannot adjust brightness while Smart MBR is turned on. To reduce motion blur, LED backlight will strobe synchronously with screen refresh, which may cause noticeable brightness change.
 * Smart MBR is gaming-optimized mode. Turn on Smart MBR may cause noticeable screen flickering. It is recommended to turn off when you are not using the gaming function.
 * NTSC Area based on CIE1976
 * sRGB Area based on CIE1931
 * DCI-P3 Coverage based on CIE1976
 * The monitor may look different from feature images.
 * 2020 Advanced Micro Devices, Inc. All rights reserved. AMD, the AMD Arrow logo, AMD FreeSync™ and combinations thereof are trademarks of Advanced Micro Devices, Inc. Other product names used in this publication are for identification purposes only and may be trademarks of their respective companies.
 * Radius of the arc of the display curvature in mm