

PHILIPS

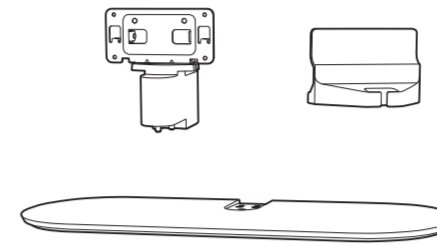
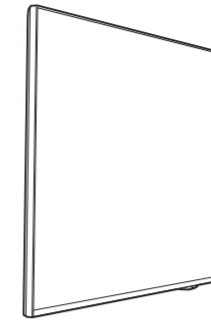
AMBILIGHT tv

Quick Start Guide

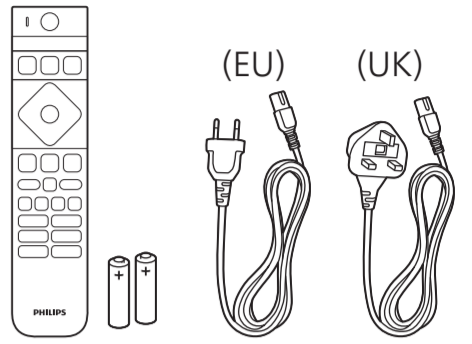
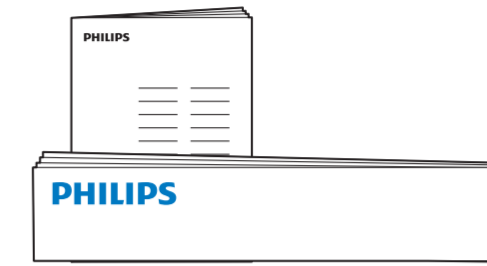
9000/9010/9050/9060/9080 Series



Tool needed for assembly



43" (M4xL12) : x7
 50"/55" (M4xL12) : x4
 (M5xL16) : x3
 65" (M4xL16) : x4
 (M5xL16) : x3



1 43"/50"/55"

65"

2

3

A Desk Placement

B Wall Placement

A

43" (M4xL12) x3
 50"/55"/65" (M5xL16) x3

43"/50"/55" (M4xL12) x4
 65" (M4xL16) x4

Recommended Wall Distance

10-20 cm

4 **Get Connected**

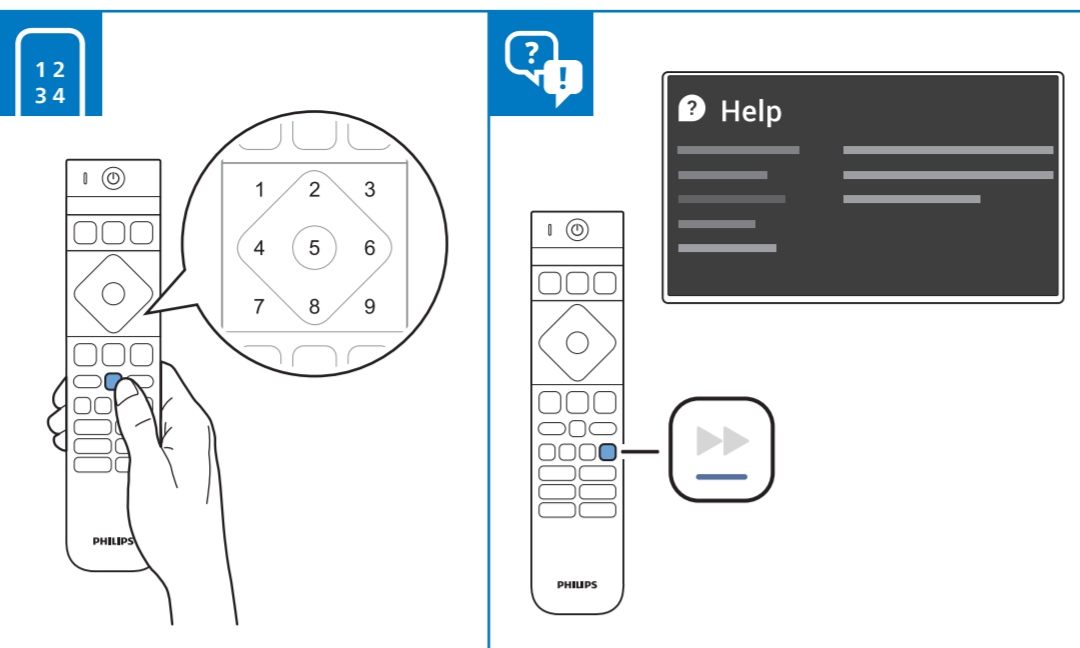
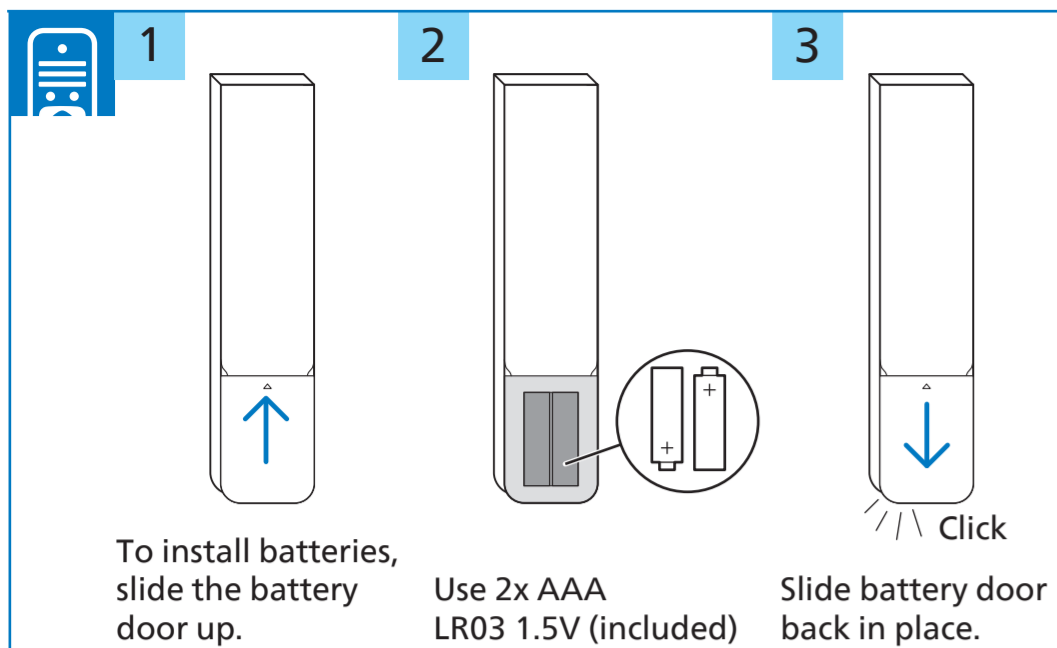
www.philips.to/smartTV

The Philips Smart TV app lets you switch channels and adjust the volume - just like a remote control.

5 **Register and Support**

www.philips.com/TVsupport

Register your TV, find out more, download the user manual and get support



i

English Read the safety instructions.

Български Прочетете инструкциите за безопасност.

Čeština Přečtěte si bezpečnostní pokyny.

Hrvatski Pročitajte sigurnosne upute.

Dansk Læs sikkerhedsforskrifterne.

Deutsch Lesen Sie die Sicherheitshinweise.

Ελληνικά Διαβάστε τις οδηγίες ασφαλείας.

Eesti Lugege ohutusnõudeid.

Español Lea las instrucciones de seguridad.

Français Lisez les consignes de sécurité.

Italiano Leggere le istruzioni di sicurezza.

Казакша Қорғаныстық нұсқаулар.

Latviešu Izlasiet drošības norādījumus.

Lietuvių Perskaitykite saugos instrukcijas.

Magyar Olvassa el a biztonságási utasításokat.

Nederlands Lees de veiligheidsvoorschriften.

Norsk Les sikkerhetsforskriftene.

Polski Zapoznaj się z instrukcjami bezpieczeństwa.

Português Leia as instruções de segurança.

Română Citiți instrucțiunile de siguranță.

Русский Читайте инструкции по технике безопасности.

Srpski Pročitajte bezbednosna uputstva.

Slovenščina Preberite varnostna navodila.

Slovenský Prečítajte si bezpečnostné pokyny.

Suomi Lue turvaohjeet.

Svenska Läs säkerhetsinstruktionerna.

ภาษาไทย โปรดอ่านคำแนะนำด้านความปลอดภัย

Türkçe Güvenlik talimatlarını okuyun.

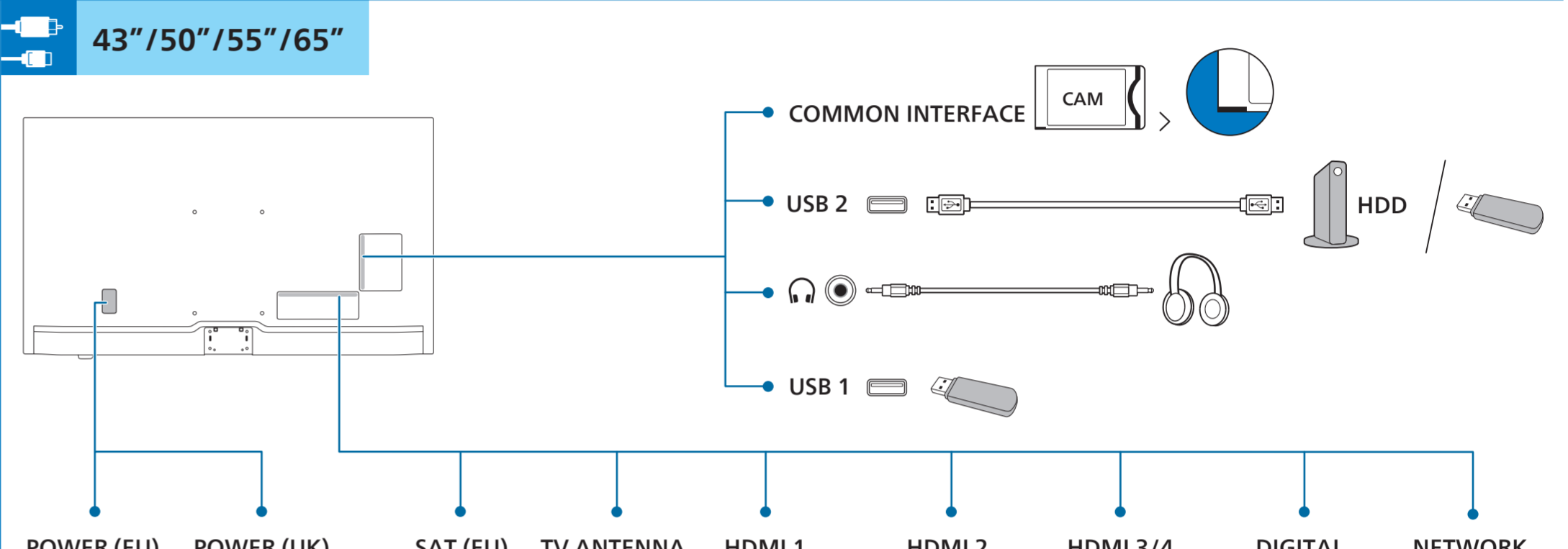
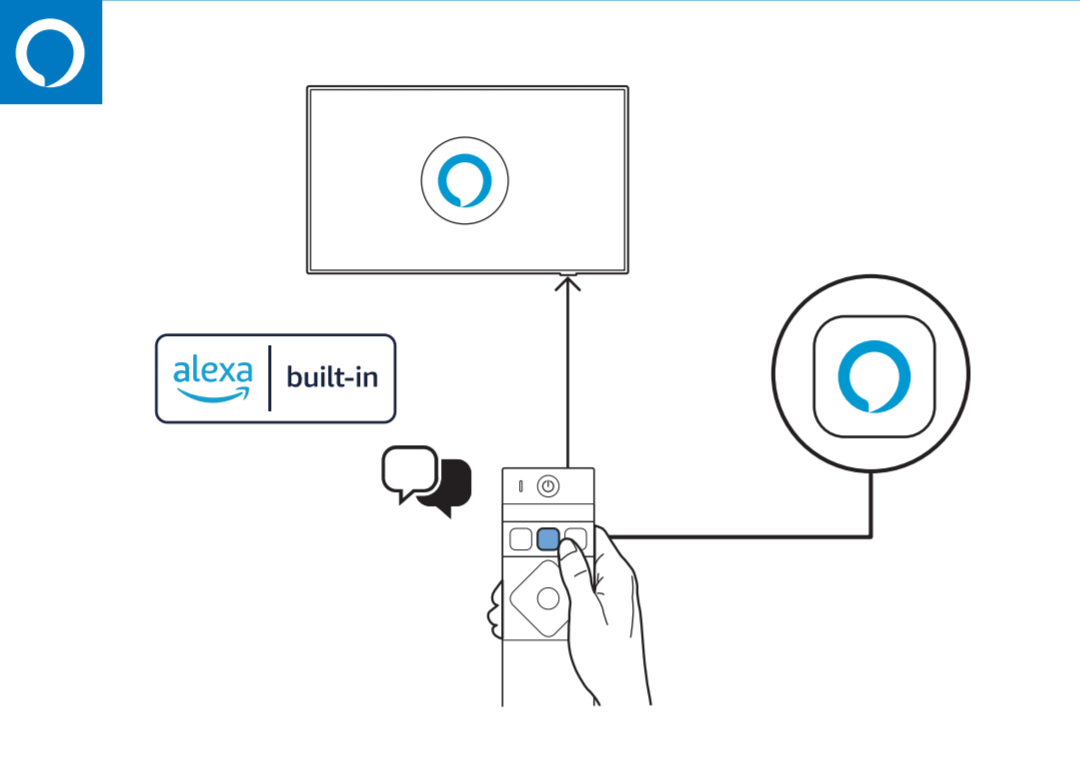
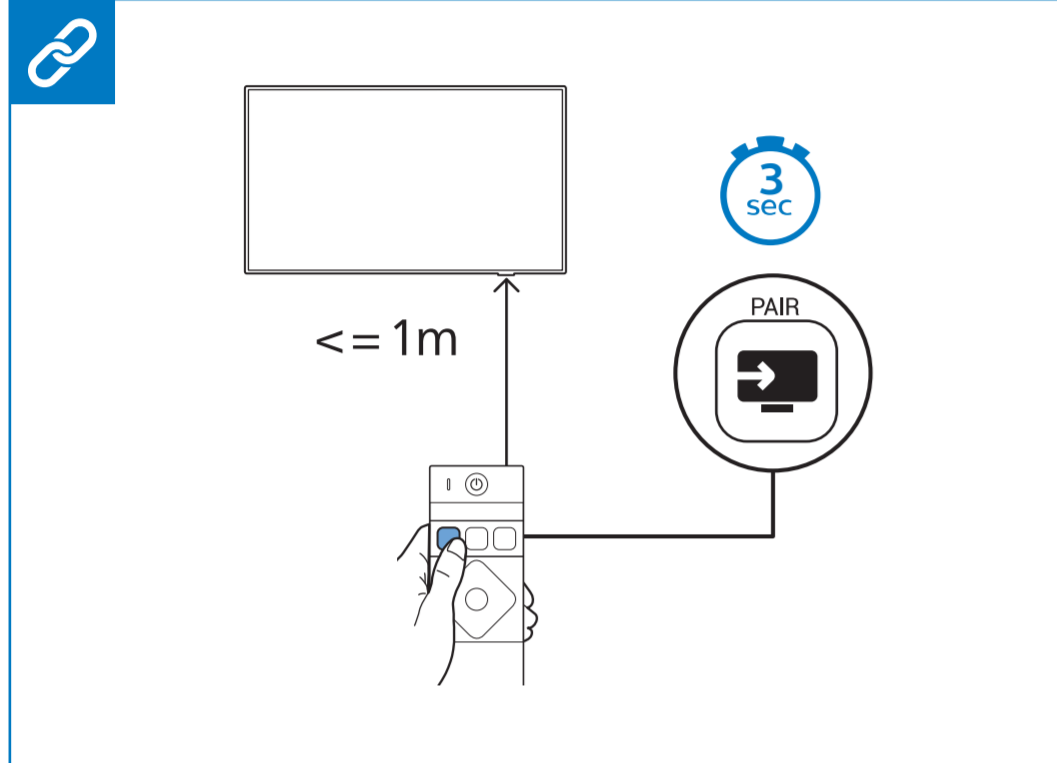
Українська Читайте інструкції з техніки безпеки.

العربية قراءة تعليمات السلامة

עברית קראו את הוראות הבטיחות

FSC Logo H:12mm

SEPARER LES ÉLÉMENTS AVANT DE TRICHER



B

Diagonal (inch/cm)	X (mm)	Y (mm)	Screw Size	Screw Length (mm)
43" / 108	100	200	M6	10-12
50" / 126	200	300	M6	10-16
55" / 139	200	300	M6	10-16
65" / 164	300	300	M6	12-20

