

# PHILIPS

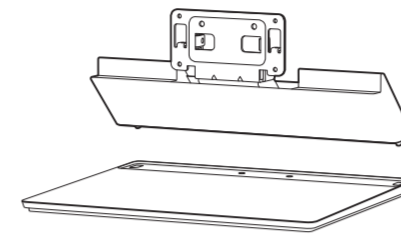
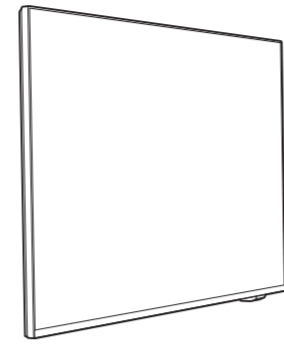
## AMBILIGHT tv

Quick Start Guide

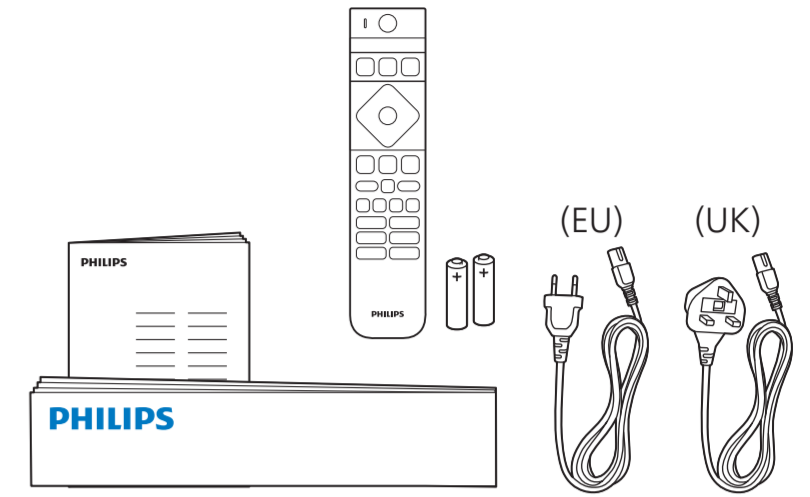
8600 Series



Tool needed for assembly



- 43"/55" (M4xL12) : x7
- 65" (M4xL16) : x8
- 43"/55" (Q3xL8) : x2
- 65" (Q3xL8) : x2



**1** 43"/55"

65"

**2**

**3**

**A Desk Placement**

**B Wall Placement**

**A**

65"

43"/55"

**Recommended Wall Distance**

10-20 cm

**4** **Get Connected**

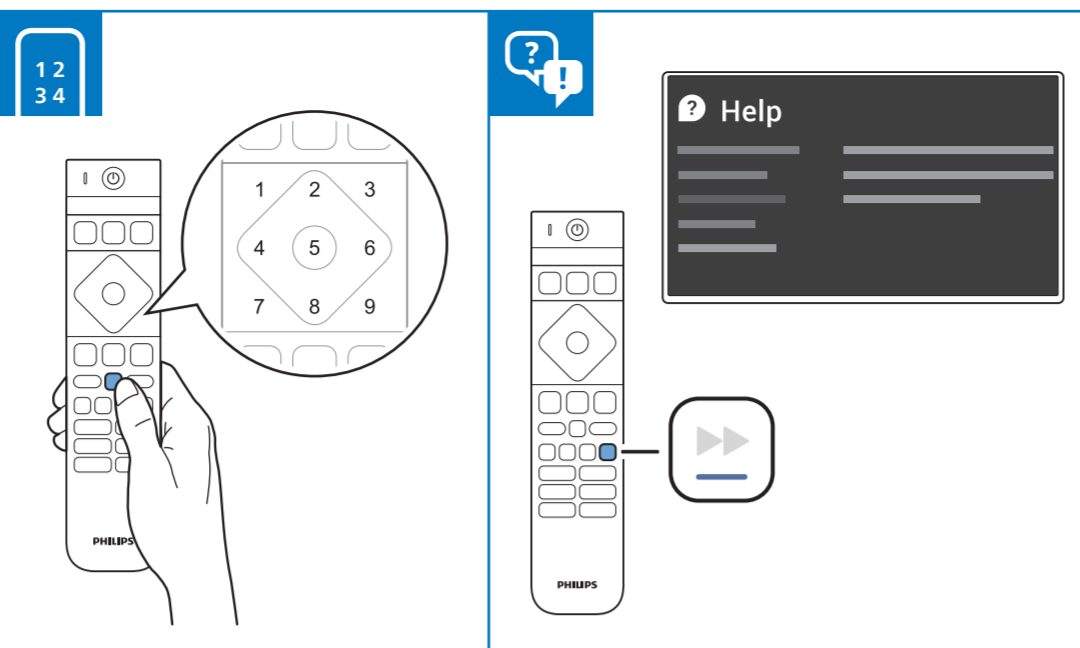
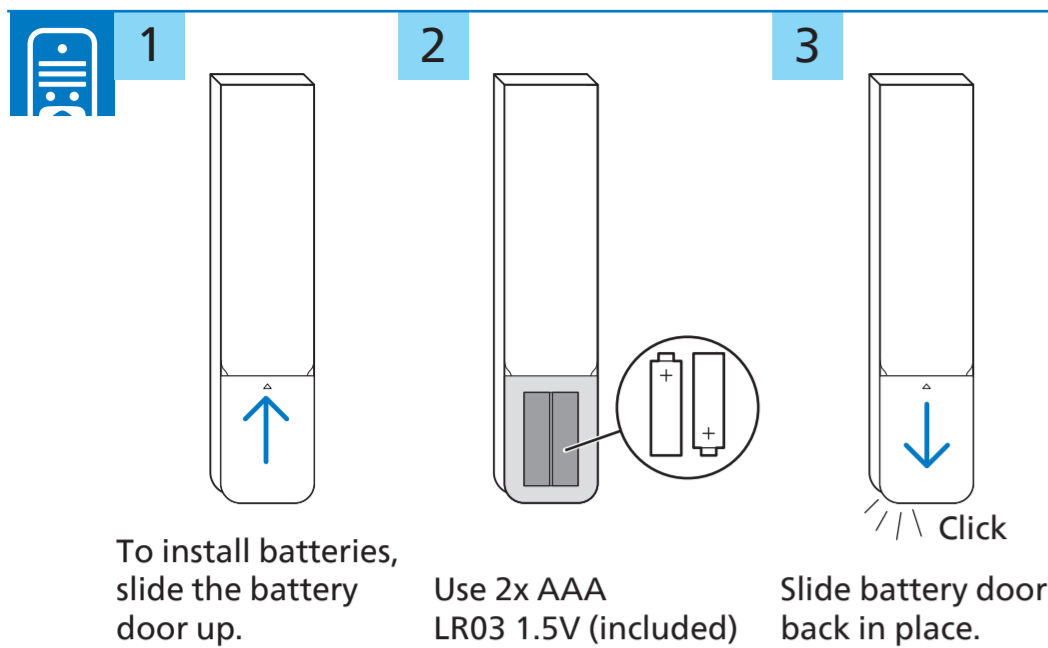
[www.philips.to/smartTV](http://www.philips.to/smartTV)

The Philips Smart TV app lets you switch channels and adjust the volume - just like a remote control.

**5** **Register and Support**

[www.philips.com/TVsupport](http://www.philips.com/TVsupport)

Register your TV, find out more, download the user manual and get support



**English** Read the safety instructions.

**Български** Прочетете инструкциите за безопасност.

**Čeština** Přečtěte si bezpečnostní pokyny.

**Hrvatski** Pročitajte sigurnosne upute.

**Dansk** Læs sikkerhedsforskrifterne.

**Deutsch** Lesen Sie die Sicherheitshinweise.

**Ελληνικά** Διαβάστε τις οδηγίες ασφαλείας.

**Eesti** Lugege ohutusnõudeid.

**Español** Lea las instrucciones de seguridad.

**Français** Lisez les consignes de sécurité.

**Italiano** Leggere le istruzioni di sicurezza.

**Қазақша** Қорғаныстық нұсқаулар.

**Latviešu** Izlasiet drošības norādījumus.

**Lietuvių** Perskaitykite saugos instrukcijas.

**Magyar** Olvassa el a biztonságai utasításokat.

**Nederlands** Lees de veiligheidsvoorschriften.

**Norsk** Les sikkerhetsforskriftene.

**Polski** Zapoznaj się z instrukcjami bezpieczeństwa.

**Português** Leia as instruções de segurança.

**Română** Citiți instrucțiunile de siguranță.

**Русский** Читайте инструкции по технике безопасности.

**Srpski** Pročitajte bezbednosna uputstva.

**Slovenščina** Preberite varnostna navodila.

**Slovenský** Prečítajte si bezpečnostné pokyny.

**Suomi** Lue turvaohjeet.

**Svenska** Läs säkerhetsinstruktionerna.

**ภาษาไทย** โปรดอ่านคำแนะนำด้านความปลอดภัย

**Türkçe** Güvenlik talimatlarını okuyun.

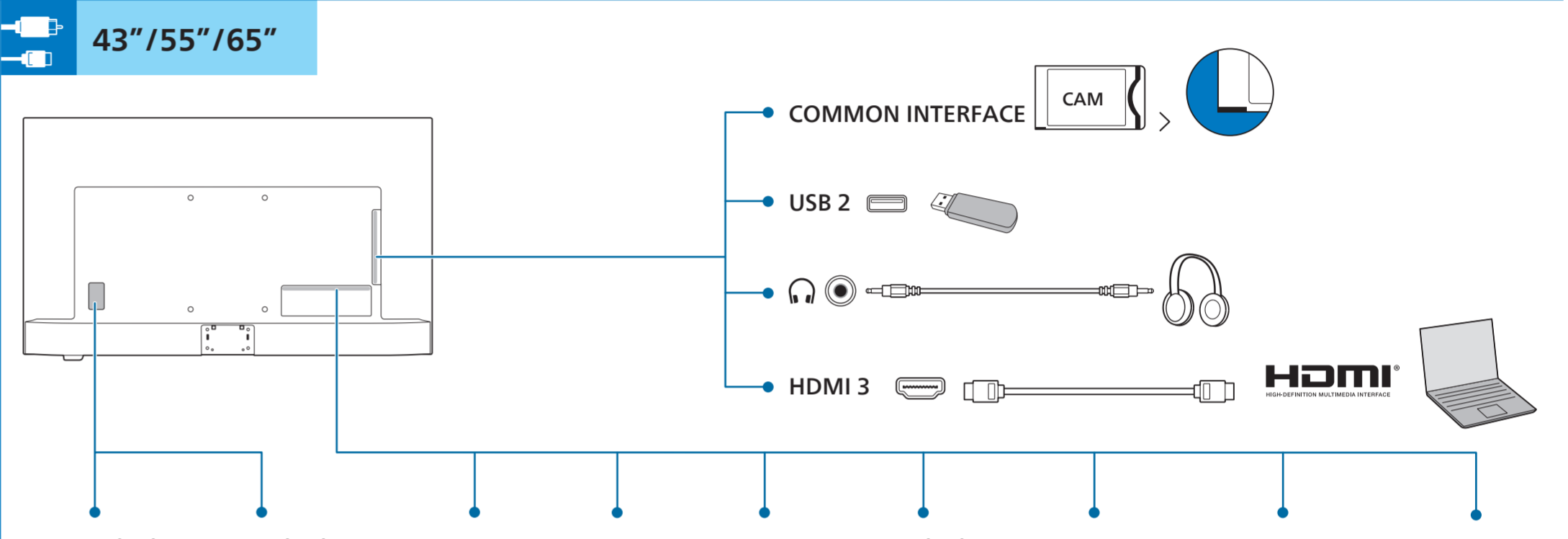
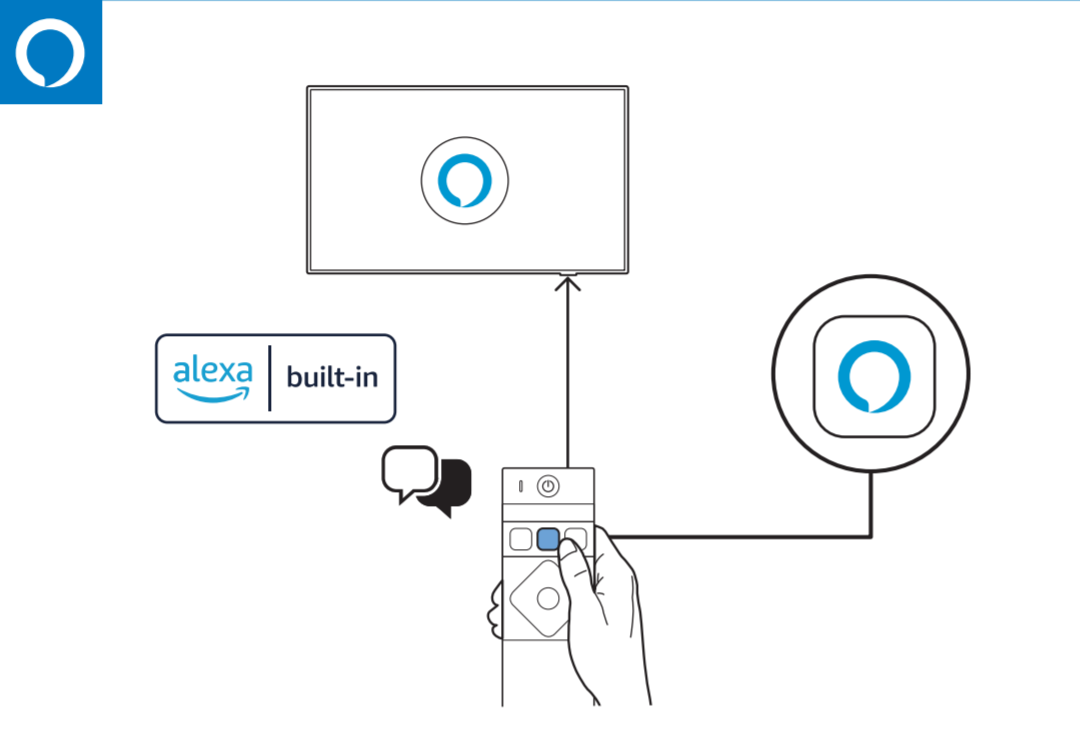
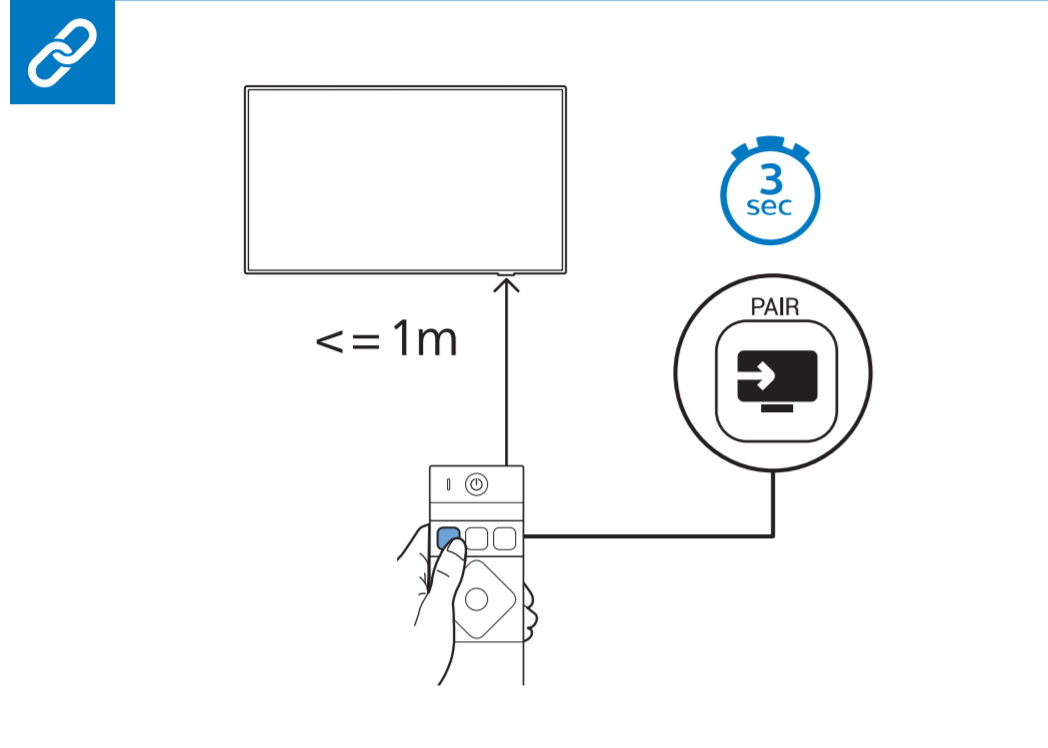
**Українська** Читайте інструкції з техніки безпеки.

**العربية** قراءة تعليمات السلامة.

**עברית** קראו את הוראות הבטיחות

**FSC Logo H:12mm**

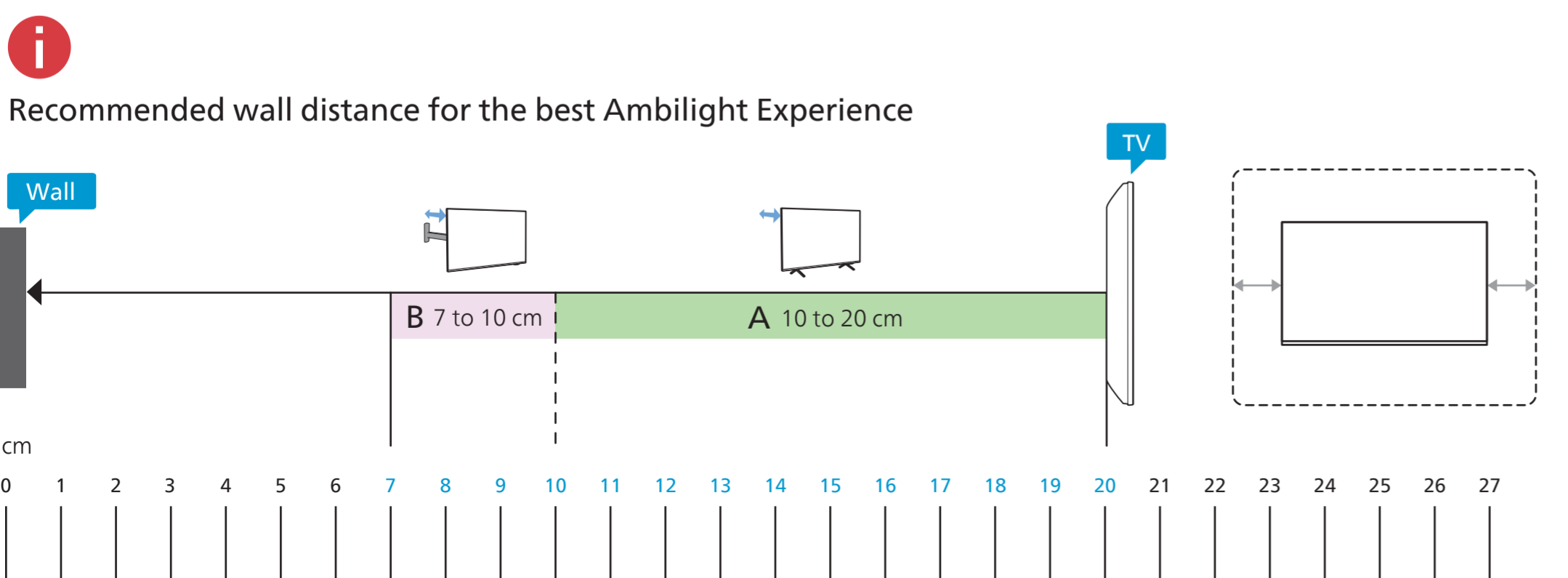
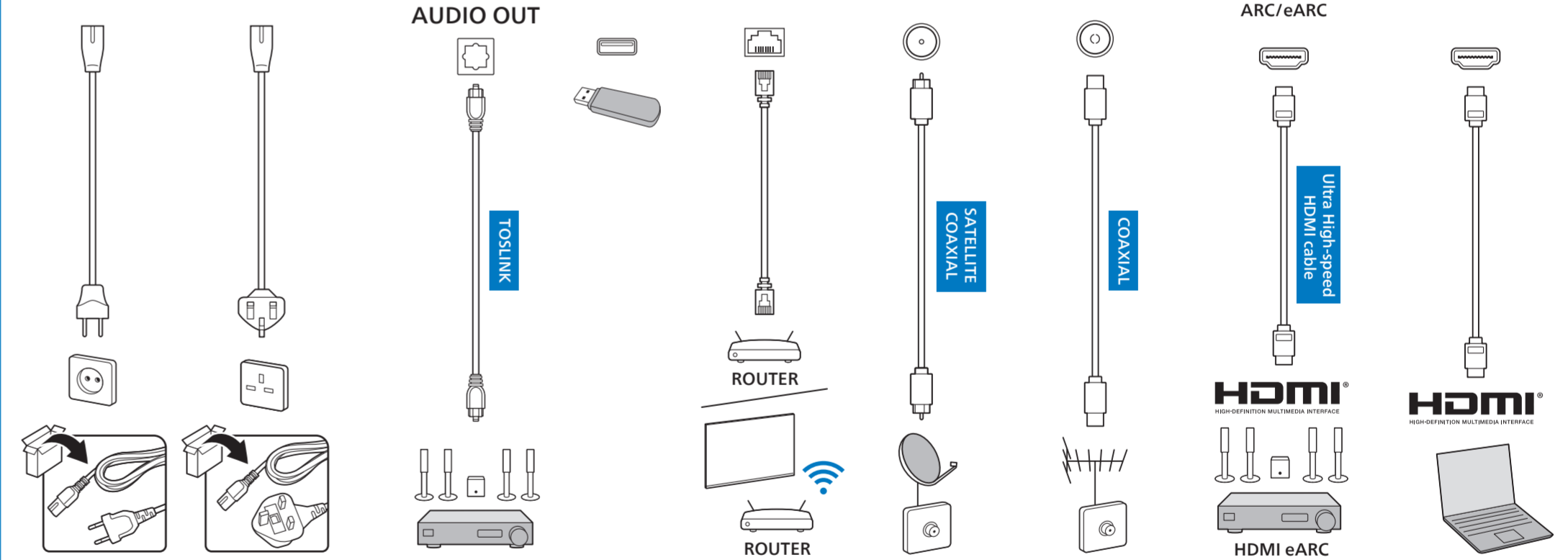
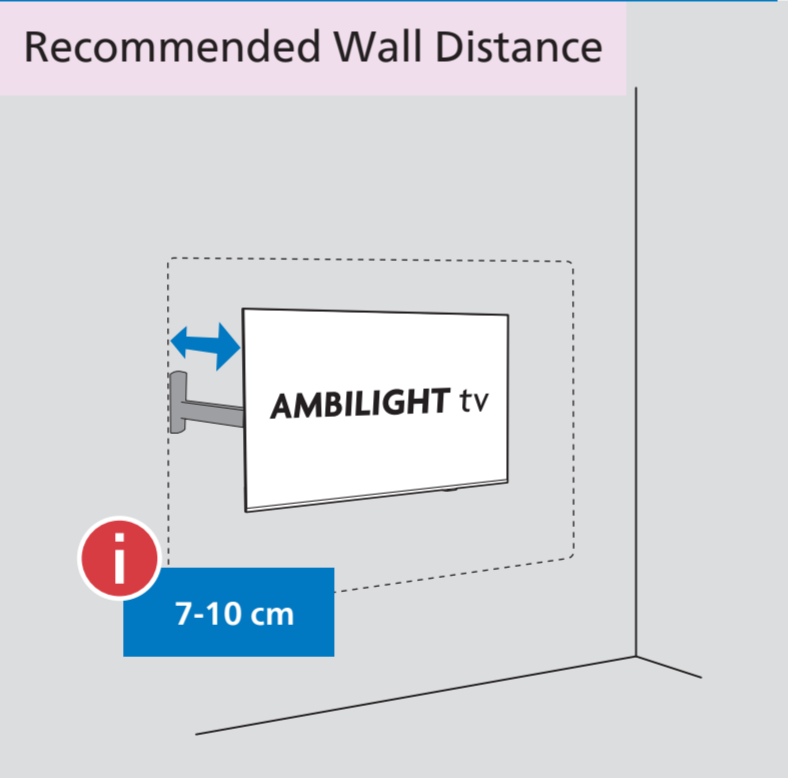
**FEUILLE** Séparer les éléments avant de lire



**B**

Diagonal (inch/cm)	X (mm)	Y (mm)	Screw Size	Screw Length (mm)
43" / 108	100	200	M6	10-12
55" / 139	200	300	M6	10-16
65" / 164	300	300	M6	12-20

**TV**



**PHILIPS**

All registered and unregistered trademarks are property of their respective owners. Specifications are subject to change without notice. Philips and the Philips Shield Emblem are registered trademarks of Koninklijke Philips N.V. and are used under license. This product has been manufactured by and is sold under the responsibility of TP Vision Europe B.V., and TP Vision Europe B.V. is the warrantor in relation to this product. 2025 © TP Vision Europe B.V. All rights reserved. www.philips.com/welcome