

PHILIPS

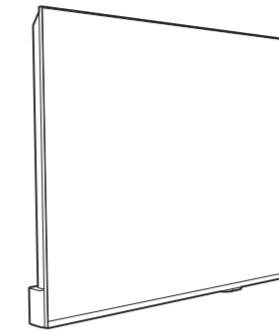
Television

Quick Start Guide

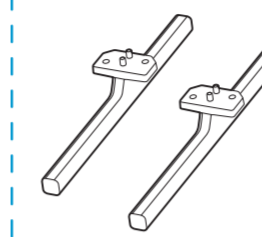
7000 Series



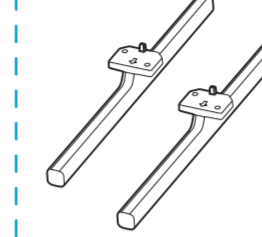
Tool needed for assembly



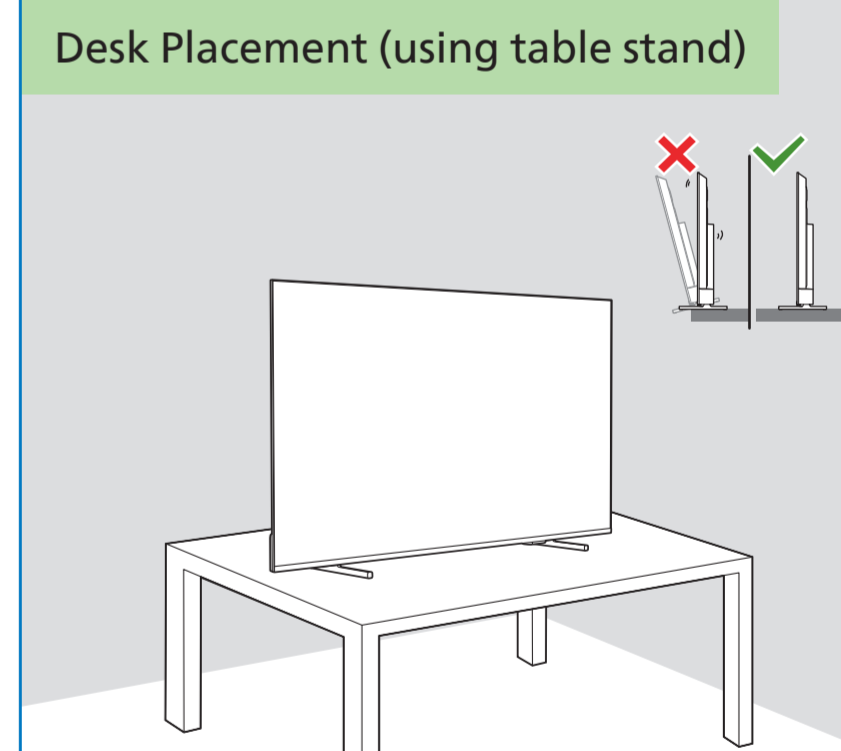
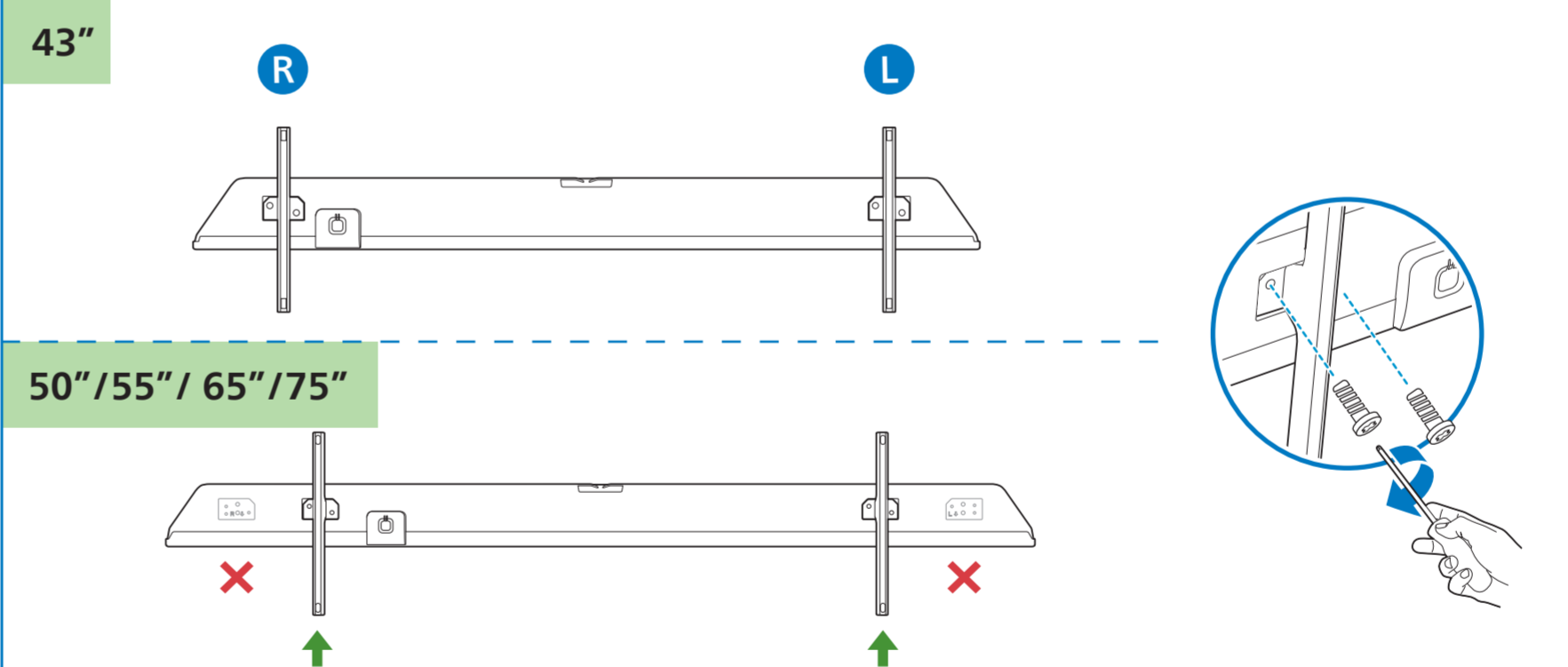
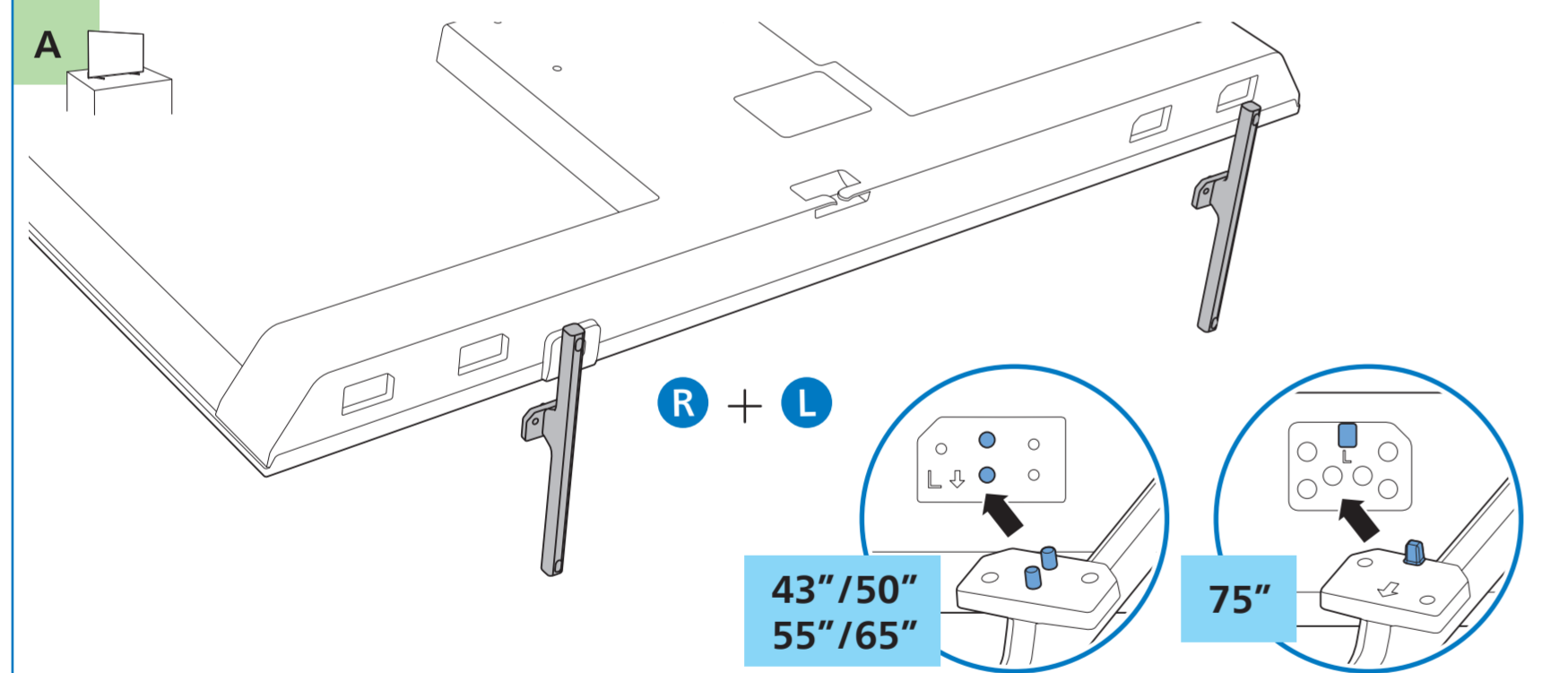
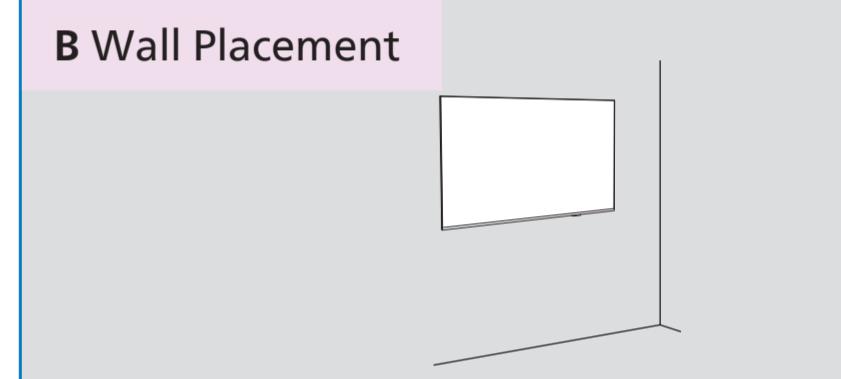
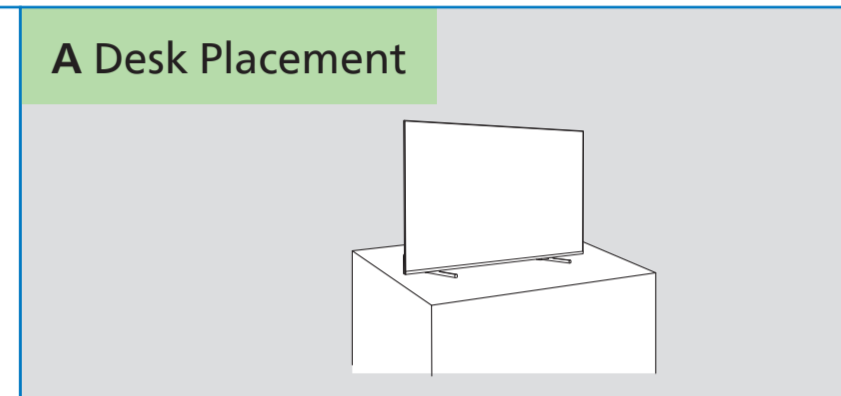
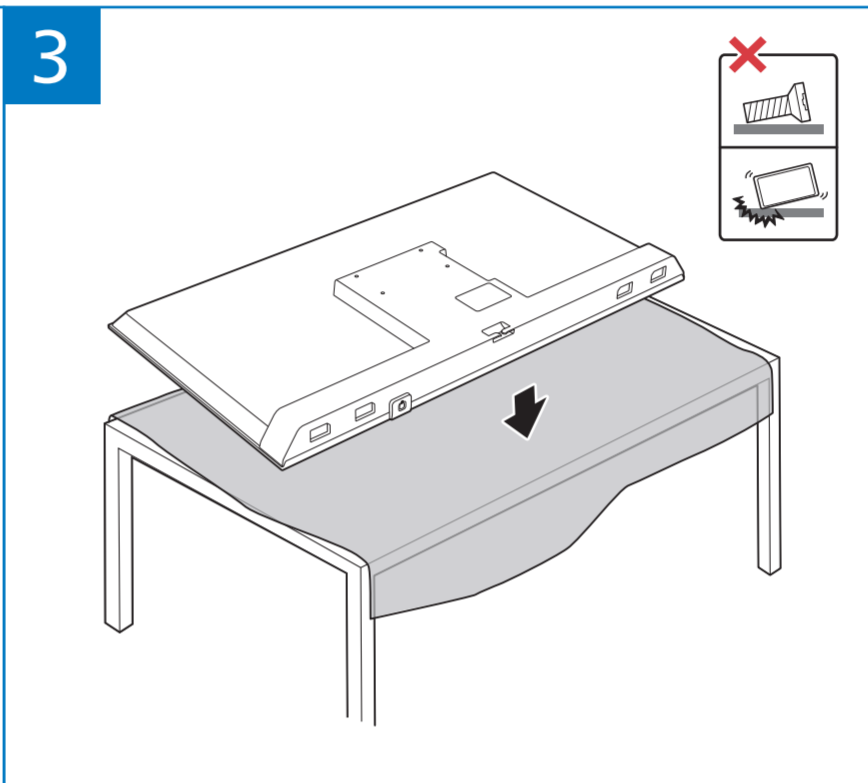
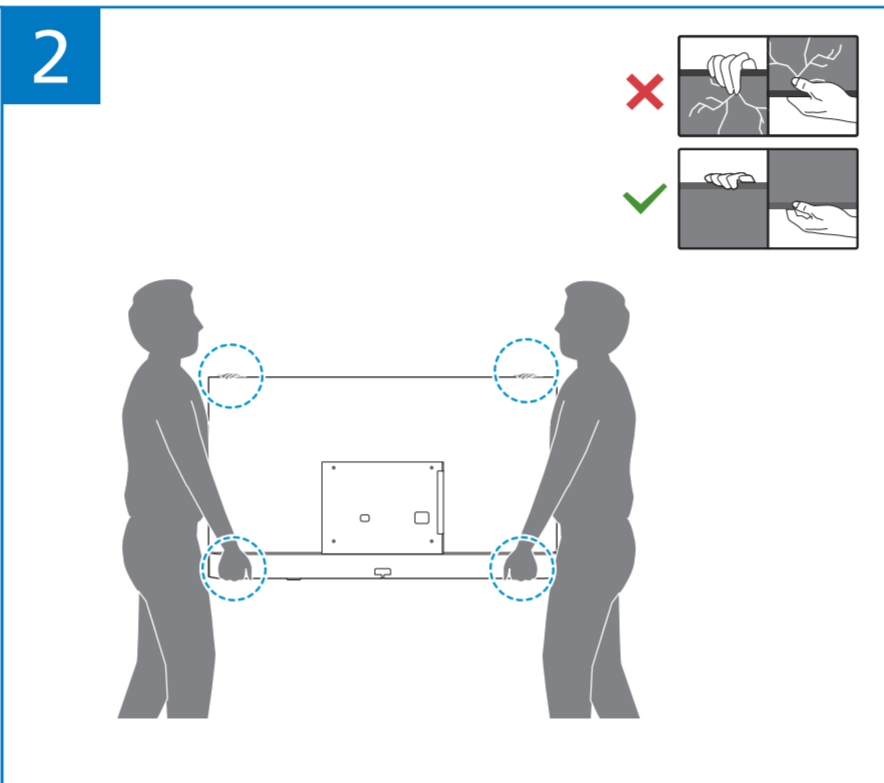
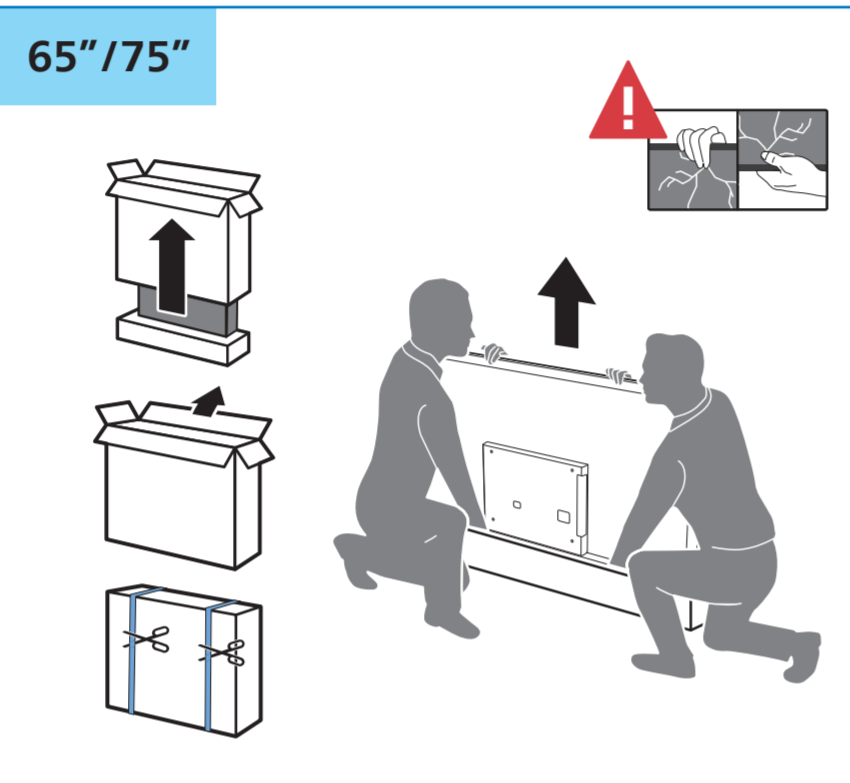
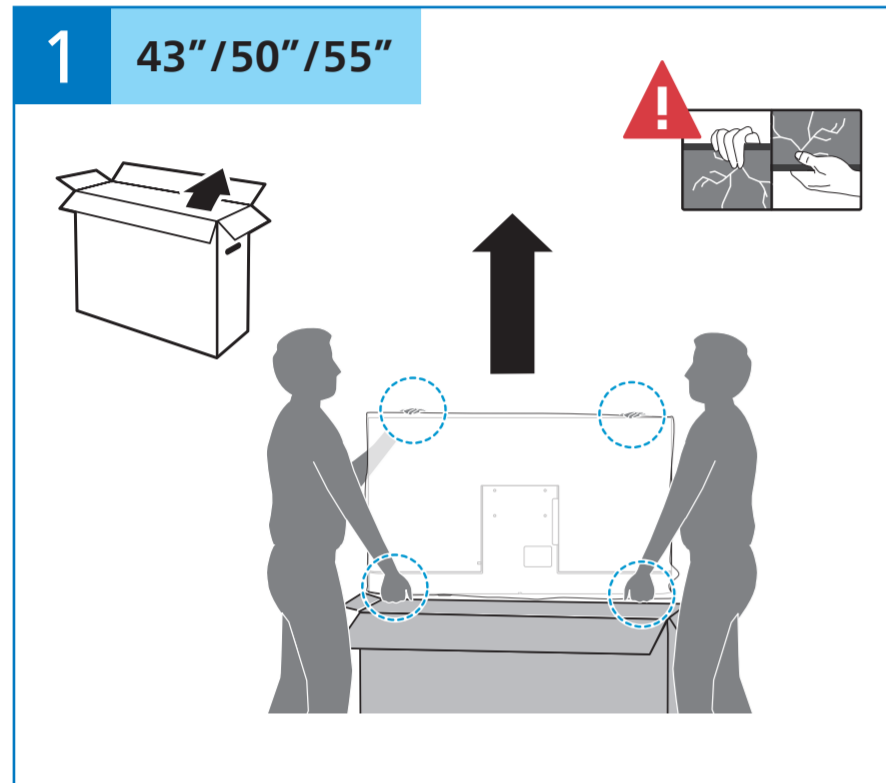
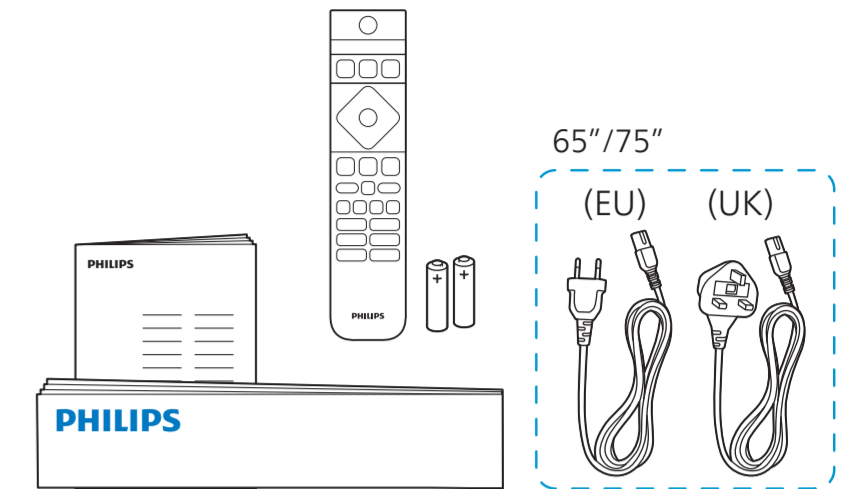
43"/50"/55"/65"



75"

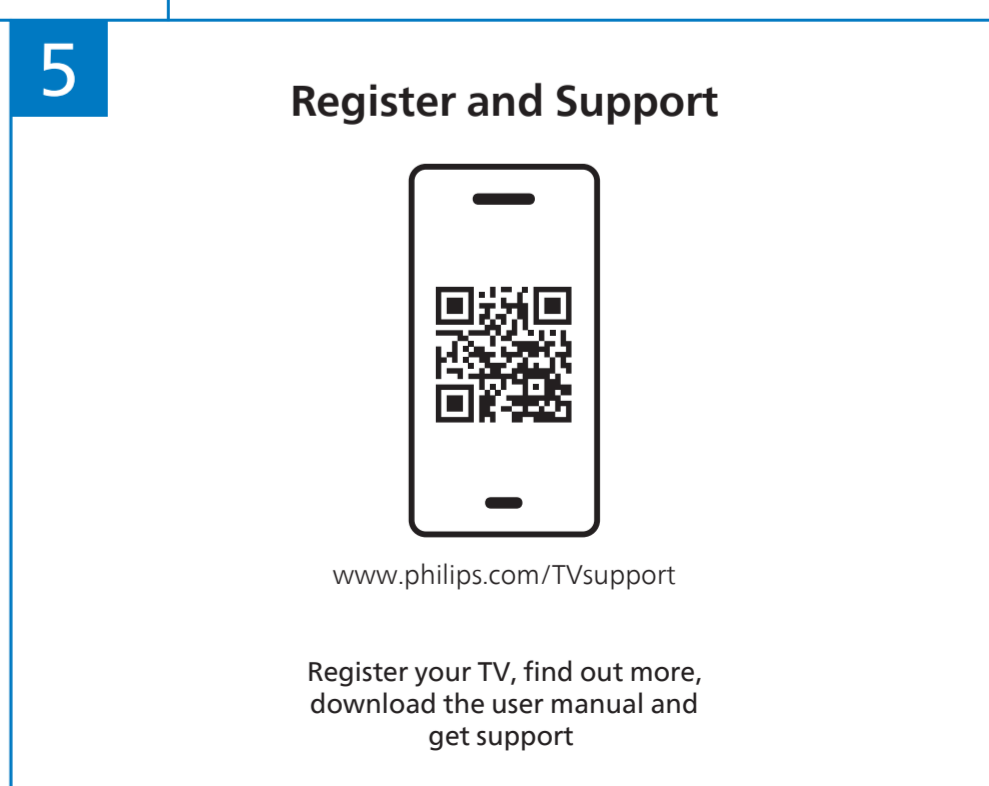
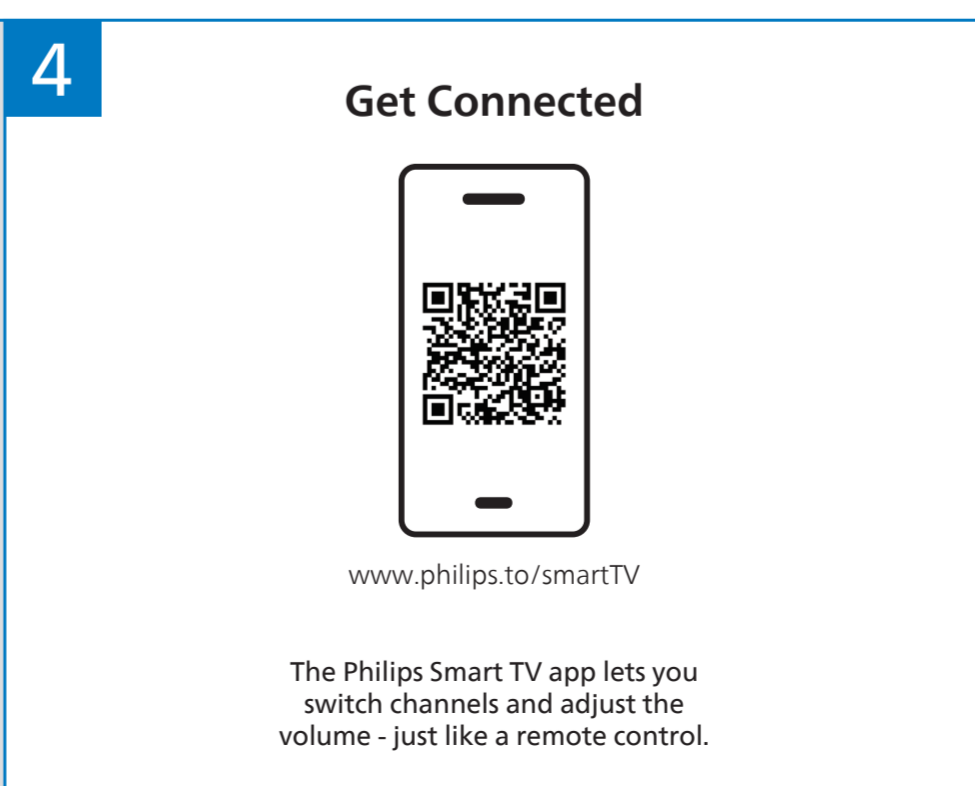
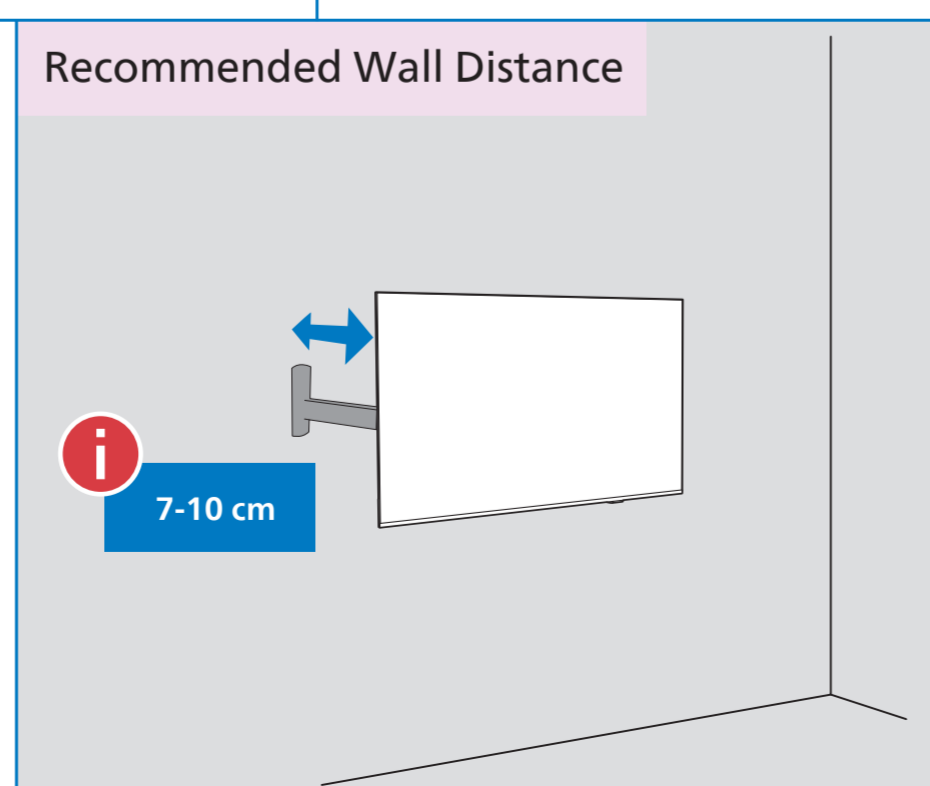


43" (Q4xL16) : x4
 50"/55" (Q4xL18) : x4
 65" (M4xL20) : x4
 75" (M5xL20) : x4



B

Diagonal (inch/cm)	X (mm)	Y (mm)	Screw Size	Screw Length (mm)
43" / 108	200	100	M6	9-10
50" / 126	200	100	M6	9-10
55" / 139	200	100	M6	9-10
65" / 164	400	300	M8	12-22
75" / 189	400	300	M8	12-22





English Read the safety instructions. **Français** Lisez les consignes de sécurité. **Português** Leia as instruções de segurança. **Türkçe** Güvenlik talimatlarını okuyun.

Български Прочетете инструкциите за безопасност. **Italiano** Leggere le istruzioni di sicurezza. **Română** Citiți instrucțiunile de siguranță. **Українська** Читайте інструкції з техніки безпеки.

Čeština Přečtěte si bezpečnostní pokyny. **Қазақша** Қорғаныстық нұсқаулар. **Русский** Читайте инструкции по технике безопасности. **العربية** قراءة تعليمات السلامة.

Hrvatski Pročitajte sigurnosne upute. **Latviešu** Izlasiet drošības norādījumus. **Srpski** Pročitajte bezbednosna uputstva. **עברית** קראו את הוראות הבטיחות.

Dansk Læs sikkerhedsforskrifterne. **Lietuvių** Perskaitykite saugos instrukcijas. **Slovenščina** Preberite varnostna navodila.

Deutsch Lesen Sie die Sicherheitshinweise. **Magyar** Olvassa el a biztonsági utasításokat. **Slovenský** Prečítajte si bezpečnostné pokyny.

Ελληνικά Διαβάστε τις οδηγίες ασφαλείας. **Nederlands** Lees de veiligheidsvoorschriften. **Suomi** Lue turvaohjeet.

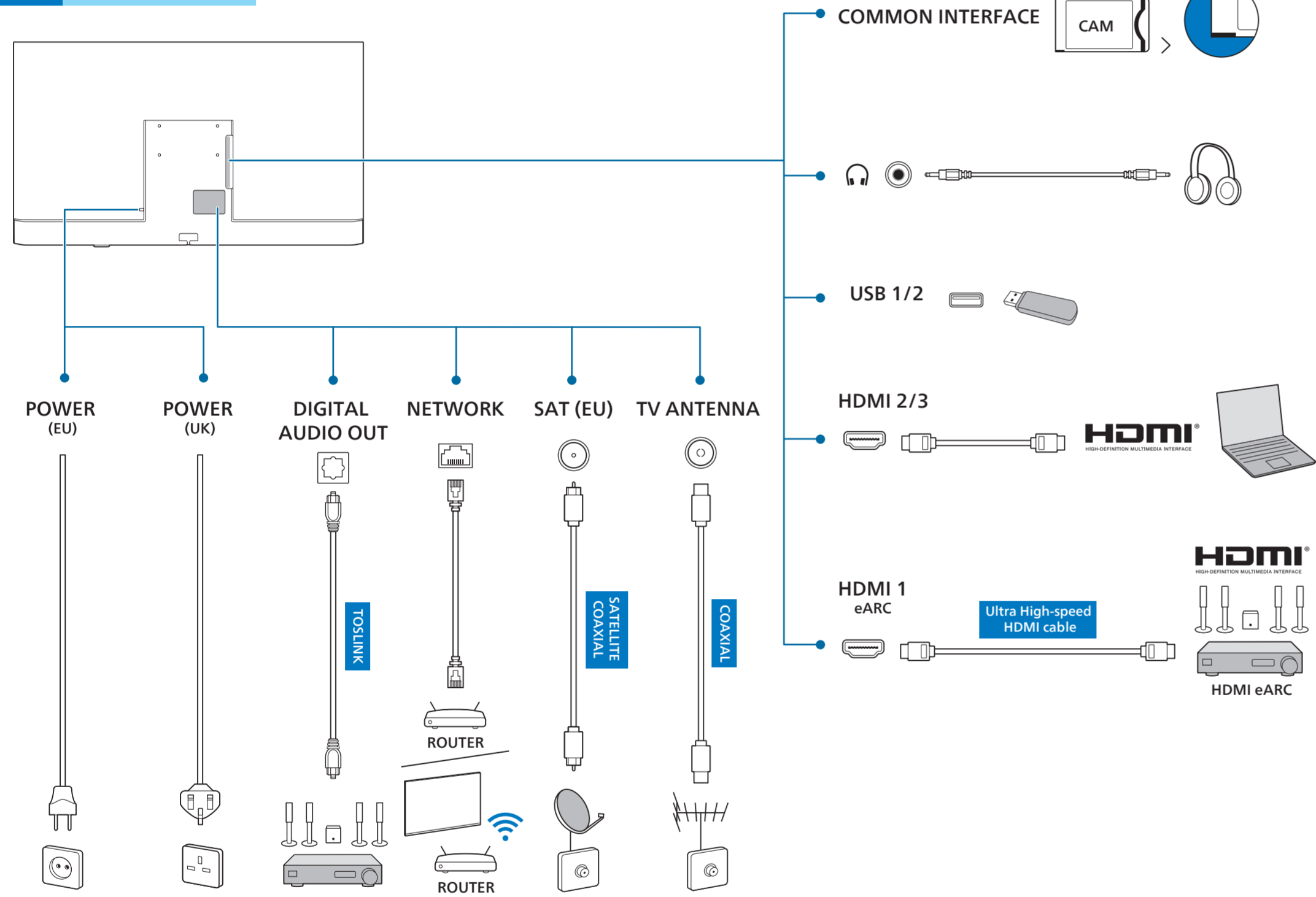
Eesti Lugege ohutusnõudeid. **Norsk** Les sikkerhetsforskriftene. **Svenska** Läs säkerhetsinstruktionerna.

Español Lea las instrucciones de seguridad. **Polski** Zapoznaj się z instrukcjami bezpieczeństwa. **ภาษาไทย** โปรดอ่านคำแนะนำด้านความปลอดภัย

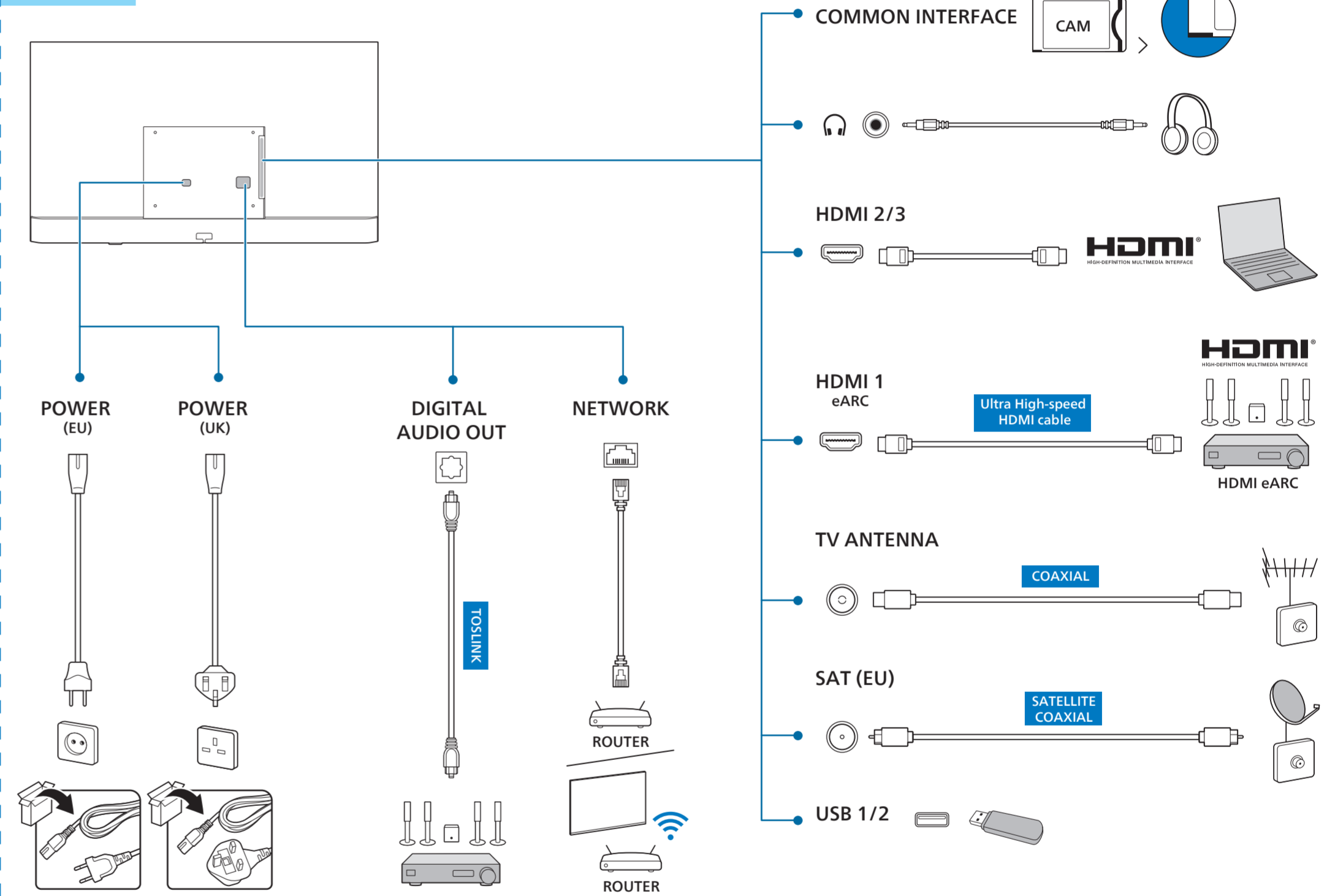
FSC Logo
H:12mm



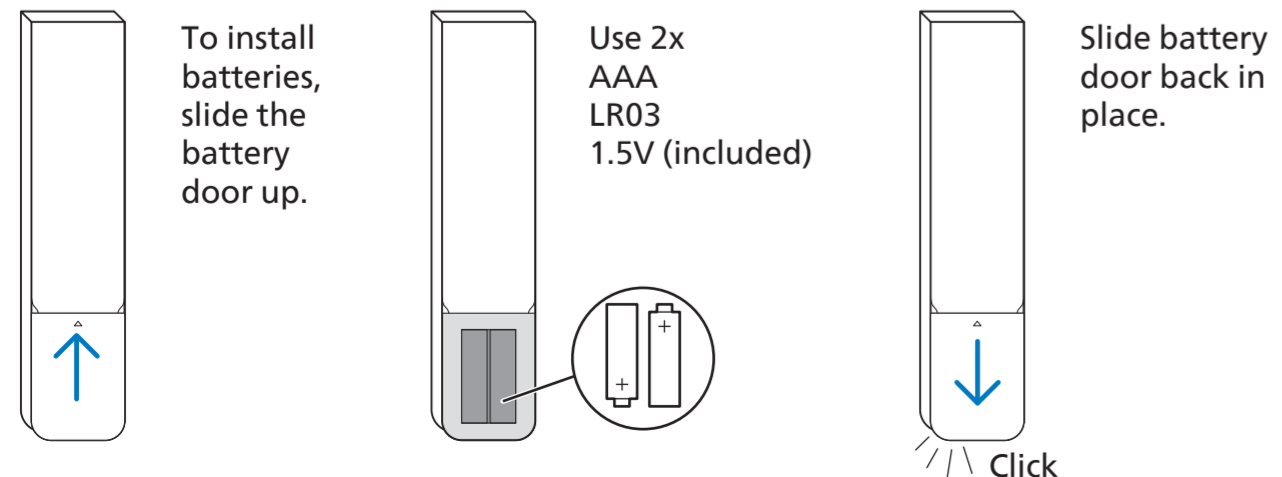
43"/50"/55"



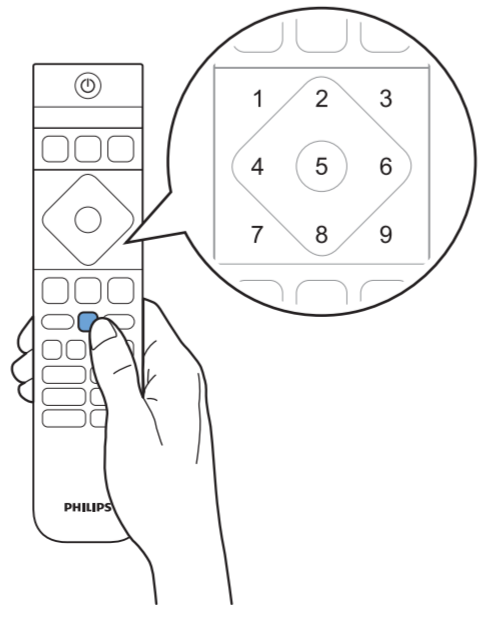
65"/75"



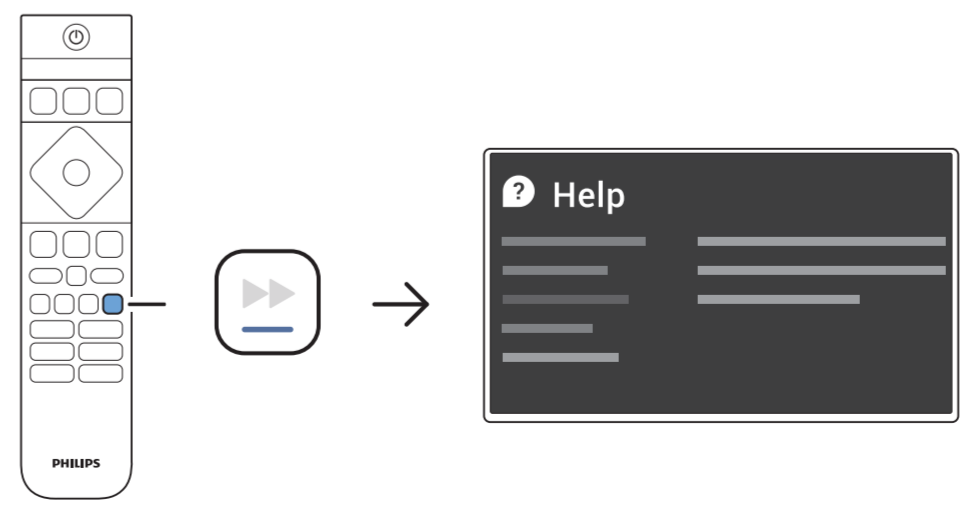
1 **2** **3**



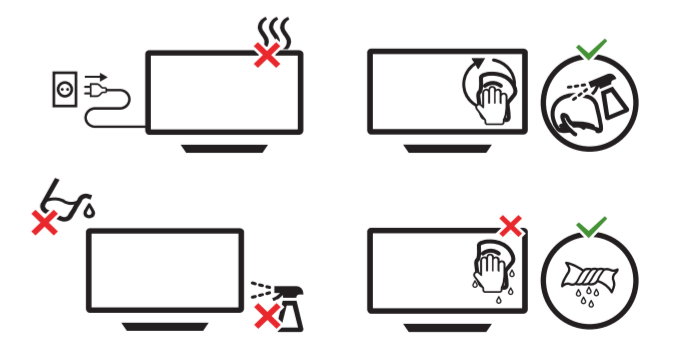
1 2 3 4



?



!



PHILIPS
All registered and unregistered trademarks are property of their respective owners. Specifications are subject to change without notice. Philips and the Philips Shield Emblem are registered trademarks of Koninklijke Philips N.V. and are used under license. This product has been manufactured by and is sold under the responsibility of TP Vision Europe B.V., and TP Vision Europe B.V. is the warrantor in relation to this product. 2025 © TP Vision Europe B.V. All rights reserved. www.philips.com/welcome