

PHILIPS



Showerproof groin
and body trimmer

Bodygroom Series
5000

5 click-on combs (2-3-5-7 mm)

Contour-following 2D shaver

61 min cordless use/1 h charge

Back reach attachment



BG5021/15

Complete body grooming, safe even below the belt 2D contour following with skin protect technology

The Series 5000 is designed to power through hair without compromising on skin comfort, even in hard-to-reach areas like the back. Use the skin-friendly shaver with contour-following 2D technology or trim with the 2, 3 or 5 mm-long combs.

Easy to use

- Body groomer built to last with no oil required

Safely and effectively trims even intimate hair

- Bi-directional trimmer and comb to trim in every direction

Easy and convenient use

- 100% Showerproof body groomer
- Ergonomic grip for added grooming control
- 60 minutes of cordless use and quick 1 hour charging

Safely and effectively trims even intimate hair

- Shaving with safety and comfort on your delicate skin

Ultimate grooming experience

- Full-body grooming in one product
- Grooming those hard-to-get places with back attachment

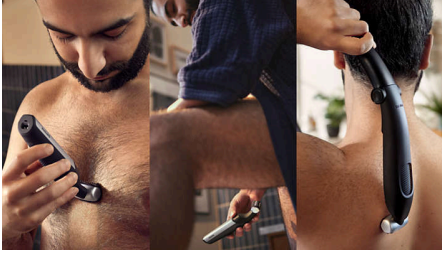
Bodygroom Series 5000

Showerproof groin and body trimmer

BG5021/15

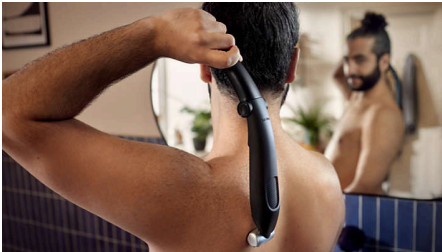
Highlights

Full body grooming



Now you can confidently groom everywhere on your body with one tool. This Philips full-body groomer for men cuts hair at 3 different lengths for clean, even results on your back, shoulders, chest, abs, underarm, arms, groin and legs.

Back attachment



Conveniently remove back hair. This attachment has been specially designed for convenient back grooming.

Skin-friendly body shaver



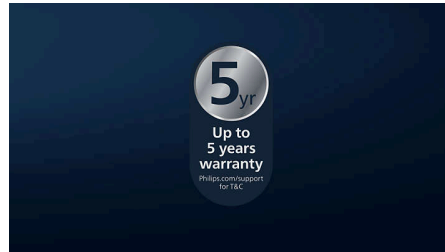
The shaver head features patented rounded tips and a hypo-allergenic foil to protect your skin from cuts and nicks while shaving.

Bi-directional trimmer & combs



The shaving system comes with 3 attachable combs for 2 mm, 3 mm and 5 mm trimming, or use it without a comb for a closer finish.

Body groomer built to last with no oil required



All of our body grooming products are built to last. They come with a standard global 2-year warranty, including the option to extend up to 5 years* and they never need to be oiled.

Wet and dry



Your wet-and-dry body groomer is fully waterproof, so you can use it in or outside of the shower and clean your groomer easily. For best results, use on dry hair before showering.

Rechargeable battery power 60



High-power rechargeable battery for full body use, with 60 minutes of cordless use. With the quick charging solution, you can use the appliance again after a 5 minute charge.

Ergonomic grip



Your body groomer is easy to hold and manoeuvre, with a rubber ergonomic grip for more controlled trimming.

Bodygroom Series 5000

Showerproof groin and body trimmer

BG5021/15

Specifications

Accessories

Comb: 3 body combs (2, 3, 5 mm)
Back handle attachment

Power

Run time: 60 minutes
Battery type: Li-Ion
Charging: 5-min quick charge, USB-A (no adapter included)
Maximum power consumption: 5 W
Input voltage: 5 V

Design

Handle: Ergonomic grip and handling

Service

2 year guarantee
Up to 5-year guarantee

Cutting system

Shaving element: Foil with two pre-trimmers
Skin comfort: Skin protection system, Comfort in sensitive areas
Length settings: 3 fixed length settings

Ease of use

Wet & Dry: Showerproof and easy cleaning
Charging: USB-A Charging (5 V= / ≥1 A)
Maintenance-free: No oil needed
Secured length settings
Operation: Cordless use

