

PHILIPS

WQHD monitor with
USB-C

Curved Business
monitor

3000 series

34" (86.36 cm)

3440 x 1440 (WQHD)

34B2U3600C



Redefining workflow productivity

This monitor is all about quality. With its WQHD resolution, Smart KVM switch, and USB-C to RJ45 connectivity, it is the ideal option for switching between sources and connecting to the Internet without compromising on picture quality.

Designed for the way you work

- Built-in stereo speakers for multimedia
- MultiView enables simultaneous dual connection and view
- Eyesafe-certified blue light protection and colour accuracy
- Tilt, swivel and height-adjust for an ideal viewing position
- Less eye fatigue with Flicker-Free technology
- Curved display design for a more immersive experience
- SmartKVM: for easily switching between sources.
- SoftBlue Technology: for comfortable viewing

Single cable USB-C connection

- RJ-45 to USB-C gives easy network connection with security
- USB 3.2 high-speed data transfer

Superb Picture Quality

- VA display gives awesome images with a wide viewing angle
- 1.07 billion colours for smooth colour gradations and detail

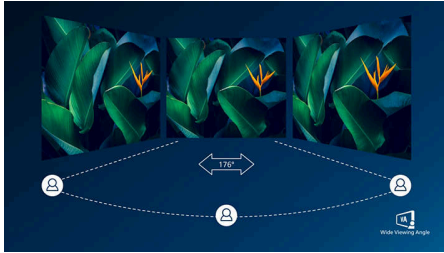
Curved Business monitor

WQHD monitor with USB-C

34B2U3600C/00

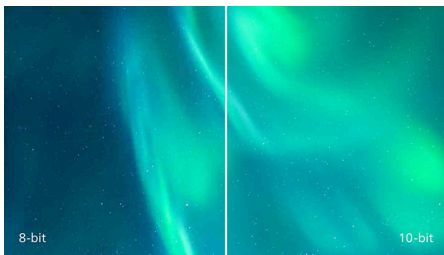
Highlights

VA display



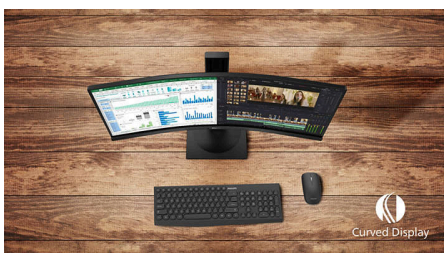
The Philips VA LED display uses an advanced vertical alignment technology that gives you super-high static contrast ratios for extra-vivid and bright images. While standard office applications are handled with ease, it is especially suitable for photos, web browsing, films, gaming and demanding graphical applications. Its optimised pixel management technology gives you a 176/176 degree extra-wide viewing angle, resulting in crisp images.

10-bit colours



The 10 bit display delivers rich colour depth with 1.07 billion colours and 12 bit internal processing for re-creating smooth, natural colours without gradations or colour banding.

Curved display design



Desktop monitors offer a personal user experience, which suits a curved design very well. The curved screen provides a pleasant yet subtle immersion effect, which focuses on you at the centre of your desk.

Built-in stereo speakers



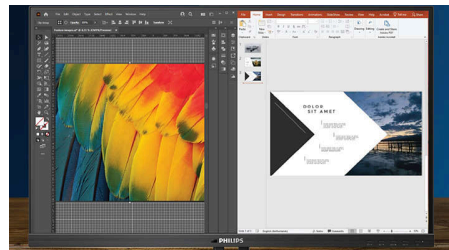
A pair of high-quality stereo speakers built into a display device. They may be visible front firing, or invisible down firing, top firing, rear firing etc. depending on model and design.

TUV Rheinland Eyesafe - RPF 40



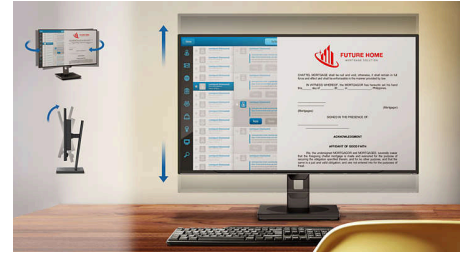
Philips display meets the TUV Rheinland Eyesafe® standard to truly protect you from long exposure to blue light. The always-on blue light filter not only helps reduce digital eye strain, but also guarantees colour integrity.

MultiView technology



With the ultra-high resolution Philips MultiView display, you can now experience a world of connectivity. MultiView enables active dual connect and view so that you can work with multiple devices like a PC and notebook simultaneously, for complex multitasking.

Compact Ergo Base



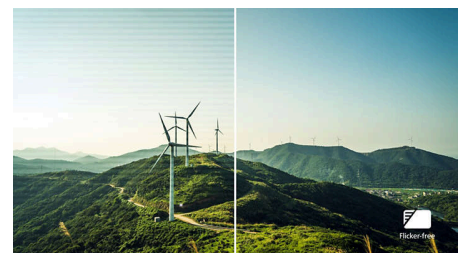
The Compact Ergo Base is a people-friendly Philips monitor base that tilts, swivels and height-adjusts so each user can position the monitor for maximum viewing comfort and efficiency.

SmartKVM



Unlike traditional built-in KVM monitor buttons, the smart KVM allows for switching between sources with the click of a button on your keyboard. When all devices are properly connected, users can easily switch between sources by clicking the "Ctrl" key three times.

Flicker-Free technology



Due to the way brightness is controlled on LED-backlit screens, some users experience flicker on their screen which causes eye fatigue. Philips Flicker-Free technology applies a new solution to regulate brightness and reduce flicker for more comfortable viewing.



Wide Viewing Angle



Curved Display



Built-in Speaker



eyesafe CERTIFIED RPF 40



Multiview



Compact Ergo Base



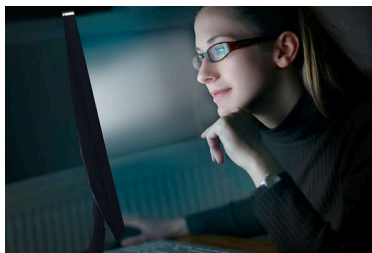
Flicker-free



SoftBlue Technology

Highlights

SoftBlue Technology



SoftBlue LED technology, combined with the monitor's low blue light panel, is an effective solution for reducing the adverse health effects caused by high exposure to blue light. In this monitor's panel, the ratio of light is reduced by nearly 50 percent, while the SoftBlue LED technology works simultaneously by reducing harmful blue light rays emitted from the screen. Furthermore, the SoftBlue LED technology is

tested and certified by TUV Rheinland Eyesafe® for its effectiveness in reducing blue light emissions.

High-speed data transfer

USB 3.2 high-speed data transfer

USB-C Docking with RJ45



Simplify all peripherals from monitor to PC using one-cable docking USB Type-C connector, including networking, high-resolution video

output from PC to monitor, and surfing on the Internet without an additional network cable, even without a LAN port on your notebook. RJ45 connection through USB-C offers a fast and secure connection when needed. Getting the fastest data speeds allows you to transfer data from a HDD to your PC faster than ever. Additionally, USB-C with power delivery can even enable you to power and charge your notebook from the monitor, eliminating the need for extra power cables.



Specifications

Picture/Display

Panel Size: 34 inch/86.36 cm
Aspect ratio: 21:9
LCD panel type: VA LCD
Backlight type: W-LED system
Pixel pitch: 0.23175 x 0.23175 mm
Optimum resolution: 3440 x 1440 @ 60 Hz
Brightness: 300 cd/m²
Display colours: 1.07B (10 bits)
Colour gamut (typical): NTSC area: 104%, sRGB area: 120%*
Contrast ratio (typical): 3500:1
SmartContrast: 50,000,000:1
Response time (typical): 4 ms (Grey to Grey)*
Viewing angle: 178° (H)/178° (V), @ C/R > 10
Picture enhancement: SmartImage
Maximum resolution: 3440 x 1440 @ 100 Hz (HDMI), 3440 x 1440 @ 120 Hz (DP/USB-C)
Effective viewing area: 797.22 (H) x 333.72 (V) - at a 1500R curvature*
Scanning Frequency: HDMI: 30K-160 KHz (H) / 48 - 100 Hz (V), DP/USB-C: 30-190 KHz (H) / 48 - 120 Hz (V)
sRGB
SoftBlue
Flicker-free
Pixel Density: 110 PPI
Display Screen Coating: Anti-Glare, 3H, Haze 25%
EasyRead
Adaptive sync
EyeSafe

Connectivity

Signal Input: HDMI 2.0 x 1, DisplayPort 1.4 x 1, USB-C x 1 (upstream, DP Alt mode, data, PD)
Sync Input: Separate Sync, Sync on Green
Audio (In/Out): Audio out x 1
RJ45: Ethernet LAN (10M/100M/1G)
HDCP: HDCP 1.4 (HDMI/DisplayPort/USB-C); HDCP 2.2 (HDMI/DisplayPort/USB-C)
HBR3
USB Hub: USB3.2, Gen1, 5G, upstream: USB-C1(Full)/USB-B; downstream: USB-A x 4 (with x 1 fast charge B.C 1.2)

Power Delivery

Max power delivery: Up to 90 W, 5 V/3 A, 7 V/3 A, 9 V/3 A, 10 V/3 A, 12 V/3 A, 15 V/3 A, 20 V/4.5 qA
Version: USB PD version 3.0

Convenience

Built-in Speakers: 5 W x 2
Plug and Play Compatibility: DDC/CI, Mac OS, sRGB, Windows 11/10
User convenience: SmartImage, Input, User, Menu, Power On/Off
OSD Languages: Brazil Portuguese, Czech, Dutch, English, French, Finnish, German, Greek, Hungarian, Italian, Japanese, Korean, Portuguese, Polish, Russian, Simplified Chinese, Spanish, Swedish, Traditional Chinese, Turkish, Ukrainian
Other convenience: Kensington lock, Earphone hook, VESA mount (100 x 100 mm)
Control software: SmartControl
MultiView: 2 x devices, PIP/PBP mode
SmartKVM: Yes (USB-C/USB-B)*

Stand

Height adjustment: 180 mm
Swivel: +/- 180 degree
Tilt: -5/30 degree

Power

ECO mode: 20.2 W (typ.)
Power supply: Built-in, 100–240 VAC, 50–60 Hz
Off mode: 0.3 W (typ.)
On mode: 28.19 W (typ.) (Energy Star test method)
Standby mode: 0.3 W (typ.)
Power LED indicator: Operation - White, Standby mode - White (flashing)
Energy Label Class: D

Dimensions

Packaging in mm (W x H x D): 930 x 525 x 188 mm
Product without stand (mm): 807 x 369 x 107 mm
Product with stand (max height): 807 x 575 x 287 mm

Weight

Product with packaging (kg): 15.35 kg
Product with stand (kg): 10.401 kg
Product without stand (kg): 7.82 kg

Operating conditions

Altitude: Operation: +12,000 ft (3658 m), Non-operation: +40,000 ft (12,192 m)
Temperature range (operation): 0°C to 40 °C
Relative humidity: 20%-80 %
Temperature range (storage): -20°C to 60 °C
MTBF (demonstrated): 70,000 hrs (excluded backlight)

Sustainability

Environmental and energy: EPEAT*, RoHS, Energy Star
Post-consumer recycled plastic: 85%
Recyclable packaging material: 100 %
Specific Substances: Mercury free, PVC/BFR free housing

Compliance and standards

Regulatory Approvals: CB, CE Mark, EPA, TUV/GS, TUV Ergo, TCO Certified, TCO Certified Edge, EAC, EAC ROHS, MEPS, CEL, CCC, CECP, UKCA, EMF, FCC, ICES-003, eyesafe®
CERTIFIED 2.0, TÜV Rheinland Low Blue Light (Hardware Solution)

Cabinet

Finish: Texture
Foot: Black
Front bezel: Black
Rear cover: Black

What's in the box?

Cables: HDMI cable, DisplayPort cable, USB-C to C cable, Power cable
Monitor with stand
User Documentation

- * Radius of the arc of the display curvature in mm
- * Response time value equal to SmartResponse
- * NTSC Area based on CIE1976, sRGB Area based on CIE1931.
- * Users are now able to switch sources easier than ever with the latest SmartKVM feature: Users can simply click the "ctrl" key three times, swap the main picture and/or sub picture on PIP and press the hotkey located on the bottom-right side of the monitor. Please note that the hotkey feature is only available for Windows and MacOS systems.
- * For Video transmission via USB-C, your Notebook/device must support USB-C DP Alt mode
- * Activities such as screen sharing and online streaming over the Internet can impact your network performance. Your hardware and network bandwidth will determine the overall audio and video quality.
- * For USB-C power and charging function, your Notebook/device must support USB-C standard Power Delivery specifications. Please check with your Notebook user manual or manufacturer for more details.
- * If your Ethernet connection seems slow, please enter the OSD menu and select USB 3.0 or a higher version that can support the LAN speed up to 1G.
- * EPEAT rating is valid only where Philips registers the product. Please visit <https://www.epeat.net/> for registration status in your country.
- * The monitor may look different from feature images.
- * The products and accessories listed on this leaflet may differ by country and region.

