

PHILIPS



2K LED TV

LED

80 cm (32") TV

Pixel Plus HD

HDR10 colour and contrast

Dolby Audio



32PHS6000

Small. Smart. Utterly versatile.

Think compact. Pick a price to fit your needs. Let Titan OS help you find all the things you love to watch in HD, and fast. With clear, crisp sound, pixel-sharp images and seamless voice control, sit back, relax and enjoy the ride.

Small, smart, easy

- Titan OS. Find it easily.
- Connect seamlessly to smart home networks

Good value. Great performance

- Small, smart and versatile
- Get a better view with HD

Forward thinking design

- Add clarity to each word with Vocal Boost
- European values in design
- The size that fits your needs

Vivid viewing, crisper sound

- Colour and contrast with HDR10 and HLG
- Dolby Audio for crisp, clear sound

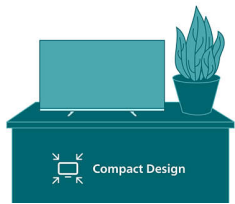
LED

2K LED TV

32PHS6000/12

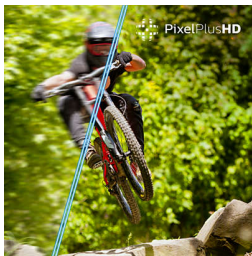
Highlights

Compact design



Size matters. With its small, lightweight and compact design, this smart TV is the perfect fit for any space. Blends in beautifully at home or on the go.

HD high resolution



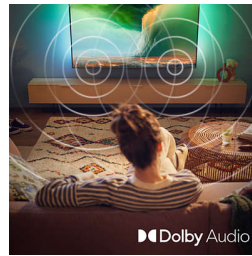
Clear images. Pixel Plus picture sharpness. With high resolution and defined imagery, this LED TV shows that every little detail counts.

HDR10/HLG



Brighter colours. Vivid tones. From the darkest scenes to the brightest light, clarity is everything. This is where high dynamic range impresses with clearer colour and contrast.

Dolby Audio

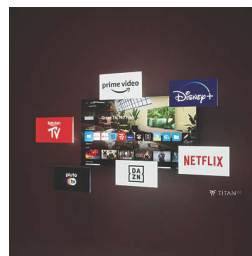


Listen. Hear each moment. This is crystal clear Dolby Audio. From dialogue to dance and from action movie moments to stunning nature scenes, you can experience clearer sound as you go.

Vocal Boost

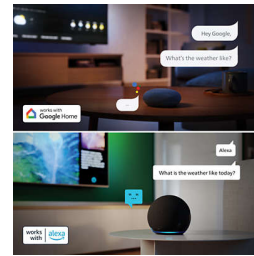
Hear each word clearly. Vocal Boost enables the listener to turn the dialogue volume up or down without any effect on the background sound. You won't miss a single moment now that each spoken sentence comes across with greater clarity.

Philips Smart TV Titan OS



The Philips Smart TV Titan OS platform brings what you love to watch, and fast. From sequels to series and documentaries to drama, everything you want is there at the touch of a button. Whatever you're looking to watch, keep all the best streaming apps easily within your reach.

Matter Smart Home compatible



Matter Smart Home compatibility means you can control your TV via Matter Smart Home app or voice control your TV via Alexa-enabled devices or via your Google smart speakers. This way, your voice can find movies, shows, receive recommendations and so much more.

European design

Finding a design that fits in perfectly with your needs can mean everything. Borderless frame. Defined stand. European know-how. This is where design, picture and sound really come together as the smarter choice.

Freedom of choice

Think versatility. Choose a TV that works best for you. From bedrooms to bathrooms and kitchens to campervans, its compact design fits in perfectly with your space.



HDR10



IntelliSound



Specifications

Picture/Display

Diagonal screen size (inch): 32 inch
Diagonal screen size (metric): 80 cm
Display: LED HD TV
Panel resolution: 1366 x 768p
Native refresh rate: 60 Hz
Picture engine: Pixel Plus HD
Picture enhancement: ECO, Crystal Clear, Home Cinema, Movie, Game, Monitor, Pixel Plus HD, Personal

Display input resolution

Resolution-Refresh rate: 576p - 50 Hz, 640 x 480 - 60 Hz, 720p - 50 Hz/60 Hz, 1366 x 768 - 60 Hz, 1920 x 1080p - 24/25/30/50/60 Hz

Tuner/Reception/Transmission

Digital TV: DVB-T/T2/T2-HD/C/S/S2
Signal strength indication
Teletext: 1000 page Hypertext
HEVC support

Smart TV

SmartTV apps*: Netflix*, HBO, BBC iPlayer, YouTube, Amazon Prime Video, Disney+
OS: TITAN OS
Memory size (Flash)*: 8 GB

Smart TV Features

Interactive TV: HbbTV
Voice assistant*: Works with Alexa, Works with Google Assistant
Smart Home experience: Control4, MATTER

Multimedia Applications

Video Playback Formats: AVI, MKV, HEVC, H.264/MPEG-4 AVC, MPEG1, MPEG2, MPEG4, VP9, HEVC (H.265), AV1
Music Playback Formats: MP3, WAV, AAC, FLAC
Subtitles Formats Support: SRT, SMI, SSA, SUB, ASS, TXT
Picture Playback Formats: JPEG, GIF, PNG, BMP, HEIF

Sound

Audio: 2.0 Channel
Output power (RMS): 12 W
Speaker configuration: 2 x 6 W full-range

speakers
Sound Enhancement: Dialogue, Music, Original, Entertainment, Equalizer, Vocal Boost, AVL Mode, Night mode
Sound Engine: Basic Sound Engine

Connectivity

Number of HDMI connections: 3
HDMI features: Audio Return Channel
EasyLink (HDMI-CEC): Remote control pass-through, System audio control, System standby, One touch play
Number of USBs: 2
Wireless connection: Wi-Fi 802.11n, 2 x 2, Single band
HDCP 2.3: Yes on all HDMI
HDMI ARC: Yes on HDMI1
EasyLink 2.0: External setting via TV UI, HDMI-CEC for Philips TV/SB

Supported HDMI video features

HDR: HLG, HDR10

Specifications

EU Energy card

EPREL registration numbers: 2227040

Energy class for SDR: E

On mode power demand for SDR:

22 kWh/1000h

Energy class for HDR: G

On mode power demand for HDR:

36 kWh/1000h

Off mode power consumption: n.a

Networked standby mode: 2.0 W

Panel technology used: LED LCD

Power

Mains power: AC 100-240 V 50/60 Hz

Standby power consumption: less than 0.5 W

Power Saving Features: Auto switch-off timer, Light sensor, Picture mute (for radio), Eco mode

Accessories

Included accessories: Power cord, 2 x AAA Batteries, Legal and safety brochure, Tabletop stand, Remote Control

Design

Colours of TV: Plastic black low bezel

Stand design: Plastic charcoal soap bar

Dimensions

Distance between 2 stands: 630 mm

Wall-mount compatible: 100 x 100 mm

TV without stand (W x H x D):

715 x 432 x 83 mm

TV with stand (W x H x D): 715 x 448 x 205 mm

Package carton (W x H x D): 790 x 500 x 123 mm

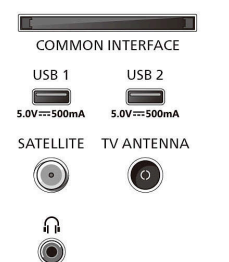
Weight of TV without stand: 3.45 kg

Weight of TV with stand: 3.5 kg

Weight incl. packaging: 4.6 kg

32PHS6000 / 40PFS6000

Side



Rear



- * This television contains lead only in certain parts or components where no technology alternatives exist in accordance with existing exemption clauses under the RoHS Directive.
- * The TV supports DVB reception for 'Free to air' broadcast. Specific DVB operators may not be supported. An up-to-date list can be found in the FAQ section of the Philips support website. For some operators Conditional Access and subscription are required. Contact your operator for more information.
- * Smart TV app availability varies by TV model and country. For more details, please visit: www.philips.com/smarttv.
- * Philips TV Remote app and related functionalities vary by TV model, operator and country, as well as smart device model and OS. For more details, please visit: www.philips.com/TVRemoteapp.
- * EPG and actual visibility (up to 8 days) is country- and operator-dependent.
- * Netflix subscription required. Subject to terms on <https://www.netflix.com>
- * Amazon Prime is available in selected languages and countries.
- * Amazon, Alexa and all related logos are trademarks of Amazon.com, Inc. or its affiliates. Amazon Alexa is available in selected languages and countries.
- * Over-the-top media services button on the remote control will be different in each country. Please refer to the actual product in the box.
- * Google Assistant is available in different languages and countries specific to product types.
- * Scope of voice control services via the TV varies according to country and language. For the latest information, please contact our customer care.
- * *Apple, AirPlay and Apple Home are trademarks of Apple Inc., registered in the U.S. and other countries and regions.