

# PHILIPS

Full HD gaming  
monitor

Fast IPS Gaming  
monitor

Evnia 3000

24 (23.8" / 60.5 cm diag.)

1920 x 1080 (Full HD)

24M2N3200L



## Broaden your gaming horizon

This 24-inch Fast IPS monitor brings sharp visuals to gaming. With its 180Hz refresh rate and 0.5ms Smart MBR, you can expect clear visuals and a high-quality all-around gaming experience.

### Features designed for gamers needs

- SmartImage game mode optimized for gamers
- LowBlue mode and Flicker-free easy-on-the eyes viewing
- EasySelect menu toggle key for quick on-screen menu access
- Smart Crosshair: for better aim and more fun

### Built for fast action

- 180Hz refresh rates for ultra-smooth, brilliant images
- 0.5 ms ultra-fast speed for crisp image and smooth gameplay
- Fast IPS Panel: For rapid and crystal-clear gaming
- Certified NVIDIA® G-SYNC® compatible for smooth fast gaming
- Low input lag reduces time delay between devices to monitor

### Immersive visuals

- 16:9 Full HD display for crisp detailed images
- High Dynamic Range (HDR) for more lifelike colorful visuals
- SmartContrast for rich black details

# Fast IPS Gaming monitor

Full HD gaming monitor

24M2N3200L/89

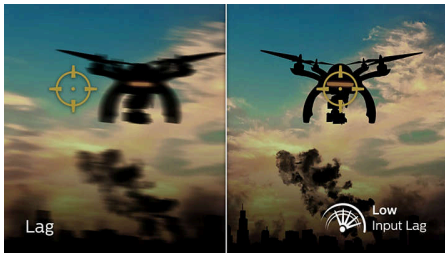
## Highlights

### 180Hz Gaming



You play intense, competitive gaming. You demand display with lag free, ultra-smooth images. This display redraws the screen image up-to 180 times per second, effectively faster than a standard display. A lower frame rate can make enemies appear to jump from spot to spot on the screen, making them difficult targets to hit. With 180Hz frame rate, you get those critical missing images on the screen which shows enemy movement in ultra-smooth motion so you can easily target them. With ultra-low input lag and no screen tearing, this Philips display is your perfect gaming partner.

### Low input lag



Input lag is the amount of time that elapses between performing an action with connected devices and seeing the result on screen. Low input lag reduces the time delay between entering a command from your devices to monitor, greatly improve on playing twitch-sensitive video games, particularly important to whom plays fast-paced, competitive games.

### 0.5 ms Smart MBR fast response



Philips Evnia with 0.5 ms Smart MBR effectively eliminates smearing and motion blur, delivers sharper and precise visuals to enhance gaming experience. Fast-moving action and dramatic transitions will be rendered smoothly. Best choice for playing thrilling and twitch-sensitive games.

### Fast IPS



This feature is made for action-packed gameplay. Not only does it produce virtually blur-free gaming, but it also pairs well with high frame rates for the best and sharpest imagery, guaranteed.

### 16:9 Full HD display



Picture quality matters. Regular displays deliver quality, but you expect more. This display features enhanced Full HD 1920 x 1080

resolution. With Full HD for crisp detail paired with high brightness, incredible contrast and realistic colors expect a true to life picture.

### High Dynamic Range (HDR)



High Dynamic Range delivers a dramatically different visual experience. With astonishing brightness, incomparable contrast and captivating color, images come to life with much greater brightness while also featuring much deeper, more nuanced darks. It renders a fuller palette of rich new colors never before seen on display, giving you a visual experience that engages your senses and inspires emotions.

### SmartContrast



SmartContrast is a Philips technology that analyzes the contents you are displaying, automatically adjusting colors and controlling backlight intensity to dynamically enhance contrast for the best digital images and videos or when playing games where dark hues are displayed. When Economy mode is selected, contrast is adjusted and backlighting fine-tuned for just-right display of everyday office applications and lower power consumption.



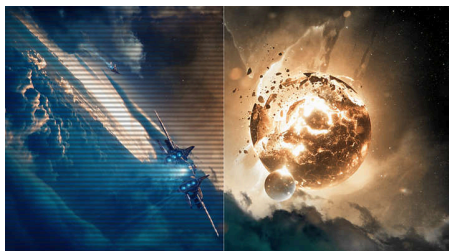
## Fast IPS Gaming monitor

Full HD gaming monitor

24M2N3200L/89

# Highlights

### LowBlue mode & Flicker-free



Our LowBlue Mode and Flicker-free technology have been developed to reduce eye strain and fatigue often caused by long hours in front of a monitor.

### EasySelect Menu Toggle Key



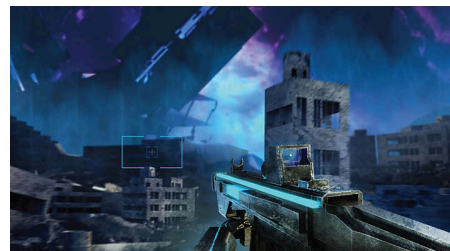
The discreetly placed EasySelect Menu Toggle Key allows you to make quick and easy adjustments to monitor settings in the On-Screen Display menu.

### SmartImage Game mode



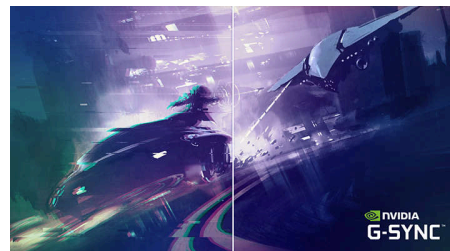
The new Philips gaming display has quick access OSD fine tuned for gamers, offering you multiple options. "FPS" mode (First person shooting) improves dark themes in games, allowing you to see hidden objects in dark areas. "Racing" mode adapts display with fastest response time, high color, along with image adjustments. "RTS" mode (Real time strategy) has a special SmartFrame mode which enables highlighting of specific area and allows for size and image adjustments. Gamer 1 and Gamer 2 enable you to save personal customized settings based on different games, ensuring best performance.

### Smart Crosshair



Color of Crosshair is set by default. When Smart Crosshair is on, the color will change as complementary color to the background color. Smart Crosshair enhances the accuracy of aiming so you can spot the enemies more easily.

### NVIDIA® G-SYNC® compatible



When playing intense games with high refresh rates, screen tearing may appear without optimal graphics synchronization. This Philips display is certified as NVIDIA® G-SYNC® compatible, reducing screen tearing and syncing your monitor's refresh rate with your graphic card's output for a smoother gaming experience. Scenes appear instantly, objects look sharper, and gameplay is smooth, giving you a stunning visual experience and a serious competitive edge.



# Fast IPS Gaming monitor

Full HD gaming monitor

24M2N3200L/89

## Specifications

### Picture/Display

**Panel Size:** 23.8 inch / 60.5 cm  
**Aspect ratio:** 16:9  
**LCD panel type:** IPS technology  
**Backlight type:** W-LED system  
**Pixel pitch:** 0.2745 x 0.2745 mm  
**Brightness:** 300 cd/m<sup>2</sup>  
**Display colors:** 16.7 M  
**Color gamut (typical):** DCI-P3:93%, RGB 126%, NTSC 113%, Adobe RGB 110%\*  
**Contrast ratio (typical):** 1000:1  
**SmartContrast:** Mega Infinity DCR  
**Response time (typical):** 1 ms (Gray to Gray)\*  
**Viewing angle:** 178° (H) / 178° (V), @ C/R > 10  
**Picture enhancement:** SmartImage game  
**Maximum resolution:** 1920x1080 @ 180 Hz (HDMI/DP)  
**Effective viewing area:** 527.04(H) x 296.46(V) mm  
**Scanning Frequency:** 30k-200kHz(H)/ 48-180Hz(V)  
**sRGB**  
**Flicker-free**  
**Pixel Density:** 91.79 PPI  
**LowBlue Mode**  
**Display Screen Coating:** Anti-Glare, 3H, Haze 25%  
**EasyRead**  
**Adaptive sync**  
**G-SYNC**  
**HDR:** HDR 10 supported  
**Smart MBR:** 0.5 ms \*  
**Smart Crosshair**  
**Shadow Boost**

### Connectivity

**Signal Input:** HDMI 2.0 x 1, DisplayPort 1.4 x 1  
**Sync Input:** Separate Sync  
**Audio (In/Out):** Headphone out  
**HDCP:** HDCP 1.4 (HDMI / DP), HDCP 2.2 (HDMI / DP)

### Convenience

**Plug & Play Compatibility:** DDC/CI, Mac OS X, sRGB, Windows 11 / 10  
**User convenience:** Power On/Off, Menu/OK, Input/Up, Game Settings/Down, SmartImage game/Back  
**OSD Languages:** Brazil Portuguese, Czech, Dutch, English, Finnish, French, German, Greek, Hungarian, Italian, Japanese, Korean, Polish, Portuguese, Russian, Spanish, Simplified Chinese, Swedish, Turkish, Traditional Chinese, Ukrainian  
**Other convenience:** Kensington lock, VESA mount (100x100mm), LowBlue Mode

### Stand

**Tilt:** -5/20 degree

### Power

**Power supply:** Internal, 100-240VAC, 50-60Hz  
**Off mode:** 0.3 W (typ.)  
**On mode:** 18.7 W (typ.)  
**Standby mode:** 0.5 W (typ.)  
**Power LED indicator:** Operation - White, Standby mode- White (blinking)

### Dimensions

**Packaging in mm (WxHxD):** 610 x 395 x 126 mm  
**Product without stand (mm):** 540 x 325 x 55 mm  
**Product with stand(max height):** 540 x 433 x 195 mm

### Weight

**Product with packaging (kg):** 5.39 kg  
**Product with stand (kg):** 3.26 kg  
**Product without stand (kg):** 2.65 kg

### Operating conditions

**Altitude:** Operation: +12,000ft (3,658m), Non-operation: +40,000ft (12,192m)  
**Temperature range (operation):** 0°C to 40 °C  
**MTBF:** 50,000 (Excluded backlight) hour(s)  
**Relative humidity:** 20%-80 %  
**Temperature range (storage):** -20°C to 60 °C

### Sustainability

**Environmental and energy:** RoHS  
**Recyclable packaging material:** 100 %  
**Post consumer recycled plastics:** 85%\*

### Compliance and standards

**Regulatory Approvals:** CB, CE Mark, INMETRO, KC, BSMI, VCCI, UKCA, EMF, FCC, ICES-003

### Cabinet

**Color:** Charcoal  
**Finish:** Textured



\* For best output performance, please always ensure that your graphic card is capable of achieving the maximum resolution and refresh rate of this Philips display.  
\* Response time value equal to SmartResponse  
\* Smart MBR is to adjust brightness for blur reduction, so cannot adjust brightness while Smart MBR is turned on. To reduce motion blur, LED backlight will strobe synchronously with screen refresh, which may cause noticeable brightness change.  
\* Smart MBR is gaming-optimized mode. Turn on Smart MBR may cause noticeable screen flickering. It is recommended to turn off when you are not using the gaming function.  
\* DCI-P3 Coverage based on CIE1976, sRGB Area based on CIE1931, NTSC Area and Adobe RGB Area based on CIE1976  
\* This monitor strives for sustainability: the stand's feet and headphone holder are made with 35% recycled plastic and monitor's chassis is made up of 85% post-consumer recycled plastic.  
\* The products and accessories listed on this leaflet may differ by country and region.  
\* NVIDIA® G-SYNC® support interface: DisplayPort  
\* Make sure to update NVIDIA® G-SYNC® driver to the latest version, see more information on NVIDIA website: <https://www.nvidia.com/>  
\* Make sure your graphic card supports NVIDIA® G-SYNC®  
\* The monitor may look different from feature images.  
\* The products and accessories listed on this leaflet may differ by country and region.