

PHILIPS

4K UHD gaming
monitor

Fast IPS Gaming
monitor

Evnia 5000

27" (68.5cm)

3840 x 2160 (4K UHD)

27M3N5840



Your gaming experience to the utmost

This 27-inch Fast IPS monitor brings color and 4K UHD picture quality to the forefront of your gaming experience. Color-popping DisplayHDR 400-grade imagery is guaranteed while the monitor's 160Hz refresh rate makes outlines sharp.

Features designed for gamers needs

- SmartImage game mode optimized for gamers
- Halolight: Add color to your game
- MultiView enables simultaneous dual connection and view
- LowBlue mode and Flicker-free easy-on-the eyes viewing
- EasySelect menu toggle key for quick on-screen menu access
- Smart Crosshair: for better aim and more fun
- SmartErgoBase enables people-friendly ergonomic adjustments

Built for fast action

- 160Hz refresh rates for ultra-smooth, brilliant images
- Fast IPS Panel: For rapid and crystal-clear gaming
- Low input lag reduces time delay between devices to monitor

Immersive visuals

- SmartContrast for rich black details
- UltraClear 4K UHD (3840x2160) resolution for precision

Fast IPS Gaming monitor

4K UHD gaming monitor

27M3N5840/93

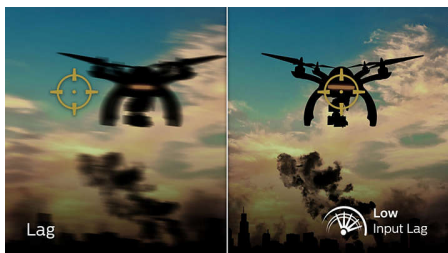
Highlights

160Hz Gaming



You play intense, competitive gaming. You demand display with lag free, ultra-smooth images. This Philips display redraws the screen image up-to 160 times per second, effectively faster than a standard display. A lower frame rate can make enemies appear to jump from spot to spot on the screen, making them difficult targets to hit. With 160Hz frame rate, you get those critical missing images on the screen which shows enemy movement in ultra-smooth motion so you can easily target them. With ultra-low input lag and no screen tearing, this Philips display is your perfect gaming partner.

Low input lag



Input lag is the amount of time that elapses between performing an action with connected devices and seeing the result on screen. Low input lag reduces the time delay between entering a command from your devices to monitor, greatly improve on playing twitch-sensitive video games, particularly important to whom plays fast-paced, competitive games.

Fast IPS



This feature is made for action-packed gameplay. Not only does it produce virtually blur-free gaming, but it also pairs well with high frame rates for the best and sharpest imagery, guaranteed.

UltraClear 4K UHD resolution



These Philips displays utilize high performance panels to deliver UltraClear, 4K UHD (3840 x 2160) resolution images. Whether you are demanding professional requiring extremely detailed images for CAD solutions, using 3D graphics applications or a financial wizard working on huge spreadsheets, Philips displays will make your images and graphics come alive.

SmartContrast



SmartContrast is a Philips technology that analyzes the contents you are displaying, automatically adjusting colors and controlling

backlight intensity to dynamically enhance contrast for the best digital images and videos or when playing games where dark hues are displayed. When Economy mode is selected, contrast is adjusted and backlighting fine-tuned for just-right display of everyday office applications and lower power consumption.

DisplayHDR 400



VESA-certified DisplayHDR 400 delivers a significant step-up from normal SDR displays. Unlike, other 'HDR compatible' screens, true DisplayHDR 400 produces astonishing brightness, contrast and colors. With global dimming and minimum 400 nits brightness, images come to life with notable highlights while featuring deeper, more nuanced blacks. It renders a fuller palette of rich new colors, delivering a visual experience that engages your senses.

LowBlue mode & Flicker-free



Our LowBlue Mode and Flicker-free technology have been developed to reduce eye strain and fatigue often caused by long hours in front of a monitor.



Fast IPS Gaming monitor

4K UHD gaming monitor

27M3N5840/93

Highlights

EasySelect Menu Toggle Key



The discreetly placed EasySelect Menu Toggle Key allows you to make quick and easy adjustments to monitor settings in the On-Screen Display menu.

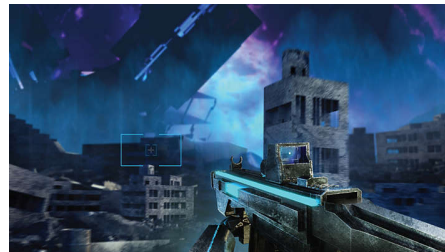
SmartImage Game mode



The new Philips gaming display has quick access OSD fine tuned for gamers, offering you multiple options. "FPS" mode (First person shooting) improves dark themes in games, allowing you to see hidden objects in dark areas. "Racing" mode adapts display with fastest response time, high color, along with image adjustments. "RTS" mode (Real time strategy) has a special SmartFrame mode which enables highlighting of specific area and allows for size and image

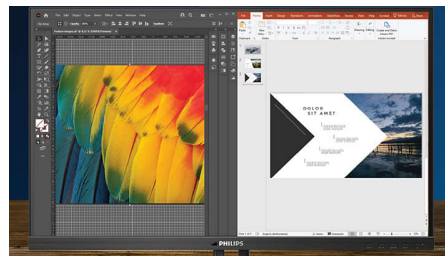
adjustments. Gamer 1 and Gamer 2 enable you to save personal customized settings based on different games, ensuring best performance.

Smart Crosshair



Color of Crosshair is set by default. When Smart Crosshair is on, the color will change as complementary color to the background color. Smart Crosshair enhances the accuracy of aiming so you can spot the enemies more easily.

MultiView technology



With the ultra-high resolution Philips MultiView display you can now experience a world of connectivity. MultiView enables active dual

connect and view so that you can work with multiple devices like a PC and notebook simultaneously, for complex multi-tasking.

SmartErgoBase



The SmartErgoBase is a monitor base that delivers ergonomic display comfort and provides cable management. The base can swivel, tilt and rotate to various angles to ensure maximum comfort. The height adjustable stand guarantees the optimal viewing level, reducing the physical strains of a long workday, while cable management reduces cable clutter and keeps the workspace neat and professional.

Fast IPS Gaming monitor

4K UHD gaming monitor

27M3N5840/93

Specifications

Picture/Display

Panel Size: 27"/68.5cm
Aspect ratio: 16:9
LCD panel type: IPS technology
Backlight type: W-LED system
Pixel pitch: 0.15525mm(H) x 0.15525mm(V)
Brightness: 350 cd/m²
Display colors: 1.07B (8bits+FRC)
Color gamut (typical): sRGB 99% , DCI-P3 95% , AdobeRGB 90% , NTSC 100%
Contrast ratio (typical): 1000:1
SmartContrast: Mega Infinity DCR
Response time (typical): 1 ms (Gray to Gray)*
Viewing angle: 178° (H) / 178° (V), @ C/R > 10
Picture enhancement: SmartImage game
Maximum resolution: 3840 x 2160 @ 160Hz (HDMI), 3840 x 2160 @ 160Hz (DP), 10bits, RGB/444
Effective viewing area: 596.16mm(H) x 335.34mm(V)
Scanning Frequency: HDMI: 30-349 kHz(H)/ 23-160 Hz(V), DP:30- 349 kHz(H)/ 48 -160 Hz(V)
sRGB
Delta E: < 2 (sRGB)
Flicker-free
Pixel Density: 163 PPI
LowBlue Mode
Display Screen Coating: Anti-Glare, 3H, Haze 25%
Low Input Lag
EasyRead
Adaptive sync
HDR: HDR 400
Smart Crosshair
Shadow Boost

Connectivity

Signal Input: HDMI 2.1 x 2, DisplayPort 1.4 x 1
Sync Input: Separate Sync
Audio (In/Out): Headphone out
HDCP: HDCP 1.4 (HDMI / DisplayPort), HDCP 2.3 (HDMI / DisplayPort)

Convenience

Plug & Play Compatibility: DDC/CI, Mac OS X, sRGB, Windows 11 / 10
User convenience: Power On/Off, Menu/OK, Input/Up, Game Mode/Down, SmartImage game/Back
OSD Languages: Brazil Portuguese, Czech, Dutch, English, Finnish, French, German, Greek, Hungarian, Italian, Japanese, Korean, Polish,

Portuguese, Russian, Spanish, Simplified Chinese, Swedish, Turkish, Traditional Chinese, Ukrainian
Other convenience: Kensington lock, VESA mount (100x100mm)
MultiView: PIP/PBP mode, 2x devices
Ambiglow: Halolight

Stand

Height adjustment: 130 mm
Pivot: -/+ 90 degree
Swivel: -/+ 45 degree
Tilt: -5/20 degree

Power

Power supply: Internal, 100-240VAC, 50-60Hz
Off mode: 0.3 W (typ.)
On mode: 40.2 W (typ.)
Standby mode: 0.5 W (typ.)
Power LED indicator: Operation - White, Standby mode- White (blinking)

Dimensions

Packaging in mm (WxHxD): 780 x 504 x 230 mm
Product without stand (mm): 613.44 x 366.86 x 58.3 mm
Product with stand(max height): 613.44 x 537.6 x 257.15 mm

Weight

Product with packaging (kg): 10.1 kg
Product with stand (kg): 5.9 kg
Product without stand (kg): 4.52 kg

Operating conditions

Altitude: Operation: +12,000ft (3,658m), Non-operation: +40,000ft (12,192m)
Temperature range (operation): 0°C to 40 °C
MTBF: 30,000 (Excluded backlight) hour(s)
Relative humidity: 20%-80 %
Temperature range (storage): -20°C to 60 °C

Sustainability

Environmental and energy: RoHS
Recyclable packaging material: 100 %

Compliance and standards

Regulatory Approvals: CCC, CEL

Cabinet

Color: Dark Slate
Finish: Textured



* "IPS" word mark / trademark and related patents on technologies belong to their respective owners.
* For best output performance, please always ensure that your graphic card is capable of achieving the maximum resolution and refresh rate of this Philips display.
* Response time value equal to SmartResponse
* sRGB Coverage based on CIE1931, Adobe RGB and DCI-P3 Coverage based on CIE1976, NTSC Area based on CIE1976.
* The products and accessories listed on this leaflet may differ by country and region.
* The monitor may look different from feature images.