

# PHILIPS

## EVNIA

Quad HD gaming  
monitor

Fast IPS Gaming  
monitor

Evnia 5000

27" (68.5 cm)

2560 x 1440 (QHD)

27M2N5511P



### Your gaming experience to the utmost

This Fast IPS monitor showcases 240Hz of speed and 1ms MPRT for seamless gameplay. Not only that, but gamers can expect high-quality HDR 400 imagery at even the highest frame rates.

#### Features designed for gamers needs

- LowBlue Mode for easy on-the-eyes productivity
- SmartImage game mode optimized for gamers
- Smart Crosshair: for better aim and more fun
- SmartErgoBase enables people-friendly ergonomic adjustments

#### Built for fast action

- Low input lag reduces time delay between devices to monitor
- Ultra-fast 240 Hz refresh rate for virtually lag-free gaming
- 0.5 ms ultra-fast speed for crisp image and smooth gameplay

#### Immersive visuals

- Crystalclear images with Quad HD 2560 x 1440 pixels
- 1.07 billion colors for stunning color and finest gradations
- DisplayHDR 400 for more lifelike and outstanding visuals

#### Immersive visuals

- SmartContrast for deep black level details

# Fast IPS Gaming monitor

Quad HD gaming monitor

27M2N5511P/93

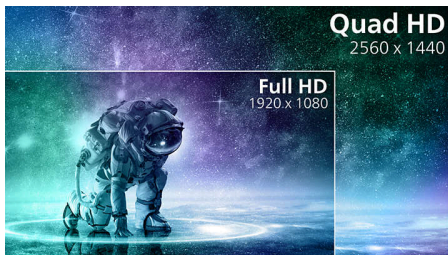
## Highlights

### SmartContrast



SmartContrast is a Philips technology that analyzes the contents you are displaying, automatically adjusting colors and controlling backlight intensity to dynamically enhance contrast for the best digital images and videos or when playing games where dark hues are displayed. When Economy mode is selected, contrast is adjusted and backlighting fine-tuned for just-right display of everyday office applications and lower power consumption.

### Crystalclear images



These Philips screens deliver Crystalclear, Quad HD 2560x1440 or 2560x1080 pixel images. Utilizing high performance panels with high density pixel count, enabled by high bandwidth sources like USB-C, Displayport, HDMI, these new displays will make your images and graphics come alive. Whether you are demanding professional requiring extremely detailed information for CAD-CAM solutions, using 3D graphic applications or a financial wizard working on huge spreadsheets, Philips displays will give you Crystalclear images.

### 1.07 billion colors



This display delivers outstanding color depth with 1.07 billion colors, and the finest gradation, for re-creating smooth, precise, and vivid image. Enjoy accurate and true-to-life visuals whether gaming, watching videos, or working on color critical work with graphics applications.

### DisplayHDR 400



VESA-certified DisplayHDR 400 delivers a significant step-up from normal SDR displays. Unlike, other 'HDR compatible' screens, true DisplayHDR 400 produces astonishing brightness, contrast and colors. With global dimming and minimum 400 nits brightness, images come to life with notable highlights while featuring deeper, more nuanced blacks. It renders a fuller palette of rich new colors, delivering a visual experience that engages your senses.

### Ultra-fast 240 Hz refresh rate



While playing the most intense engaging action-oriented games, ultra-fast 240 Hz refresh rate enhances an ultra-smooth, lag-free gaming

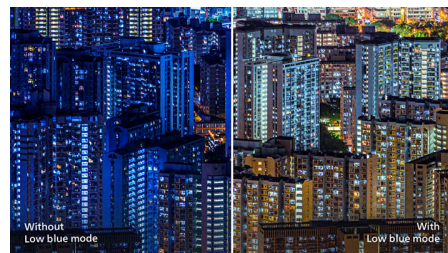
experience. This Philips display redraws the screen image up-to 240 times per second, effectively faster than a standard display. Especially for fast-paced games like FPS and racing games, 240 Hz gives a superior motion and clarity visuals. With Philips 240 Hz display, action sequences in gameplay look judder-free and ghost-free. You will experience deeper immersion and feeling alive in game.

### 0.5 ms MPRT response



Philips display with 0.5 ms MPRT effectively eliminates smearing and motion blur, delivers sharper and precise visuals to enhance gaming experience. Fast-moving action and dramatic transitions will be rendered smoothly. Best choice for playing thrilling and twitch-sensitive games.

### LowBlue Mode



Studies have shown that just as ultra-violet rays can cause eye damage, shortwave length blue light rays from LED displays can cause eye damage and affect vision over time. Developed for wellbeing, Philips LowBlue Mode setting uses a smart software technology to reduce harmful shortwave blue light.



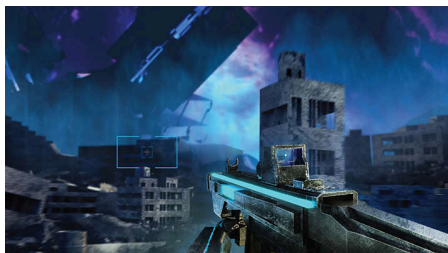
## Fast IPS Gaming monitor

Quad HD gaming monitor

27M2N5511P/93

# Highlights

### Smart Crosshair



Color of Crosshair is set by default. When Smart Crosshair is on, the color will change as complementary color to the background color. Smart Crosshair enhances the accuracy of aiming so you can spot the enemies more easily.

### SmartImage Game mode



The new Philips gaming display has quick access OSD fine tuned for gamers, offering you multiple options. "FPS" mode (First person shooting) improves dark themes in games, allowing you to see hidden objects in dark areas. "Racing" mode adapts display with fastest response time, high color, along with image adjustments. "RTS" mode (Real time strategy) has a special SmartFrame mode which enables highlighting of specific area and allows for size and image adjustments. Gamer 1 and Gamer 2 enable you to save personal customized settings based on different games, ensuring best performance.

### SmartErgoBase



The SmartErgoBase is a monitor base that delivers ergonomic display comfort and provides cable management. The base can swivel, tilt and rotate to various angles to ensure maximum comfort. The height adjustable stand guarantees the optimal viewing level, reducing the physical strains of a long workday, while cable management reduces cable clutter and keeps the workspace neat and professional.



Quad HD



VESA CERTIFIED  
DisplayHDR 400



Low Input Lag



240Hz



Fast Response  
0.5ms



LowBlue Mode

# Fast IPS Gaming monitor

Quad HD gaming monitor

27M2N5511P/93

## Specifications

### Picture/Display

**Panel Size:** 27 inch / 68.5 cm  
**Aspect ratio:** 16:9  
**LCD panel type:** IPS technology  
**Pixel pitch:** 0.2331 x 0.2331 mm  
**Brightness:** 400 cd/m<sup>2</sup>  
**Display colors:** 1.07B (8-bits+FRC)\*  
**Color gamut (typical):** DCI-P3:95.59%, sRGB: 100.06%, NTSC 107.53%, Adobe RGB 105.69%; \*  
**Contrast ratio (typical):** 1000:1  
**SmartContrast:** Mega Infinity DCR  
**Response time (typical):** 1 ms (Gray to Gray)\*  
**Viewing angle:** 178° (H) / 178° (V), @ C/R > 10  
**Picture enhancement:** SmartImage game  
**Maximum resolution:** 2560 x 1440 @ 144 Hz (HDMI); 2560 x 1440 @ 240 Hz\* (DP)  
**Effective viewing area:** 596.736 (H) x 335.664 (V)  
**Scanning Frequency:** HDMI: 30K - 230 KHz (H) / 48 - 144 Hz (V); DP: 30K - 360 KHz (H) / 48 - 240 Hz (V)  
**sRGB**  
**Delta E:** < 2 (sRGB)  
**Flicker-free**  
**Pixel Density:** 108.79 PPI  
**LowBlue Mode**  
**Display Screen Coating:** Anti-Glare, 3H, Haze 25%  
**SmartUniformity:** 93~105%  
**MPRT:** 0.5 ms  
**Low Input Lag**  
**Adaptive sync**  
**HDR:** Display HDR 400 certified  
**Smart Crosshair**  
**Shadow Boost**  
**Smart MBR**

### Connectivity

**Signal Input:** HDMI 2.0 x 2, DP 1.4 X1  
**Sync Input:** Separate Sync  
**Audio (In/Out):** Headphone out  
**HDCP:** HDCP 1.4 (HDMI/DP), HDCP 2.2 (HDMI/DP)

### Convenience

**Plug & Play Compatibility:** DDC/CI, Mac OS X, sRGB, Windows 11 / 10  
**User convenience:** Power On/Off, Menu/OK, Input/Up, Game Settings/Down, SmartImage game/Back  
**OSD Languages:** Brazil Portuguese, Czech, Dutch, English, Finnish, French, German, Greek, Hungarian, Italian, Japanese, Korean, Polish, Portuguese, Russian, Spanish, Simplified Chinese, Swedish, Turkish, Traditional Chinese, Ukrainian  
**Other convenience:** Kensington lock, VESA mount (100x100mm), Halolight

### Stand

**Height adjustment:** 130 mm  
**Pivot:** +/- 90 degree  
**Swivel:** +/- 30 degree  
**Tilt:** -5/20 degree

### Power

**Power supply:** 100-240VAC, 50-60Hz, Internal  
**Off mode:** 0.3 W (typ.)  
**On mode:** 23.5 W (typ.)  
**Standby mode:** 0.5 W (typ.)  
**Power LED indicator:** Operation - White, Standby mode- White (blinking)

### Dimensions

**Packaging in mm (WxHxD):** 731 x 467 x 191 mm  
**Product without stand (mm):** 613 x 367 x 52 mm  
**Product with stand(max height):** 613 x 518 x 247 mm

### Weight

**Product with packaging (kg):** 8.75 kg  
**Product with stand (kg):** 5.63 kg  
**Product without stand (kg):** 4.22 kg

### Operating conditions

**Altitude:** Operation: +12,000ft (3,658m), Non-operation: +40,000ft (12,192m)  
**Temperature range (operation):** 0°C to 40 °C  
**MTBF:** 30,000 hrs (Excluding backlight) hour(s)  
**Relative humidity:** 20%-80 %  
**Temperature range (storage):** -20°C to 60 °C

### Sustainability

**Environmental and energy:** RoHS

### Compliance and standards

**Regulatory Approvals:** CEL, CCC

### Cabinet

**Color:** White  
**Finish:** Textured

### Design

**Designed in Amsterdam, NL**



\* "IPS" word mark / trademark and related patents on technologies belong to their respective owners.  
\* The maximum resolution works for DP input only.  
\* For best output performance, please always ensure that your graphic card is capable of achieving the maximum resolution and refresh rate of this Philips display.  
\* Response time value equal to SmartResponse  
\* MPRT is to adjust brightness for blur reduction, so cannot adjust brightness while MPRT is turned on. To reduce motion blur, LED backlight will strobe synchronously with screen refresh, which may cause noticeable brightness change.  
\* MPRT is gaming-optimized mode. Turn on MPRT may cause noticeable screen flickering. It is recommended to turn off when you are not using the gaming function.  
\* 10bits color only can be reached by DP, QHD@180Hz  
\* The products and accessories listed on this leaflet may differ by country and region.  
\* DCI-P3 Coverage based on CIE1976, sRGB Coverage based on CIE1931, NTSC Area and Adobe RGB Area based on CIE1976  
\* The monitor may look different from feature images.