

# PHILIPS

WQHD gaming  
monitor

Curved Fast VA  
Gaming monitor

Evnia 5000

34" (86.36 cm)

3440 x 1440 (WQHD)

34M2C5500



## Your gaming experience to the utmost

This monitor is equipped with a Fast VA panel that can reach up to 180Hz while maintaining crisp and clear picture quality. Not to mention, its 0.5ms Smart MBR response time and low input lag reduces blur and ensures smooth gameplay.

### Features designed for gamers needs

- SmartImage game mode optimized for gamers
- LowBlue mode and Flicker-free easy-on-the eyes viewing
- Tilt, swivel and height-adjust for an ideal viewing position
- EasySelect menu toggle key for quick on-screen menu access
- Smart Crosshair: for better aim and more fun

### Built for fast action

- 180Hz refresh rates for ultra-smooth, brilliant images
- Fast VA Panel: For sharp imagery at high frame rates
- 0.5 ms ultra-fast speed for crisp image and smooth gameplay
- Low input lag reduces time delay between devices to monitor

### Immersive visuals

- SmartContrast for rich black details
- Curved display design for more immersive experience
- CrystalClear images with UltraWide QHD 3440 x 1440 pixels

# Curved Fast VA Gaming monitor

WQHD gaming monitor

34M2C5500/89

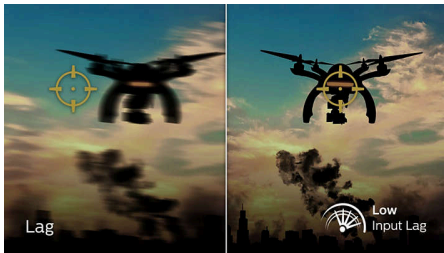
## Highlights

### 180Hz Gaming



You play intense, competitive gaming. You demand display with lag free, ultra-smooth images. This display redraws the screen image up-to 180 times per second, effectively faster than a standard display. A lower frame rate can make enemies appear to jump from spot to spot on the screen, making them difficult targets to hit. With 180Hz frame rate, you get those critical missing images on the screen which shows enemy movement in ultra-smooth motion so you can easily target them. With ultra-low input lag and no screen tearing, this Philips display is your perfect gaming partner.

### Low input lag



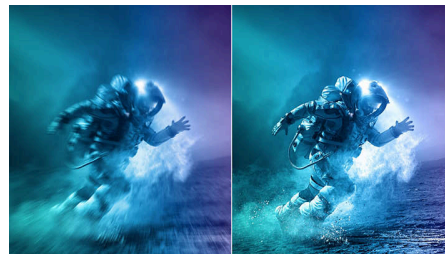
Input lag is the amount of time that elapses between performing an action with connected devices and seeing the result on screen. Low input lag reduces the time delay between entering a command from your devices to monitor, greatly improve on playing twitch-sensitive video games, particularly important to whom plays fast-paced, competitive games.

### 0.5 ms Smart MBR fast response



Philips Evnia with 0.5 ms Smart MBR effectively eliminates smearing and motion blur, delivers sharper and precise visuals to enhance gaming experience. Fast-moving action and dramatic transitions will be rendered smoothly. Best choice for playing thrilling and twitch-sensitive games.

### Fast VA



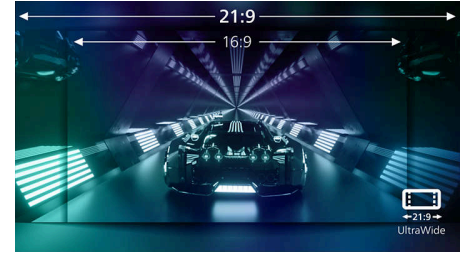
This feature is made for action-packed gameplay. Not only does it produce virtually blur-free gaming, but it also pairs well with high frame rates for the best and sharpest imagery, guaranteed.

### Curved display design



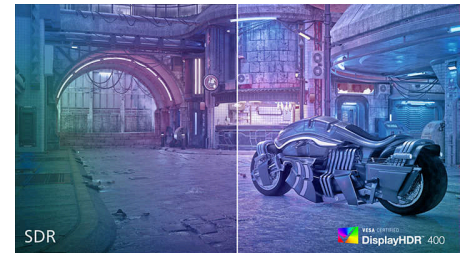
Desktop monitors offer a personal user experience, which suits a curve design very well. The curved screen provides a pleasant yet subtle immersion effect, which focuses on you at the center of your desk.

### UltraWide CrystalClear images



These Philips screens deliver CrystalClear, UltraWide Quad HD 3440 x 1440 pixel images. Utilizing high performance panels with high-density pixel count, 178/178 wide viewing angles, these new displays will make your images and graphics come alive. The UltraWide 21:9 format enables more productivity with more room for side-by-side comparisons and more viewable spreadsheet columns. Whether you are demanding professional requiring extremely detailed information for CAD-CAM solutions, or a financial wizard working on huge spreadsheets, Philips displays delivers CrystalClear images.

### DisplayHDR 400



VESA-certified DisplayHDR 400 delivers a significant step-up from normal SDR displays. Unlike, other 'HDR compatible' screens, true DisplayHDR 400 produces astonishing brightness, contrast and colors. With global dimming and minimum 400 nits brightness, images come to life with notable highlights while featuring deeper, more nuanced blacks. It renders a fuller palette of rich new colors, delivering a visual experience that engages your senses.



# Curved Fast VA Gaming monitor

WQHD gaming monitor

34M2C5500/89

## Highlights

### SmartContrast



SmartContrast is a Philips technology that analyzes the contents you are displaying, automatically adjusting colors and controlling backlight intensity to dynamically enhance contrast for the best digital images and videos or when playing games where dark hues are displayed. When Economy mode is selected, contrast is adjusted and backlighting fine-tuned for just-right display of everyday office applications and lower power consumption.

### LowBlue mode & Flicker-free



Our LowBlue Mode and Flicker-free technology have been developed to reduce eye strain and fatigue often caused by long hours in front of a monitor.

### EasySelect Menu Toggle Key



The discreetly placed EasySelect Menu Toggle Key allows you to make quick and easy adjustments to monitor settings in the On-Screen Display menu.

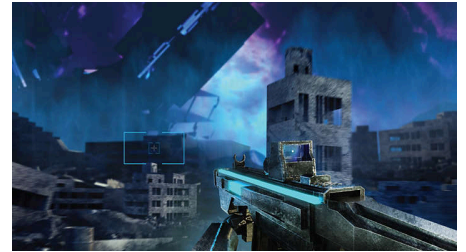
### SmartImage Game mode



The new Philips gaming display has quick access OSD fine tuned for gamers, offering you multiple options. "FPS" mode (First person shooting) improves dark themes in games, allowing you to see hidden objects in dark areas. "Racing" mode adapts display with fastest response time, high color, along with image adjustments. "RTS" mode (Real time strategy) has a special SmartFrame mode which enables highlighting of specific area and allows for size and image

adjustments. Gamer 1 and Gamer 2 enable you to save personal customized settings based on different games, ensuring best performance.

### Smart Crosshair



Color of Crosshair is set by default. When Smart Crosshair is on, the color will change as complementary color to the background color. Smart Crosshair enhances the accuracy of aiming so you can spot the enemies more easily.

### Compact Ergo Base



The Compact Ergo Base is a people-friendly Philips monitor base that tilts, swivels and height-adjusts so each user can position the monitor for maximum viewing comfort and efficiency.



# Specifications

## Picture/Display

**Panel Size:** 34 inch / 86.36 cm

**Aspect ratio:** 21:9

**Monitor Panel Type:** VA, 1500R (curvature)

**Pixel pitch:** 0.23175 x 0.23175mm

**Brightness:** 430nits; 460nits (HDR peak) nit

**Display colors:** 1.07G (8bits+FRC) \*

**Color gamut (typical):** Adobe RGB 91%; DCI-P3:95%, sRGB: 126%, NTSC 87% \*

**Contrast ratio (typical):** 4000:1

**SmartContrast:** Mega Infinity DCR

**Viewing angle:** 178° (H) / 178° (V), @ C/R > 10

**Picture enhancement:** SmartImage game

**Maximum resolution:** 3440x1440@ 180 Hz (DP), 8bits ; 3440x1440@100Hz (HDMI), 8bits

**Effective viewing area:** 797.22(H)x333.72(V)mm - at a 1500R curvature\*\*

**Scanning Frequency:** HDMI: 30 - 160 kHz (H) / 48 - 100 Hz (V), DP: 30 - 275 kHz (H) / 48 - 180 Hz (V) sRGB

**Delta E:** <2 (sRGB)

**Flicker-free**

**Pixel Density:** 109.68 PPI

**LowBlue Mode**

**Display Screen Coating:** Anti-glare, 25%, 3H

**SmartUniformity:** 93~105%

**Low Input Lag**

**EasyRead**

**Adaptive sync**

**HDR:** HDR 400 Supported

**Stark Shadow Boost**

**Backlight type:** W-LED

**Smart MBR:** 0.5ms\*

**Smart Crosshair**

**Smart Response:** 1ms (Gray to Gray)\*

## Connectivity

**Signal Input:** HDMI 2.0 x 2, DisplayPort 1.4 x 1

**Sync Input:** Separate Sync

**Audio (In/Out):** Headphone out

**HDCP:** HDCP 1.4 (HDMI / DisplayPort), HDCP 2.2 (HDMI / DisplayPort)

**USB Hub:** USB 3.2, Gen 1, USB-B upstream x 1, USB-A downstream x 4 (1 for FC)

## Convenience

**Plug & Play Compatibility:** DDC/CI, Mac OS X, sRGB, Windows 11 / 10

**User convenience:** Power On/Off, Menu/OK, Input/Up, Game Settings/Down, SmartImage game/Back

**OSD Languages:** Brazil Portuguese, Czech, Dutch, English, Finnish, French, German, Greek, Hungarian, Italian, Japanese, Korean, Polish, Portuguese, Russian, Spanish, Simplified Chinese, Swedish, Turkish, Traditional Chinese, Ukrainian

**Other convenience:** Kensington lock, VESA mount (100x100mm), LowBlue Mode

**MultiView:** PIP/PBP mode, 2x devices

## Stand

**Height adjustment:** 130 mm

**Swivel:** -/+ 30 degree

**Tilt:** -5/20 degree

## Power

**Power supply:** Internal, 100-240VAC, 50-60Hz

**Off mode:** 0.3 W (typ.)

**On mode:** 54.2 W (typ.)

**Standby mode:** 0.5 W (typ.)

**Power LED indicator:** Operation - White, Standby mode- White (blinking)

## Dimensions

**Packaging in mm (WxHxD):** 980 x 525 x 226 mm

**Product without stand (mm):** 808 x 369 x 69 mm

**Product with stand(max height):** 808 x 564 x 294 mm

## Weight

**Product with packaging (kg):** 10.9 kg

**Product with stand (kg):** 8.43 kg

**Product without stand (kg):** 6.50 kg

## Operating conditions

**Altitude:** Operation: +12,000ft (3,658m), Non-operation: +40,000ft (12,192m)

**Temperature range (operation):** 0°C to 40 °C

**MTBF:** 50,000 hour(s)

**Relative humidity:** 20%-80 %

**Temperature range (storage):** -20°C to 60 °C

## Sustainability

**Environmental and energy:** RoHS

**Post consumer recycled plastics:** 85%\*

## Compliance and standards

**Regulatory Approvals:** CB, CE Mark, CEL, CCC, UKCA, EMF, FCC, ICES-003

## Cabinet

**Color:** Dark Slate

**Finish:** Textured



\* Radius of the arc of the display curvature in mm  
 \* Response time value equal to SmartResponse.  
 \* Adobe RGB and DCI-P3 Coverage based on CIE1976, sRGB Area based on CIE1931, NTSC Area based on CIE1976.  
 \* For best output performance, please always ensure that your graphic card is capable of achieving the maximum resolution and refresh rate of this Philips display.  
 \* Display colors: 10bits can be reached by DP@144Hz  
 \* Smart MBR is to adjust brightness for blur reduction, so cannot adjust brightness while Smart MBR is turned on. To reduce motion blur, LED backlight will strobe synchronously with screen refresh, which may cause noticeable brightness change.  
 \* Smart MBR is gaming-optimized mode. Turn on Smart MBR may cause noticeable screen flickering. It is recommended to turn off when you are not using the gaming function.  
 \* This monitor strives for sustainability: the stand's feet and headphone holder are made with 35% recycled plastic and monitor's chassis is made up of 85% post-consumer recycled plastic.  
 \* The monitor may look different from feature images.  
 \* The products and accessories listed on this leaflet may differ by country and region.