

# PHILIPS

Fast VA Gaming  
monitor

Gaming Monitor

Evnia 6000

27" (68.5cm)

3840 x 2160 (4K UHD)

27M2N6800ML



## Your gaming experience to the utmost

This monitor is made for speedy gaming. Its 165Hz refresh rate makes visuals smooth and crisp while this monitor's 4K UHD resolution produces the utmost picture quality at any frame rate.

### Features designed for gamers needs

- LowBlue mode and Flicker-free easy-on-the eyes viewing
- MultiView enables simultaneous dual connection and view
- Tilt, swivel and height-adjust for an ideal viewing position
- Smart Crosshair: for better aim and more fun

### Built for fast action

- 165Hz refresh rates for ultra-smooth, brilliant images
- Fast VA Panel: For sharp imagery at high frame rates
- Low input lag reduces time delay between devices to monitor

### Immersive visuals

- DisplayHDR 1000 for truly vivid details and realism
- Mini LED with local dimming 1152 zones
- UltraClear 4K UHD (3840x2160) resolution for precision

# Gaming Monitor

Fast VA Gaming monitor

27M2N6800ML/69

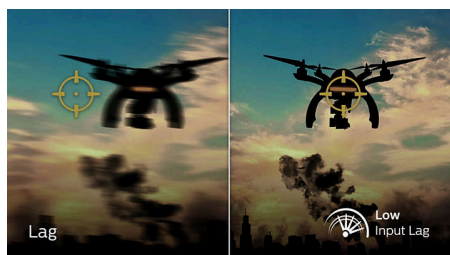
## Highlights

### 165Hz Gaming



You play intense, competitive gaming. You demand display with lag free, ultra-smooth images. This Philips display redraws the screen image up-to 165 times per second, effectively faster than a standard display. A lower frame rate can make enemies appear to jump from spot to spot on the screen, making them difficult targets to hit. With 165Hz frame rate, you get those critical missing images on the screen which shows enemy movement in ultra-smooth motion so you can easily target them. With ultra-low input lag and no screen tearing, this Philips display is your perfect gaming partner

### Low input lag



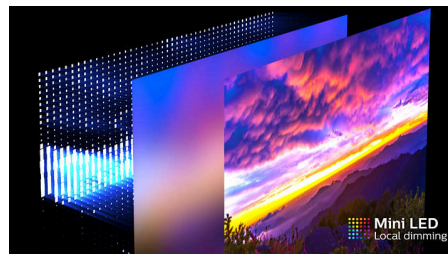
Input lag is the amount of time that elapses between performing an action with connected devices and seeing the result on screen. Low input lag reduces the time delay between entering a command from your devices to monitor, greatly improve on playing twitch-sensitive video games, particularly important to whom plays fast-paced, competitive games.

### Fast VA



This feature is made for action-packed gameplay. Not only does it produce virtually blur-free gaming, but it also pairs well with high frame rates for the best and sharpest imagery, guaranteed.

### Mini LED backlight



Mini LED backlighting improves control of lighting and contrast ratio. The small size of the mini LEDs forming the backlight allows for the creation of 1152 individually controlled zones delivering deeper blacks and brighter whites. Rich HDR content can now be viewed as it was intended with unmatched contrast and precise reproduction.

### UltraClear 4K UHD resolution



These Philips displays utilize high performance panels to deliver UltraClear, 4K UHD (3840 x 2160) resolution images. Whether you are

demanding professional requiring extremely detailed images for CAD solutions, using 3D graphics applications or a financial wizard working on huge spreadsheets, Philips displays will make your images and graphics come alive.

### VESA DisplayHDR 1000



VESA-certified DisplayHDR 1000 delivers a dramatically different visual experience vs. other 'HDR compatible' screens. Extreme deep blacks and bright whites contrast with brilliant colors, to bring out details that you've never experienced before. Gamers can spot enemies hiding the dark corners and shadows easily, and movie viewers can enjoy a more compelling and lifelike show. This Philips Momentum comes with several HDR modes, each optimized for your usage scenarios: HDR Game, HDR Movie, and HDR Photo.

### LowBlue mode & Flicker-free



Our LowBlue Mode and Flicker-free technology have been developed to reduce eye strain and fatigue often caused by long hours in front of a monitor.



# Gaming Monitor

Fast VA Gaming monitor

27M2N6800ML/69

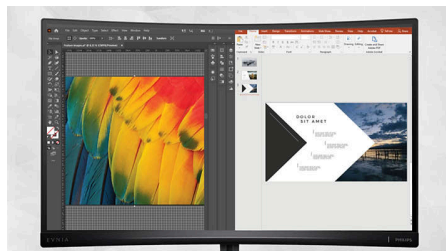
## Highlights

### Compact Ergo Base



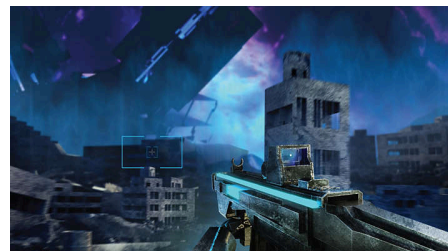
The Compact Ergo Base is a people-friendly Philips monitor base that tilts, swivels and height-adjusts so each user can position the monitor for maximum viewing comfort and efficiency.

### MultiView technology



With the ultra-high resolution Philips MultiView display you can now experience a world of connectivity. MultiView enables active dual connect and view so that you can work with multiple devices like a PC and notebook simultaneously, for complex multi-tasking.

### Smart Crosshair



Color of Crosshair is set by default. When Smart Crosshair is on, the color will change as complementary color to the background color. Smart Crosshair enhances the accuracy of aiming so you can spot the enemies more easily.



# Specifications

## Picture/Display

**Panel Size:** 27"/68.5cm

**Aspect ratio:** 16:9

**LCD panel type:** VA LCD

**Backlight type:** Mini LED with local dimming  
1152 zones

**Pixel pitch:** 0.1554x0.1554mm

**Brightness:** 450nits (HDR Off) nits, 700nits (HDR On) nits, 1200nits (HDR On, 10% of center) cd/m<sup>2</sup>

**Display colors:** 1.07 B (RGB 8 bits +FRC)

**Color gamut (typical):** Adobe RGB 95%; DCI-P3:97%, sRGB: 145%, NTSC 130%\*

**Contrast ratio (typical):** 3300:1

**SmartContrast:** Mega Infinity DCR

**Response time (typical):** 1ms (Gray to Gray)\*

**Viewing angle:** 178° (H) / 178° (V), @ C/R > 10

**Picture enhancement:** SmartImage game

**Maximum resolution:**

3840x2160 @ 165Hz (HDMI/DP)

**Effective viewing area:**

596.736(H)x335.664(V)mm

**Scanning Frequency:** 30-255Hz(H)/ 48-144Hz(V)  
sRGB

**Delta E:** < 2 (sRGB)

**Flicker-free**

**Pixel Density:** 163.18 PPI

**LowBlue Mode**

**Display Screen Coating:** Anti-Glare, 3H, Haze  
25%

**SmartUniformity:** 93 ~ 105%

**Low Input Lag**

**EasyRead**

**HDR:** HDR 1000 supported

**Smart Crosshair**

**Stark ShadowBoost**

## Connectivity

**Signal Input:** HDMI 2.1 x 2, DisplayPort 1.4 x 1

**Sync Input:** Separate Sync

**Audio (In/Out):** Audio out

**HDCP:** HDCP 1.4 (HDMI / DisplayPort), HDCP 2.2 (HDMI / DisplayPort)

**USB Hub:** USB 3.2 Gen 1 / 5 Gbps, USB-B

upstream x 1, USB-A downstream x 2 (with 2 for fast charge )

## Convenience

**Plug & Play Compatibility:** DDC/CI, Mac OS X, sRGB, Windows 11 / 10

**User convenience:** Power On/Off, Menu/OK, Input/Up, Game Settings/Down, SmartImage game/Back

**OSD Languages:** Brazil Portuguese, Czech, Dutch, English, Finnish, French, German, Greek, Hungarian, Italian, Japanese, Korean, Polish, Portuguese, Russian, Spanish, Simplified Chinese, Swedish, Turkish, Traditional Chinese, Ukrainian

**Other convenience:** Kensington lock, VESA mount (100x100mm)

**MultiView:** 2x devices, PIP/PBP mode

## Stand

**Height adjustment:** 130 mm

**Pivot:** 90 degree

**Swivel:** +/- 30 degree

**Tilt:** -5/20 degree

## Power

**Power supply:** Internal, 100-240VAC, 50-60Hz

**Off mode:** 0.3 W (typ.)

**On mode:** 57.29 W (typ.)

**Standby mode:** 0.5 W (typ.)

**Power LED indicator:** Operation - White, Standby mode- White (blinking)

## Dimensions

**Packaging in mm (WxHxD):** 840 x 478 x 188 mm

**Product without stand (mm):** 614 x 368 x 75 mm

**Product with stand(max height):** 614 x 525 x 261 mm

## Weight

**Product with packaging (kg):** 10.63 kg

**Product with stand (kg):** 7.36 kg

**Product without stand (kg):** 5.52 kg

## Operating conditions

**Altitude:** Operation: +12,000ft (3,658m), Non-operation: +40,000ft (12,192m)

**Temperature range (operation):** 0°C to 40 °C

**MTBF:** 50,000 (Excluded backlight) hour(s)

**Relative humidity:** 20%-80 %

**Temperature range (storage):** -20°C to 60 °C

## Sustainability

**Environmental and energy:** RoHS

**Recyclable packaging material:** 100 %

**Post consumer recycled plastics:** 85%\*

## Compliance and standards

**Regulatory Approvals:** CB, CE Mark, CEL, CCC, UKCA, EMF, FCC, ICES-003

## Cabinet

**Color:** Dark Slate

**Finish:** Textured

## Design

**Designed in Amsterdam, NL**

## What's in the box?

**Cables:** HDMI cable, DisplayPort cable, USB upstream cable, Power cable

**Monitor with stand**

**User Documentation**

**Accessory:** VESA bracket



\* The maximum resolution works for DP input only.

\* For best output performance, please always ensure that your graphic card is capable of achieving the maximum resolution and refresh rate of this Philips display.

\* Response time value equal to SmartResponse

\* Adobe RGB and DCI-P3 Coverage based on CIE1976, sRGB Area based on CIE1931, NTSC Area based on CIE1976.

\* The monitor may look different from feature images.

\* This monitor strives for sustainability: the stand's feet are made with 35% recycled plastic and monitor's chassis is made up of 85% post-consumer recycled plastic.