

# PHILIPS



QD OLED gaming  
monitor

Curved Gaming  
Monitor

Evnia 6000

34" (86.36 cm)

3440 x 1440 (WQHD)



34M2C6500AM

## Your gaming experience to the utmost

This monitor is built with features that make incredible visuals. With VESA ClearMR 9000 and DisplayHDR TrueBlack 400, this gaming monitor will produce imagery with deep contrast and sharp definition.

### Features designed for gamers' needs

- AI-enhanced Ambiglow: for intensified entertainment
- Evnia Precision Centre: Maximise Your Gaming Experience
- MultiView enables simultaneous dual connection and view
- Smart Crosshair: for better aim and more fun

### Built for fast action

- AMD FreeSync™ Premium Pro; smooth, low latency HDR gaming
- Certified NVIDIA® G-SYNC® compatible for smooth, fast gaming
- SmartImage game mode optimised for gamers
- VESA ClearMR 9000: for the highest image quality

### Immersive visuals

- Curved display design for a more immersive experience
- Ultra Wide-Color wider range of colours for a vivid picture
- CrystalClear images with UltraWide QHD 3440 x 1440 pixels
- DisplayHDR™ True Black 400 delivers incredible shadow details

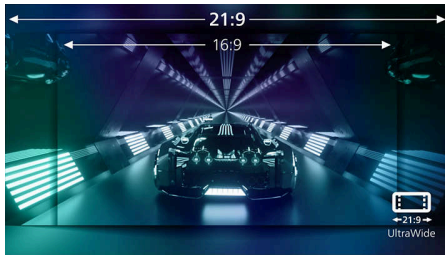
# Curved Gaming Monitor

QD OLED gaming monitor

34M2C6500AM/00

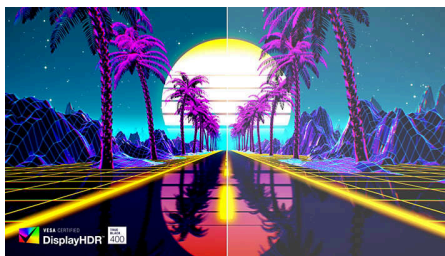
## Highlights

### UltraWide CrystalClear images



These Philips screens deliver Crystal Clear, UltraWide Quad HD 3440 x 1440 pixel images. Utilising high-performance panels with high-density pixel count and 178/178 wide viewing angles, these new displays will make your images and graphics come alive. The UltraWide 21:9 format enables more productivity with more room for side-by-side comparisons and more viewable spreadsheet columns. Whether you are a demanding professional requiring extremely detailed information for CAD-CAM solutions or a financial wizard working on huge spreadsheets, Philips displays deliver Crystal Clear images.

### DisplayHDR™ True Black 400



This Philips monitor is certified with VESA DisplayHDR™ True Black 400, delivering stunningly accurate shadow details with deeper blacks for a remarkable visual experience compared with conventional monitors of the same peak luminance. This Philips monitor comes with several HDR modes, each optimised for your usage scenarios: HDR Game, HDR Movie, HDR Photo and VESA DisplayHDR-certified level.

### Curved display design



Desktop monitors offer a personal user experience, which suits a curved design very well. The curved screen provides a pleasant yet subtle immersion effect, which focuses on you at the centre of your desk.

### QD OLED technology



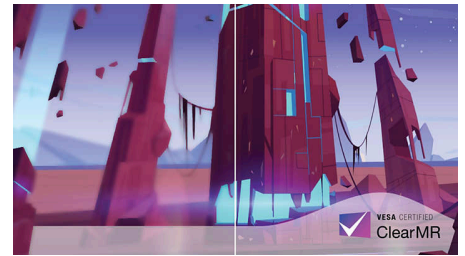
QD-OLED represents a hybrid approach that marries OLED panels and quantum dot technology. By combining what's best of both, QD-OLED guarantees high contrast, deep blacks and unlimited viewing angles, with a higher peak brightness and more vibrant colours.

### Ultra Wide-Color Technology



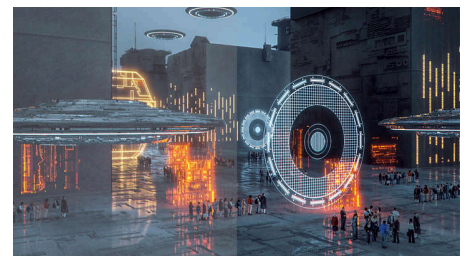
Ultra Wide-Color Technology delivers a wider spectrum of colours for a more brilliant picture. The Ultra Wide-Color wider "colour gamut" produces more natural-looking greens, vivid reds and deeper blues. Bring media entertainment, images and even productivity more alive with vivid colours from Ultra Wide-Color Technology.

### VESA ClearMR 9000



Previously, methods to test blurry image quality were measured through MRPT. VESA Certified ClearMR acts as an alternative to MRPT in which blur is tested with a digital high-speed camera. For monitors that are sent in and certified through VESA Certified ClearMR, you can rest assured that you will have an accurate assessment of the monitor's blur quality. Each certification is defined through a CMR range, with the highest tier being VESA ClearMR 9000. As this monitor is certified as ClearMR 9000, it has the highest classification of image quality, meaning the least amount of overall blur.

### SmartImage Game mode



The new Philips gaming display has quick-access OSD fine-tuned for gamers, offering you multiple options. "FPS" mode (First person shooting) improves dark themes in games, allowing you to see hidden objects in dark areas. "Racing" mode adapts the display with the fastest response time and high colour, along with image adjustments. "RTS" mode (Real-time strategy) has a special SmartFrame mode that enables highlighting of specific area and allows for size and image adjustments. Gamer 1 and Gamer 2 enable you to save personal customised settings based on different games, ensuring best performance.



CurvedDisplay



Ultra Wide Color



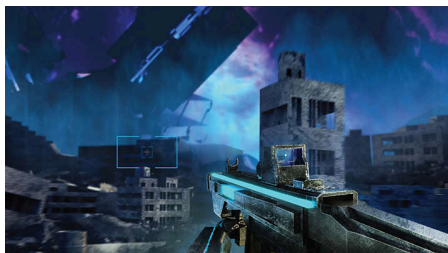
# Curved Gaming Monitor

QD OLED gaming monitor

34M2C6500AM/00

## Highlights

### Smart Crosshair



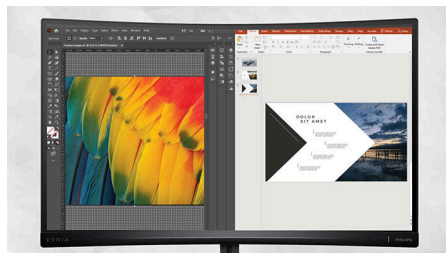
Colour of Crosshair is set by default. When Smart Crosshair is on, the colour will change as a complementary colour to the background colour. Smart Crosshair enhances the aiming accuracy so you can spot the enemies more easily.

### AI-enhanced Ambiglow



Our AI-enhanced processor analyses the incoming image content and continuously adapts the colour and brightness of the emitted light to match the image. This feature adds a new dimension to your viewing experience. The innovative Ambiglow uses its AI capabilities to create a truly immersive and customisable gaming experience. From filling your gaming room with colour to feeling like you are part of the game, the AI-enhanced Ambiglow is made to make your gaming experience the best it's ever been by combining intelligence, colour and light.

### MultiView technology



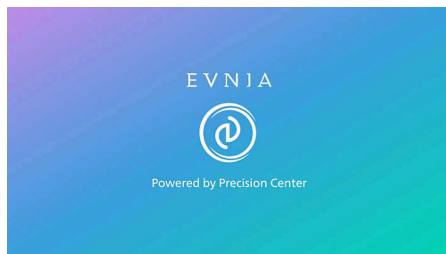
With the ultra-high resolution Philips MultiView display, you can now experience a world of connectivity. MultiView enables active dual connect and view so that you can work with multiple devices like a PC and notebook simultaneously, for complex multitasking.

### AMD FreeSync™ Premium Pro



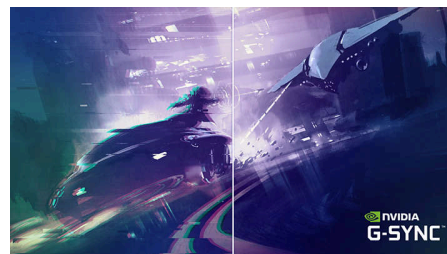
Gaming shouldn't be a choice between choppy gameplay or broken frames. AMD FreeSync™ Premium Pro provides the true HDR gaming experience: a combination of smooth gaming at peak performance and exceptional high dynamic range visuals while still maintaining low latency.

### Evnia Precision Centre



Evnia Precision Centre is an easy-to-use software designed to optimise and personalise your Evnia monitor. Whether you're a casual or competitive gamer, it offers a wide range of customisation options to match your unique gaming style. With intuitive controls and seamless navigation, Evnia Precision Centre gives you full control, providing everything you need to elevate your gaming to the next level — right at your fingertips.

### NVIDIA® G-SYNC® compatible



When playing intense games with high refresh rates, screen tearing may appear without optimal graphics synchronisation. This Philips display is certified as NVIDIA® G-SYNC® compatible, reducing screen tearing and syncing your monitor's refresh rate with your graphic card's output for a smoother gaming experience. Scenes appear instantly, objects look sharper, and gameplay is smooth, giving you a stunning visual experience and a serious competitive edge.



CurvedDisplay



Ultra Wide Color



# Curved Gaming Monitor

QD OLED gaming monitor

34M2C6500AM/00

## Specifications

### Picture/Display

**Panel Size:** 34 inch/86.36 cm

**Aspect ratio:** 21:9

**Monitor Panel Type:** QD OLED

**Pixel pitch:** 0.2315 x 0.2315 mm

**Brightness:** SDR: 250 (APL 100%) nits, HDR: 450

(APL 10%) nits, HDR E/P: 1000 (APL 3%) nit

**Display colours:** Colour support 1.07 billion colours (10 bit)\*

**Colour gamut (typical):** sRGB 148.8%\*, Adobe RGB 97.8%\*

**Colour gamut (min.):** DCI-P3: 99.3%\*

**Contrast ratio (typical):** 1,000,000:1

**SmartContrast:** Mega Infinity DCR

**Response time (typical):** 0.03 ms (Grey to Grey)\*

**Viewing angle:** 178° (H)/178° (V), @ C/R > 10000

**Picture enhancement:** SmartImage game

**Maximum resolution:** HDMI:

3440 x 1440 @ 100 Hz, DP:

3440 x 1440 @ 175 Hz

**Effective viewing area:** 800.1 (H) x 337.1 (V) - at a 1800R curvature\*

**Scanning Frequency:** HDMI: 30k - 160 kHz (H)/48 - 100 Hz (V), DP: 30k - 275 kHz (H)/48 - 175 Hz (V) sRGB

**Delta E:** <2 (sRGB)

**Flicker-free**

**LowBlue Mode**

**Display Screen Coating:** Anti-reflection, 2H

**Low Input Lag**

**EasyRead**

**Adaptive sync**

**HDR:** DisplayHDR True Black 400 certified

**Ambiglow:** 3 sided

**Pixel format:** RGB Q-Stripe\*

**Smart Crosshair**

**Stark ShadowBoost**

**Smart Sniper**

**Shadow Boost**

**MultiView:** PBP/PIP, 2 x devices

**Low blue light:** Low blue light compliance\*

**ClearMR Tier:** 9000

### Connectivity

**Signal Input:** HDMI 2.0 x 2, DisplayPort 1.4 x 1

**Sync Input:** Separate Sync

**Audio (In/Out):** Headphone out

**HDCP:** HDCP 1.4 (HDMI/DisplayPort), HDCP 2.2 (HDMI/DisplayPort)

**USB Hub:** USB 3.2 Gen 1/5 Gbps, USB-B upstream x 1, USB-A downstream x 2 (with 1 for fast charge)

### Convenience

**Plug and Play Compatibility:** DDC/CI, Mac OS, sRGB, Windows 11/10

**User convenience:** Power On/Off, Menu/OK, Input/Up, Game Settings/Down, SmartImage game/Back

**OSD Languages:** Brazil Portuguese, Czech, Dutch, English, Finnish, French, German, Greek, Hungarian, Italian, Japanese, Korean, Polish, Portuguese, Russian, Spanish, Simplified Chinese, Swedish, Turkish, Traditional Chinese, Ukrainian

**Other convenience:** Kensington lock, VESA mount (100 x 100 mm), VESA bracket

**MultiView:** PIP/PBP mode, 2 x devices

**Low blue light:** Low blue light compliance\*

### Stand

**Height adjustment:** 130 mm

**Swivel:** +/- 30 degree

**Tilt:** -5/20 degree

### Power

**Power supply:** Internal, 100–240 VAC, 50–60 Hz

**Off mode:** 0.3 W (typ.)

**On mode:** 98.9 W (typ.)

**Standby mode:** 0.5 W (typ.)

**Power LED indicator:** Operation - White, Standby mode - White (flashing)

### Dimensions

**Packaging in mm (W x H x D):**

900 x 525 x 226 mm

**Product without stand (mm):**

813 x 367 x 164 mm

**Product with stand (max height):**

813 x 555 x 311 mm

### Weight

**Product with packaging (kg):** 10.64 kg

**Product with stand (kg):** 7.72 kg

**Product without stand (kg):** 6.15 kg

### Operating conditions

**Altitude:** Operation: +12,000 ft (3658 m), Non-operation: +40,000 ft (12,192 m)

**Temperature range (operation):** 0°C to 35 °C

**MTBF:** 30,000 hour(s)

**Relative humidity:** 20%-80 %

**Temperature range (storage):** -20°C to 60 °C

### Sustainability

**Environmental and energy:** RoHS

**Specific Substances:** Mercury free, PVC/BFR free housing

**Post-consumer recycled plastics:** 85%\*

**Recyclable packaging material**

### Compliance and standards

**Regulatory Approvals:** CB, CE Mark, ETL,

TUV/ISO9241-307, TUV-BAUART, EAC, EAEU

RoHS, MEPS, PSB, EMF, FCC, ICES-003, CEC, UKCA

### Cabinet

**Colour:** Dark Slate

**Finish:** Texture

### What's in the box?

**Cables:** HDMI cable, DisplayPort cable, USB upstream cable, Power cable, Vesa bracket

**Monitor with stand**

\* For best output performance, please always ensure that your graphic card is capable of achieving the maximum resolution and refresh rate of this Philips display.

\* The max resolution is 8 bits with a 4:4:4 ratio.

\* DCI-P3 Coverage based on CIE1976

\* sRGB Area based on CIE1931

\* Adobe RGB Coverage based on CIE 1976

\* 2020 Advanced Micro Devices, Inc. All rights reserved. AMD, the AMD Arrow logo, AMD FreeSync™ and combinations thereof are trademarks of Advanced Micro Devices, Inc. Other product names used in this publication are for identification purposes only and may be trademarks of their respective companies.

\* NVIDIA® G-SYNC® support interface: DisplayPort

\* Make sure to update NVIDIA® G-SYNC® driver to the latest version, see more information on NVIDIA website: <https://www.nvidia.com/>

\* Make sure that your graphic card supports NVIDIA® G-SYNC®

\* Response time value equal to SmartResponse. The measurement pattern is 1 horizontal line.

\* Active pixels: 3440 (H) x 1440 (V). Number of total pixels: 3456 (H) x 1456 (V); extra 8 pixels on each side, space reserved for pixel orbiting.

\* The ratio of display emission light in the range from 415 - 455 nm to the display emission of 400 - 500 nm shall be less than 50%.

\* 10 bit brightness can only be reached at 144 Hz with WQHD resolution through a DisplayPort connection or at 60 Hz with WQHD resolution via a HDMI connection.

\* This monitor strives for sustainability: the stand's feet are made with 35% recycled plastic and the monitor's chassis is made up of 85% post-consumer recycled plastic.

\* The products and accessories listed on this leaflet may differ by country and region.

\* The monitor may look different from feature images.

