

PHILIPS

Type 2 adapter rings

Accessories for LED
upgrade

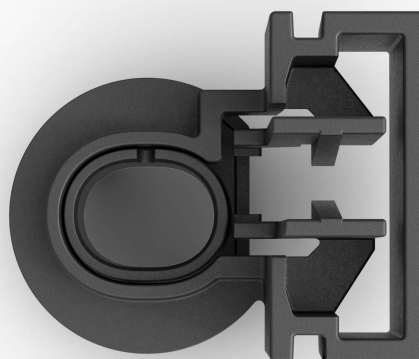
Type 2

For LED-HL [~H1]

Vehicle-model specific

Reliable Philips quality

11401X2



Precise fit and easy installation

Smooth installation of HL [≈H1], H1-LED

To safely install LED headlight bulbs in your vehicle, you may require model-specific adapters. Philips adapter rings ensure that our Philips H1 LED bulbs are firmly fixed in the vehicles that need them.

Model-specific adapter rings

- Find the right adapter ring for your vehicle

Optimal fit

- Easy to install

Reliable Philips quality

- Durable material for long-lasting performance

Highlights

Model-specific adapter rings

Philips HL [≈H1], H1 LED* bulbs are suitable for most vehicle models, but some may require adapter rings to ensure safe installation. To find out if you need additional adapter rings to upgrade your car's headlights to LED, check our Philips compatibility lists**.

Optimal fit

Philips LED adapter rings are easy to install and guarantee a perfect fit and secure attachment of the H1 LED bulbs to the vehicles's headlights,

where required. To find out more about our adapter rings installation, the user manual can be accessed on the Philips support page***.

Reliable Philips quality

Philips LED adapter rings are made from durable materials and can withstand the physical and thermal stresses of automotive use. They've been tested under the toughest conditions so you can enjoy the unique performance of our Philips HL [≈H1], H1 LED* bulbs for years.

Specifications

Marketing specifications

Product highlight: Adapter ring for LED [≈H1]*

Expected benefits: Easy LED bulb installation

Product description

Designation: Adaptor rings Type2 11401 X2

Range: Adapter rings H1 LED

Technology: LED retrofit

Type: Type 2

Compatible with: Philips H1 LED upgrades, check Philips compatibility lists**

Ordering information

Order entry: 11401X2

Ordering code: 2955331

Packaging Data

Packing: Box

EAN1: 8719018029553

EAN3: 8719018029577

Packaging type: X2

Quantity in box: 2

Packed product information

Length: 9.7 cm

Width: 6.3 cm

Height: 9.7 cm

Gross weight: 48 g

Outerpack information

Length: 29.8 cm

Width: 12.8 cm

Height: 10.3 cm

Quantity in outerpack: 12pcs (6 sets)

Packing: Carton

Gross weight per outerpack: 0,29 Kg

