

# PHILIPS

Replacement  
shaving heads

SH50

MultiPrecision Blades

Fits S5000 series rounded shape

Fits S6000 series rounded shape

SH50/50



## Reset your shaver to new

Replace every 24 months for a shaver like new

Within two years, your shaver heads cut 9 million hairs on your face. Replace the shaver heads and get back to 100% performance.

### Easy to use

- Change heads every 24 months for the best performance
- Reset your shaver very simply

### Compatibility

- For shavers series 5000 and 6000 rounded shape

### Performance

- Fast and close shave

### Sustainability

- Recyclable packaging\*

# Highlights

## MultiPrecision blades



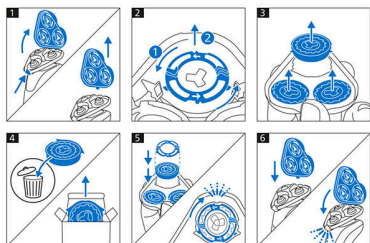
The MultiPrecision blades raise and cut all hairs and remaining stubble – all in a few strokes.

## Compatibility



Check the back of your shaver's handle to confirm replacement head. Need help? Visit [philips.com/accessories](https://philips.com/accessories)

## Simple replacement



1. Open the shaver by pressing the "release" button; 2. Remove the retaining rings by turning them counterclockwise; 3. Take out the old

shaving heads and carefully insert replacements; check that the heads align exactly in the setting; 4. Replace the retaining rings and secure them by turning the lock clockwise; 5. When you close the shaving head properly, you will hear it click into place.

## Reset your shaver to new



Replace the shaver heads every 24 months to ensure best performance or your device.

## Recyclable packaging\*



At Philips we strive for sustainability in all aspects of product development. This packaging comes without plastic parts and is fully recyclable\*.

# Specifications

## Shaving heads

Shaving heads per packaging: 3

Fits product type: Shaver series S5000 rounded shape, Shaver series S6000 rounded shape

