

PHILIPS

Ultrasound



Redefining performance in MSK ultrasound

Philips EPIQ Elite Elevate and Affiniti Elevate

Musculoskeletal (MSK) disorders are the leading contributor to disability worldwide, and are projected to continue to increase, due in part to an aging population.¹ Worldwide obesity has nearly tripled since 1975,² and obesity is linked to a range of MSK conditions.³

Ultrasound is widely available, easy to use, more cost-effective than other imaging methods such as MR and can give a clear picture of soft tissues that do not show up well on X-ray images.⁴

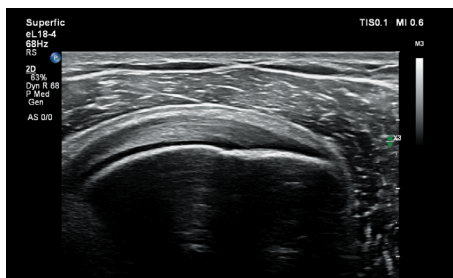


Confident imaging

PureWave crystals have virtually perfect uniformity for greater bandwidth, resulting in excellent detail resolution and improved Doppler sensitivity.

eL18-4 transducer

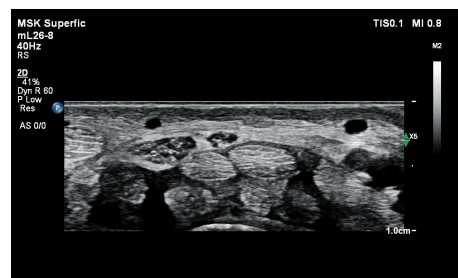
Supports a wide range of MSK anatomies with PureWave crystal transducer technology for outstanding image quality, even in technically difficult patients (TDP).⁵



Shoulder with the eL18-4 transducer

mL26-8 transducer

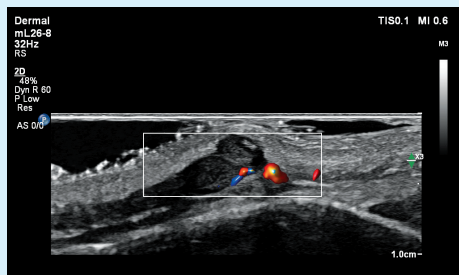
Offers 36% improved spatial resolution and 64% improved penetration* in superficial applications.** Now available on both EPIQ Elite Elevate and Affiniti Elevate.



Wrist with the mL26-8 transducer

Flow Viewer

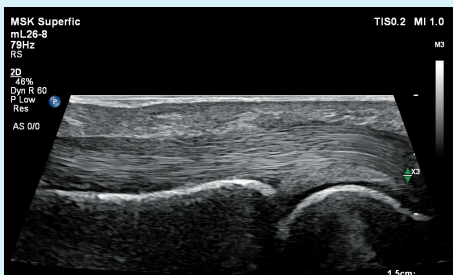
Defines vasculature with a 3D-like appearance using both the velocity and power of the Doppler signal to accurately represent vascular flow topography.



Dermal imaging with the mL26-8 transducer with Flow Viewer

Trapezoid imaging

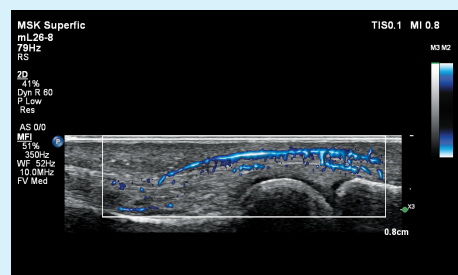
75% larger field of view† than previous generation.** Now available on both EPIQ Elite Elevate and Affiniti Elevate.



Trapezoid image of a finger with the mL26-8 transducer

MicroFlow Imaging (MFI)

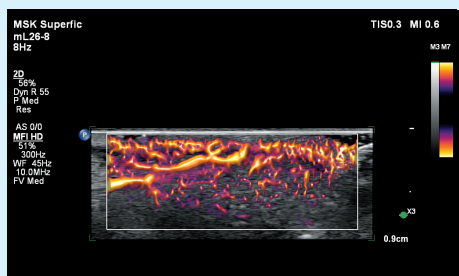
Provides remarkable sensitivity and detail in assessing blood flow.*



Finger with the mL26-8 transducer with MFI

MicroFlow Imaging HD (MFI HD)

Offers 2x the sensitivity and resolution* of MFI in assessing blood flow.**



Panoramic view

Provides the entire landscape in a single view for a global representation of MSK



Needle visualization

Enhances needle visualization for interventional procedures.



Find out more at www.philips.com/GI

*Compared to the predecessor transducer L15-7io.

**Not available on the Affiniti 30 ultrasound system.

†Compared to the predecessor transducer L15-7io for all depths greater than 1.6 cm.

1. World Health Organization Fact Sheet. Musculoskeletal conditions, February 8, 2021.

2. World Health Organization Fact Sheet. Obesity and overweight. June 9, 2021.

3. Anandacoomarasamy A, et al. The impact of obesity on the musculoskeletal system. Int J Obes. 2008;32:211–222. doi.org/10.1038/sj.ijo.0803715.

4. RadiologyInfo.Org: www.radiologyinfo.org/en/info/genus.

5. Chen J, Panda R, Savord B. Realizing dramatic improvements in the efficiency, sensitivity and bandwidth of ultrasound transducers: Philips PureWave crystal technology. Koninklijke Philips N.V. Aug 2006.



2797

© 2024 Koninklijke Philips N.V. All rights are reserved. Philips reserves the right to make changes in specifications and/or to discontinue any product at any time without notice or obligation and will not be liable for any consequences resulting from the use of this publication.



www.philips.com

Printed in the Netherlands.
4522 991 88401 * DEC 2024