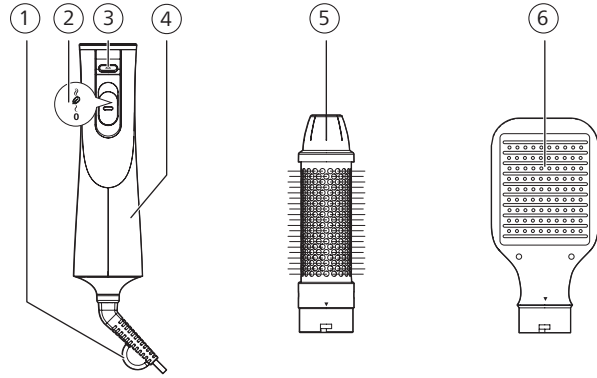




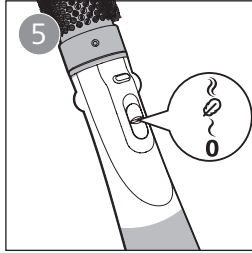
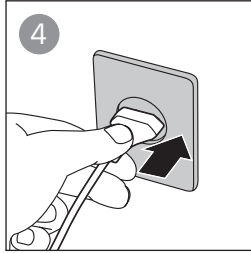
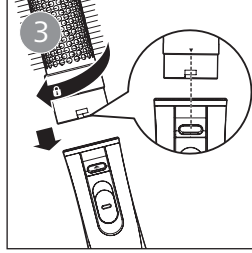
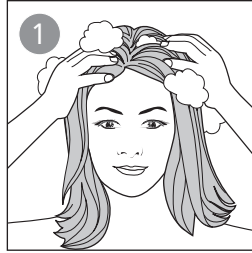
Specifications are subject to change without notice  
© 2024 Koninklijke Philips N.V.  
All rights reserved.

3000.148.5531.1 ( 19/11/2024 )

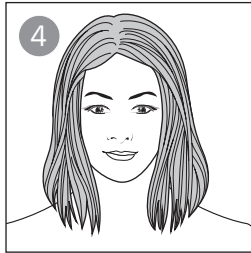
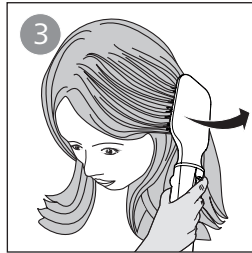
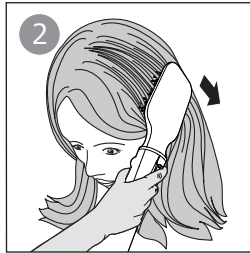
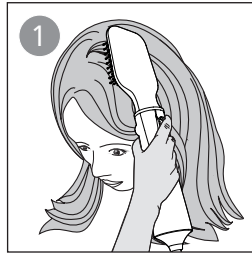
1



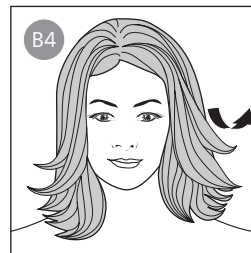
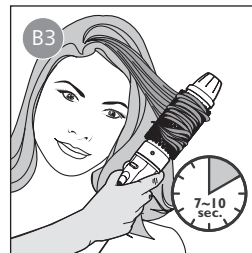
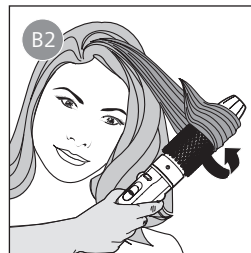
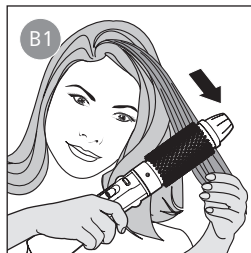
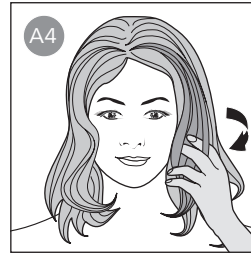
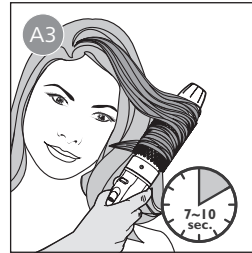
2



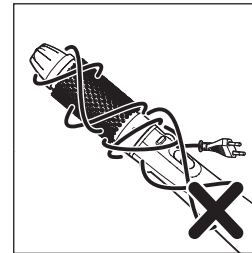
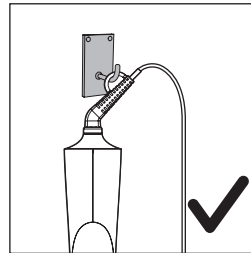
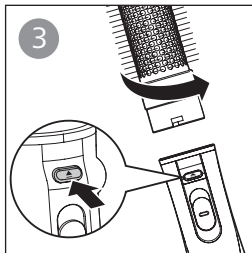
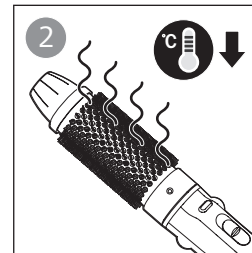
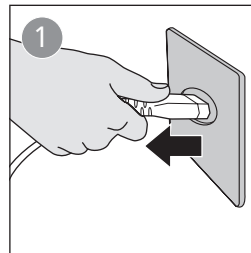
3

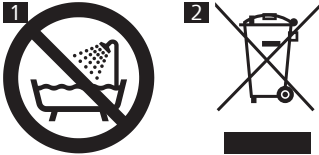


4



5





English

Congratulations on your purchase, and welcome to Philips! To fully benefit from the support that Philips offers, register your product at [www.philips.com/welcome](http://www.philips.com/welcome).

1 Important

Read this user manual carefully before you use the appliance and keep it for future reference.

- This appliance can be used by children aged from 8 years and above and persons with reduced physical, sensory or mental capabilities or lack of experience and knowledge if they have been given supervision or instruction concerning use of the appliance in a safe way and understand the hazards involved. Children shall not play with the appliance. Cleaning and user maintenance shall not be made by children without supervision.
- When the appliance is used in a bathroom, unplug it after use since the proximity of water presents a hazard, even when the appliance is switched off.
- For additional protection, we advise you to install a residual current device (RCD) in the electrical circuit that supplies the bathroom. This RCD must have a rated residual operating current not higher than 30mA. Ask your installer for advice.
- **WARNING:** Do not use this appliance near bathtubs, showers, basins or other vessels containing water. (Fig.1)
- If the supply cord is damaged, you must have the appliance replaced by Philips, a service center authorized by Philips or similarly qualified persons in order to avoid a hazard.
- **WARNING:** Do not use this appliance near water.
- Always unplug the appliance after use.
- Do not pull on the supply cord after using. Always unplug the appliance by holding the plug.
- Before you connect the appliance, ensure that the voltage indicated on the appliance corresponds to the local power voltage.
- Do not use the appliance for any other purpose than described in the user manual.
- Do not use the appliance on artificial hair.
- When the appliance is connected to the power, never leave it unattended.
- Never use any accessories or parts from other manufacturers or that Philips does not specifically recommend. If you use such accessories or parts, your warranty becomes invalid.
- Do not wrap the supply cord around the product or your arm.
- Wait until the appliance has cooled down before you store it.
- Do not operate the appliance with wet hands.
- Always return the device to a service center authorized by Philips for examination or repair. Repair by unqualified people could cause an extremely hazardous situation for the user.
- Do not connect the appliance with a plug adapter. If really necessary, only use a certified plug adapter.
- Never break the appliance to avoid electric shock.
- Do not insert metal object into openings, including ionizer outlet (if present) to avoid electric shock.
- If the appliance overheats, it switches off automatically. Unplug the appliance and let it cool down for a few minutes. Before you switch the appliance on again, check the grilles to make sure they are not blocked by fluff, hair, etc.
- Never block the air grilles.
- Pay full attention when using the appliance since it could be hot. Only hold the handle as other parts may be hot and avoid contact with the skin.
- Never cover the appliance with anything (e.g. a towel or clothing) when it is hot.
- Keep the heating surface clean and free of dust and styling products such as mousse, spray and gel. It's not recommended to use any styling products on hair before or during use of this appliance.
- The heating surface has coating. This coating might slowly wear away over time. However, this does not affect the performance of the appliance.
- If the appliance is used on color-treated hair, the heating surface may be stained.

Electromagnetic fields (EMF)

This Philips appliance complies with all applicable standards and regulations regarding exposure to electromagnetic fields.

Recycling

- This symbol means that electrical products shall not be disposed of with normal household waste (Fig. 2).
- Follow your country's rules for the separate collection of electrical products.

2 Overview

- ① Hanging loop
- ② Airflow switch
- ③ Release button
- ④ Handle
- ⑤ Thermobrush
- ⑥ Paddle brush

3 Style your hair

Note

- Always let the appliance and attachments cool down before you connect or disconnect the attachments.
- Do not use the appliance on completely wet hair. Dry your hair with a towel first. The appliance is most effective on towel-dried hair.

Select a suitable attachment for the hairstyle you want:

Styling result	Attachment
Create natural straight hair	Paddle brush ( ⑥ )
Create inward/Outward flicks	Thermobrush ( ⑤ )

Slide the airflow switch to:

- : Gentle and cool airflow for fixing your hair style
  - : Strong and warm airflow for fast drying and styling
  - : Care temperature setting for gentle drying and styling, preventing your hair from overheating
- If the appliance is powered on, ions are automatically and continuously dispensed to provide additional shine and reducing frizz.

Tip

- After styling, apply hair spray or mousse to fix your hairstyle.

After use:

- 1 Place it on a heat-resistant surface until it cools down.
- 2 Remove hairs and dust from the appliance and attachments.

4 Support

If you need information or support, please visit [www.philips.com/support](http://www.philips.com/support).  
The product is in conformance with the restriction of hazardous substances requirement as per the India E-Waste Rule 2022.



Always there to help you

Visit us at <https://www.philips.co.in/>  
Contact at: 1860 180 1111, 1800 102 2929  
Or [customercare.india@philips.com](mailto:customercare.india@philips.com)

Warranty card



Serial No.:

Dealer's Name: \_\_\_\_\_

Dealer's Stamp: \_\_\_\_\_

Customer's Name and Address: \_\_\_\_\_

Model No. \_\_\_\_\_

Bill No. \_\_\_\_\_ Amount: \_\_\_\_\_

Date of Purchase

Dealer Signature

Warranty and Service

For any information or problem, contact your local Philips dealer or authorized service center. For a list of authorized Philips service centers visit: **[www.philips.com](http://www.philips.com)** or contact our consumer care at 1800 102 2929 (Toll free) or 1860 180 1111 (standard call rates apply)

All consumables and parts susceptible to normal wear and tear are not covered under warranty.

Warranty Card

This apparatus is covered under warranty against any defect due to defective material or workmanship for TWO YEARS from the date of purchase. Should a defect develop during the period of warranty, PHILIPS INDIA LTD. undertakes to repair the apparatus FREE OF CHARGE at any of the Philips authorized Service Centres.

The warranty is not valid in case:

1. Apparatus is not used according to user manual.
2. Defects caused by improper or reckless use.
3. Repairs done by persons other than Philips Authorized service centre.
4. Modifications of any nature made in the apparatus.
5. Tampered serial number.
6. Incomplete warranty card after purchase.
7. Product if used for commercial purpose (i.e. other than domestic use).
8. Usage of parts not recommended by Philips or those made by other manufacturers.

PHILIPS INDIA LIMITED,  
3rd FLOOR, TOWER A, DLF IT PARK, 08 BLOCK AF,  
MAJOR ARTERIAL ROAD, NEW TOWN (RAJARHAT),  
KOLKATA-700156, WEST BENGAL