

PHILIPS



Wet & Dry Electric
Shaver

Shaver 3000 Series

5D Pivot and Flex Heads

PowerCut Blades

Shave wet and dry

Anti-Corrosion Shaving System



S3143/00

Comfortable, clean shave. Even on sensitive skin With SkinProtect Technology

Philips Shaver 3000 Series Wet & Dry Electric Shaver gives you a comfortable, clean shave, even on sensitive skin. 5D Pivot & Flex Heads, 27 self-sharpening PowerCut Blades, and wet and dry use ensure excellent, reliable results every time.

Easy to use

- Suitable for head shaving
- 60 minutes of cordless shaving from a 1 hour charge
- Pop-up trimmer for your moustache and sideburns
- Waterproof for easy cleaning or shower use
- One-touch open for easy cleaning
- Anti-slip grip for a secure shave
- 1 level battery indicator to know when it's time to charge
- Convenient charging

A clean shave

- PowerCut Blades for a consistent, clean shave

Skin Protect technology

- 5D Pivot and Flex Heads stay close to every angle and curve
- Wet and dry shaving at the sink or in the shower

Sustainable

Shaver 3000 Series

Wet & Dry Electric Shaver

S3143/00

Highlights

5D Pivot and Flex Heads



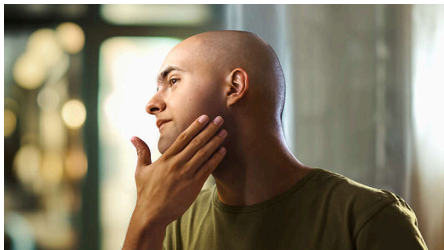
By flexing and pivoting in five directions, the head follows every curve of your face, cutting just above skin level for a clean, comfortable shave even on sensitive skin.

PowerCut Blades



27 self-sharpening blades consistently cut each hair right above skin level for a smooth, even finish every time. Our self-sharpening blades stay like new for 2 years.

Suitable for head shaving



The shaver is designed to be a versatile solution that allows you to confidently shave both your face and head

Wet and dry shaving



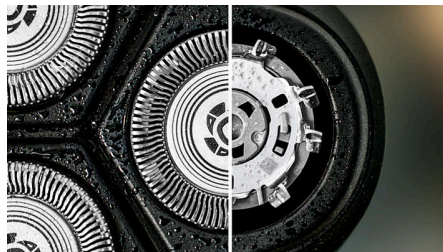
Choose a convenient dry shave, or pair with your favourite foam or gel for a refreshing wet shave, even in the shower.

60 minutes of cordless shaving



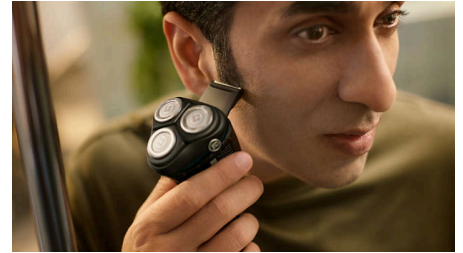
In just an hour, the durable Li-ion battery is fully charged for about 20 shaves. In a hurry? A 5 minute quick charge gives you enough power for one shave.

Anti-Corrosion Shaving System



Our shaver blades are made from surgical-grade hypoallergenic steel to resist corrosion, prevent impurities and protect your skin.

Pop-up trimmer



Refine and define your moustache and sideburns to complete your look with the pop-up trimmer.

One-touch open



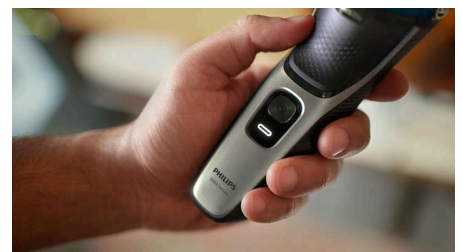
The shaver head flips open at the touch of a button so you can rinse it clean under running water.

Rubber grip



Never lose your grip. The ergonomic handle with rubber stays secure and comfortable, even when wet.

1-level battery indicator



Don't get caught with an empty battery. The battery indicator lets you know if the battery is low, empty or charging.

Shaver 3000 Series

Wet & Dry Electric Shaver

S3143/00

Highlights

USB-A Charging



At Philips, we drive sustainability in all aspects of product creation. Our ambition is to reduce waste and minimise the number of USB adapters we put in the market. Should you need an adapter, a suitable supply unit is available via: www.philips.com/support

Made with care for the planet



The packaging of this shaver is plastic-free and made out of 90% recycle material, while our blade-production facility uses 100% renewable electricity.

Waterproof (IPX7)



Rinse under running water or shave in the shower. The IPX7 waterproof rating means it can be submerged in one metre of water for up to 30 minutes.

Shaver 3000 Series

Wet & Dry Electric Shaver

S3143/00

Specifications

Accessories

Maintenance: Protective cap
Pop-up trimmer included

Power

Charging time: 1 hour full charge
Battery type: Lithium-ion
Run time: 60 min (20 shaves)
Quick charge: Yes, 5 minutes

Design

Handle: Non-slip rubber handle
Colour: Bright Silver

Service

Replacement head: Replace every 2 yrs with SH30
2 year warranty

Shaving Performance

Shaving system: PowerCut blade system, 27 self-sharpening blades, 55.000 cuts/minute
Contour following: 5D Pivot and Flex Heads

Ease of use

Charging: USB-A Charging (5 V_{max} / ≥1 A)
Cleaning: One-touch open, Fully washable
Display: 1-level battery indicator

Wet & Dry: Shave wet or dry

Operation: Cordless use only

Waterproof: Waterproof IPX7, Showerproof

Skin Protect technology

Skin Protection: Anti-Corrosion Shaving System

