

PHILIPS

Wet & Dry Electric
Shaver

Shaver 3000X Series

PowerCut Blades

Shave wet and dry

Anti-Corrosion Shaving System

4D Flex Heads



X3002/00

Comfortable, clean shave

With SkinProtect Technology

The Philips Shaver 3000X Series Wet & Dry Electric Shaver gives you a comfortable, clean shave and good value. 27 self-sharpening PowerCut Blades, wet and dry use, and a pop-up trimmer make the shaver easy to use and always reliable.

Easy to use

- Suitable for head shaving
- Ergonomic grip for comfortable handling
- Waterproof for easy cleaning or shower use
- Pop-up trimmer for your moustache and sideburns
- Battery indicator to know when it's time to charge
- 40 minutes of cordless shaving from a 1 hour charge
- One-touch open for easy cleaning
- Convenient charging

A clean shave

- PowerCut Blades for a consistent, clean shave

Skin Protect technology

- Wet and dry shaving at the sink or in the shower
- 4D Flex Heads follow your face for a comfortable shave

Sustainable

Shaver 3000X Series

Wet & Dry Electric Shaver

X3002/00

Highlights

PowerCut Blades



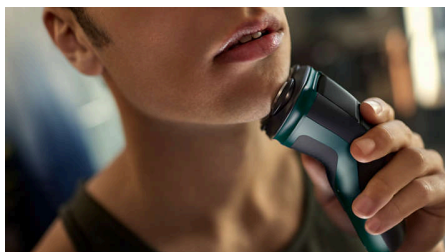
27 self-sharpening blades consistently cut each hair right above skin level for a smooth, even finish every time. Our self-sharpening blades stay like new for 2 years.

Wet and dry shaving



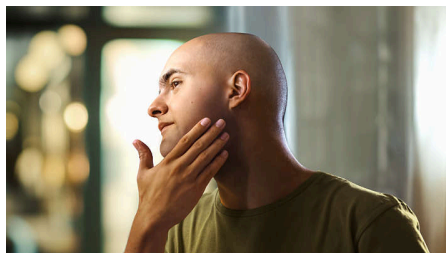
Choose a convenient dry shave, or pair with your favourite foam or gel for a refreshing wet shave, even in the shower.

4D Flex Heads



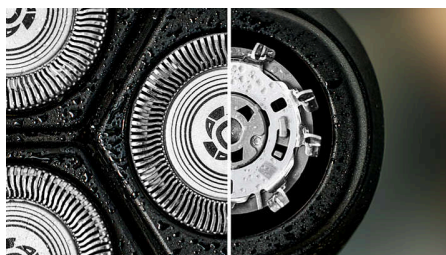
Floating heads flex in four directions to maintain even contact with your skin, protecting it from nicks and cuts.

Suitable for head shaving



The shaver is designed to be a versatile solution that allows you to confidently shave both your face and head

Anti-Corrosion Shaving System



Our shaver blades are made from surgical-grade hypoallergenic steel to resist corrosion, prevent impurities and protect your skin.

Pop-up trimmer



Refine and define your moustache and sideburns to complete your look with the pop-up trimmer.

One-touch open



The shaver head flips open at the touch of a button so you can rinse it clean under running water.

40 minutes of cordless shaving (1h)



In just an hour, the durable NiMH battery is fully charged for about 13 shaves. In a hurry? A 5 minute quick charge gives you enough power for one shave.

Ergonomic grip



Never lose your grip. The ergonomic handle with rubber stays secure and comfortable, even when wet.

Battery indicator



Don't get caught with an empty battery. The battery indicator lets you know if the battery is low, empty or charging.

Shaver 3000X Series

Wet & Dry Electric Shaver

X3002/00

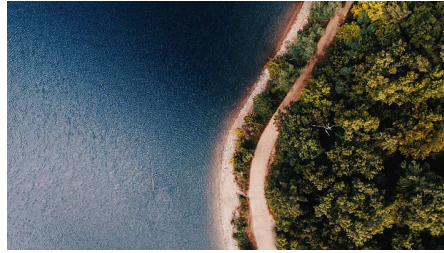
Highlights

USB-A Charging



At Philips, we drive sustainability in all aspects of product creation. Our ambition is to reduce waste and minimise the number of USB adapters we put in the market. Should you need an adapter, a suitable supply unit is available via: www.philips.com/support

Made with care for the planet



The packaging of this shaver is plastic-free and made out of 90% recycle material, while our blade-production facility uses 100% renewable electricity.

Waterproof (IPX7)



Rinse under running water or shave in the shower. The IPX7 waterproof rating means it can be submerged in one metre of water for up to 30 minutes.

Shaver 3000X Series

Wet & Dry Electric Shaver

X3002/00

Specifications

Accessories

Protective cap

Pop-up trimmer included

Power

Charging time: 1 hour full charge

Battery type: NiMH

Run time: 40 minutes

Quick charge: Yes, 5 minutes

Design

Handle: Ergonomic grip & handle

Colour: Dark Forest Green

Service

Replacement head: For best results, replace shaving heads every 24 months. Use SH30 replacement heads, sold separately.

2 year warranty

Shaving Performance

Shaving system: PowerCut blade system, 27 self-sharpening blades, 55.000 cuts/minute

Contour following: 4D Flex Heads

Ease of use

Cleaning: One-touch open, Fully washable

Display: Charging indicator

Wet & Dry: Shave wet or dry

Operation: Cordless use only

Waterproof: Waterproof IPX7*, Showerproof

