

PHILIPS

EVNIA

Full HD gaming
monitor

Curved Fast VA
Gaming monitor

Evnia 5000

27" (68.5 cm)

1920 x 1080 (Full HD)

27M2C5200W



Your gaming experience to the utmost

This Fast VA monitor is made for gamers with a need for speed. Its 280Hz refresh rate and 0.3ms Smart MBR make this monitor the ideal enabler for spotting targets and running through scenarios.

Features designed for gamers needs

- SmartImage game mode optimized for gamers
- Tilt, swivel and height-adjust for an ideal viewing position
- LowBlue mode and Flicker-free easy-on-the eyes viewing
- EasySelect menu toggle key for quick on-screen menu access
- Smart Crosshair: for better aim and more fun

Built for fast action

- 0.3 ms ultra-fast speed for crisp image and smooth gameplay
- Fast VA Panel: For sharp imagery at high frame rates
- Low input lag reduces time delay between devices to monitor
- 280Hz trail-blazing refresh rate for smoothest gameplay

Immersive visuals

- 16:9 Full HD display for crisp detailed images
- High Dynamic Range (HDR) for more lifelike colorful visuals
- SmartContrast for rich black details

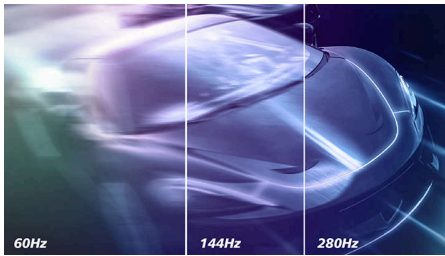
Curved Fast VA Gaming monitor

Full HD gaming monitor

27M2C5200W/00

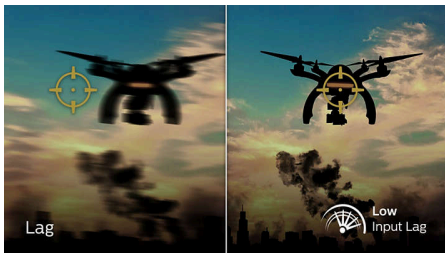
Highlights

Accelerated 280Hz refresh rate



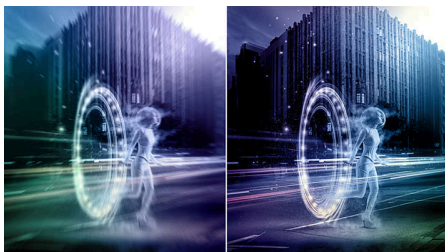
Philips Evnia 280 Hz display takes your gaming experience to new dimensions. The low input lag coupled with variable refresh rate technology gives you an Immersive gaming advantage. Plus, our wide view angle panel with high resolution provides a realistic gaming experience with unsurpassed color accuracy. Focus on what matters as adjustable stand gives the comfort you deserve and flicker-free gives an easy viewing, so you continue gaming without health worries.

Low input lag



Input lag is the amount of time that elapses between performing an action with connected devices and seeing the result on screen. Low input lag reduces the time delay between entering a command from your devices to monitor, greatly improve on playing twitch-sensitive video games, particularly important to whom plays fast-paced, competitive games.

0.3 ms Smart MBR fast response



Philips display with 0.3 ms Smart MBR effectively eliminates smearing and motion blur, delivers shaper and precise visuals to enhance gaming

experience. Fast-moving action and dramatic transitions will be rendered smoothly. Best choice for playing thrilling and twitch-sensitive games.

Fast VA



This feature is made for action-packed gameplay. Not only does it produce virtually blur-free gaming, but it also pairs well with high frame rates for the best and sharpest imagery, guaranteed.

Curved display design



Desktop monitors offer a personal user experience, which suits a curve design very well. The curved screen provides a pleasant yet subtle immersion effect, which focuses on you at the center of your desk.

16:9 Full HD display



Picture quality matters. Regular displays deliver quality, but you expect more. This display features enhanced Full HD 1920 x 1080 resolution. With Full HD for crisp detail paired with high brightness, incredible contrast and realistic colors expect a true to life picture.

High Dynamic Range (HDR)



High Dynamic Range delivers a dramatically different visual experience. With astonishing brightness, incomparable contrast and captivating color, images come to life with much greater brightness while also featuring much deeper, more nuanced darks. It renders a fuller palette of rich new colors never before seen on display, giving you a visual experience that engages your senses and inspires emotions.

SmartContrast



SmartContrast is a Philips technology that analyzes the contents you are displaying, automatically adjusting colors and controlling backlight intensity to dynamically enhance contrast for the best digital images and videos or when playing games where dark hues are displayed. When Economy mode is selected, contrast is adjusted and backlighting fine-tuned for just-right display of everyday office applications and lower power consumption.



Curved Fast VA Gaming monitor

Full HD gaming monitor

27M2C5200W/00

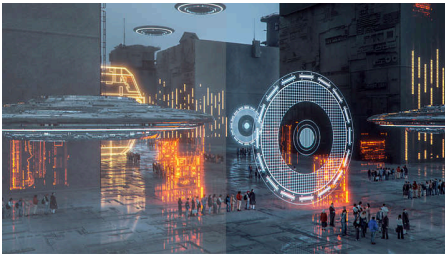
Highlights

LowBlue mode & Flicker-free



Our LowBlue Mode and Flicker-free technology have been developed to reduce eye strain and fatigue often caused by long hours in front of a monitor.

SmartImage Game mode



The new Philips gaming display has quick access OSD fine tuned for gamers, offering you multiple options. "FPS" mode (First person shooting) improves dark themes in games, allowing you to see hidden objects in dark areas. "Racing" mode adapts display with fastest response time, high

color, along with image adjustments. "RTS" mode (Real time strategy) has a special SmartFrame mode which enables highlighting of specific area and allows for size and image adjustments. Gamer 1 and Gamer 2 enable you to save personal customized settings based on different games, ensuring best performance.

Compact Ergo Base



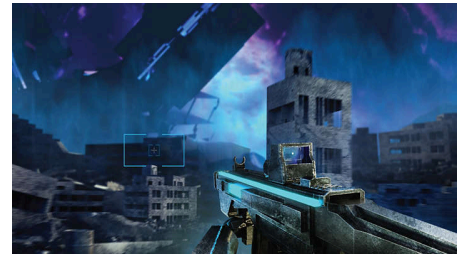
The Compact Ergo Base is a people-friendly Philips monitor base that tilts, swivels and height-adjusts so each user can position the monitor for maximum viewing comfort and efficiency.

EasySelect Menu Toggle Key



The discreetly placed EasySelect Menu Toggle Key allows you to make quick and easy adjustments to monitor settings in the On-Screen Display menu.

Smart Crosshair



Color of Crosshair is set by default. When Smart Crosshair is on, the color will change as complementary color to the background color. Smart Crosshair enhances the accuracy of aiming so you can spot the enemies more easily.



Curved Fast VA Gaming monitor

Full HD gaming monitor

27M2C5200W/00

Specifications

Picture/Display

Panel Size: 27 inch / 68.5 cm

Aspect ratio: 16:9

LCD panel type: VA LCD

Backlight type: W-LED system

Pixel pitch: 0.3114 x 0.3114 mm

Brightness: 300 cd/m²

Display colors: 1.07B (10bits)*

Color gamut (typical): DCI-P3:92%, sRGB: 121%,

NTSC 108%, Adobe RGB 105%*

Contrast ratio (typical): 4000:1

SmartContrast: Mega Infinity DCR

Response time (typical): 1 ms (Gray to Gray)*

Viewing angle: 178° (H) / 178° (V), @ C/R > 10

Picture enhancement: SmartImage game

Maximum resolution: HDMI: 1920 x 1080 @ 180

Hz, DP: 1920 x 1080 @ 280 Hz

Effective viewing area: 597.888 (H) x 336.312 (V)
- at a 1500R curvature*

Scanning Frequency: HDMI: 30 - 200 kHz (H) / 48
- 180 Hz (V), DP: 30 - 320 kHz (H) / 48 - 280 Hz (V)
sRGB

Delta E: < 2 (sRGB)

Flicker-free

Pixel Density: 81.68 PPI

LowBlue Mode

Display Screen Coating: Anti-glare, 25%, 3H

SmartUniformity: 93 ~ 105%

Low Input Lag

EasyRead

Adaptive sync

HDR: HDR 10 supported

Smart Crosshair

Shadow Boost

Smart MBR: 0.3 ms*

Connectivity

Signal Input: HDMI 2.0 x 2, DisplayPort 1.4 x 1

Sync Input: Separate Sync

Audio (In/Out): Headphone out

HDCP: HDCP 1.4 (HDMI / DisplayPort), HDCP 2.2
(HDMI / DisplayPort)

Convenience

Plug & Play Compatibility: DDC/CI, Mac OS X,
sRGB, Windows 11 / 10

User convenience: Power On/Off, Menu/OK,
Input/Up, Game Settings/Down, SmartImage
game/Back

OSD Languages: Brazil Portuguese, Czech, Dutch,
English, Finnish, French, German, Greek,

Hungarian, Italian, Japanese, Korean, Polish,
Portuguese, Russian, Spanish, Simplified Chinese,
Swedish, Turkish, Traditional Chinese, Ukrainian
Other convenience: Kensington lock, VESA
mount (100x100mm), LowBlue Mode

Stand

Height adjustment: 130 mm

Swivel: -/30 degree

Tilt: -5/20 degree

Power

Power supply: Internal, 100-240VAC, 50-60Hz

Off mode: 0.3 W (typ.)

On mode: 22.4 W (typ.)

Standby mode: 0.5 W (typ.)

Power LED indicator: Operation - White, Standby
mode- White (blinking)

Energy Label Class: E

Dimensions

Packaging in mm (WxHxD): 785 x 480 x 188 mm

Product without stand (mm): 611 x 369 x 90 mm

Product with stand(max height): 611 x 528 x
247 mm

Weight

Product with packaging (kg): 9.15 kg

Product with stand (kg): 5.79 kg

Product without stand (kg): 3.97 kg

Operating conditions

Altitude: Operation: +12,000ft (3,658m), Non-
operation: +40,000ft (12,192m)

Temperature range (operation): 0°C to 40 °C

MTBF: 30,000 (Excluded backlight) hour(s)

Relative humidity: 20%-80 %

Temperature range (storage): -20°C to 60 °C

Sustainability

Environmental and energy: RoHS

Recyclable packaging material: 100 %

Post consumer recycled plastics: 85%*

Compliance and standards

Regulatory Approvals: CB, TUV/ISO9241-307,
TUV-BAUART, EAC, EAEU RoHS, CE Mark, UKCA,
EMF, FCC, ICES-003

Cabinet

Color: Dark Slate

Finish: Textured

What's in the box?

Cables: HDMI cable, DisplayPort cable, Power
cable

Monitor with stand

User Documentation



* Radius of the arc of the display curvature in mm
* For best output performance, please always ensure that
your graphic card is capable of achieving the maximum
resolution and refresh rate of this Philips display.
* 10bits only can be reached by DP @ 240Hz.
* Response time value equal to SmartResponse
* Smart MBR is to adjust brightness for blur reduction, so
cannot adjust brightness while Smart MBR is turned on. To
reduce motion blur, LED backlight will strobe
synchronously with screen refresh, which may cause
noticeable brightness change.
* Smart MBR is gaming-optimized mode. Turn on Smart MBR
may cause noticeable screen flickering. It is recommended
to turn off when you are not using the gaming function.
* DCI-P3 Coverage based on CIE1976, sRGB Area based on
CIE1931, NTSC Area and Adobe RGB Area based on
CIE1976.
* This monitor strives for sustainability: the stand's feet and
headphone holder are made with 35% recycled plastic and
monitor's chassis is made up of 85% post-consumer
recycled plastic.
* The products and accessories listed on this leaflet may
differ by country and region.
* The monitor may look different from feature images.