

# PHILIPS

## LCD monitor

### Business Monitor

5000 series

24 (23.8" / 60.47 cm diag.)

1920 x 1080 (Full HD)

24B2G5200



## Incredible efficiency meets ultra power-saving

This monitor is built for energy efficiency. With its LightSensor and PowerSensor, these two features combine to make a power-saving monitor that is a great all-around option for your office.

### Brilliant performance

- 100 Hz Fast Refresh: for ultra-smooth images
- IPS technology for full colours and wide viewing angles

### Designed for the way you work

- Eyesafe-certified blue light protection and colour accuracy

### Eco-friendly materials for sustainability

- 100% recyclable material and FSC-certified packaging
- Built with 85% PCR and 5% ocean-bound plastics

### Energy efficiency - Eco-conscious power savings

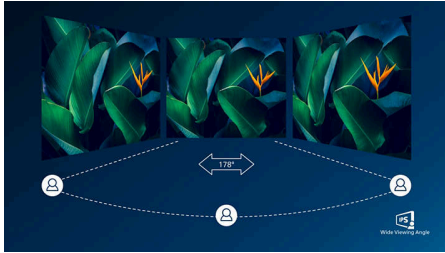
- LightSensor for the perfect brightness with minimal power
- PowerSensor saves up to 80% energy costs

### Designed for comfortable productivity

- SoftBlue Technology: for comfortable viewing
- Less eye fatigue with Flicker-Free technology

# Highlights

## IPS technology



IPS displays use advanced technology that gives you extra-wide viewing angles of 178/178 degrees, making it possible to view the display from almost any angle — even in 90-degree Pivot mode! Unlike standard TN panels, IPS displays gives you remarkably crisp images with vivid colours, making it ideal not only for Photos, films and web browsing, but also for professional applications that demand colour accuracy and consistent brightness at all times.

## 100 Hz fast refresh



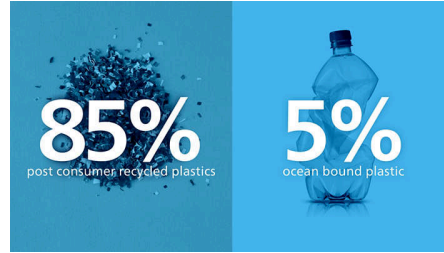
This Philips display redraws the screen image up to 100 times per second, which makes this monitor much faster than a standard display. With a 100 Hz frame rate, gamers are able to find those critical images on the screen that show enemy movement in ultra-smooth motion so that they are easily targetable.

## Eco-Friendly Packaging



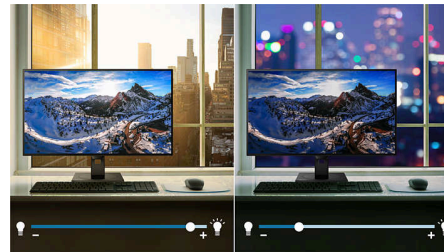
This monitor is packaged in 100% recyclable material and is FSC-certified. This certification guarantees that the packaging is designed with a focus on environmental sustainability.

## EcoSmart materials



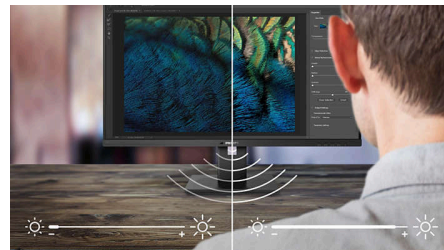
Being eco-friendly means repurposing old materials. That's why this Philips monitor is made with 85% post-consumer recycled plastics and 5% ocean-bound plastic, therefore making a concerted effort to reduce waste.

## LightSensor



LightSensor uses a smart sensor to adjust the picture brightness depending on the light conditions in the room for the perfect picture with minimal power usage.

## PowerSensor



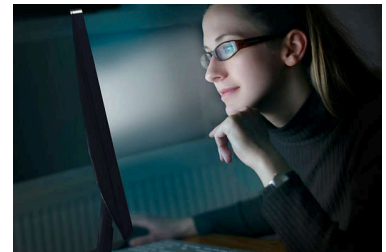
PowerSensor is a built-in 'people sensor' that transmits and receives harmless infrared signals to determine if the user is present and then automatically reduces monitor brightness when then user steps away from the desk, cutting energy costs by up to 80 percent and prolonging monitor life

## TUV Rheinland Eyesafe - RPF 40



Philips display meets the TUV Rheinland Eyesafe® standard to truly protect you from long exposure to blue light. The always-on blue light filter not only helps reduce digital eye strain, but also guarantees colour integrity.

## SoftBlue Technology



SoftBlue LED technology, combined with the monitor's low blue light panel, is an effective solution to reducing the adverse health effects caused by high exposure to blue light. In this monitor's panel, the ratio of light is reduced by nearly 50 percent while the SoftBlue LED technology works simultaneously by reducing harmful blue light rays emitted from the screen. Additionally, the SoftBlue LED technology is tested and certified by TUV Rheinland Eyesafe for its effectiveness in reducing blue light emissions.

## Flicker-Free technology



Due to the way brightness is controlled on LED-backlit screens, some users experience flicker on their screen which causes eye fatigue. Philips Flicker-Free technology applies a new solution to regulate brightness and reduce flicker for more comfortable viewing.

# Specifications

## Picture/Display

**Panel Size:** 23.8 inch/60.47 cm  
**Aspect ratio:** 16:9  
**LCD panel type:** IPS technology  
**Backlight type:** W-LED system  
**Pixel pitch:** 0.2745 (H) mm x 0.2745 (V) mm  
**Brightness:** 300 cd/m<sup>2</sup>  
**Display colours:** 16.7 M (8 bit)  
**Colour gamut (typical):** sRGB 110%, NTSC 96%\*  
**Contrast ratio (typical):** 1500:1  
**SmartContrast:** 50,000,000:1  
**Response time (typical):** 4 ms (Grey to Grey)\*  
**Viewing angle:** 178° (H)/178° (V), @ C/R > 10  
**Picture enhancement:** SmartImage  
**Maximum resolution:** VGA:  
 1920 x 1080 @ 75 Hz; HDMI/DP:  
 1920 x 1080 @ 100 Hz  
**Effective viewing area:** 527.04 (H) x 296.46 (V) mm  
**Scanning Frequency:** VGA: 30 k - 85 kHz (H)/48 - 75 Hz (V); HDMI/DP: 30 k - 115 kHz (H)/48 - 100 Hz (V)  
**sRGB**  
**SoftBlue**  
**Flicker-free**  
**Pixel Density:** 93 PPI  
**Display Screen Coating:** Anti-Glare, 3H, Haze 25%  
**EasyRead**  
**Adaptive sync**  
**EyeSafe**

## Connectivity

**Signal Input:** VGA x 1, HDMI 1.4 x 1, DisplayPort 1.2 x 1  
**Sync Input:** Separate Sync, Sync on Green  
**Audio (In/Out):** Audio In x 1, Audio Out x 1  
**HDCP:** HDCP 1.4 (HDMI/DisplayPort)  
**USB Hub:** USB 3.2, Gen 1/5 Gbps, USB-B upstream x 1 (Data), USB 3.2 downstream x 4 (with 1 for fast charge B.C 1.2)

## Convenience

**Built-in Speakers:** 3 W x 2  
**Plug and Play Compatibility:** DDC/CI, Mac OS, sRGB, Windows 11/10  
**User convenience:** SmartImage, Input, Brightness, Menu, Power On/Off  
**OSD Languages:** Brazil Portuguese, Czech, Dutch, English, French, Finnish, German, Greek, Hungarian, Italian, Japanese, Korean, Portuguese, Polish, Russian, Simplified Chinese,

Spanish, Swedish, Traditional Chinese, Turkish, Ukrainian  
**Other convenience:** Kensington lock, VESA mount (100 x 100 mm), Earphone hook  
**Control software:** SmartControl

## Stand

**Height adjustment:** 150 mm  
**Pivot:** -/+90 degree  
**Swivel:** -/+ 180 degree  
**Tilt:** -5/30 degrees degree

## Power

**ECO mode:** 6.0 W (typ.)  
**Power supply:** Built-in, 100–240 VAC, 50–60 Hz  
**Off mode:** 0.3 W (typ.)  
**On mode:** 8.74 W (typ.) (Energy Star test method)  
**Standby mode:** 0.3 W (typ.)  
**Power LED indicator:** Operation - White, Standby mode - White (flashing)  
**Energy Label Class:** B

## Dimensions

**Packaging in mm (W x H x D):**  
 615 x 385 x 139 mm  
**Product without stand (mm):** 540 x 324 x 56 mm  
**Product with stand (max height):**  
 540 x 501 x 232 mm

## Weight

**Product with packaging (kg):** 7.42 kg  
**Product with stand (kg):** 5.28 kg  
**Product without stand (kg):** 3.56 kg

## Operating conditions

**Altitude:** Operation: +12,000 ft (3658 m), Non-operation: +40,000 ft (12,192 m)  
**Temperature range (operation):** 0°C to 40 °C  
**Relative humidity:** 20%-80 %  
**Temperature range (storage):** -20°C to 60 °C  
**MTBF (demonstrated):** 70,000 hrs (excluded backlight)

## Sustainability

**Environmental and energy:** PowerSensor, LightSensor, Energy Star, EPEAT Gold, RoHS  
**Post-consumer recycled plastic:** 85%+OBP 5%  
**Recyclable packaging material:** 100 %  
**Specific Substances:** PVC/BFR free housing, Mercury free

## Compliance and standards

**Regulatory Approvals:** CB, CE Mark, TUV/GS, TUV Ergo, TCO Certified, EAC, EAEU RoHS, UKCA, EMF, FCC, ICES-003, eyesafe<sup>®</sup> CERTIFIED 2.0, TÜV Rheinland Low Blue Light (Hardware Solution)

## Cabinet

**Finish:** Texture  
**Foot:** Charcoal  
**Front bezel:** Charcoal  
**Rear cover:** Charcoal

## What's in the box?

**Cables:** HDMI cable, DisplayPort cable, Power cable  
**Monitor with stand**  
**User Documentation**

