

PHILIPS

LCD monitor

Business Monitor

5000 series

27" (68.5 cm)

2560 x 1440 (Quad HD)

27B2G5500



Incredible efficiency meets ultra power-saving

This monitor is built for energy efficiency. With its LightSensor and PowerSensor, these two features combine to make a power-saving monitor that is a great all-around option for your office.

Brilliant performance

- 100 Hz Fast Refresh: for ultra-smooth images
- IPS technology for full colours and wide viewing angles

Eco-friendly materials for sustainability

- 100% recyclable material and FSC-certified packaging
- Built with 85% PCR and 5% ocean-bound plastics

Energy efficiency - Eco-conscious power savings

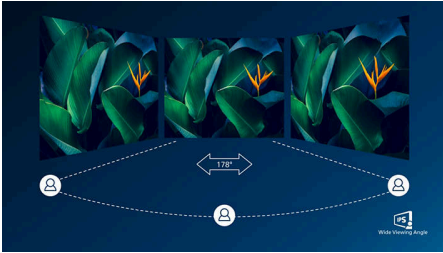
- LightSensor for the perfect brightness with minimal power
- PowerSensor saves up to 70% energy costs

Designed for comfortable productivity

- Eyesafe-certified blue light protection and colour accuracy
- SoftBlue Technology: for comfortable viewing
- LowBlue mode and Flicker-free easy-on-the eyes viewing

Highlights

IPS technology



IPS displays use advanced technology that gives you extra-wide viewing angles of 178/178 degrees, making it possible to view the display from almost any angle — even in 90-degree Pivot mode! Unlike standard TN panels, IPS displays gives you remarkably crisp images with vivid colours, making it ideal not only for Photos, films and web browsing, but also for professional applications that demand colour accuracy and consistent brightness at all times.

100 Hz fast refresh



This Philips display redraws the screen image up to 100 times per second, which makes this monitor much faster than a standard display. With a 100 Hz frame rate, gamers are able to find those critical images on the screen that show enemy movement in ultra-smooth motion so that they are easily targetable.

Eco-Friendly Packaging



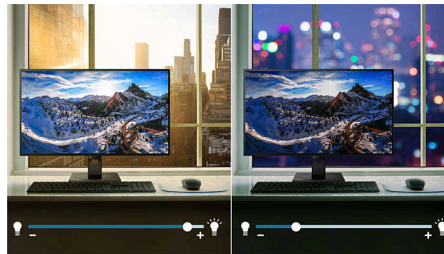
This monitor is packaged in 100% recyclable material and is FSC-certified. This certification guarantees that the packaging is designed with a focus on environmental sustainability.

EcoSmart materials



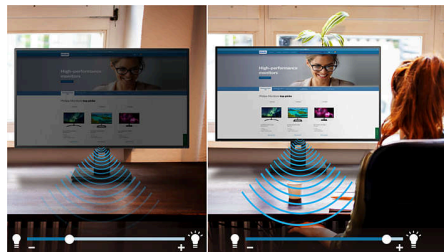
Being eco-friendly means repurposing old materials. That's why this Philips monitor is made with 85% post-consumer recycled plastics and 5% ocean-bound plastic, therefore making a concerted effort to reduce waste.

LightSensor



LightSensor uses a smart sensor to adjust the picture brightness depending on the light conditions in the room for the perfect picture with minimal power usage.

PowerSensor



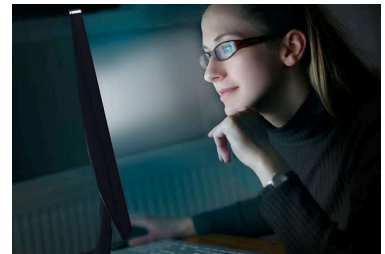
PowerSensor is a built-in 'people sensor' that transmits and receives harmless infrared signals to determine if the user is present and automatically reduces monitor brightness when the user steps away from the desk, cutting energy costs by up to 70 percent and prolonging monitor life.

TUV Rheinland Eyesafe - RPF 40



Philips display meets the TUV Rheinland Eyesafe® standard to truly protect you from long exposure to blue light. The always-on blue light filter not only helps reduce digital eye strain, but also guarantees colour integrity.

SoftBlue Technology



SoftBlue LED technology, combined with the monitor's low blue light panel, is an effective solution to reducing the adverse health effects caused by high exposure to blue light. In this monitor's panel, the ratio of light is reduced by nearly 50 percent while the SoftBlue LED technology works simultaneously by reducing harmful blue light rays emitted from the screen. Additionally, the SoftBlue LED technology is tested and certified by TUV Rheinland Eyesafe for its effectiveness in reducing blue light emissions.

LowBlue Mode and Flicker-free



Our LowBlue Mode and Flicker-free technology have been developed to reduce eye strain and fatigue often caused by long hours in front of a monitor.



Specifications

Picture/Display

Panel Size: 27 inch/68.5 cm
Aspect ratio: 16:9
LCD panel type: IPS LCD
Backlight type: W-LED system
Pixel pitch: 0.2331 x 0.2331 mm
Optimum resolution: 2560 x 1440 @ 60 Hz
Brightness: 300 cd/m²
Display colours: 16.7 M (true 8 bits)
Colour gamut (typical): sRGB: 108%, NTSC: 94% *
Contrast ratio (typical): 1500:1
SmartContrast: 50,000,000:1
Response time (typical): 4 ms (Grey to Grey)*
Viewing angle: 178° (H)/178° (V), @ C/R > 10
Picture enhancement: SmartImage
Maximum resolution: 2560 x 1440 @ 100 Hz
Effective viewing area: 596.74 (H) x 335.66 (V) mm
Scanning Frequency: 30k - 150 kHz (H)/48 - 100 Hz (V)
sRGB
SoftBlue
Flicker-free
Pixel Density: 109 PPI
LowBlue Mode
Display Screen Coating: Anti-Glare, 3H, Haze 25%
EasyRead
Adaptive sync

Connectivity

Signal Input: HDMI 2.0 x 2, DisplayPort 1.4 x 1
Sync Input: Separate Sync, Sync on Green
Audio (In/Out): Audio out
HDCP: HDCP 1.4 (HDMI/DisplayPort); HDCP 2.2 (HDMI/DisplayPort)
USB Hub: USB3.2, Gen1, 5G; Upstream: USB-B x 1; Downstream: USB 3.2 x 4, (with 1 for fast charge B.C 1.2)

Convenience

Built-in Speakers: 3 W x 2
Plug and Play Compatibility: DDC/CI, Mac OS, sRGB, Windows 11/10
User convenience: SmartImage, Input, Brightness, Menu, Power On/Off
OSD Languages: Brazil Portuguese, Czech, Dutch, English, French, Finnish, German, Greek, Hungarian, Italian, Japanese, Korean, Portuguese, Polish, Russian, Simplified Chinese, Spanish, Swedish, Traditional Chinese, Turkish, Ukrainian

Other convenience: Kensington lock, VESA mount (100 x 100 mm), Earphone hook
Control software: SmartControl

Stand

Height adjustment: 150 mm
Pivot: -/+90 degree
Swivel: -/+ 180 degree
Tilt: -5/30 degree

Power

ECO mode: 8.3 W (typ.)
Power supply: Built-in, 100–240 VAC, 50–60 Hz
Off mode: 0.3 W (typ.)
On mode: 11.11 W (typ.) (Energy Star test method)
Standby mode: 0.3 W (typ.)
Power LED indicator: Operation - White, Standby mode - White (flashing)
Energy Label Class: B

Dimensions

Packaging in mm (W x H x D):
730 x 445 x 159 mm
Product without stand (mm): 614 x 368 x 58 mm
Product with stand (max height):
614 x 543 x 235 mm

Weight

Product with packaging (kg): 9.77 kg
Product with stand (kg): 6.77 kg
Product without stand (kg): 5.01 kg

Operating conditions

Altitude: Operation: +12,000 ft (3658 m), Non-operation: +40,000 ft (12,192 m)
Temperature range (operation): 0°C to 40 °C
Relative humidity: 20%-80 %
Temperature range (storage): -20°C to 60 °C
MTBF (demonstrated): 70,000 hrs (excluded backlight)

Sustainability

Environmental and energy: Energy Star 8.0, EPEAT*, RoHS, PowerSensor, LightSensor
Post-consumer recycled plastic: 85%+OBP 5%
Recyclable packaging material: 100 %
Specific Substances: Mercury free, PVC/BFR free housing

Compliance and standards

Regulatory Approvals: CB, CE Mark, EPA, EnergyStar, TUV/GS, TUV Ergo, TCO Certified, EAC, EAEU RoHS, UKCA, EMF, FCC, ICES-003, eyesafe® CERTIFIED 2.0, TÜV Rheinland Low Blue Light (Hardware Solution)

Cabinet

Finish: Texture
Foot: Silver
Front bezel: Charcoal
Rear cover: Charcoal

What's in the box?

Cables: HDMI cable, DisplayPort cable, Power cable
Monitor with stand
User Documentation

