

PHILIPS



IPL Hair removal
device

Lumea IPL 7000
Series

5 manual intensity settings

1 attachment: body

Lumea IPL App

Corded use



SC1994/00

Enjoy 12 months of hair -free smooth skin*

Up to 92% hair reduction in just 3 fortnightly treatments

Get hair-free smooth skin with our Lumea IPL 7000 Series. Treatments are gentle and effective with attachments for each body area.

Gentle and effective for long-lasting smooth skin

- Fast results with treatments only every 2 weeks
- Developed with dermatologists to be easy and effective
- Extra-long cable for added flexibility while treating

Full solution for face and body

- 1 attachment for body
- Suitable for a wide range of skin tones and hair colors

Personalized IPL hair removal treatment

- Skin Tone Sensor and 5 intensity settings
- Optimize your routine with the Philips Lumea IPL app

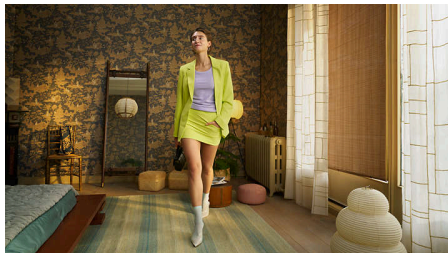
Lumea IPL 7000 Series

IPL Hair removal device

SC1994/00

Highlights

2x a month for fast results



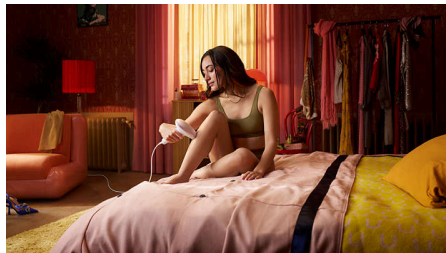
Get started with the initial phase of 4 treatments only every 2 weeks — that's half as many treatments as other brands. Then touch up monthly to maintain the results.

Skin Tone Sensor



Choose from 5 intensity settings for a comfortable experience. The Skin Tone Sensor prevents you from treating areas of your skin that are too dark for IPL treatment.

Extra-long cable



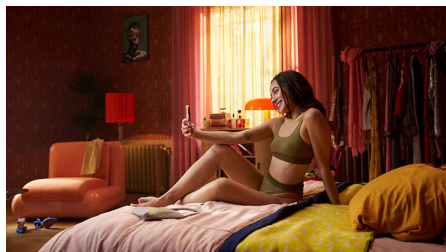
Convenient to use thanks to an extra long cable for easy access and enhanced maneuverability.

1 attachment for body



The body attachment can be used for gentle and effective treatment. The wide treatment window is perfect for quickly treating larger body areas like legs, arms and stomach.

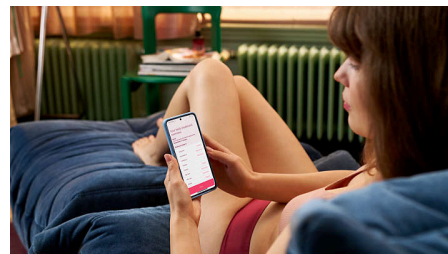
Developed with dermatologists



As a leader in health technology, Philips developed Lumea IPL in consultation with dermatologists, for easy and effective use in the

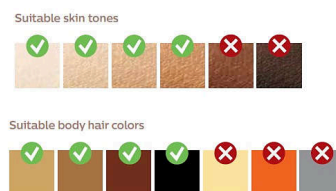
safety of your home. Derived from technology used in professional salons, Lumea IPL offers gentle treatment, even on sensitive areas.

Philips Lumea IPL app



Our free coaching app helps you plan and stick to your treatment schedule, then takes you through each session step by step. Downloaded by more than 2.1 million users.

For many skin and hair types



IPL needs contrast between the pigment in the hair color and the pigment in the skin tone, therefore works on naturally dark blonde, brown and black hair and on skin tones from fair to medium brown (I-IV).

Lumea IPL 7000 Series

IPL Hair removal device

SC1994/00

Specifications

Safety and adjustable settings

Integrated UV filter: Protects skin from UV light
5 light energy settings: Adjustable to your skin type

Integrated safety system: Prevents unintentional flashing

Application mode

Slide and Flash: For easy motion application
Stamp and Flash: For treatment on small areas
Corded / cordless use: Corded

Technical specifications

High performance lamp: Built to last, 250,000 flashes, equivalent to 20 years of lamp lifetime**
Voltage: 100-240 V

Consumer Trade Item

Height: 22.8 cm
Width: 24.7 cm
Length: 12.3 cm
Net weight: 0.667 kg
Gross weight: 1.126 kg

GTIN: 8720689016933
Country of origin: HU
Harmonized system code: 85437090

Outer Carton

Height: 25.8 cm
Width: 23.8 cm
Length: 25.7 cm
Net weight: 1.334 kg
Gross weight: 2.524 kg
GTIN: 18720689016930

Pallet

Height: 118.2 cm
Width: 80 cm
Length: 120 cm
Net weight: 80.04 kg
Gross weight: 168.004 kg
GTIN: 68720689016935

Service

Warranty: 2 years global warranty + 1 extra year of warranty upon product registration within 90 days

Pallet Layer

Height: 25.8 cm
Width: 80 cm
Length: 120 cm

Items included

Instructions for use: User manual
Storage: Pouch
Adapter: 24V / 1500mA

Application time

Lower leg: 15 min
Underarms: 2,5 min
Bikini line: 4 min
Face areas: 2 min

Technical specs. attachments

Body attachment: Window size: 4.0 cm², Treatment for body: legs, arms, stomach and underarms

